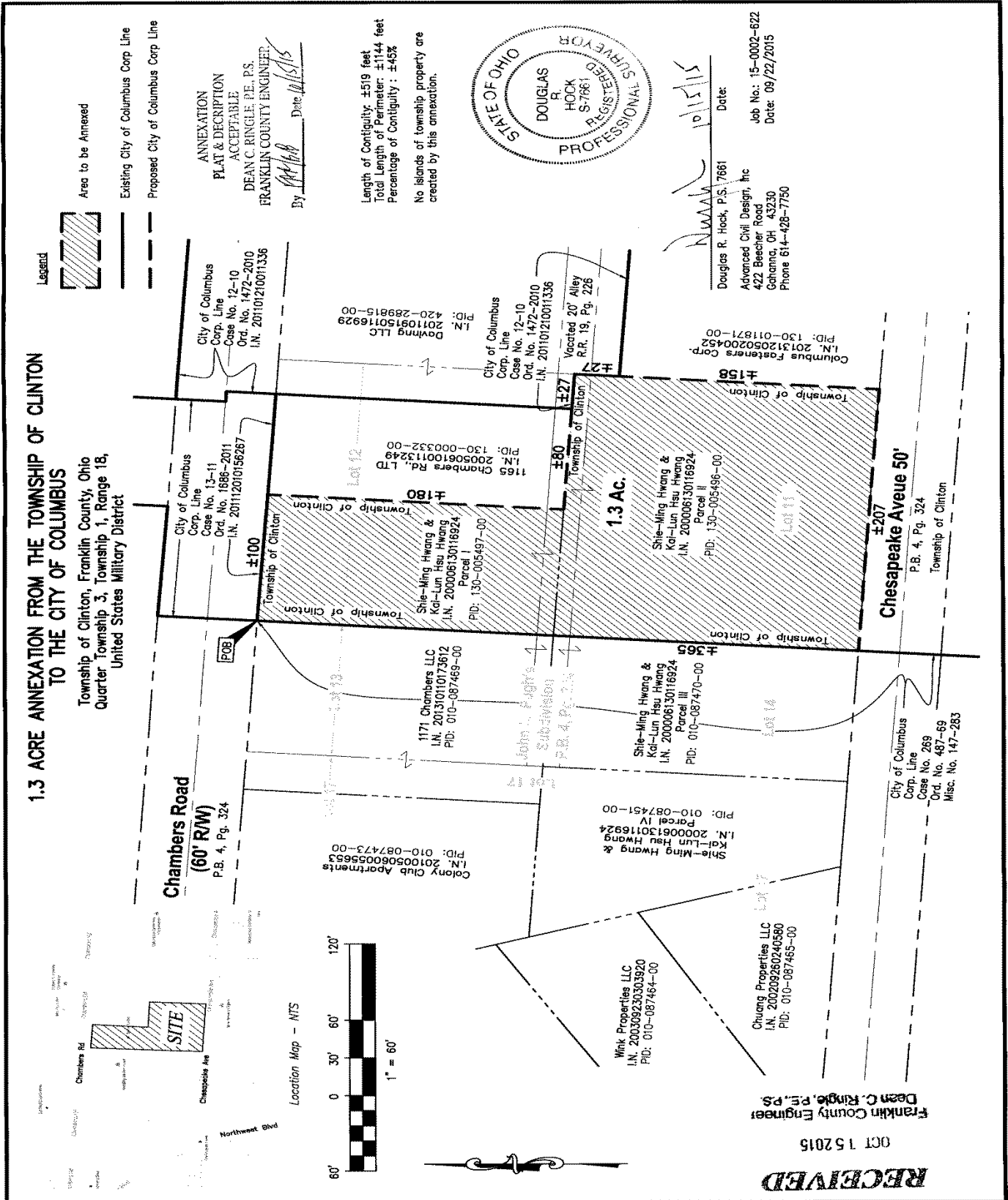


# ANNEXATION AN15-016

## + 1.30 Acres / Clinton Township

### Shie-Ming Hwang and Kai-Lun Hsu Hwang

#### (1200 Chesapeake Ave)



**Legend**



Area to be Annexed

Existing City of Columbus Corp. Line

Proposed City of Columbus Corp. Line

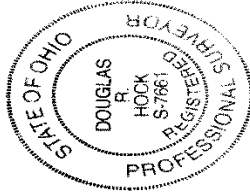
ANNEXATION  
PLAT & DESCRIPTION  
ACCEPTABLE.

DEAN C. RINGLE, P.E., P.S.  
FRANKLIN COUNTY ENGINEER.

By: *[Signature]* Date: *10/15/15*

Length of Contiguity: ±519 feet  
Total Length of Perimeter: ±1144 feet  
Percentage of Contiguity: ±45%

No Islands of township property are created by this annexation.



Douglas R. Hock, P.S., 7661  
Advanced Civil Design, Inc  
422 Beecher Road  
Gahanna, OH 43230  
Phone 614-428-7750

Date: 09/22/2015  
Job No.: 15-0002-622

### 1.3 ACRE ANNEXATION FROM THE TOWNSHIP OF CLINTON TO THE CITY OF COLUMBUS

Township of Clinton, Franklin County, Ohio  
Quarter Township 3, Township 1, Range 18,  
United States Military District

**Chambers Road**  
**(60' R/W)**  
P.B. 4, Pg. 324

City of Columbus  
Corp. Line  
Case No. 13-11  
Ord. No. 1886-2011  
I.N. 20112010158267

City of Columbus  
Corp. Line  
Case No. 12-10  
Ord. No. 1472-2010  
I.N. 201101210011336

Colony Club Apartments  
I.N. 201005060055653  
PID: 010-087473-00

1171 Chambers LLC  
I.N. 20131010173612  
PID: 010-087469-00

Shie-Ming Hwang &  
Kai-Lun Hsu Hwang  
I.N. 200006130116924  
Parcel I  
PID: 130-005497-00

Douglas LLC  
I.N. 201109150116929  
PID: 420-1289815-00

City of Columbus  
Corp. Line  
Case No. 12-10  
Ord. No. 1472-2010  
I.N. 201101210011336

Shie-Ming Hwang &  
Kai-Lun Hsu Hwang  
I.N. 200006130116924  
Parcel IV  
PID: 010-087451-00

Shie-Ming Hwang &  
Kai-Lun Hsu Hwang  
I.N. 200006130116924  
Parcel III  
PID: 010-087470-00

Shie-Ming Hwang &  
Kai-Lun Hsu Hwang  
I.N. 200006130116924  
Parcel II  
PID: 130-005496-00

Vacated 20' Alley  
R.R. 19, Pg. 226  
I.N. 201101210011336

Columbus Fasteners Corp.  
I.N. 201312050200452  
PID: 130-011871-00

Franklin County Engineer  
Dean C. Ringle, P.E., P.S.

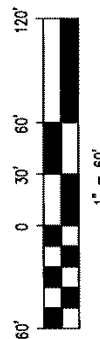
OCT 15 2015

**RECEIVED**

**Chesapeake Avenue 50'**  
±207

P.B. 4, Pg. 324  
Township of Clinton

City of Columbus  
Corp. Line  
Case No. 269  
Ord. No. 487-69  
Misc. No. 147-283



Location Map - NTS

