





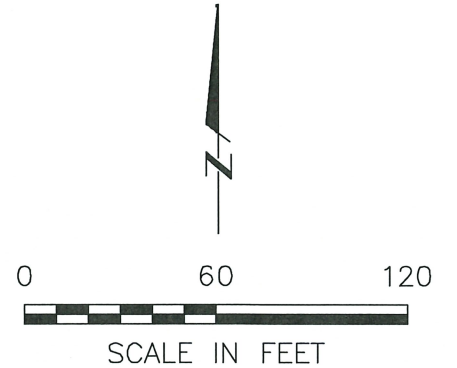
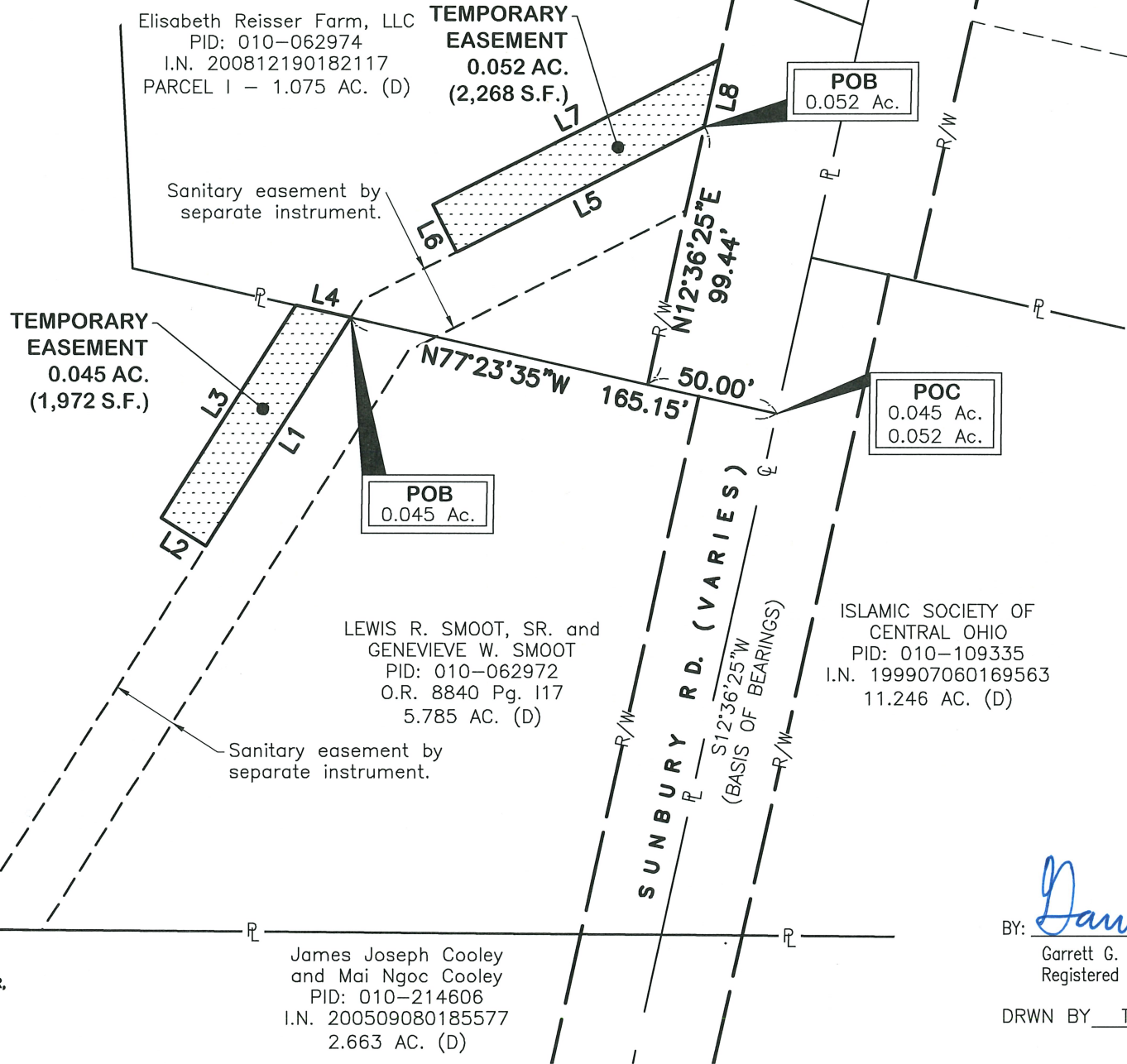


LEGEND

-  Property Line
-  Right-of-Way
-  Centerline of Right-of-Way
-  Point of Commencement
-  Point of Beginning
-  Proposed Temporary Easement

LINE TABLE		
LINE #	LENGTH	DIRECTION
L1	102.25'	S32° 31' 43"W
L2	20.00'	N57° 28' 17"W
L3	95.00'	N32° 31' 43"E
L4	21.27'	S77° 23' 35"E
L5	105.24'	S63° 19' 58"W
L6	20.00'	N26° 40' 02"W
L7	121.59'	N63° 19' 58"E
L8	25.84'	S12° 36' 25"W

0.045 ACRE TEMPORARY EASEMENT
0.052 ACRE TEMPORARY EASEMENT
 STATE OF OHIO, COUNTY OF FRANKLIN,
 CITY OF COLUMBUS
 QUARTER TOWNSHIP 2, TOWNSHIP 1, RANGE 17
 UNITED STATES MILITARY LANDS



BY: *Garrett Brown* 8/23/23
 Garrett G. Brown, P.S., E.I.
 Registered Surveyor No. 8797

DRWN BY TKC CHK BY GGB DATE 8/23/2023
 571.054

BASIS OF BEARINGS
 Ohio State Plane Coordinate System, Ohio South Zone, NAD83 (2011) as determined by ODOT RTN observations, with the centerline of Sunbury Road bearing South 12°36'25" West.

E. P. FERRIS AND ASSOCIATES INC.
 Consulting Civil Engineers and Surveyors

2130 QUARRY TRAILS DR,
 2ND FLOOR
 COLUMBUS, OHIO 43228
 (614) 299-2999
 (614) 299-2992 (Fax)
 www.EPFERRIS.com

James Joseph Cooley
 and Mai Ngoc Cooley
 PID: 010-214606
 I.N. 200509080185577
 2.663 AC. (D)

LEWIS R. SMOOT, SR. and
 GENEVIEVE W. SMOOT
 PID: 010-062972
 O.R. 8840 Pg. 117
 5.785 AC. (D)

Elisabeth Reisser Farm, LLC
 PID: 010-062978
 I.N. 200812190182117
 PARCEL II - 0.425 AC. (D)

Elisabeth Reisser Farm, LLC
 PID: 010-062974
 I.N. 200812190182117
 PARCEL I - 1.075 AC. (D)

ISLAMIC SOCIETY OF
 CENTRAL OHIO
 PID: 010-109335
 I.N. 199907060169563
 11.246 AC. (D)

M:\23\SunburyRoad\Drawings\Information\Drawings\Text\123625\123625.dwg