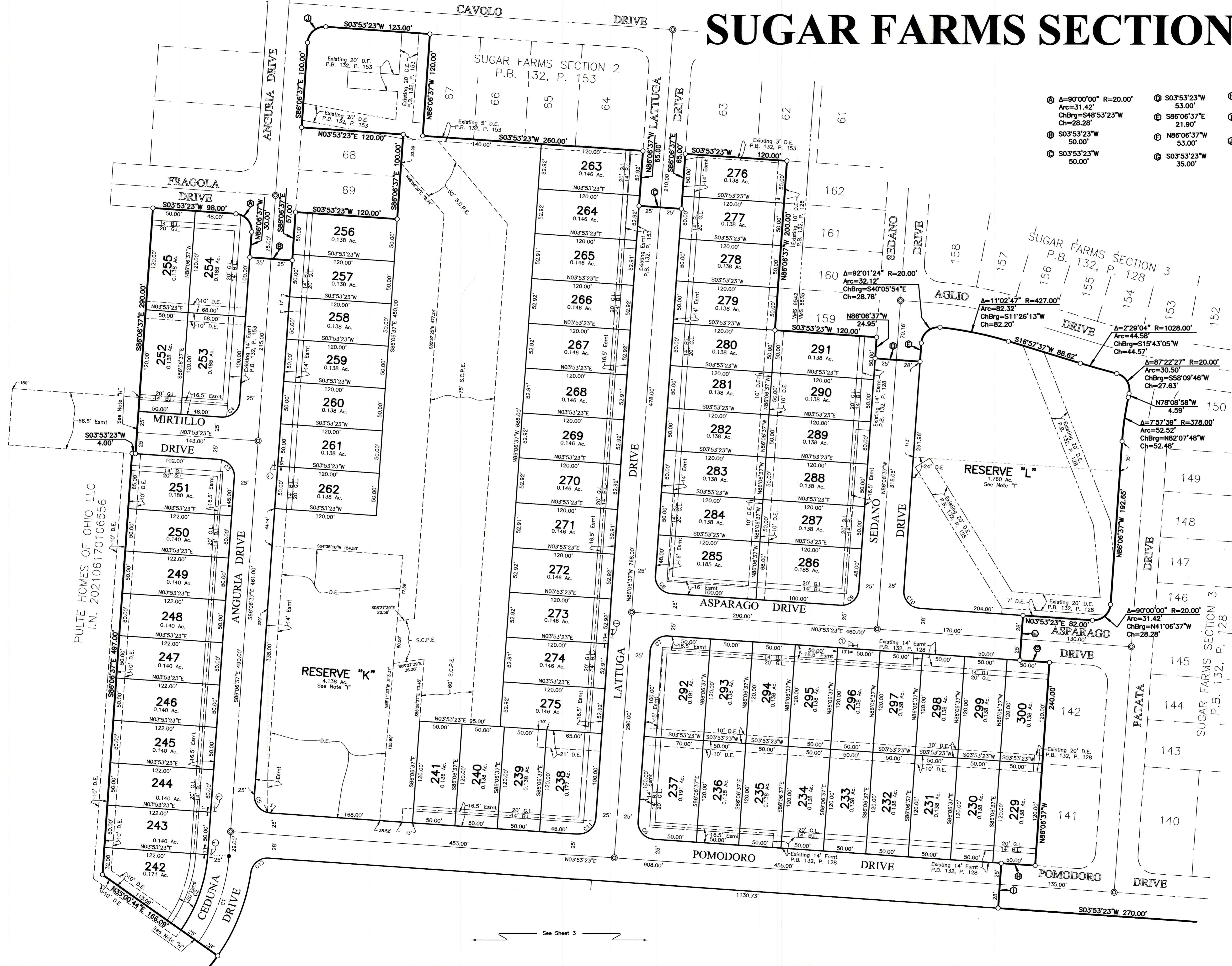


SUGAR FARMS SECTION 5

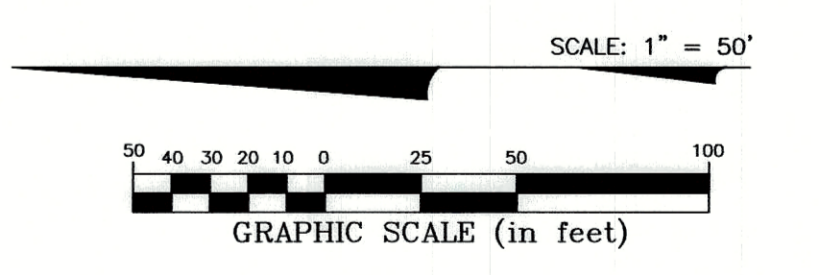


- Ⓐ A=90°00'00" R=20.00'
Arc=31.42'
ChBrg=S48°53'23"W
Ch=28.28'
- Ⓑ S03°53'23"W
50.00'
- Ⓒ S03°53'23"W
50.00'
- Ⓓ S03°53'23"W
53.00'
- Ⓔ S03°53'23"W
21.90'
- Ⓕ N86°06'37"W
53.00'
- Ⓖ N86°06'37"W
53.00'
- Ⓗ S03°53'23"W
35.00'
- Ⓚ A=68°26'13" R=20.00'
Arc=23.89'
ChBrg=N40°48'26"W
Ch=22.49'
- Ⓛ A=90°00'00" R=20.00'
Arc=31.42'
ChBrg=S41°06'37"E
Ch=28.28'

CURVE NO.	DELTA	RADIUS	LENGTH	CHORD BEARING	CHORD DISTANCE
C1	31°07'21"	200.00'	108.64'	N 70°32'57" W	107.31'
C2	31°07'21"	175.00'	95.06'	S 70°32'57" E	93.89'
C3	90°00'00"	20.00'	31.42'	N 48°53'23" E	28.28'
C4	90°00'00"	20.00'	31.42'	S 41°06'37" E	28.28'
C5	90°00'00"	20.00'	31.42'	S 48°53'23" W	28.28'
C6	90°00'00"	20.00'	31.42'	S 48°53'23" W	28.28'
C7	90°00'00"	20.00'	31.42'	N 41°06'37" W	28.28'
C8	90°00'00"	20.00'	31.42'	S 48°53'23" W	28.28'
C9	90°00'00"	20.00'	31.42'	S 41°06'37" E	28.28'
C10	90°00'00"	20.00'	31.42'	S 48°53'23" W	28.28'
C11	90°00'00"	20.00'	31.42'	S 41°06'37" E	28.28'
C12	85°36'22"	228.00'	340.66'	S 38°54'48" E	309.84'
C13	85°36'22"	20.00'	29.88'	N 38°54'48" W	27.18'
C14	58°52'39"	175.00'	179.83'	S 25°32'57" E	172.02'
C15	68°26'13"	20.00'	23.89'	S 40°48'26" E	22.49'
C16	90°00'00"	20.00'	31.42'	N 38°24'40" E	28.28'

LINE	BEARING	DISTANCE
L1	N41°06'37"W	52.53'
L2	S03°53'23"W	25.26'
L3	S85°55'49"W	20.19'

- Legend**
- B.L. = Building Line
 - G.L. = Garage Line
 - D.E. = Drainage Easement
 - Esmt. = Easement
 - (R) = Radial to Centerline
 - (NR) = Not Radial to Centerline
 - S.C.P.E. = Stormwater Control Practice Easement
 - Ⓢ 10' No Vehicular Access - See Note "K"



- Line Type Legend**
- Existing Property Line
 - - - Existing R/W Line
 - · - Existing R/W Centerline
 - · - Existing Easement Line
 - Subdivision Boundary Line
 - Lot Line
 - - - R/W Line
 - · - R/W Centerline
 - · - Easement Line

\N:\projects\11\BNA\SUBDIVISION\PLAT\0220511.dwg, PLOT: 0220511, DATE: 2/22/2023 10:37:38 AM, User: JAMSTON, on: 3/29/2023 9:47:54 AM
 Xref: 202106170106556.dwg, 20220511.dwg, 20220511.dwg

PULTE HOMES OF OHIO LLC
 I.N. 202106170106556

See Sheet 3