

EXHIBIT A

PROPERTY DESCRIPTION AND DEPICTION

Situated in the State of Ohio, County of Franklin, City of Columbus, located in Section 7, Quarter Township 2, Township 2, Range 16, United States Military Lands (all references refer to the records of the Recorder's Office, Franklin County, Ohio) being more particularly bounded and described as follows:

Beginning at the northeasterly corner of Reserve P of that subdivision entitled "Upper Albany Section 3" of record in Plat Book 102, Pages 11 and 12;

thence South  $03^{\circ}37'54''$  West, a distance of 1778.87 feet to a point;

thence South  $03^{\circ}37'48''$  West, a distance of 1222.45 feet to a point;

thence westwardly, with the arc of a curve to the right having a radius of 1181.00 feet, a central angle of  $18^{\circ}26'58''$  and a chord that bears North  $77^{\circ}15'13''$  West, a chord distance of 378.65 feet to a point;

thence westwardly, with the arc of a curve to the left having a radius of 819.00 feet, a central angle of  $14^{\circ}48'43''$  and a chord that bears North  $75^{\circ}26'06''$  West, a chord distance of 211.13 feet to a point;

thence South  $03^{\circ}37'34''$  West, a distance of 139.90 feet to a point;

thence South  $48^{\circ}37'34''$  West, a distance of 440.00 feet to a point;

thence North  $86^{\circ}22'24''$  West, a distance of 353.56 feet to a point;

thence South  $03^{\circ}37'59''$  West, a distance of 32.98 feet to a point;

thence southwardly, with the arc of a curve to the right having a radius of 605.39 feet, a central angle of  $13^{\circ}37'22''$  and a chord that bears South  $10^{\circ}26'33''$  West, a chord distance of 143.60 feet to a point;

thence southwardly, with the arc of a curve to the left having a radius of 842.13 feet, a central angle of  $16^{\circ}09'41''$  and a chord that bears South  $12^{\circ}00'20''$  West, a chord distance of 236.75 feet to a point;

thence South  $03^{\circ}37'59''$  West, a distance of 445.00 feet to a point;

thence southwardly, with the arc of a curve to the left having a radius of 423.23 feet, a central angle of  $30^{\circ}15'42''$  and a chord that bears South  $11^{\circ}29'52''$  East, a chord distance of 220.95 feet to a point;

thence South  $26^{\circ}37'43''$  East, a distance of 73.96 feet to a point;

thence southeastwardly, with the arc of a curve to the right having a radius of 650.00 feet, a central angle of 12°15'02" and a chord that bears South 20°30'13" East, a chord distance of 138.71 feet to a point;

thence North 85°59'39" West, a distance of 1156.69 feet to a point;

thence South 03°37'59" West, a distance of 745.02 feet to a point;

thence North 85°59'39" West, a distance of 408.79 feet to a point;

thence North 03°45'13" East, a distance of 745.01 feet to a point;

thence North 03°45'13" East, a distance of 1142.37 feet to a point;

thence North 03°45'13" East, a distance of 802.13 feet to a point;

thence North 03°29'42" East, a distance of 631.28 feet to a point;

thence North 03°29'42" East, a distance of 622.86 feet to a point;

thence North 03°29'42" East, a distance of 603.01 feet to a point;

thence South 86°22'02" East, a distance of 886.91 feet to a point;

thence North 50°42'21" East, a distance of 230.21 feet to a point;

thence South 85°36'35" East, a distance of 796.61 feet to a point;

thence South 86°05'49" East, a distance of 483.23 feet to a point;

thence North 21°02'06" East, a distance of 319.93 feet to a point;

thence North 03°45'40" East, a distance of 75.00 feet to a point;

thence North 13°30'46" West, a distance of 288.51 feet to a point;

thence South 86°14'20" East, a distance of 363.76 feet to the Point of Beginning and containing 211.418 acres of land, more or less.

This description was prepared from existing records and is not to be used for transfer.

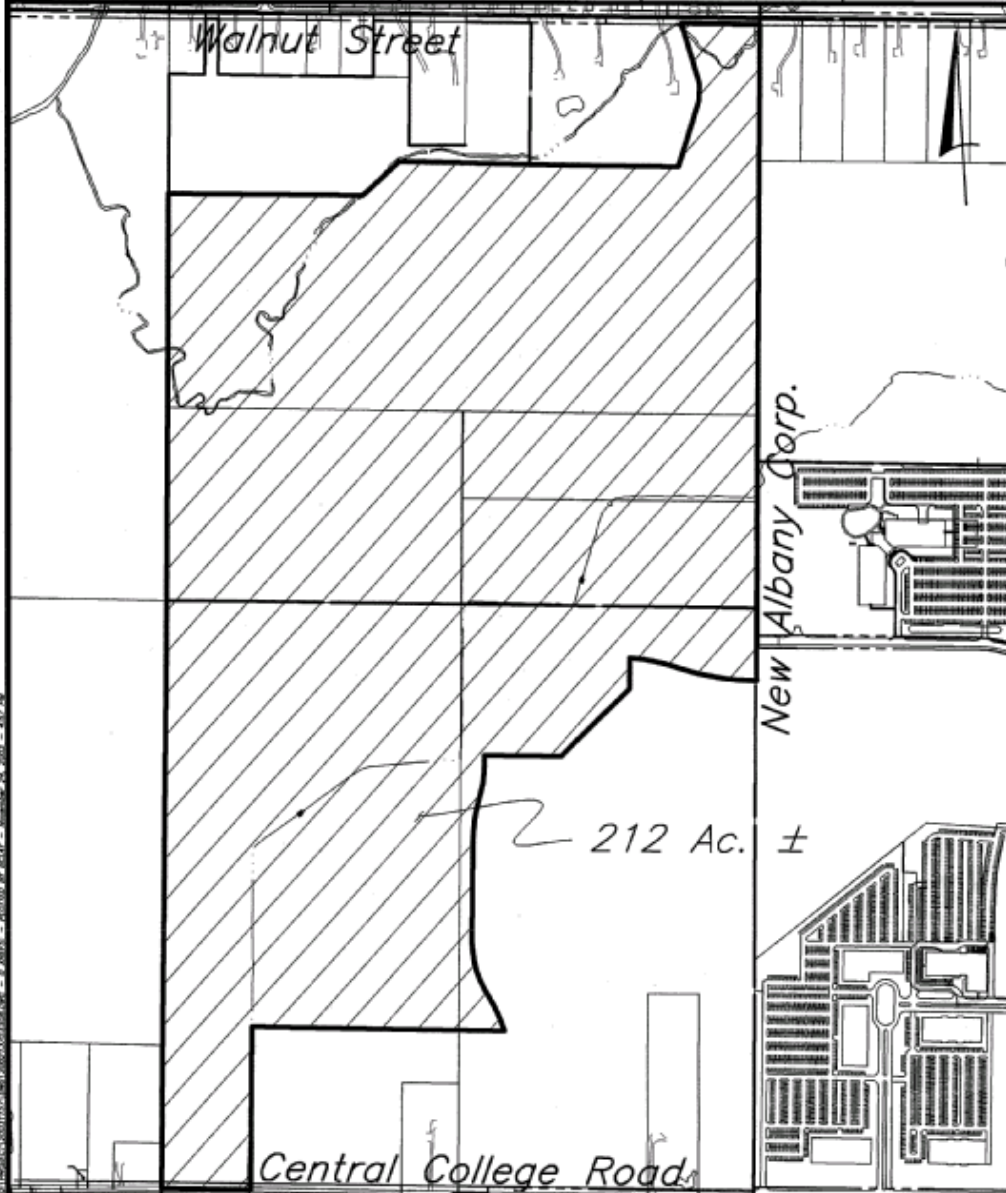
**EMHT**  
ENGINEERING & ARCHITECTURE  
1000 W. MAIN ST. WASHINGTON, DC 20004  
TEL: 202-462-1100 FAX: 202-462-1101  
WWW.EMHT.COM

### EXHIBIT "A"

Date: Nov. 24, 2003

Job No. 20031157

Scale: 1" = 600'



01/26/2004 09:03:13 AM \\server1\planning\20031157.dwg - P. 0005 - REVISED BY: JAC - November 24, 2003 - 4:12 PM