

# ANNEXATION AN10-006

## ± 2.39 Acres in Clinton Township

### Julia E. Pfeifer



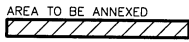
Evans, Mechwart, Hamblaton & Titon, Inc.  
 Engineers • Surveyors • Planners • Scientists  
 5500 New Albany Road, Columbus, OH 43054  
 Phone: 614.775.4550 Toll free: 888.773.3648  
 emht.com

**2.3 AC PLAT OF ANNEXATION**  
 TO: CITY OF COLUMBUS FROM: TOWNSHIP OF CLINTON  
 QUARTER TOWNSHIP 3, TOWNSHIP 1, RANGE 18  
 UNITED STATES MILITARY LANDS  
 TOWNSHIP OF CLINTON, COUNTY OF FRANKLIN, STATE OHIO

Date: November 5, 2010      Job No. 2010-1424      Scale: 1" = 60'

EXISTING CITY OF COLUMBUS CORP. LINE  
 EXISTING CLINTON TOWNSHIP CORP. LINE

PROPOSED CITY OF COLUMBUS CORP. LINE



This annexation does not create any unincorporated islands.

The total perimeter of the annexation area is 1,406 feet, of which 325 feet is contiguous with the City of Columbus, giving 23% perimeter contiguity.



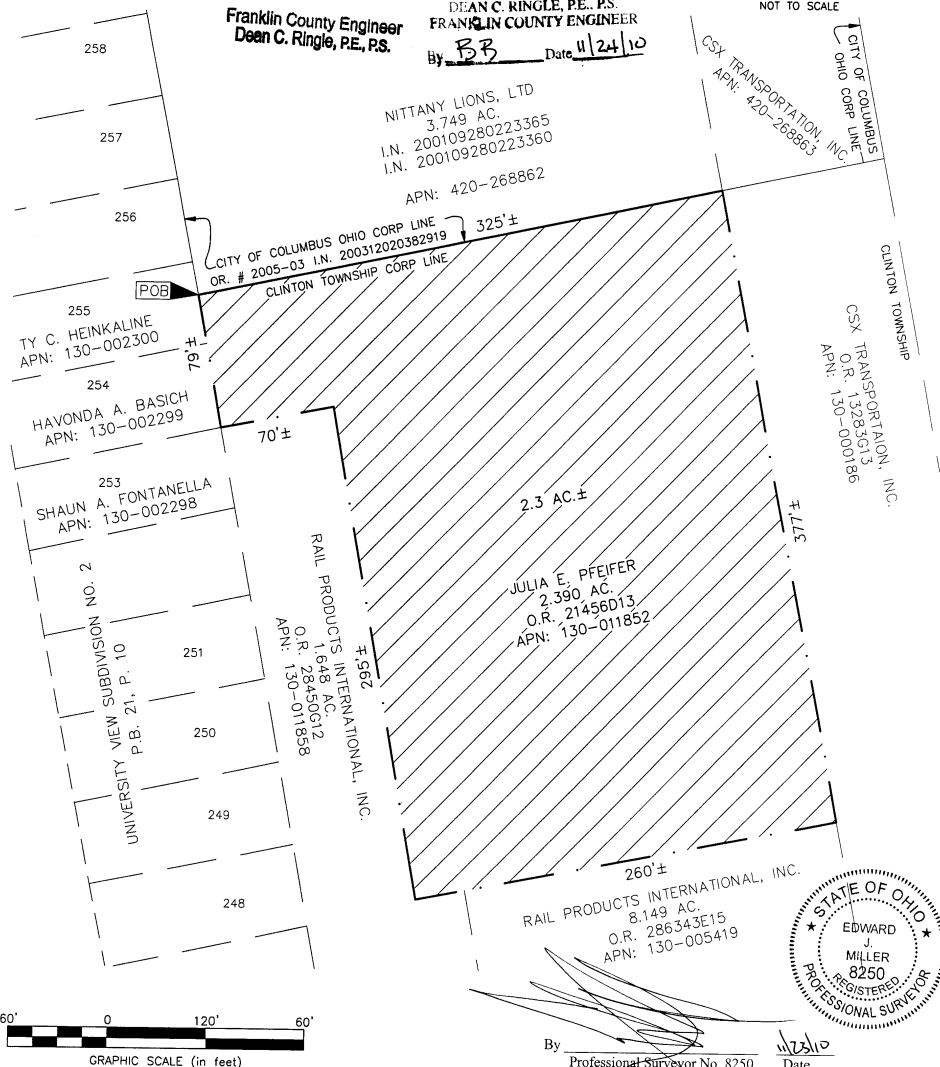
LOCATION MAP AND BACKGROUND DRAWING  
 NOT TO SCALE

**RECEIVED**

NOV 24 2010

Franklin County Engineer  
 Dean C. Ringle, PE, PS.

ANNEXATION  
 PLAT & DESCRIPTION  
 ACCEPTABLE  
 DEAN C. RINGLE, PE, PS.  
 FRANKLIN COUNTY ENGINEER  
 By BB Date 11/24/10



\Z:\2010\424\20101424ANNEX.DWG plotted by BAKER, THERESA on 11/22/2010 8:05:19 AM last saved by BAKER on 11/16/2010 1:57:56 PM

