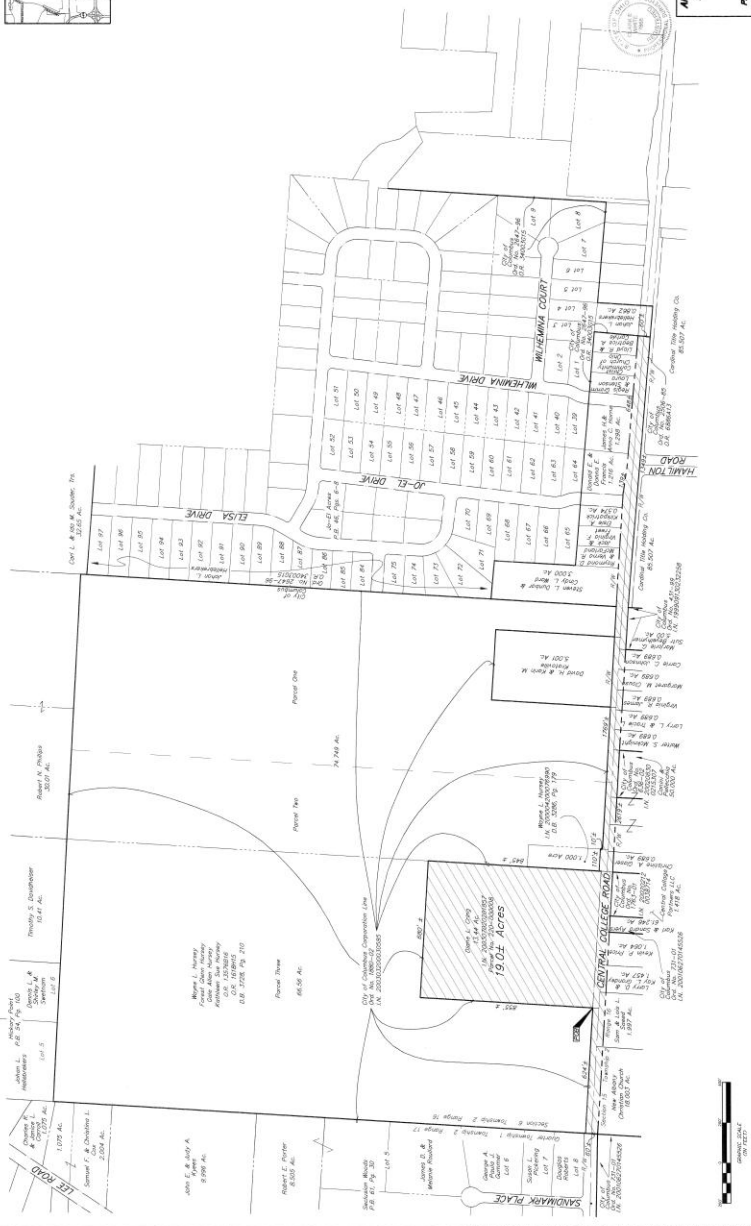


# MAP ANNEXATION AN03-031R 19.0 Acres in Plain Township Diane Cring

ANNEXATION EXHIBIT  
SECTION 6, TOWNSHIP 2, RANGE 16  
UNITED STATES MILITARY LANDS  
TOWNSHIP OF PLAIN, FRANKLIN COUNTY, OHIO



ANNEXATION EXHIBIT  
SECTION 6, TOWNSHIP 2, RANGE 16  
UNITED STATES MILITARY LANDS  
TOWNSHIP OF PLAIN, FRANKLIN COUNTY, OHIO

ANNEX NO. ORD NO.  
PROPOSED ANNEXATION OF 19.0 ACRES  
TO THE  
CITY OF COLUMBUS  
FROM  
PLAIN TOWNSHIP, FRANKLIN COUNTY, OHIO  
DATE: 11/15/2017 SCALE: 1" = 200'

