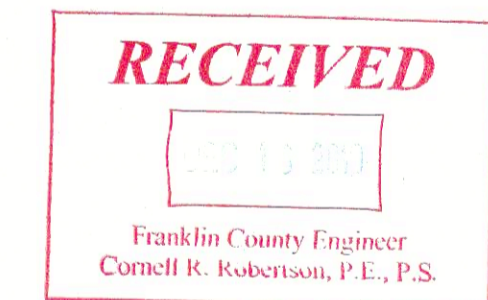
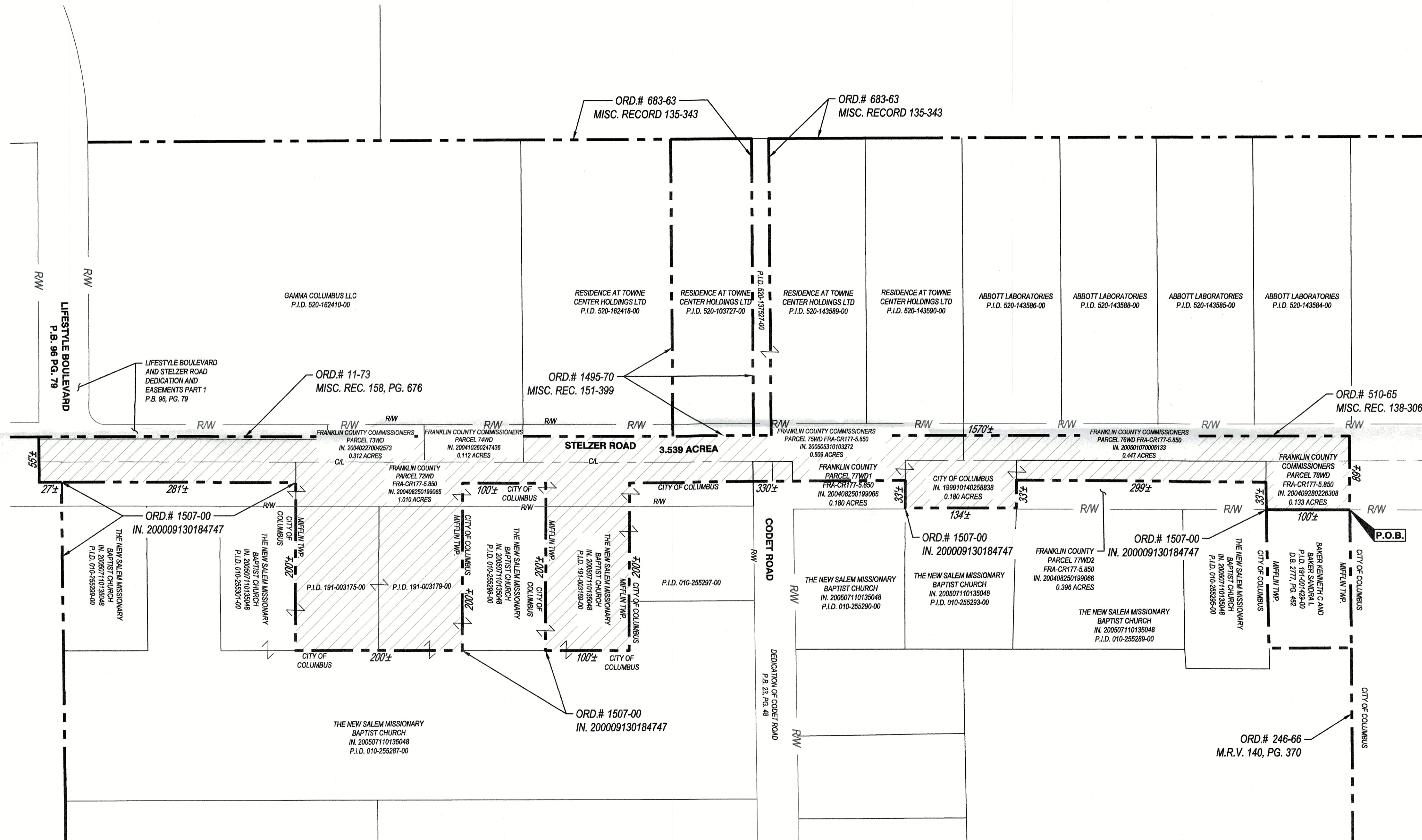
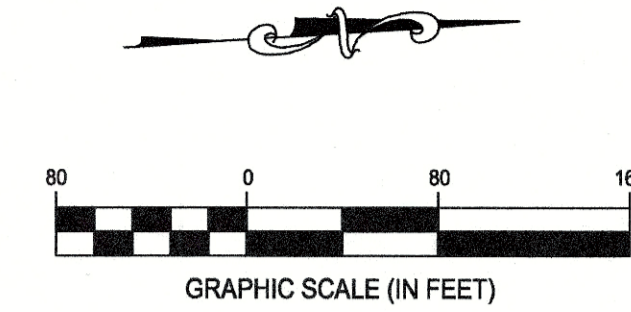


**PROPOSED ANNEXATION OF 3.539± ACRES
FROM MIFFLIN TOWNSHIP
TO CITY OF COLUMBUS**
SITUATED IN THE STATE OF OHIO, COUNTY OF FRANKLIN, TOWNSHIP OF MIFFLIN,
QUARTER TOWNSHIP 1 & 2, TOWNSHIP 1, RANGE 17, UNITED STATES MILITARY LANDS



ANNEXATION
PLAT & DESCRIPTION
ACCEPTABLE
CORNELL R. ROBERTSON, P.E., P.S.
FRANKLIN COUNTY ENGINEER
By: *RK* Date: 12/13/19



Russell Koenig 12-16-2019
RUSSELL KOENIG, PS, PE, S-8358 DATE

SURVEYOR:
CESO, INC.
2800 CORPORATE EXCHANGE DR, STE 160
COLUMBUS, OH 43231

LEGEND

- EXIST. CITY OF COLUMBUS CORP. LINE
- EXIST. PARCEL LINE
- PROP. ANNEXATION CORP. LINE
- PROP. AREA TO BE ANNEXED (3.539 ACRES)

ACREAGE BREAKDOWN:

PID: 191-003169-00	0.395 ACRES
PID: 191-003179-00	0.395 ACRES
PID: 191-003175-00	0.395 ACRES
EXISTING ROW	2.354 ACRES
TOTAL	3.539 ACRES

TOTAL PERIMETER OF ANNEXATION IS 4183 FEET

CONTIGUITY NOTE:

THE TOTAL PERIMETER OF ANNEXATION AREA IS 4183 FEET, OF WHICH 2343 FEET ARE CONTIGUOUS WITH THE CITY OF COLUMBUS BY ORDINANCE NUMBER 1507-00, 760 FEET ARE CONTIGUOUS WITH THE CITY OF COLUMBUS BY ORDINANCE NUMBER 11-73, 96 FEET ARE CONTIGUOUS WITH THE CITY OF COLUMBUS BY ORDINANCE NUMBER 1495-70, 20 FEET ARE CONTIGUOUS WITH THE CITY OF COLUMBUS BY ORDINANCE NUMBER 683-63, 693 FEET ARE CONTIGUOUS WITH THE CITY OF COLUMBUS BY ORDINANCE NUMBER 510-65 AND 89 FEET ARE CONTIGUOUS WITH THE CITY OF COLUMBUS BY ORDINANCE NUMBER 246-66, GIVING 93% CONTIGUITY.

STELZER ROAD ANNEXATION

3.539± ACRES

CITY OF COLUMBUS		FRANKLIN COUNTY, OHIO	
SCALE: 1"=80'	DATE: 12/13/2019	JOB NO.: 757375	SHEET NO.: 1 OF 1
DESIGN: N/A	 WWW.CESOINC.COM		
DRAWN: ALB			
CHECKED: TAW			