

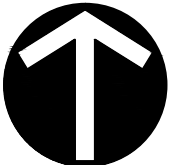
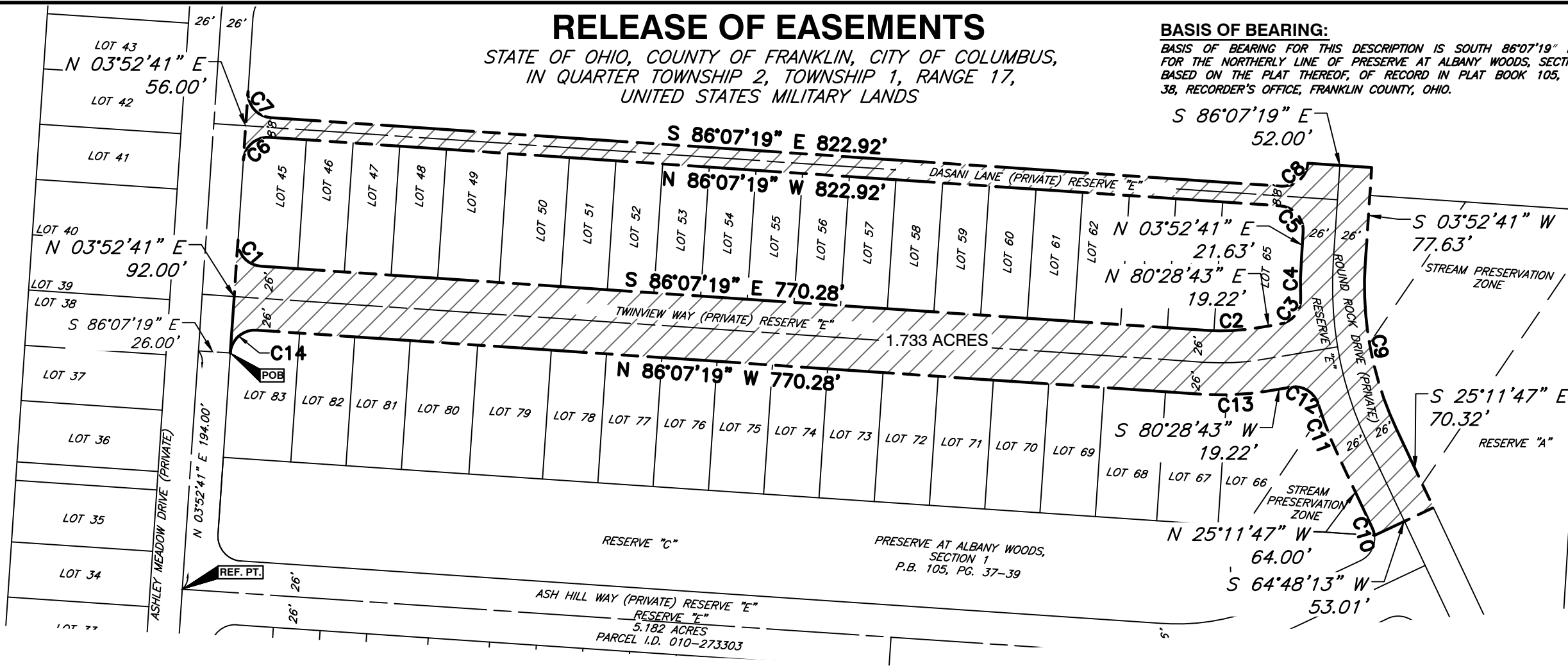
P:\2013\133-034\Survey\CADD\133-034 RELEASE OF EASEMENTS 2.dwg(RELEASE 8.5X14) LS:(04/29/2014 - ballen) - LP: 6/10/2014 8:12 AM

RELEASE OF EASEMENTS

STATE OF OHIO, COUNTY OF FRANKLIN, CITY OF COLUMBUS,
IN QUARTER TOWNSHIP 2, TOWNSHIP 1, RANGE 17,
UNITED STATES MILITARY LANDS

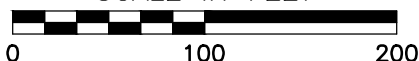
BASIS OF BEARING:

BASIS OF BEARING FOR THIS DESCRIPTION IS SOUTH 86°07'19" EAST,
FOR THE NORTHERLY LINE OF PRESERVE AT ALBANY WOODS, SECTION 1,
BASED ON THE PLAT THEREOF, OF RECORD IN PLAT BOOK 105, PAGE
38, RECORDER'S OFFICE, FRANKLIN COUNTY, OHIO.



NORTH

SCALE IN FEET



CIVIL & ENVIRONMENTAL CONSULTANTS, INC.
JOHN J. RAAB
PROFESSIONAL SURVEYOR NO.: 7863



Civil & Environmental Consultants, Inc.

8740 Orion Place, Suite 100 - Columbus, OH 43240

614-540-6633 · 888-598-6808

www.cecinc.com

RELEASE OF EASEMENT

Situate In
CITY OF COLUMBUS
FRANKLIN COUNTY AND STATE OF OHIO
Made For
THE PRESERVE AT ALBANY WOODS
VILLAGE COMMUNITIES REAL ESTATE, INC.

DATE:	APRIL 2014	SCALE:	1"=100'	DRAWING NO.:	
DRAWN BY:	BA	CHECKED BY:	JJR	RE	
PROJECT NO:	133-034	APPROVED BY:	JAM		SHEET 1 OF 2

P:\2013\133-034\Survey\CADD\133-034 RELEASE OF EASEMENTS 2.dwg[RELEASE 8.5X14 (2)] LS:(04/29/2014 - ballen) - LP: 6/10/2014 8:12 AM

RELEASE OF EASEMENTS

STATE OF OHIO, COUNTY OF FRANKLIN, CITY OF COLUMBUS,
 IN QUARTER TOWNSHIP 2, TOWNSHIP 1, RANGE 17,
 UNITED STATES MILITARY LANDS

CURVE TABLE					
CURVE #	RADIUS	DELTA	LENGTH	CHB	CHL
C1	20.00'	90°00'00"	31.42'	S 41°07'19" E	28.28'
C2	174.00'	13°23'58"	40.69'	N 87°10'42" E	40.60'
C3	20.00'	82°21'36"	28.75'	N 39°17'55" E	26.34'
C4	326.00'	5°45'34"	32.77'	N 0°59'54" E	32.76'
C5	20.00'	90°00'00"	31.42'	N 41°07'19" W	28.28'
C6	20.00'	90°00'00"	31.42'	S 48°52'41" W	28.28'
C7	20.00'	90°00'00"	31.42'	S 41°07'19" E	28.28'
C8	20.00'	90°00'00"	31.42'	N 48°52'41" E	28.28'
C9	274.00'	29°04'28"	139.04'	S 10°39'33" E	137.55'
C10	20.68'	17°47'36"	6.42'	N 16°05'27" W	6.40'
C11	326.00'	8°02'06"	45.72'	N 21°10'44" W	45.68'
C12	20.00'	82°21'36"	28.75'	N 58°20'29" W	26.34'
C13	226.00'	13°23'58"	52.85'	S 87°10'42" W	52.73'
C14	20.00'	90°00'00"	31.42'	S 48°52'41" W	28.28'



Civil & Environmental Consultants, Inc.

8740 Orion Place, Suite 100 - Columbus, OH 43240
 614-540-6633 · 888-598-6808
 www.cecinc.com

RELEASE OF EASEMENT

Situate In
CITY OF COLUMBUS
FRANKLIN COUNTY AND STATE OF OHIO
 Made For
THE PRESERVE AT ALBANY WOODS
VILLAGE COMMUNITIES REAL ESTATE, INC.

DATE:	APRIL 2014	SCALE:	1"=100'	DRAWING NO.:	RE
DRAWN BY:	BA	CHECKED BY:	JJR		
PROJECT NO:	133-034	APPROVED BY:	JAM	SHEET 2 OF 2	