

SANITARY SEWER EASEMENT VACATION
0.207 ACRE

Situated in the State of Ohio, County of Franklin, City of Columbus, being part of Lots 30 and 31 as the same are numbered and delineated upon the Recorded Plat of Flavell Tuller's Survey of Section 1, Township 2, Range 19, United States Military Lands, of record in Plat Book 3, Page 60 and being out that 11.021 acre tract of land conveyed to Olde Sawmill Square Shopping Center by deed of record in Official Record 1940, Page B04 and being a part of an existing sanitary sewer easement granted to City of Columbus of record in Official Record 1147, Page C07 (all records refer to the Recorder's Office, Franklin County, Ohio) and being more particularly described as follows:

Beginning, for reference, at the common southerly corner of Lot 596 of "Olde Sawmill Section 6", a subdivision of record in Plat Book 52, Page 73 with said 11.021 acre tract and being in the northerly line of that 16.590 acre tract of land conveyed to Sawmill Commons L.P., an Ohio limited partnership by deed of record in Instrument Number 199910010247158;

thence South 82° 43' 54" West, with a southerly line of said 11.021 acre tract and said northerly line, a distance of 40.00 feet to a point;

thence North 07° 16' 06" West, across said 11.021 acre tract and an existing 20 foot sanitary easement of record in Plat Book 52, Page 73, a distance of 10.36 feet to a corner of said existing sanitary sewer easement (OR 1147C07) to the TRUE POINT OF BEGINNING;

thence continuing across said 11.021 acre tract and with the perimeter of said existing sanitary sewer easement (OR 1147C07), the following courses and distances:

North 75° 30' 39" West, a distance of 180.90 feet to a point;

North 02° 38' 16" East, a distance of 64.23 feet to a point;

North 85° 21' 44" West, a distance of 316.17 feet to a point;

North 49° 41' 09" West, across said sanitary sewer easement, a distance of 17.15 feet to a point;

South 85° 21' 44" East, a distance of 329.73 feet to a point;

North 02° 38' 16" East, a distance of 300.80 feet to a point;

South 87° 21' 39" East, a distance of 10.00 feet to a point;

South 02° 38' 16" West, a distance of 366.92 feet to a point;

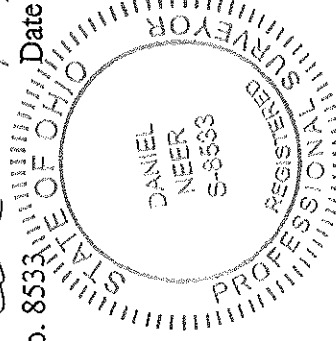
South 75° 30' 39" East, a distance of 172.79 feet to a point in the northerly line of said existing 20 foot sanitary easement;

thence South 14° 29' 21" West, across said existing 20 foot sanitary easement, a distance of 10.00 feet to the TRUE POINT OF BEGINNING, containing 0.207 acre of land, more or less.

EVANS, MECHWART, HAMBLETON & TILTON, INC.

Daniel Neer

Registered Surveyor No. 8533 Date 1/22/13





Evans, Mechwart, Hambleton & Tilton, Inc.
 Engineers • Surveyors • Planners • Scientists
 5500 New Albany Road, Columbus, OH 43054
 Phone: 614.775.4500
 Toll Free: 888.775.3648
 emht.com

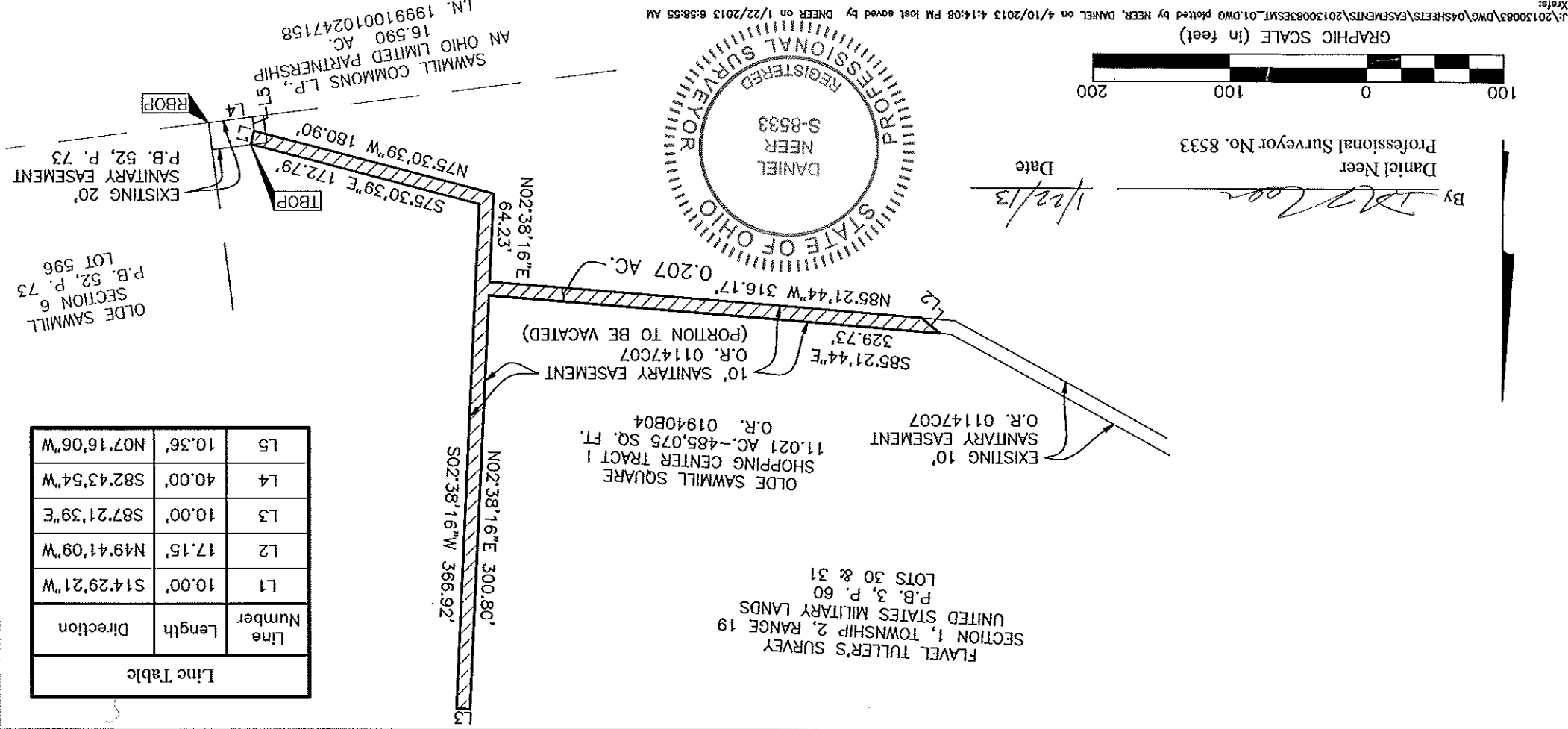
EASEMENT VACATION

FARM LOT 30 & 31, SECTION 1, TOWNSHIP 2, RANGE 19 UNITED STATE MILITARY LANDS

CITY OF COLUMBUS, COUNTY OF FRANKLIN, STATE OF OHIO

Date: 1/16/2013
 Scale: 1" = 100
 Job No. 2013-0083

Line Table		
Line Number	Length	Direction
L1	10.00'	S14°29'21"W
L2	17.15'	N49°41'09"W
L3	10.00'	S87°21'39"E
L4	40.00'	S82°43'54"W
L5	10.36'	N07°16'06"W



J:\20130083\DWG\04SHEETS\EASEMENTS\20130083CSMT_01.DWG plotted by NEER, DANIEL on 4/10/2013 4:14:08 PM last saved by DNEER on 1/22/2013 6:58:55 AM Xrefs: