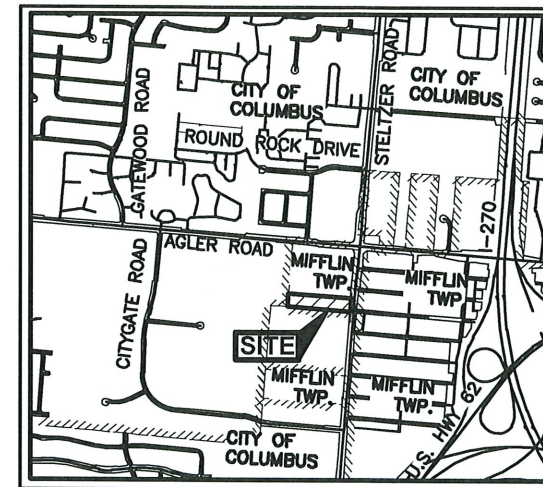
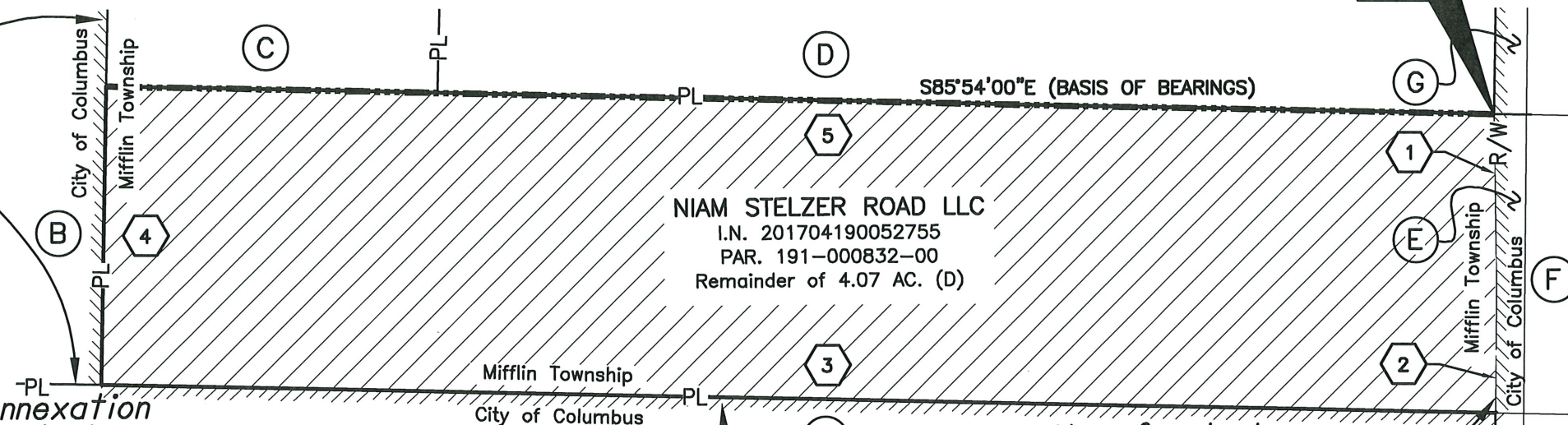


**PROPOSED ANNEXATION OF 3.8+/- ACRES
FROM MIFFLIN TOWNSHIP TO THE CITY OF COLUMBUS**

Located in State of Ohio, County of Franklin, Township of Mifflin,
Quarter Township 3, Township 1, Range 17, United States Military District

Ex. City of Columbus
Corporation Line
Ord. No. 1066-64
M.R. 137-331

ANNEXATION
PLAT & DESCRIPTION
ACCEPTABLE
By: *[Signature]* Date: 8/17/21
CORNELL R. ROBERTSON, P.E., P.S.
FRANKLIN COUNTY ENGINEER



VICINITY MAP
N.T.S.

STELZER ROAD
(C.R. 177)
(PUBLIC ROADWAY)
(VARIES)

LINE TABLE		
LINE	LENGTH	BEARING
1	112.2'±	S02°14'10"W
2	77.7'±	S03°33'01"W
3	884.5'±	N85°54'00"W
4	188.0'±	N04°03'00"E
5	880.4'±	S85°54'00"E

Pending Annexation
City of Columbus
Corporation Line
Case No. 10-21
Ord. No. -----
Inst. No. -----

TUCKER BEAR CAPITAL, LLC
I.N. 202011060176332
PAR. 191-002667-00
2.707 AC. (D)
LESS & EXCEPTING 0.133 AC. (D)

Ex. City of Columbus
Corporation Line
Case No. 22-06
Ord. No. 0043-2007
Inst. No. 200705150084538
Inst. No. 200705150084542

TRUSTEES AGLER RD PARCEL #3 LLC
I.N. 201008190106494
PAR. 520-143575-00
5 AC. (D)
LESS & EXCEPTING 0.216 AC. (D)

FRANKLIN COUNTY COMMISSIONERS
I.N. 200411180264457
PARCEL 53WD
0.082 AC. (D)

**LEWIS TED OATTS, TRUSTEE OF THE
LEWIS TED OATTS' REVOCABLE LIVING
TRUST DTD 03/31/2011**
I.N. 201611140156860
PAR. 191-001745-00
4 AC. (D)
LESS & EXCEPTING 0.179 AC. (D) & 0.076 AC. (D)

FRANKLIN COUNTY COMMISSIONERS
O.R.V. 7662 PG. G20
PARCEL 63WD
0.175 AC. (D)

STELTZER ROAD BAPTIST CHURCH
D.B. 2645 PG. 245
now known as UNITED FAITH
INTERNATIONAL BAPTIST CHURCH
I.N. 200403120054876
(AFFIDAVIT - STATEMENT OF FACTS)
PAR. 191-001427-00
1.267 AC. (D)
LESS & EXCEPTING 0.070 AC. (D)
& 0.168 AC. (D)

FRANKLIN COUNTY COMMISSIONERS
INST NO. 200412060277414
PARCEL 54WD
0.168 AC. (D)

FRANKLIN COUNTY COMMISSIONERS
INST NO. 200408120188054
PARCEL 52WD
0.133 AC. (D)

0 100 200
Scale in Feet

Legend

- Annexation Area
- Existing Corporation Line
- Proposed Corporation Line

BASIS OF BEARINGS

The bearings shown on this plat are based on a survey of record in Instrument Number 201704190052755. The northerly property line of the proposed annexation area, having a bearing of S85°54'00"E as described in said survey, serves as the designated "basis of bearing" for this plat.

CONTIGUITY NOTE

Total Perimeter of Annexation is 2140.7 feet of which 1260.6 feet is contiguous with the City of Columbus by Ordinance Number 0043-2007, 1066-64, and _____, giving 59% Perimeter Contiguity.

NOTE

This annexation does not create an island of unincorporated areas within the limits of the area to be annexed.

This exhibit is for Annexation purposes only and is not to be used for transfer.



BY: *Matthew Lee Sloat 8/17/21*

Matthew Lee Sloat, P.E., P.S.
Registered Surveyor No. 8342

DRWN BY TKC CHK BY CK DATE 08-16-2021

RECEIVED

AUG 17 2021

Franklin County Engineer
Cornell R. Robertson, P.E., P.S.

E. P. FERRIS
AND
ASSOCIATES
INC

880 KING AVENUE
COLUMBUS, OHIO 43212
(614) 299-2999
(614) 299-2992 (Fax)
www.EPFERRIS.com

Consulting Civil Engineers and Surveyors