



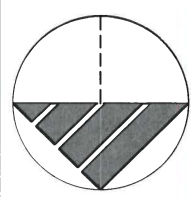
**GPD GROUP**  
 Genoa, Ohio, Schomberg, Barnes & DeWitt, Inc.  
 520 South Main Street, Suite 2331  
 Akron, Ohio 44311  
 330.572.1700 Fax: 330.572.1701  
 Copyright: Genoa, Ohio, Schomberg, Barnes & DeWitt, Inc. 2008

**ACCEPTABLE**  
 CORNELL R. ROBERTSON, P.E., P.S.  
 FRANKLIN COUNTY ENGINEER

**ANNEXATION**  
 PRAIRIE TOWNSHIP  
 TO  
 COLUMBUS, OHIO 43228

JOB NO.  
**2019059.06**

PROJECT MANAGER	DESIGNER
SLM	JEK

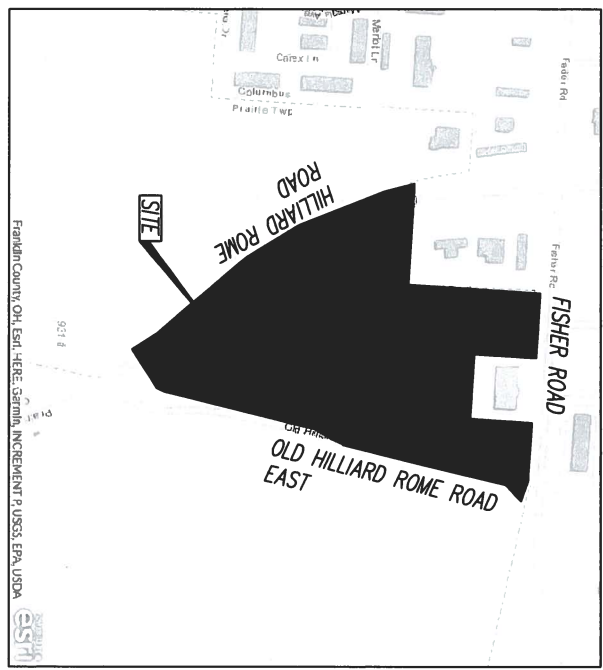
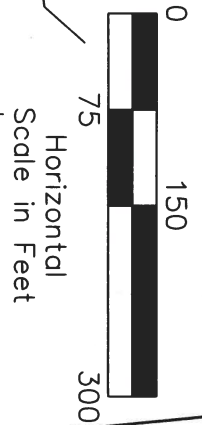


# ANNEXATION OF 17.3 ± ACRES

TO THE CITY OF COLUMBUS FROM THE TOWNSHIP OF PRAIRIE  
 V.M.S. NOS. 7326 & 1484  
 PRAIRIE TOWNSHIP  
 COUNTY OF FRANKLIN  
 STATE OF OHIO

ANNEXATION  
 CASE 01-16  
 ORD. 1337-2016  
 I.N. 201607010084924

ZEEBOT, LLC  
 INSTR. No. 201812210172415  
 P.N. 240-000003-00  
 PENDING  
 ANNEXATION



## LOCATION MAP

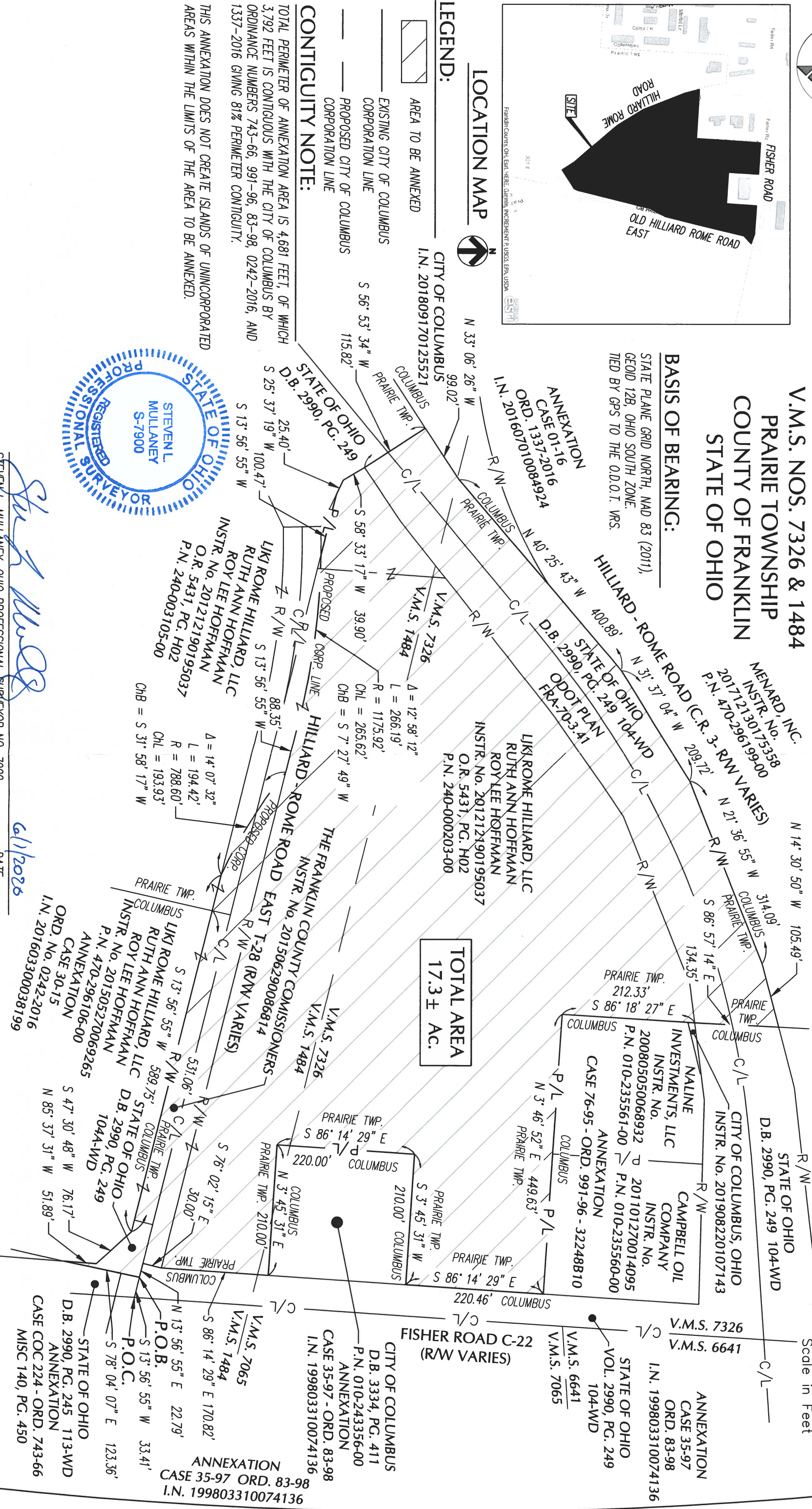
**LEGEND:**  
 AREA TO BE ANNEXED  
 EXISTING CITY OF COLUMBUS CORPORATION LINE  
 PROPOSED CITY OF COLUMBUS CORPORATION LINE

## CONTIGUITY NOTE:

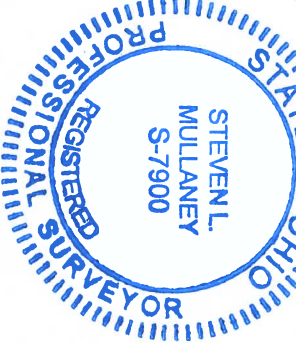
TOTAL PERIMETER OF ANNEXATION AREA IS 4,681 FEET, OF WHICH 3,792 FEET IS CONTIGUOUS WITH THE CITY OF COLUMBUS BY ORDINANCE NUMBERS 743-66, 991-96, 83-98, 0242-2016, AND 1337-2016 GIVING 81% PERIMETER CONTIGUITY.

THIS ANNEXATION DOES NOT CREATE ISLANDS OF UNINCORPORATED AREAS WITHIN THE LIMITS OF THE AREA TO BE ANNEXED.

**BASIS OF BEARING:**  
 STATE PLANE GRID NORTH, NAD 83 (2011),  
 GEOID 12B, OHIO SOUTH ZONE.  
 TIED BY GPS TO THE O.D.O.T. WRS.



**TOTAL AREA**  
 17.3 ± AC.



*Steven L. Mullaney*  
 STEVEN L. MULLANEY, OHIO PROFESSIONAL SURVEYOR NO. 7900

*6/1/2026*  
 DATE

ANNEXATION CASE 35-97 ORD. 83-98 I.N. 199803310074136  
 CITY OF COLUMBUS D.B. 3334, PG. 411 P.N. 010-2433356-00  
 ANNEXATION CASE 35-97 - ORD. 83-98 I.N. 199803310074136  
 STATE OF OHIO VOL. 2990, PG. 249  
 ANNEXATION CASE 35-97 ORD. 83-98 I.N. 199803310074136  
 STATE OF OHIO D.B. 2990, PG. 245 113-WD ANNEXATION CASE COC 224 - ORD. 743-66 MISC 140, PG. 450