

203-002  
 Final Received by Planning Firm 7/1/03

*Heidi G. Brown*  
 7-1-03

- 1. 4" - 12" TREE
- 2. 6" - 12" TREE
- 3. 12" - 18" TREE
- 4. 18" - 24" TREE
- 5. 24" - 30" TREE
- 6. 30" - 36" TREE
- 7. 36" - 42" TREE
- 8. 42" - 48" TREE
- 9. 48" - 54" TREE
- 10. 54" - 60" TREE
- 11. 60" - 66" TREE
- 12. 66" - 72" TREE
- 13. 72" - 78" TREE
- 14. 78" - 84" TREE
- 15. 84" - 90" TREE
- 16. 90" - 96" TREE
- 17. 96" - 102" TREE
- 18. 102" - 108" TREE
- 19. 108" - 114" TREE
- 20. 114" - 120" TREE
- 21. 120" - 126" TREE
- 22. 126" - 132" TREE
- 23. 132" - 138" TREE
- 24. 138" - 144" TREE
- 25. 144" - 150" TREE
- 26. 150" - 156" TREE
- 27. 156" - 162" TREE
- 28. 162" - 168" TREE
- 29. 168" - 174" TREE
- 30. 174" - 180" TREE
- 31. 180" - 186" TREE
- 32. 186" - 192" TREE
- 33. 192" - 198" TREE
- 34. 198" - 204" TREE
- 35. 204" - 210" TREE
- 36. 210" - 216" TREE
- 37. 216" - 222" TREE
- 38. 222" - 228" TREE
- 39. 228" - 234" TREE
- 40. 234" - 240" TREE
- 41. 240" - 246" TREE
- 42. 246" - 252" TREE
- 43. 252" - 258" TREE
- 44. 258" - 264" TREE
- 45. 264" - 270" TREE
- 46. 270" - 276" TREE
- 47. 276" - 282" TREE
- 48. 282" - 288" TREE
- 49. 288" - 294" TREE
- 50. 294" - 300" TREE
- 51. 300" - 306" TREE
- 52. 306" - 312" TREE
- 53. 312" - 318" TREE
- 54. 318" - 324" TREE
- 55. 324" - 330" TREE
- 56. 330" - 336" TREE
- 57. 336" - 342" TREE
- 58. 342" - 348" TREE
- 59. 348" - 354" TREE
- 60. 354" - 360" TREE
- 61. 360" - 366" TREE
- 62. 366" - 372" TREE
- 63. 372" - 378" TREE
- 64. 378" - 384" TREE
- 65. 384" - 390" TREE
- 66. 390" - 396" TREE
- 67. 396" - 402" TREE
- 68. 402" - 408" TREE
- 69. 408" - 414" TREE
- 70. 414" - 420" TREE
- 71. 420" - 426" TREE
- 72. 426" - 432" TREE
- 73. 432" - 438" TREE
- 74. 438" - 444" TREE
- 75. 444" - 450" TREE
- 76. 450" - 456" TREE
- 77. 456" - 462" TREE
- 78. 462" - 468" TREE
- 79. 468" - 474" TREE
- 80. 474" - 480" TREE
- 81. 480" - 486" TREE
- 82. 486" - 492" TREE
- 83. 492" - 498" TREE
- 84. 498" - 504" TREE
- 85. 504" - 510" TREE
- 86. 510" - 516" TREE
- 87. 516" - 522" TREE
- 88. 522" - 528" TREE
- 89. 528" - 534" TREE
- 90. 534" - 540" TREE
- 91. 540" - 546" TREE
- 92. 546" - 552" TREE
- 93. 552" - 558" TREE
- 94. 558" - 564" TREE
- 95. 564" - 570" TREE
- 96. 570" - 576" TREE
- 97. 576" - 582" TREE
- 98. 582" - 588" TREE
- 99. 588" - 594" TREE
- 100. 594" - 600" TREE

NO.	AREA	AREA (SQ. FT.)	TYPE	REMARKS
1	RESTAURANT	1,320	PRE-DEVELOPMENT TOTAL	
2	DRIVE THRU	1,470	DEVELOPMENT - MCDONALD'S	
3	PARKING	602	POST DEVELOPMENT TOTAL	

PARKING INFORMATION  
 PRE-DEVELOPMENT TOTAL 710  
 DEVELOPMENT - MCDONALD'S 1,470  
 POST DEVELOPMENT TOTAL 602

PROPOSED  
**McDonald's RESTAURANT**  
 UNIVERSITY CITY SHOPPING CENTER  
 OLENTANGY RIVER ROAD  
 COLUMBUS, OHIO

**McDonald's**  
 2 EASTON CIRCLE SUITE 200, COLUMBUS, OHIO 43224 614-893-3000

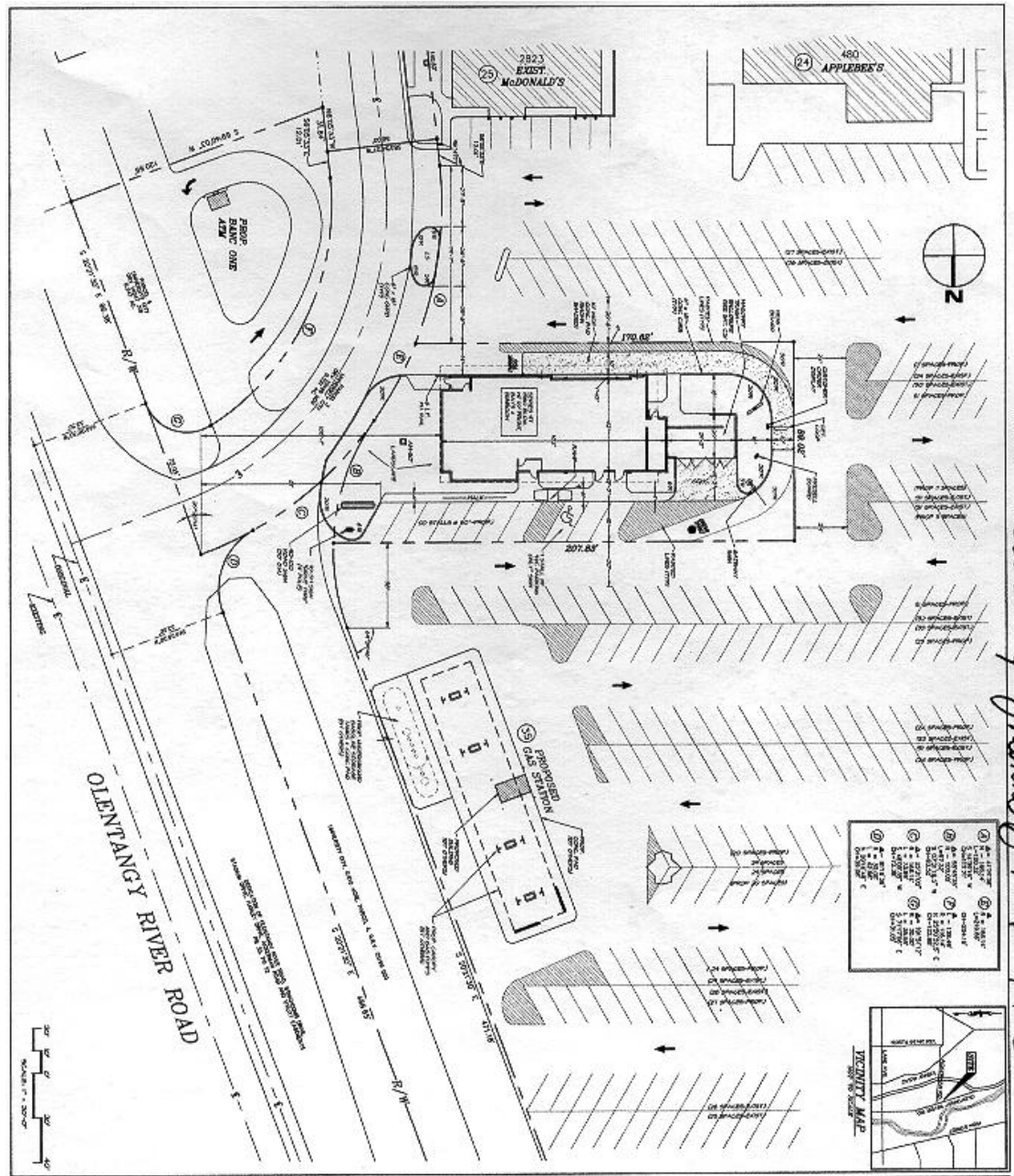
SiteSource Consultants, Inc.  
 15800 Englewood Avenue  
 12th Floor Suite  
 Columbus, Ohio 43240  
 Phone 614-778-8822  
 Fax 614-761-6712  
 Email sitesource@sitesource.com

NO.	REVISED	DATE
A	WORK SHEET	7/20/02
www.cia.com		
project.com		

CIA  
 5115 DIXON

203-002  
 Final Received by: *Monmouth Line* 7/1/03

*Webb*  
 7-1-03



NO.	DATE	DESCRIPTION
1		
2		
3		
4		
5		
6		
7		
8		
9		
10		
11		
12		
13		
14		
15		
16		
17		
18		
19		
20		
21		
22		
23		
24		
25		
26		
27		
28		
29		
30		
31		
32		
33		
34		
35		
36		
37		
38		
39		
40		
41		
42		
43		
44		
45		
46		
47		
48		
49		
50		

**McDonald's**

2 EASTON OVAL, SUITE 200, COLUMBUS, OHIO 43214 (614)445-2000

These Plans and Specifications are the Property of McDonald's Corporation. They shall not be reproduced without McDonald's permission.

Ohio Region

2 EASTON OVAL, SUITE 200, COLUMBUS, OHIO 43214 (614)445-2000

Office Address

2 EASTON OVAL, SUITE 200, COLUMBUS, OHIO 43214 (614)445-2000

City: Columbus, Ohio

County: Franklin

Project No: 02022

Location Code: 34-1533

Scale: 1" = 20'-0"

North Arrow

Legend

Notes

General Notes

1. ALL WORK SHALL BE IN ACCORDANCE WITH THE LATEST EDITIONS OF THE INTERNATIONAL BUILDING CODES AND ALL APPLICABLE LOCAL ORDINANCES.

2. ALL WORK SHALL BE IN ACCORDANCE WITH THE LATEST EDITIONS OF THE INTERNATIONAL MECHANICAL, ELECTRICAL AND PLUMBING (M.E.P.) CODES AND ALL APPLICABLE LOCAL ORDINANCES.

3. ALL WORK SHALL BE IN ACCORDANCE WITH THE LATEST EDITIONS OF THE INTERNATIONAL FIRE AND SAFETY CODES AND ALL APPLICABLE LOCAL ORDINANCES.

4. ALL WORK SHALL BE IN ACCORDANCE WITH THE LATEST EDITIONS OF THE INTERNATIONAL ENERGY CONSERVATION CODES AND ALL APPLICABLE LOCAL ORDINANCES.

5. ALL WORK SHALL BE IN ACCORDANCE WITH THE LATEST EDITIONS OF THE INTERNATIONAL ENVIRONMENTAL DESIGN AND CONSTRUCTION CODES AND ALL APPLICABLE LOCAL ORDINANCES.

6. ALL WORK SHALL BE IN ACCORDANCE WITH THE LATEST EDITIONS OF THE INTERNATIONAL ACCESSIBILITY AND MOBILITY ACTS AND ALL APPLICABLE LOCAL ORDINANCES.

7. ALL WORK SHALL BE IN ACCORDANCE WITH THE LATEST EDITIONS OF THE INTERNATIONAL SAFETY AND HEALTH ACTS AND ALL APPLICABLE LOCAL ORDINANCES.

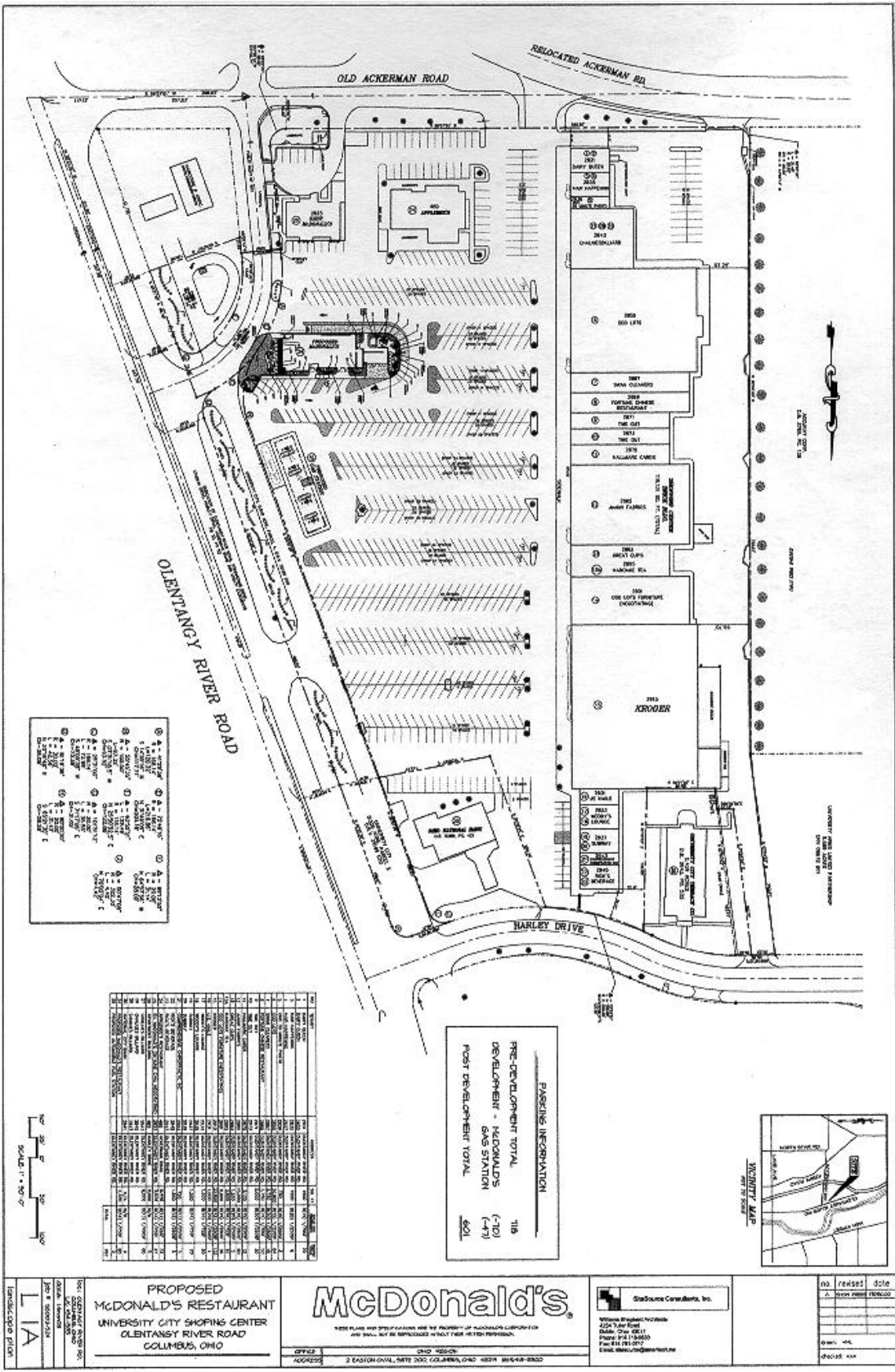
8. ALL WORK SHALL BE IN ACCORDANCE WITH THE LATEST EDITIONS OF THE INTERNATIONAL OCCUPATIONAL SAFETY AND HEALTH ACTS AND ALL APPLICABLE LOCAL ORDINANCES.

9. ALL WORK SHALL BE IN ACCORDANCE WITH THE LATEST EDITIONS OF THE INTERNATIONAL LABOR RELATIONS ACTS AND ALL APPLICABLE LOCAL ORDINANCES.

10. ALL WORK SHALL BE IN ACCORDANCE WITH THE LATEST EDITIONS OF THE INTERNATIONAL TRADE UNION ACTS AND ALL APPLICABLE LOCAL ORDINANCES.

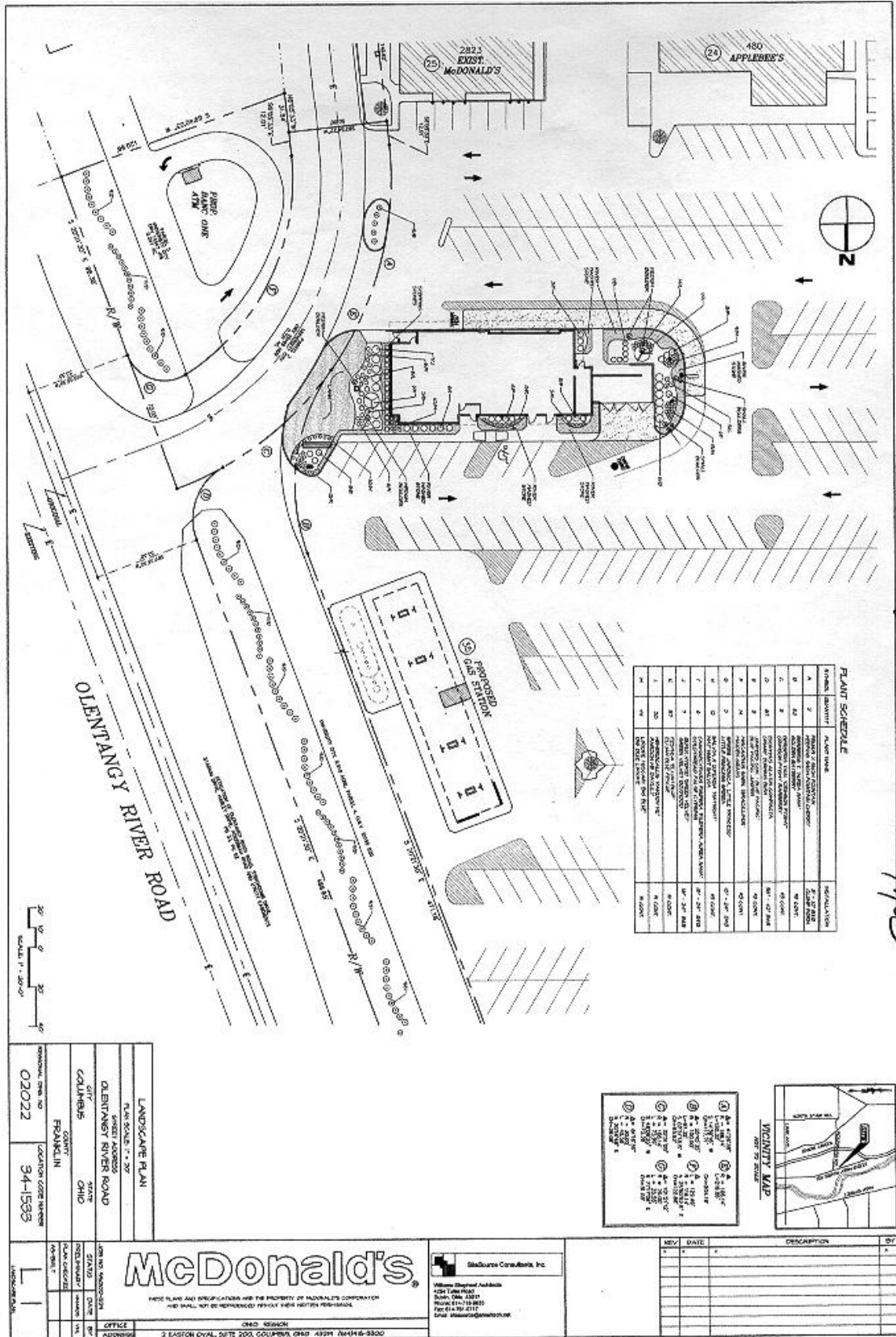
203-002  
 Final Received by: *Manon Fure* 7/1/03

*Richard J. Sinner*  
 7-1-03



203-003  
 Final Received by: *Monmouth* for 7/1/03

*Richard W. Smith*  
 7-1-03



**PLANT SCHEDULE**

ITEM NUMBER	PLANT NAME	QUANTITY
1	Mature Tree (10-12\"/>	



- ① 10' - 12' TREE
- ② 8' - 10' TREE
- ③ 6' - 8' TREE
- ④ 4' - 6' TREE
- ⑤ 2' - 4' TREE
- ⑥ 1' - 2' TREE
- ⑦ 10' - 12' SHRUB
- ⑧ 8' - 10' SHRUB
- ⑨ 6' - 8' SHRUB
- ⑩ 4' - 6' SHRUB
- ⑪ 2' - 4' SHRUB
- ⑫ 1' - 2' SHRUB
- ⑬ 10' - 12' PALM
- ⑭ 8' - 10' PALM
- ⑮ 6' - 8' PALM
- ⑯ 4' - 6' PALM
- ⑰ 2' - 4' PALM
- ⑱ 1' - 2' PALM

**LANDSCAPE PLAN**

PLAN SCALE: 1" = 20'

COLUMBUS COUNTY

02022 34-1533

**McDonald's**

THESE PLANS AND SPECIFICATIONS ARE THE PROPERTY OF MCDONALD'S CORPORATION AND SHALL NOT BE REPRODUCED WITHOUT WRITTEN PERMISSION.

2 EASTON OVAL, SUITE 200, COLUMBUS, OHIO 43204 (614) 6-9800

**Blackburn Consultants, Inc.**

William Stephen Ashlock  
 4000 Tomlinson  
 Dublin, Ohio 43017  
 Phone: 614-737-8855  
 Fax: 614-734-4117  
 Email: wsa@blackburnco.com

REV	DATE	DESCRIPTION