

# Annexation AN15-014

## 10.3 +/- acres in Jefferson Township

### by the City of Columbus



**ANNEXATION OF 10.3± ACRES**  
**FROM: JEFFERSON TOWNSHIP**  
**TO: CITY OF COLUMBUS**  
**FARM LOTS 29 AND 30, QUARTER TOWNSHIP 4, TOWNSHIP 1, RANGE 16**  
**UNITED STATES MILITARY DISTRICT**  
**TOWNSHIP OF JEFFERSON, COUNTY OF FRANKLIN, STATE OF OHIO**

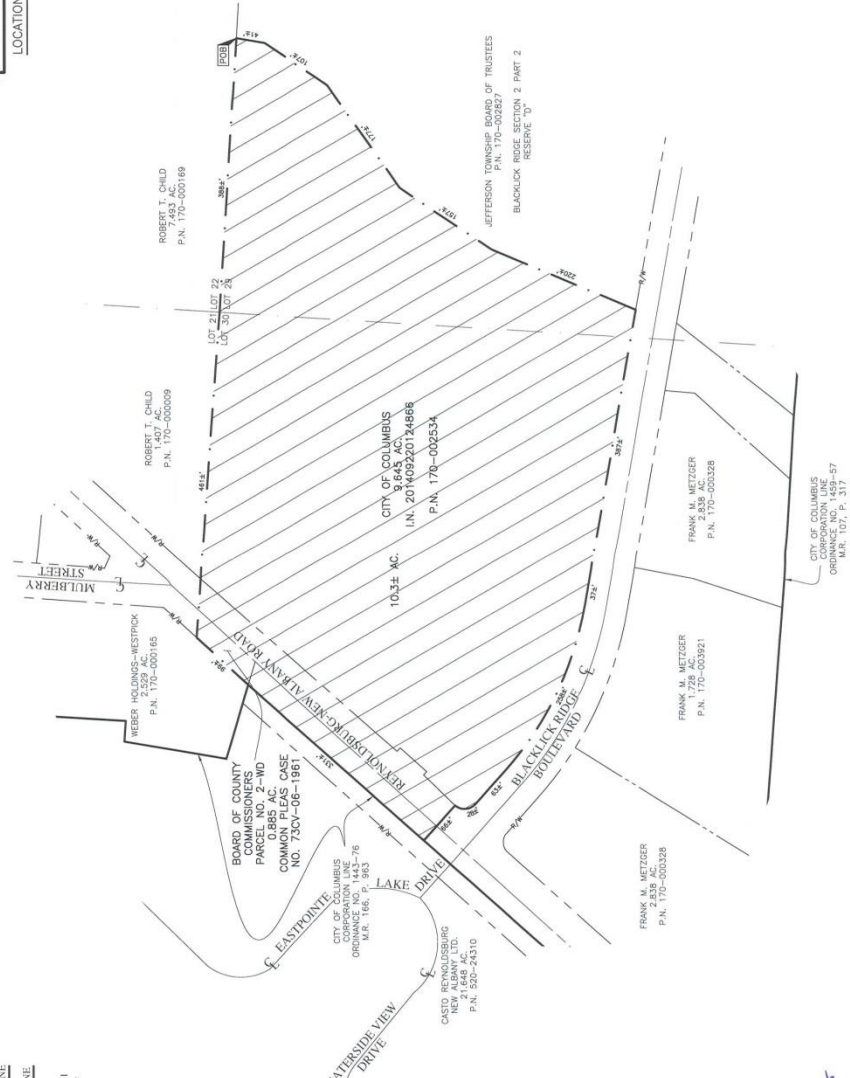
Date: June 9, 2015		
Scale: 1" = 100'		
Job No: 2012-0150		
Sheet: 1 of 1		
EMHT Soils, Mechanical, Remediation & Risk, Inc. Columbus • Cincinnati • Dayton • Springfield Phone: 614.772.6520 Fax: 614.772.6566 www.emht.com		
MARK	DATE	DESCRIPTION

PROPOSED CITY OF COLUMBUS CORPORATION LINE  
 EXISTING CITY OF COLUMBUS CORPORATION LINE

**Contiguity Note:**  
 Total perimeter of annexation is 8,2820 feet, of which 331 feet is contiguous with the City of Columbus by Ordinance Number 1143-76, giving 12% perimeter contiguity.

**Note:**  
 This annexation does not create islands of unincorporated areas within the limits of the area to be annexed.

**Note:**  
 Distances on curves are chord distances.



**RECEIVED**

AUG 04 2015

Franklin County Engineer  
 Dean C. Ringle, P.E., P.S.

ANNEXATION  
 PLAT & DESCRIPTION  
 ACCEPTABLE  
 DEAN C. RINGLE, P.E., P.S.  
 FRANKLIN COUNTY ENGINEER  
 By: *DD* DW-91415

By: *John C. Do Jantz*  
 John C. Do Jantz  
 Professional Surveyor No. 8869  
 Date: 07/31/2015