

Willows Crossing

(Resubdivision of part of
The Willows at Preserve Crossing)

Note A: Reserves A - D, inclusive, are to be owned and maintained by the Willows Crossing Homeowners Association for the purpose of open space.

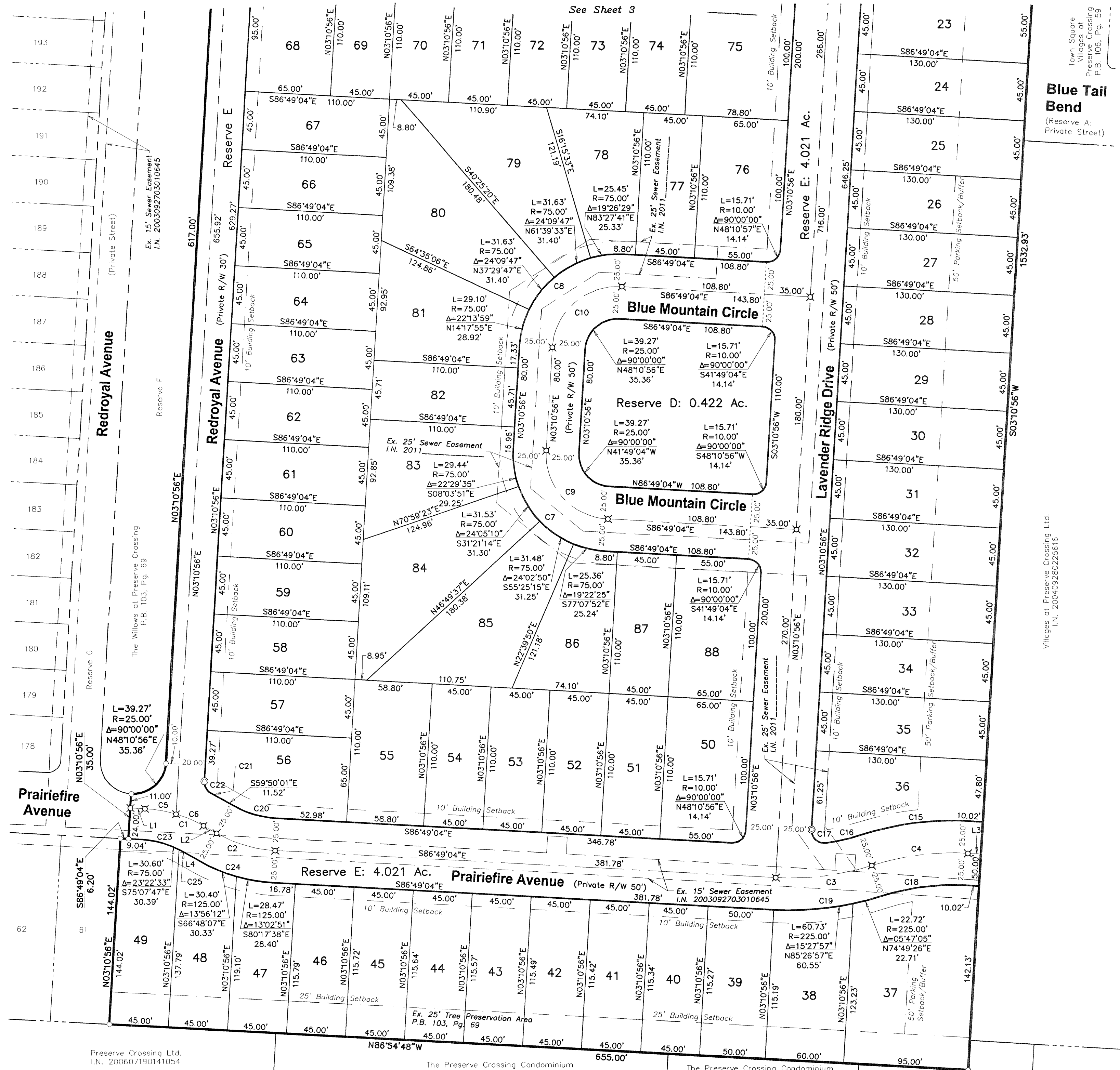
Note B: Reserves E and F are to be owned and maintained by the Willows Crossing Homeowners Association for the purpose of pedestrian and vehicular access. The City of Columbus will not be responsible for the maintenance of these drives.

Note C: By graphic plotting only this property is located in Zone X (areas determined to be outside of the 0.2% annual chance floodplain) by the Federal Emergency Management Agency on Flood Insurance Rate Map, Community Panel Nos. 39049C0203K and 39049C0211K, with an effective date of 06/17/2008, in Franklin County, Ohio.

Note D: The following is located on the subject subdivision; Easement to Columbia Gas of Ohio, Inc. record in I.N. 20040310043388 (along pipeline as installed).

Note E: Storm water control facilities are to be maintained, inspected and reported on in accordance with the Division of Sewerage and Drainage Stormwater Drainage Manual as detailed on the Post Construction Basin Maintenance Schedule as found on the improvement plans. See most recent Storm CC Plans. This should be the responsibility of Willows Crossing Homeowners Association.

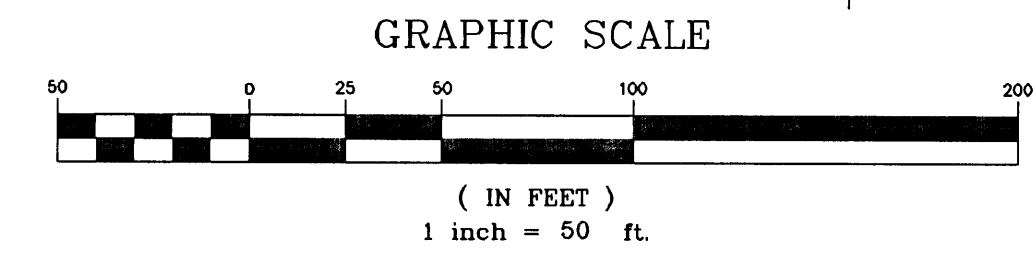
Note F: See recorded Deed for The Willows at Preserve Crossing for all restrictions and maintenance responsibilities to be observed by the Homeowners Association, and the individual owners. See Instrument Number 200403100134561.



No.	RADIUS	DELTA	LENGTH	CHORD	CHORD BEARING
C1	100.00'	26°59'03"	47.10'	46.66'	S73°19'33"E
C2	100.00'	26°59'03"	47.10'	46.66'	S73°19'33"E
C3	200.00'	21°15'02"	74.18'	73.75'	N82°33'25"E
C4	200.00'	21°15'02"	74.18'	73.75'	N82°33'25"E
C5	100.00'	13°52'57"	24.23'	24.17'	S79°52'35"E
C6	100.00'	13°52'57"	24.23'	24.17'	S79°52'35"E
C7	75.00'	90°00'00"	22.87'	22.82'	S66°23'04"E
C8	75.00'	90°00'00"	117.81'	106.07'	N48°10'56"E
C9	50.00'	90°00'00"	78.54'	70.71'	S41°49'04"E
C10	50.00'	90°00'00"	78.54'	70.71'	N48°10'56"E
C11	20.00'	90°00'00"	31.42'	28.28'	N48°10'56"E
C12	50.00'	90°00'00"	78.54'	70.71'	S41°49'04"E
C13	10.00'	90°00'00"	15.71'	14.14'	N48°10'56"E
C14	10.00'	90°00'00"	15.71'	14.14'	S41°49'04"E
C15	225.00'	21°15'02"	83.45'	82.97'	N82°33'25"E
C16	175.00'	09°00'14"	27.50'	27.47'	N76°26'01"E
C17	10.00'	102°14'50"	17.85'	15.57'	S47°56'27"E
C18	175.00'	21°15'02"	64.91'	64.54'	N82°33'25"E
C19	225.00'	21°15'02"	83.45'	82.97'	N82°33'25"E
C20	75.00'	26°59'03"	35.32'	35.00'	S73°19'33"E
C21	125.00'	03°24'33"	7.44'	7.44'	S61°32'17"E
C22	10.00'	66°25'30"	11.59'	10.95'	S30°01'49"E
C23	75.00'	26°59'03"	35.32'	35.00'	S73°19'33"E
C24	125.00'	26°59'03"	58.87'	58.33'	S73°19'33"E
C25	75.00'	03°36'30"	4.72'	4.72'	S61°38'16"E
C26	10.00'	71°16'19"	12.44'	11.65'	S10°58'20"E
C27	5.00'	68°31'07"	5.98'	5.63'	N58°55'22"E

LINE	LENGTH	BEARING
L1	11.01'	S86°49'04"E
L2	11.52'	S59°50'01"E
L3	10.02'	S86°49'04"E
L4	13.72'	S59°50'01"E

Reserve	Area
Lots 1-88	12.011 Ac.
Reserves A-D	2.282 Ac.
Reserves E-F	4.065 Ac.



422 Beecher Road
Gahanna, Ohio 43230
ph 614.428.7750
fax 614.428.7755

Z:\10-0037-128\FPI-resize.dwg Layout3 Jun 30, 2011 4:00:44pm atreydinger

Preserve Crossing Ltd.
I.N. 200607190141054

The Preserve Crossing Condominium
Thirteenth Amendment
C.P.B. 202, Pg. 72

The Preserve Crossing Condominium
Twelfth Amendment
C.P.B. 198, Pg. 65

Preserve Crossing Ltd.
I.N. 200607190141054