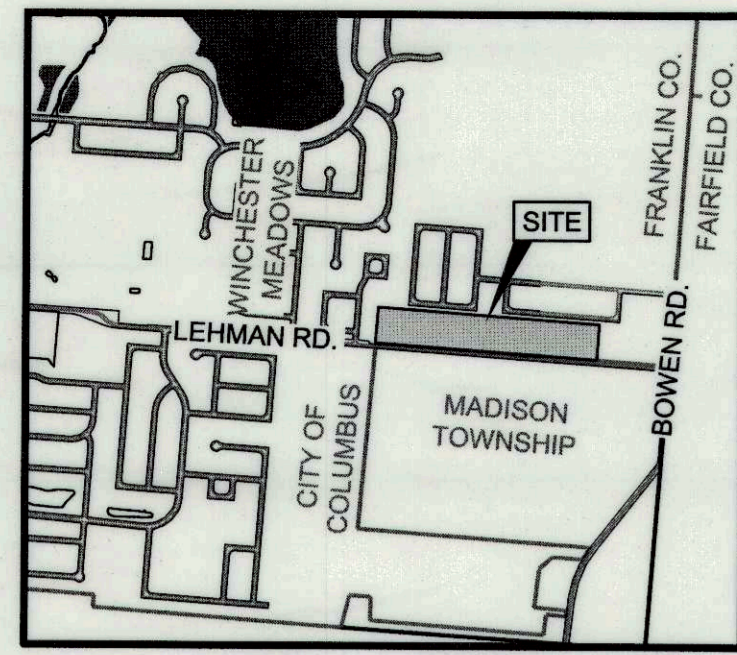
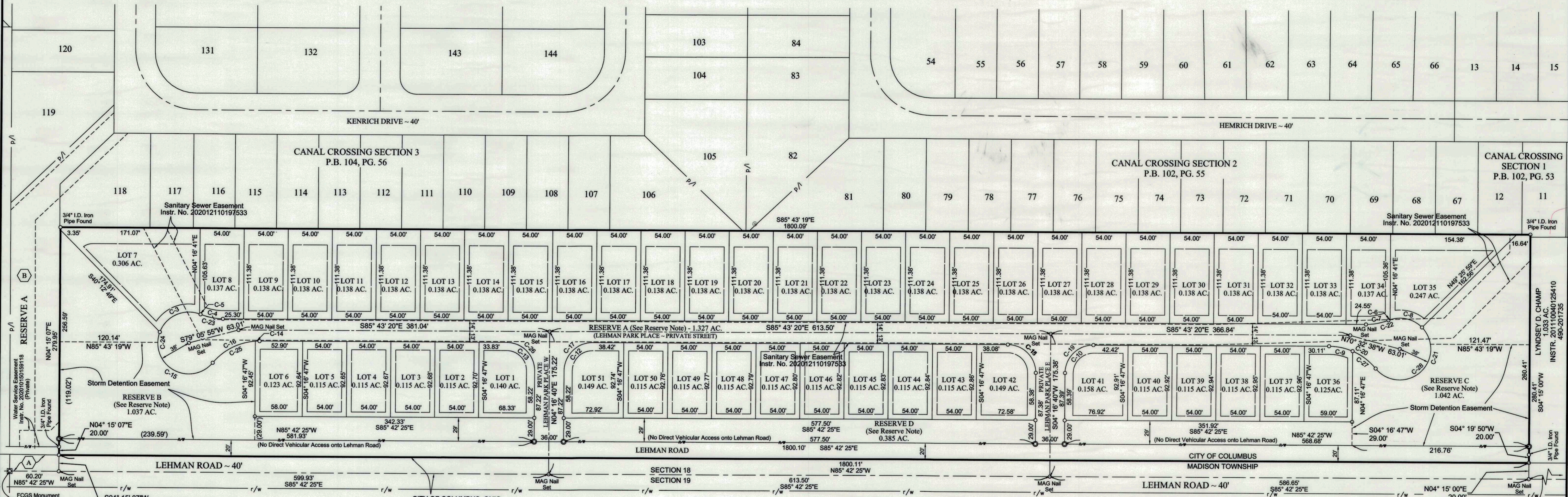
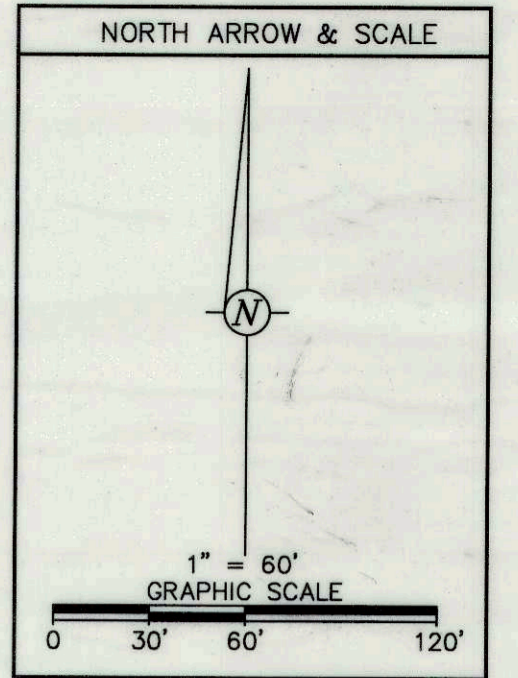


LEHMAN PARK SUBDIVISION

SECTION 18, TOWNSHIP 15 NORTH, RANGE 20 WEST, CONGRESS LANDS
CITY OF COLUMBUS,
FRANKLIN COUNTY, OHIO



LOCATION MAP
NO SCALE



H:\Jobs\2019\071\CADD\Survey\Exhibit\Lehman Park Plat.dwg 03/12/2021

A CITY OF COLUMBUS, OHIO
0.028 AC.
INSTRUMENT NO. 200602080025290

B CANAL HIGHLANDS HOMEOWNERS ASSOCIATION, INC.
RESERVE A
INSTRUMENT NO. 201512290180914
P.N. 490-271819

SET BACKS

- Side Yard Setbacks for All Lots are 6 Feet.
- Setbacks Along Reserve A are 10 Feet.
- Setbacks Along the Rear of Lots 1-6 and 36-51 are 6 Feet.
- Setbacks Along the Rear of Lots 7-35 are 20 Feet.

MONUMENTATION

- 3/4" I.D. Iron Pipe Set, 30" in length, w/Cap Stamped "BIRD & BULL, INC." Unless Otherwise Shown.
- "Permanent Monument" - 1" Solid, 30" in length, set in Concrete

Curve #	Length	Radius	Delta	Chord Direction	Chord Length
C-3	59.29'	38.00'	089° 23' 47"	S69° 23' 07"W	53.46'
C-4	28.14'	74.00'	021° 47' 26"	N74° 49' 37"W	27.97'
C-5	1.32'	38.00'	001° 59' 05"	N64° 55' 27"W	1.32'
C-6	2.11'	38.00'	003° 10' 49"	S74° 04' 39"W	2.11'
C-7	28.14'	74.00'	021° 47' 26"	S83° 22' 57"W	27.97'
C-8	42.37'	38.00'	063° 53' 20"	N72° 23' 16"W	40.21'
C-9	29.68'	74.00'	022° 58' 42"	S74° 13' 59"E	29.48'
C-10	54.19'	34.50'	090° 00' 00"	N49° 16' 40"E	48.79'
C-11	54.19'	34.50'	090° 00' 00"	S40° 43' 20"E	48.79'
C-12	54.19'	34.50'	090° 00' 00"	N49° 16' 40"E	48.79'

Curve #	Length	Radius	Delta	Chord Direction	Chord Length
C-13	54.19'	34.50'	090° 00' 00"	S40° 43' 20"E	48.79'
C-14	5.11'	74.00'	003° 57' 12"	S87° 41' 56"E	5.10'
C-15	106.82'	38.00'	161° 04' 01"	S55° 50' 47"E	74.97'
C-16	60.32'	74.00'	046° 42' 16"	N66° 58' 20"E	58.66'
C-17	54.19'	34.50'	090° 00' 00"	N49° 16' 40"E	48.79'
C-18	54.19'	34.50'	090° 00' 00"	S40° 43' 20"E	48.79'
C-19	51.09'	34.50'	084° 50' 41"	N46° 42' 01"E	46.55'
C-20	65.43'	74.00'	050° 39' 28"	S60° 23' 36"E	63.32'
C-21	167.43'	38.00'	252° 26' 53"	N18° 42' 41"E	61.31'
C-22	28.14'	74.00'	021° 47' 26"	S83° 22' 57"W	27.97'

Curve #	Length	Radius	Delta	Chord Direction	Chord Length
C-23	28.14'	74.00'	021° 47' 26"	N74° 49' 37"W	27.97'
C-24	167.43'	38.00'	252° 26' 53"	S10° 09' 21"E	61.31'
C-25	65.43'	74.00'	050° 39' 28"	N68° 56' 56"E	63.32'
C-26	54.19'	34.50'	090° 00' 00"	S40° 43' 20"E	48.79'
C-27	35.75'	74.00'	027° 40' 46"	S48° 54' 15"E	35.40'
C-28	122.95'	38.00'	185° 22' 44"	N52° 14' 46"E	75.92'

795.01' from FCGS Mon. 9932 Found at the Centerline Intersection of Lehman Road and Bowen Road. At Corner of Sections 17, 18, 19 & 20