

MAP

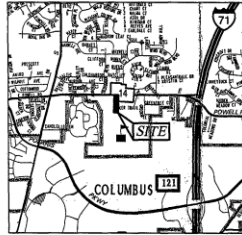
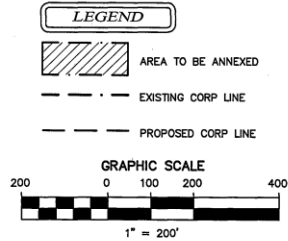
ANNEXATION AN04-023

2.25 Acres in Orange Township

Hector M. and Brenda K. Ramos

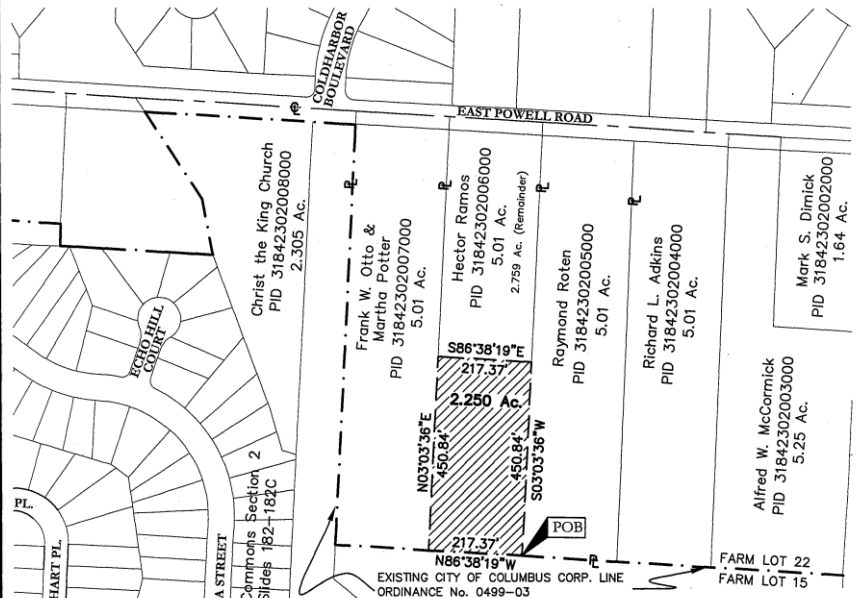
2.250 ACRE ANNEXATION TO THE CITY OF COLUMBUS EXPEDITED II ANNEXATION UNDER ORC §709.021 AND §709.023

LOCATED IN FARM LOT 22, SECTION 4, TOWNSHIP 3, RANGE 18
UNITED STATES MILITARY LANDS
ORANGE TOWNSHIP, DELAWARE COUNTY, OHIO



LENGTH OF CONTIGUITY - 217.37 FEET
TOTAL LENGTH OF PERIMETER - 1336.42 FEET
PERCENTAGE OF CONTIGUITY - 16%
NO ISLANDS OF TOWNSHIP PROPERTY ARE CREATED BY THIS ANNEXATION

All references used in this description can be found at the Delaware County Recorder's Office, Delaware County, Ohio. The Basis of Bearings used in this description was transferred from a GPS survey of Delaware County Monuments "97-036" and "97-146" published by the Delaware County Engineer's Office, and is based upon the NAD83 Ohio State Plane Coordinate System, North Zone, and determines the bearing between said monuments as S 91° 59' 20" W.



Clark E. White
CLARK E. WHITE
P.S. NO. 7868
DATE: 6/22/04

ANNEX No. _____
ORD. No. _____

DRAWN BY: CEW JOB NO.: 03-0003-15
DATE: 6/04/04 CHECKED BY: DRH

ADVANCED
CIVIL DESIGN

4605 MORSE ROAD
SUITE 101
COLUMBUS, OHIO 43230
PH 614-428-7750 FAX 614-428-7755