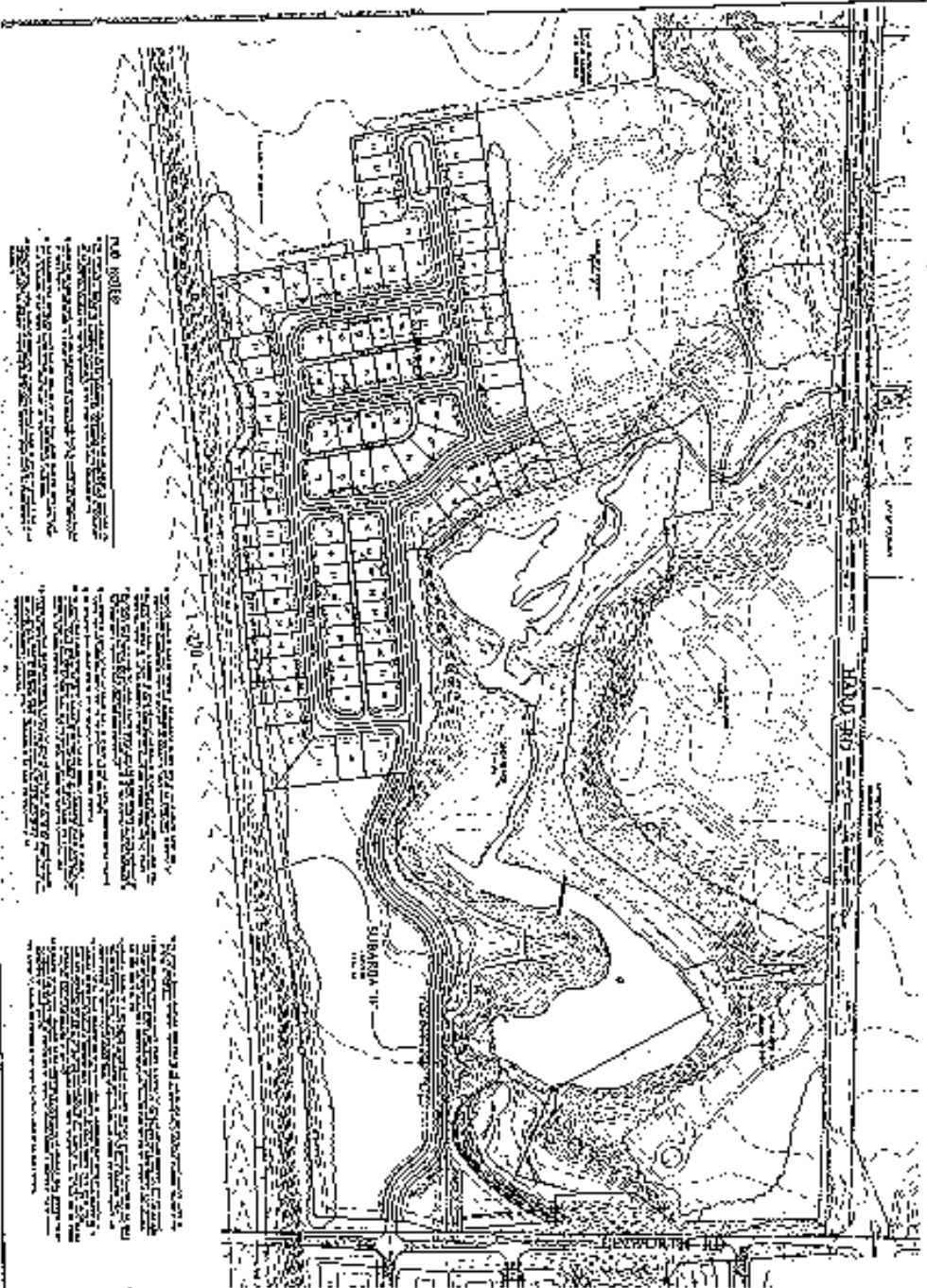


Final Copy Don Bier 1-25-05

Jeffery R. 1/21/05

# THE LAKES OF WORTHINGTON

WORTHINGTON, MINNESOTA  
LAKESIDE COMMUNITY ASSOCIATION, INC.



**NOTES:**

1. THE LAKES OF WORTHINGTON IS A SUBDIVISION OF THE LAKESIDE COMMUNITY ASSOCIATION, INC. (LCA) AND IS SUBJECT TO THE LCA'S BYLAWS AND Covenants, Conditions and Restrictions (CC&R).
2. THE LAKES OF WORTHINGTON IS A SUBDIVISION OF THE LAKESIDE COMMUNITY ASSOCIATION, INC. (LCA) AND IS SUBJECT TO THE LCA'S BYLAWS AND Covenants, Conditions and Restrictions (CC&R).
3. THE LAKES OF WORTHINGTON IS A SUBDIVISION OF THE LAKESIDE COMMUNITY ASSOCIATION, INC. (LCA) AND IS SUBJECT TO THE LCA'S BYLAWS AND Covenants, Conditions and Restrictions (CC&R).
4. THE LAKES OF WORTHINGTON IS A SUBDIVISION OF THE LAKESIDE COMMUNITY ASSOCIATION, INC. (LCA) AND IS SUBJECT TO THE LCA'S BYLAWS AND Covenants, Conditions and Restrictions (CC&R).
5. THE LAKES OF WORTHINGTON IS A SUBDIVISION OF THE LAKESIDE COMMUNITY ASSOCIATION, INC. (LCA) AND IS SUBJECT TO THE LCA'S BYLAWS AND Covenants, Conditions and Restrictions (CC&R).
6. THE LAKES OF WORTHINGTON IS A SUBDIVISION OF THE LAKESIDE COMMUNITY ASSOCIATION, INC. (LCA) AND IS SUBJECT TO THE LCA'S BYLAWS AND Covenants, Conditions and Restrictions (CC&R).
7. THE LAKES OF WORTHINGTON IS A SUBDIVISION OF THE LAKESIDE COMMUNITY ASSOCIATION, INC. (LCA) AND IS SUBJECT TO THE LCA'S BYLAWS AND Covenants, Conditions and Restrictions (CC&R).
8. THE LAKES OF WORTHINGTON IS A SUBDIVISION OF THE LAKESIDE COMMUNITY ASSOCIATION, INC. (LCA) AND IS SUBJECT TO THE LCA'S BYLAWS AND Covenants, Conditions and Restrictions (CC&R).
9. THE LAKES OF WORTHINGTON IS A SUBDIVISION OF THE LAKESIDE COMMUNITY ASSOCIATION, INC. (LCA) AND IS SUBJECT TO THE LCA'S BYLAWS AND Covenants, Conditions and Restrictions (CC&R).
10. THE LAKES OF WORTHINGTON IS A SUBDIVISION OF THE LAKESIDE COMMUNITY ASSOCIATION, INC. (LCA) AND IS SUBJECT TO THE LCA'S BYLAWS AND Covenants, Conditions and Restrictions (CC&R).

**NOTES:**

1. THE LAKES OF WORTHINGTON IS A SUBDIVISION OF THE LAKESIDE COMMUNITY ASSOCIATION, INC. (LCA) AND IS SUBJECT TO THE LCA'S BYLAWS AND Covenants, Conditions and Restrictions (CC&R).
2. THE LAKES OF WORTHINGTON IS A SUBDIVISION OF THE LAKESIDE COMMUNITY ASSOCIATION, INC. (LCA) AND IS SUBJECT TO THE LCA'S BYLAWS AND Covenants, Conditions and Restrictions (CC&R).
3. THE LAKES OF WORTHINGTON IS A SUBDIVISION OF THE LAKESIDE COMMUNITY ASSOCIATION, INC. (LCA) AND IS SUBJECT TO THE LCA'S BYLAWS AND Covenants, Conditions and Restrictions (CC&R).
4. THE LAKES OF WORTHINGTON IS A SUBDIVISION OF THE LAKESIDE COMMUNITY ASSOCIATION, INC. (LCA) AND IS SUBJECT TO THE LCA'S BYLAWS AND Covenants, Conditions and Restrictions (CC&R).
5. THE LAKES OF WORTHINGTON IS A SUBDIVISION OF THE LAKESIDE COMMUNITY ASSOCIATION, INC. (LCA) AND IS SUBJECT TO THE LCA'S BYLAWS AND Covenants, Conditions and Restrictions (CC&R).
6. THE LAKES OF WORTHINGTON IS A SUBDIVISION OF THE LAKESIDE COMMUNITY ASSOCIATION, INC. (LCA) AND IS SUBJECT TO THE LCA'S BYLAWS AND Covenants, Conditions and Restrictions (CC&R).
7. THE LAKES OF WORTHINGTON IS A SUBDIVISION OF THE LAKESIDE COMMUNITY ASSOCIATION, INC. (LCA) AND IS SUBJECT TO THE LCA'S BYLAWS AND Covenants, Conditions and Restrictions (CC&R).
8. THE LAKES OF WORTHINGTON IS A SUBDIVISION OF THE LAKESIDE COMMUNITY ASSOCIATION, INC. (LCA) AND IS SUBJECT TO THE LCA'S BYLAWS AND Covenants, Conditions and Restrictions (CC&R).
9. THE LAKES OF WORTHINGTON IS A SUBDIVISION OF THE LAKESIDE COMMUNITY ASSOCIATION, INC. (LCA) AND IS SUBJECT TO THE LCA'S BYLAWS AND Covenants, Conditions and Restrictions (CC&R).
10. THE LAKES OF WORTHINGTON IS A SUBDIVISION OF THE LAKESIDE COMMUNITY ASSOCIATION, INC. (LCA) AND IS SUBJECT TO THE LCA'S BYLAWS AND Covenants, Conditions and Restrictions (CC&R).

**NOTES:**

1. THE LAKES OF WORTHINGTON IS A SUBDIVISION OF THE LAKESIDE COMMUNITY ASSOCIATION, INC. (LCA) AND IS SUBJECT TO THE LCA'S BYLAWS AND Covenants, Conditions and Restrictions (CC&R).
2. THE LAKES OF WORTHINGTON IS A SUBDIVISION OF THE LAKESIDE COMMUNITY ASSOCIATION, INC. (LCA) AND IS SUBJECT TO THE LCA'S BYLAWS AND Covenants, Conditions and Restrictions (CC&R).
3. THE LAKES OF WORTHINGTON IS A SUBDIVISION OF THE LAKESIDE COMMUNITY ASSOCIATION, INC. (LCA) AND IS SUBJECT TO THE LCA'S BYLAWS AND Covenants, Conditions and Restrictions (CC&R).
4. THE LAKES OF WORTHINGTON IS A SUBDIVISION OF THE LAKESIDE COMMUNITY ASSOCIATION, INC. (LCA) AND IS SUBJECT TO THE LCA'S BYLAWS AND Covenants, Conditions and Restrictions (CC&R).
5. THE LAKES OF WORTHINGTON IS A SUBDIVISION OF THE LAKESIDE COMMUNITY ASSOCIATION, INC. (LCA) AND IS SUBJECT TO THE LCA'S BYLAWS AND Covenants, Conditions and Restrictions (CC&R).
6. THE LAKES OF WORTHINGTON IS A SUBDIVISION OF THE LAKESIDE COMMUNITY ASSOCIATION, INC. (LCA) AND IS SUBJECT TO THE LCA'S BYLAWS AND Covenants, Conditions and Restrictions (CC&R).
7. THE LAKES OF WORTHINGTON IS A SUBDIVISION OF THE LAKESIDE COMMUNITY ASSOCIATION, INC. (LCA) AND IS SUBJECT TO THE LCA'S BYLAWS AND Covenants, Conditions and Restrictions (CC&R).
8. THE LAKES OF WORTHINGTON IS A SUBDIVISION OF THE LAKESIDE COMMUNITY ASSOCIATION, INC. (LCA) AND IS SUBJECT TO THE LCA'S BYLAWS AND Covenants, Conditions and Restrictions (CC&R).
9. THE LAKES OF WORTHINGTON IS A SUBDIVISION OF THE LAKESIDE COMMUNITY ASSOCIATION, INC. (LCA) AND IS SUBJECT TO THE LCA'S BYLAWS AND Covenants, Conditions and Restrictions (CC&R).
10. THE LAKES OF WORTHINGTON IS A SUBDIVISION OF THE LAKESIDE COMMUNITY ASSOCIATION, INC. (LCA) AND IS SUBJECT TO THE LCA'S BYLAWS AND Covenants, Conditions and Restrictions (CC&R).



**LEGEND:**

- 1. LOT
- 2. ROAD
- 3. DRIVE
- 4. ALLEY
- 5. COMMON AREA
- 6. LAKE
- 7. STREAM
- 8. FENCE
- 9. UTILITY
- 10. EASEMENT
- 11. CONCRETE
- 12. ASPHALT
- 13. GRAVEL
- 14. SAND
- 15. CLAY
- 16. SILT
- 17. SANDSTONE
- 18. LIMESTONE
- 19. GRANITE
- 20. GNEISS
- 21. QUARTZITE
- 22. SLATE
- 23. SCHIST
- 24. METAMORPHIC
- 25. IGV
- 26. MAFIC
- 27. FELSIC
- 28. METASANDSTONE
- 29. METASILTSTONE
- 30. METASLATE
- 31. METAGNEISS
- 32. METAGNEISS
- 33. METAGNEISS
- 34. METAGNEISS
- 35. METAGNEISS
- 36. METAGNEISS
- 37. METAGNEISS
- 38. METAGNEISS
- 39. METAGNEISS
- 40. METAGNEISS

**PROPOSED UTILITIES:**

- 1. WATER
- 2. SEWER
- 3. GAS
- 4. ELECTRIC
- 5. TELEPHONE
- 6. CABLE
- 7. FIBER
- 8. RAILROAD
- 9. HIGHWAY
- 10. STATE ROAD
- 11. COUNTY ROAD
- 12. LOCAL ROAD
- 13. ALLEY
- 14. DRIVE
- 15. ROAD
- 16. LOT
- 17. COMMON AREA
- 18. LAKE
- 19. STREAM
- 20. FENCE
- 21. UTILITY
- 22. EASEMENT
- 23. CONCRETE
- 24. ASPHALT
- 25. GRAVEL
- 26. SAND
- 27. CLAY
- 28. SILT
- 29. SANDSTONE
- 30. LIMESTONE
- 31. GRANITE
- 32. GNEISS
- 33. QUARTZITE
- 34. SLATE
- 35. SCHIST
- 36. METAMORPHIC
- 37. IGV
- 38. MAFIC
- 39. FELSIC
- 40. METASANDSTONE
- 41. METASILTSTONE
- 42. METASLATE
- 43. METAGNEISS
- 44. METAGNEISS
- 45. METAGNEISS
- 46. METAGNEISS
- 47. METAGNEISS
- 48. METAGNEISS
- 49. METAGNEISS
- 50. METAGNEISS

Z04-046