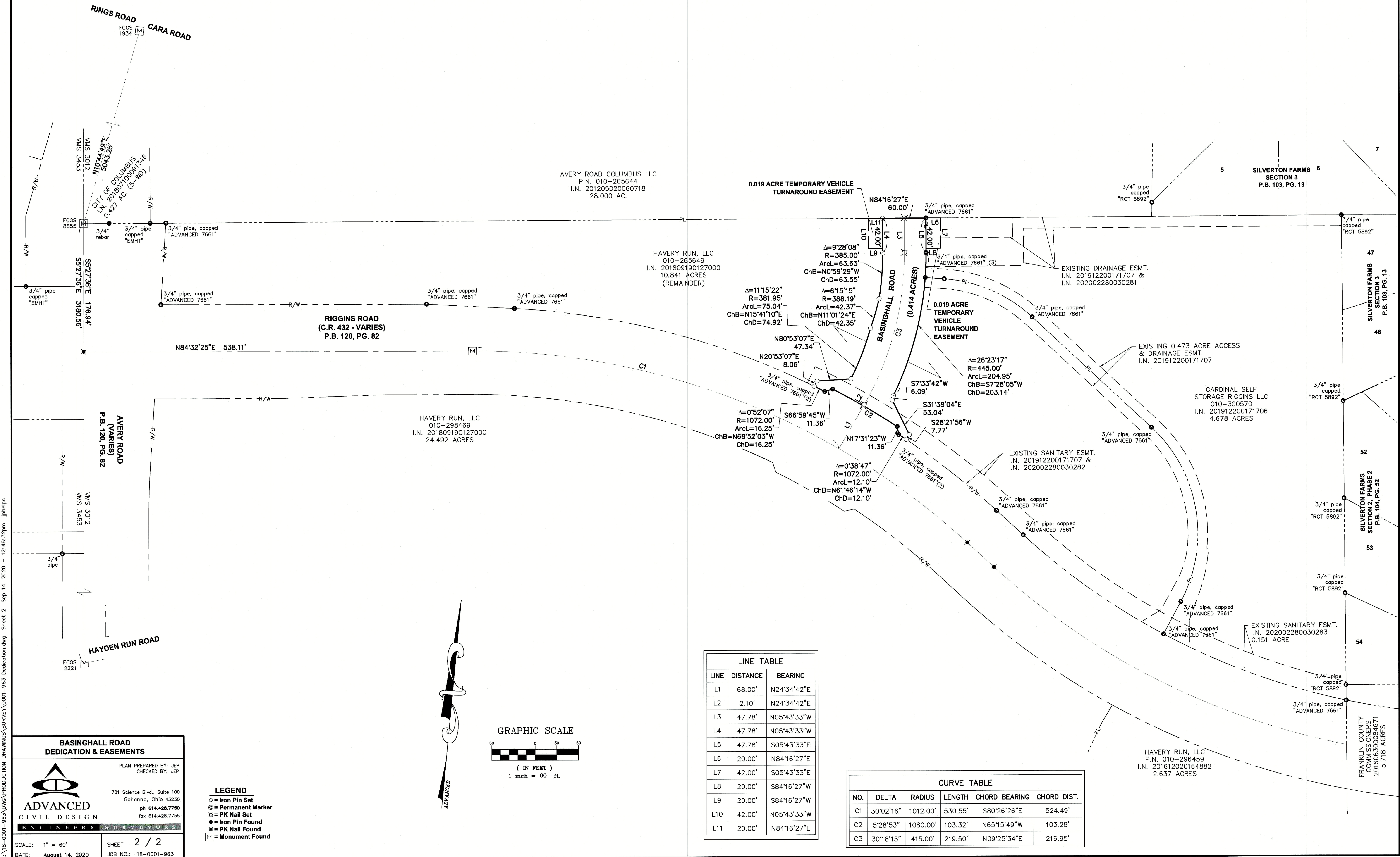


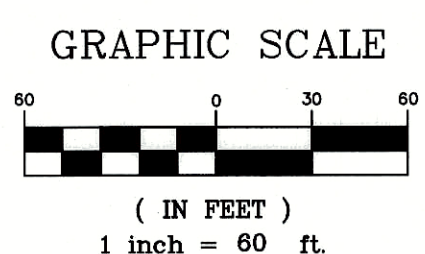
BASINGHALL ROAD DEDICATION

VIRGINIA MILITARY SURVEY NO. 3012
CITY OF COLUMBUS, FRANKLIN COUNTY, OHIO



LINE TABLE		
LINE	DISTANCE	BEARING
L1	68.00'	N24°34'42"E
L2	2.10'	N24°34'42"E
L3	47.78'	N05°43'33"W
L4	47.78'	N05°43'33"W
L5	47.78'	S05°43'33"E
L6	20.00'	N84°16'27"E
L7	42.00'	S05°43'33"E
L8	20.00'	S84°16'27"W
L9	20.00'	S84°16'27"W
L10	42.00'	N05°43'33"W
L11	20.00'	N84°16'27"E

CURVE TABLE					
NO.	DELTA	RADIUS	LENGTH	CHORD BEARING	CHORD DIST.
C1	30°02'16"	1012.00'	530.55'	S80°26'26"E	524.49'
C2	5°28'53"	1080.00'	103.32'	N65°15'49"W	103.28'
C3	30°18'15"	415.00'	219.50'	N09°25'34"E	216.95'



BASINGHALL ROAD DEDICATION & EASEMENTS

PLAN PREPARED BY: JEP
CHECKED BY: JEP

ADVANCED CIVIL DESIGN
ENGINEERS SURVEYORS

781 Science Blvd., Suite 100
Gahanna, Ohio 43230
ph 614.428.7750
fax 614.428.7755

SCALE: 1" = 60'
DATE: August 14, 2020

SHEET 2 / 2
JOB NO.: 18-0001-963

- LEGEND**
- = Iron Pin Set
 - ⊙ = Permanent Marker
 - ⊠ = PK Nail Set
 - = Iron Pin Found
 - ⊠ = PK Nail Found
 - Ⓜ = Monument Found



Z:\18-0001-963\DWG\PRODUCTION\DRAWINGS\SURVEY\0001-963 Dedicatoin.dwg Sheet 2 Sep 14, 2020 12:46:32pm jphelps