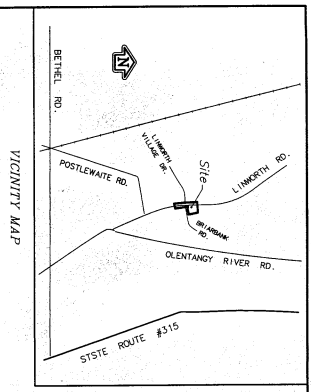


ANNEXATION AN11-002

± .93 Acres in Sharon Township

William H. and Rebecca J. Campbell



RECEIVED

FEB 10 2011

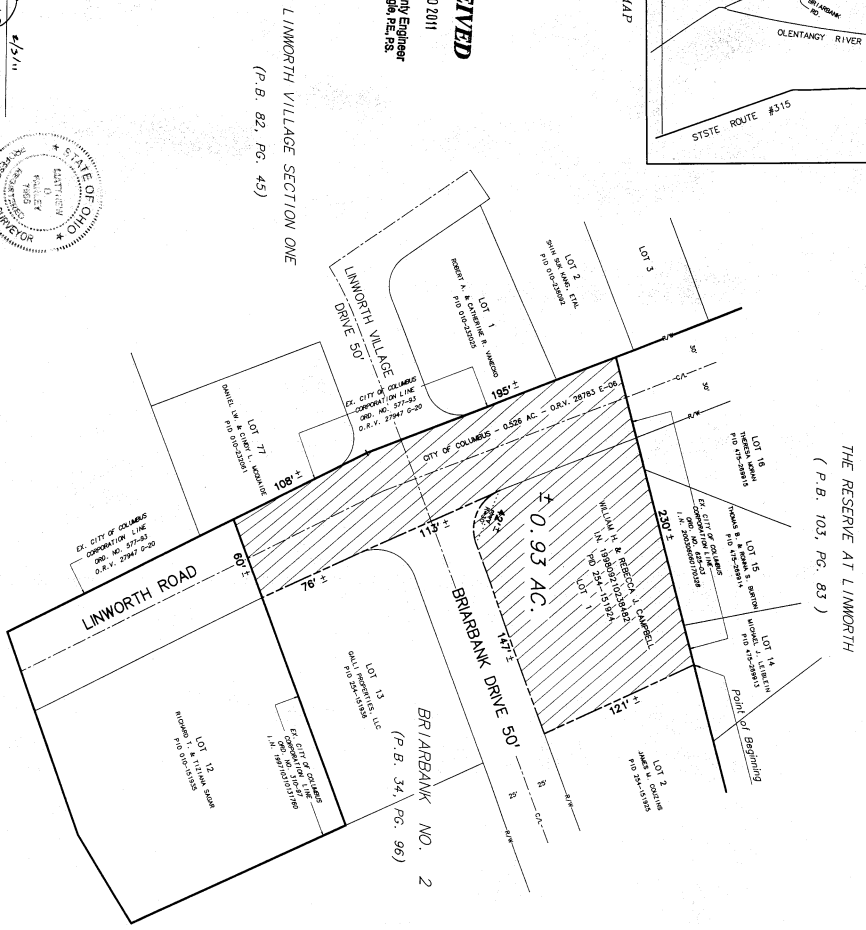
Franklin County Engineer
Darin C. Hughes, P.E., R.S.

BY: *Matthew D. Ferley*
Matthew D. Ferley, Professional Surveyor No. 7566

Myers Surveying
2740 Dahl Main Street Columbus, OH 43221
(614) 235-4877
myers@myerssurveying.com



0.93 ACRE ANNEXATION TO THE CITY OF COLUMBUS
SITUATED IN THE STATE OF OHIO, COUNTY OF FRANKLIN, TOWNSHIP OF SHARON



THE RESERVE AT LINWORTH
(P.B. 103, PG. 83)

BRIARBANK NO. 2
(P.B. 34, PG. 96)

LINWORTH VILLAGE SECTION ONE
(P.B. 82, PG. 45)



Scale 1" = 50'
February 3, 2011

Annexation Plot

AREA TO BE ANNEXED



Existing City of Columbus Corporation Line

Proposed City of Columbus Corporation Line

ANNEXATION
PLAT & DESCRIPTION
ACCEPTABLE FOR RECORD
FRANKLIN COUNTY ENGINEER
By: *DF* Date: 2/10/11

FILE COPY