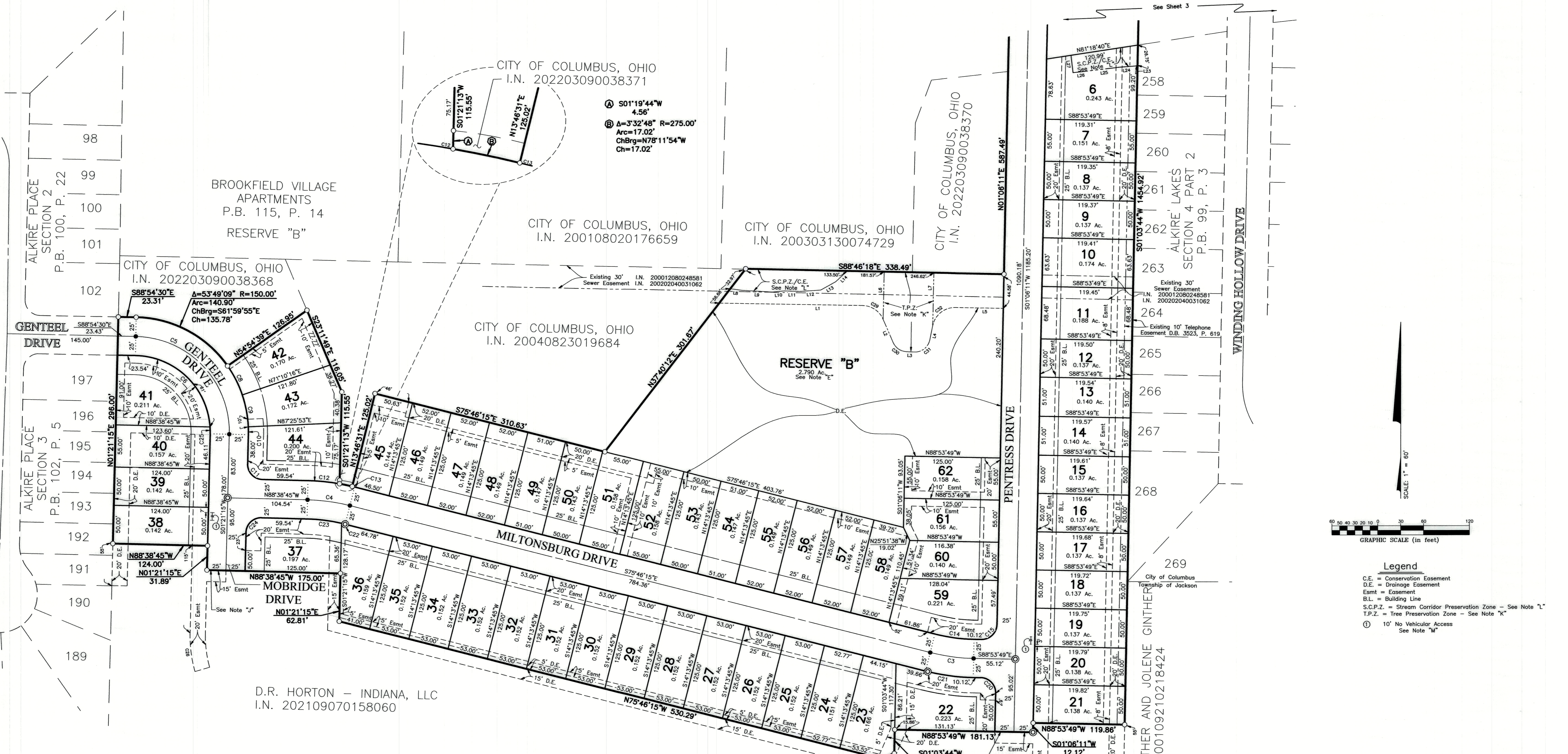
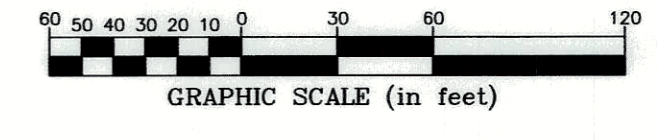


ALLMON RUN SECTION 1



A S01°19'44"W
 4.56'
 B A=3°32'48" R=275.00'
 Arc=17.02'
 ChBrg=N78°11'54"W
 Ch=17.02'



Legend

C.E. = Conservation Easement
 D.E. = Drainage Easement
 Esmt. = Easement
 B.L. = Building Line
 S.C.P.Z. = Stream Corridor Preservation Zone - See Note "L"
 T.P.Z. = Tree Preservation Zone - See Note "K"
 ① 10' No Vehicular Access
 See Note "M"

Line Type Legend

— Existing Property Line
 - - - Existing R/W Line
 - - - Existing R/W Centerline
 - - - Existing Easement Line
 — Subdivision Boundary Line
 — Lot Line
 — R/W Line
 - - - R/W Centerline
 - - - Easement Line

CURVE TABLE				
CURVE NO.	DELTA	RADIUS	LENGTH	CHORD DISTANCE
C1	32°32'43"	150.00'	85.20'	84.06'
C2	14°06'05"	300.00'	73.83'	73.65'
C3	13°07'34"	250.00'	57.27'	57.15'
C4	12°52'30"	250.00'	56.18'	56.06'
C5	9°01'54"	125.00'	196.92'	177.18'
C6	8°50'41"	100.00'	148.63'	135.33'
C8	16°15'37"	150.00'	42.57'	42.43'
C9	16°15'37"	150.00'	42.57'	42.43'
C10	3°55'22"	150.00'	10.27'	10.27'
C11	9°00'00"	20.00'	31.42'	28.28'
C12	8°40'28"	275.00'	41.63'	41.59'
C13	0°39'15"	275.00'	3.14'	3.14'
C14	13°07'34"	225.00'	51.55'	51.43'
C15	9°00'00"	20.00'	31.42'	28.28'
C16	9°06'25"	20.00'	31.45'	28.31'
C17	1°28'16"	275.00'	7.06'	7.06'

CURVE TABLE				
CURVE NO.	DELTA	RADIUS	LENGTH	CHORD DISTANCE
C18	30°34'02"	175.00'	93.36'	92.26'
C19	14°06'05"	275.00'	67.68'	67.51'
C20	9°03'04"	20.00'	31.43'	28.30'
C21	13°07'34"	275.00'	63.00'	62.86'
C22	1°13'04"	225.00'	4.78'	4.78'
C23	11°39'27"	225.00'	45.78'	45.70'
C24	9°00'00"	20.00'	31.42'	28.28'
C25	5°06'04"	100.00'	8.90'	8.90'
C26	17°08'14"	170.00'	50.85'	50.66'
C27	13°20'59"	170.00'	39.61'	39.52'
C29	6°33'59"	30.00'	34.33'	32.49'
C30	6°34'06"	20.00'	22.23'	21.10'
C31	81°28'41"	20.00'	28.44'	26.10'
C32	7°39'33"	29.99'	41.70'	38.42'
C33	16°17'30"	275.00'	78.19'	77.93'

LINE TABLE		
LINE	BEARING	DISTANCE
L1	N89°00'28"W	187.89'
L2	N23°19'44"W	32.81'
L3	N87°00'40"W	10.21'
L4	S11°30'40"W	18.72'
L5	N88°52'41"W	62.49'
L6	N01°13'42"E	62.36'
L7	N01°13'39"E	69.35'
L8	N82°15'47"W	15.46'
L9	S86°44'43"E	39.83'
L10	N84°42'11"E	15.46'
L11	S88°04'21"E	20.50'
L12	N86°08'58"E	27.67'
L13	N61°03'51"E	22.50'
L14	N46°40'16"E	20.56'
L15	S76°34'45"W	13.45'
L16	S60°51'21"W	8.33'
L17	S72°01'22"W	41.77'

LINE TABLE		
LINE	BEARING	DISTANCE
L18	S55°40'28"W	20.26'
L19	S08°47'26"W	17.83'
L20	S09°06'30"E	40.88'
L21	N55°40'28"E	42.68'
L22	N72°01'22"E	38.72'
L23	S76°34'25"W	2.95'
L24	S85°40'08"W	20.71'
L25	S83°08'10"W	41.44'
L26	S83°40'22"W	19.82'
L27	N07°02'50"W	22.85'
L28	N07°01'18"W	27.15'
L29	N83°40'22"E	17.68'
L30	N77°27'37"E	21.02'
L31	N87°26'14"E	34.62'
L32	N85°49'08"E	7.29'
L33	N76°34'25"E	11.83'

I:\2020\10\10\GMA\CASHIERS\PLAT\20201010-VS-PLAT-SEC1.DWG plotted by MASTON, JOHN on 9/13/2022 12:00:38 PM last saved by JMASTON on 9/13/2022 11:11:31 AM
 Date: 20201010-CR-REFR.DWG & 20201010-VS-CORR-SEC1.DWG