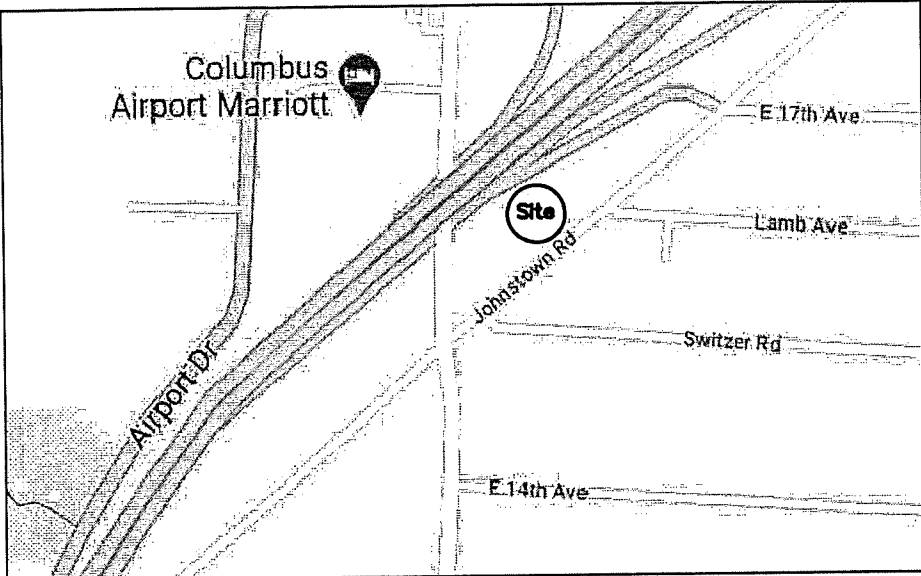
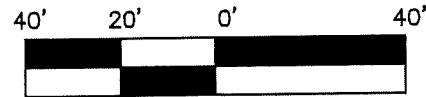


PROPOSED ANNEXATION OF ±0.5 ACRES
FROM: Mifflin Township
TO: City of Columbus



Vicinity Map

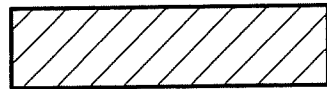
Being ±0.5 Acres, Situated in the State of Ohio, County of Franklin, Township of Mifflin, in Quarter Township 3, Township 1, Range 17, United States Military Lands



Scale: 1" = 40'

November 13, 2020

Area to Be Annexed:



Contiguity Length ± 336'
 Perimeter Length ± 683'
 Contiguity Percentage: 49%

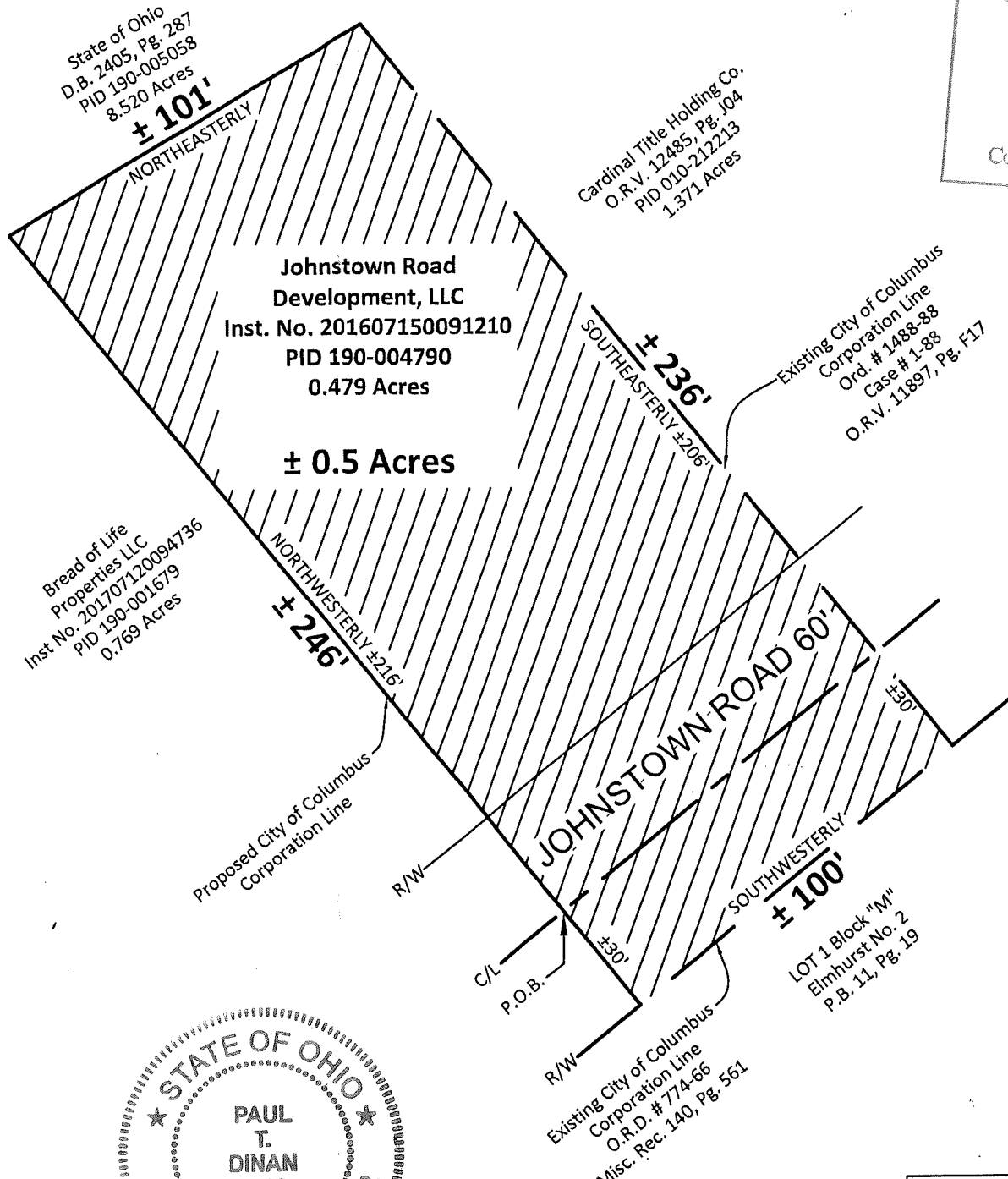
Existing City of Columbus Corp. Line

Proposed City of Columbus Corp. Line

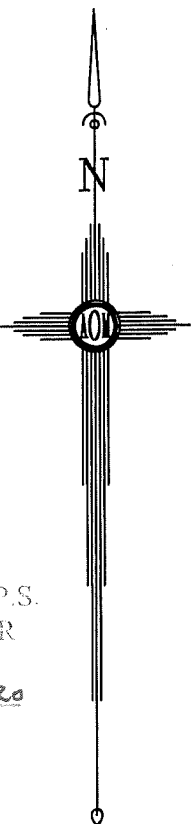
Myers Surveying
 COMPANY

2740 E. Main St., Bexley, Ohio 43209-2577
 (614)235-8677 ~ (614)235-4559 fax
 info@myerssurveying.com

m.o.# 7-11/03/2020 X - T -



RECEIVED
DEC 24 2020
 Franklin County Engineer
 Cornell R. Robertson, P.E., P.S.



ANNEXATION
 PLAT & DESCRIPTION
 ACCEPTABLE
 CORNELL R. ROBERTSON, P.E., P.S.
 FRANKLIN COUNTY ENGINEER
 By PTD Date 12/24/2020



Paul T. Dinan 11-13-2020
 By: Paul T. Dinan, Professional Surveyor No. 7312 Date

