

**SANITARY SEWER EASEMENT VACATION
0.198 ACRE**

Situate in the State of Ohio, County of Franklin, City of Columbus, lying in Quarter Township 3, Township 2, Range 16, United States Military Lands, being part of that 20' Sanitary Sewer Easement of record in Instrument Number 199809100230655, and across a remainder of that 64.327 acre tract conveyed to Hamilton Crossing LLC by deeds of record in Instrument Number 201510300154503 and Instrument Number 201602110017560, (all references refer to the records of the Recorder's Office, Franklin County, Ohio) being more particularly described as follows:

Beginning, for reference, at an angle point in the southeasterly right-of-way line of Hamilton Road, as dedicated by Plat Book 120, Page 64, referenced as Sta. 161+79.28, 155.88' Rt., and being in the northwesterly line of a remainder of said 64.327 acre tract;

Thence with said southeasterly right-of-way line, the northwesterly line of a remainder of said 64.327 acre tract, with the arc of a curve to the left, having a central angle of 08° 22' 35", a radius of 333.00 feet, an arc length of 48.68 feet, a chord bearing of North 80° 56' 48" West and chord distance of 48.64 feet to a point in an easterly line of said Sanitary Sewer Easement;

Thence South 20° 35' 45" West, across said 64.327 acre tract, with said easterly easement line, a distance of 42.70 feet to the TRUE POINT OF BEGINNING;

Thence continuing across said 64.327 acre tract, with the perimeter of said Sanitary Sewer Easement, the following courses and distances:

South 20° 35' 45" West, a distance of 68.65 feet to a point;

South 78° 36' 47" East, a distance of 138.93 feet to a point;

North 87° 12' 08" East, a distance of 151.28 feet to a point; and

South 02° 47' 52" East, a distance of 21.25 feet to a point in the northerly line of that 1.202 acre tract conveyed to Hamilton Crossing LLC by deed of record in Instrument Number 201606140075431;

Thence South 87° 12' 08" West, with the line common to said 64.327 acre and 1.202 acre tracts, across said Sanitary Sewer Easement, a distance of 20.00 feet to a point in a westerly line of said Sanitary Sewer Easement;

Thence across said 64.327 acre tract, with the perimeter of said Sanitary Sewer Easement, the following courses and distances:

North 02° 47' 52" West, a distance of 1.25 feet to a point;

South 87° 12' 08" West, a distance of 133.77 feet to a point;

North 78° 37' 54" West, a distance of 155.27 feet to a point; and

North 56° 53' 45" West, a distance of 73.01 feet to a point;

Thence North 67° 52' 49" East, continuing across said 64.327 acre tract and across said Sanitary Sewer Easement, a distance of 24.38 feet to a point in a northerly line of said Sanitary Sewer Easement;

Thence South 56° 59' 14" East, continuing across said 64.327 acre tract, with the perimeter of said Sanitary Sewer Easement, a distance of 44.88 feet to a point;

Thence North 20° 35' 45" East, continuing across said 64.327 acre tract, with the perimeter of said Sanitary Sewer Easement, a distance of 50.11 feet to a point;

**SANITARY SEWER EASEMENT VACATION
0.198 ACRE**

-2-

Thence North 67° 52' 49" East, continuing across said 64.327 acre tract and across said Sanitary Sewer Easement, a distance of 25.60 feet to a point;

Thence North 88° 55' 19" East, continuing across said 64.327 acre tract and across said Sanitary Sewer Easement, a distance of 1.28 feet to the TRUE POINT OF BEGINNING, containing 0.198 acre, more or less.



EVANS, MECHWART, HAMBLETON & TILTON, INC.

Heather L. King 3/30/17

Heather L. King
Professional Surveyor No. 8307



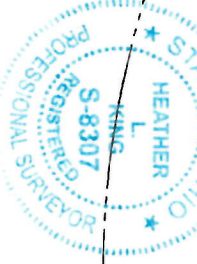
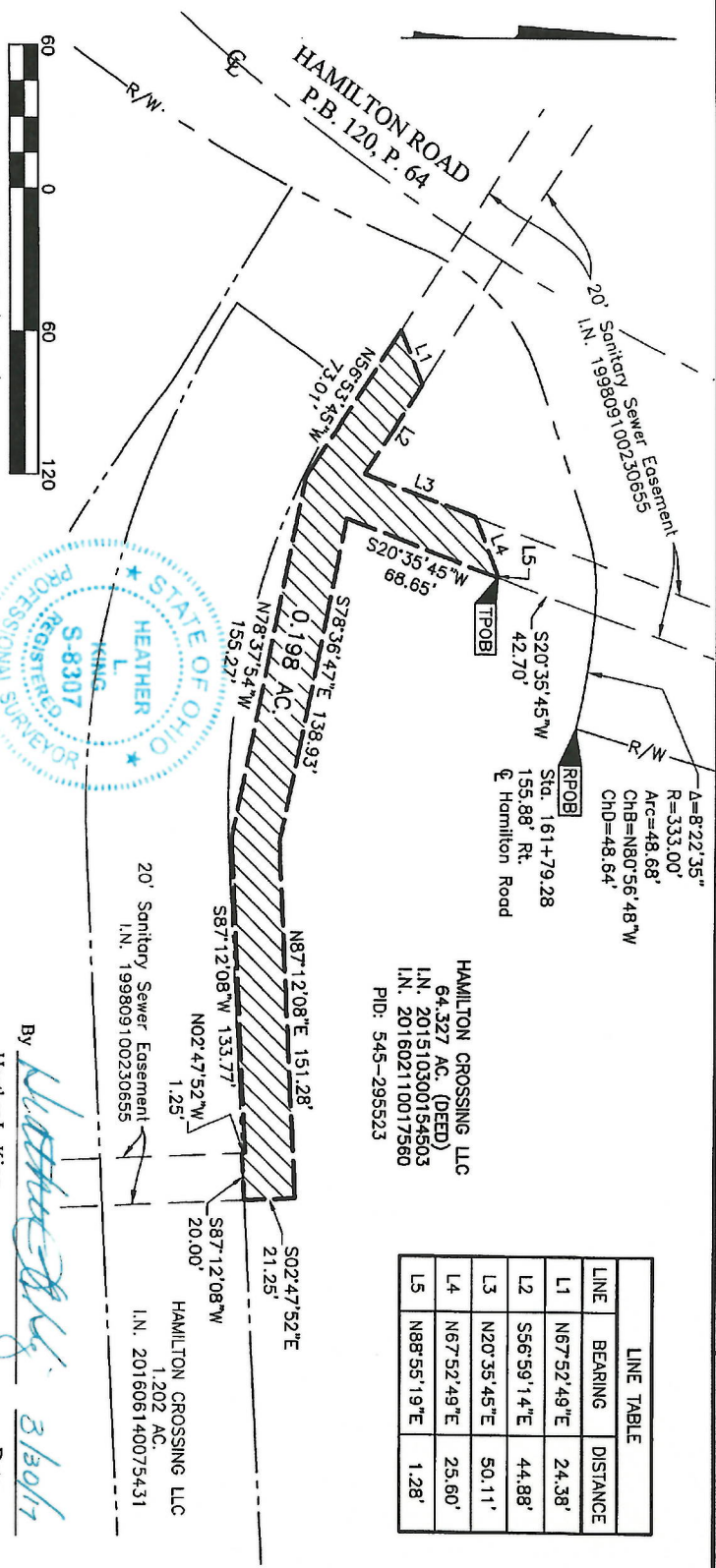
Evans, Machwort, Hamilton & Tison, Inc.
 Engineers • Surveyors • Planners • Scientists
 590 New Albany Road, Columbus, OH 43054
 Phone: 614.775.4500 Toll Free: 888.775.3448
 emht.com

SANITARY SEWER EASEMENT VACATION

QUARTER TOWNSHIP 3, TOWNSHIP 2, RANGE 16
 UNITED STATES MILITARY LANDS
 CITY OF COLUMBUS, COUNTY OF FRANKLIN, STATE OF OHIO

Date: March 29, 2017
 Scale: 1" = 60'
 Job No: 2017-0066

LINE	BEARING	DISTANCE
L1	N67°52'49"E	24.38'
L2	S56°59'14"E	44.88'
L3	N20°35'45"E	50.11'
L4	N67°52'49"E	25.60'
L5	N88°55'19"E	1.28'



By *Heather L. King* 3/30/17
 Heather L. King
 Date

J:\2017\0066.DWG\04SHEETS\EASEMENTS\2017\0066-15-ESM-SSWR-WCOT-01.DWG plotted by KING, HEATHER on 3/30/2017 10:03:59 AM east saved by KING on 3/30/2017 10:03:43 AM Professional Surveyor No. 8307