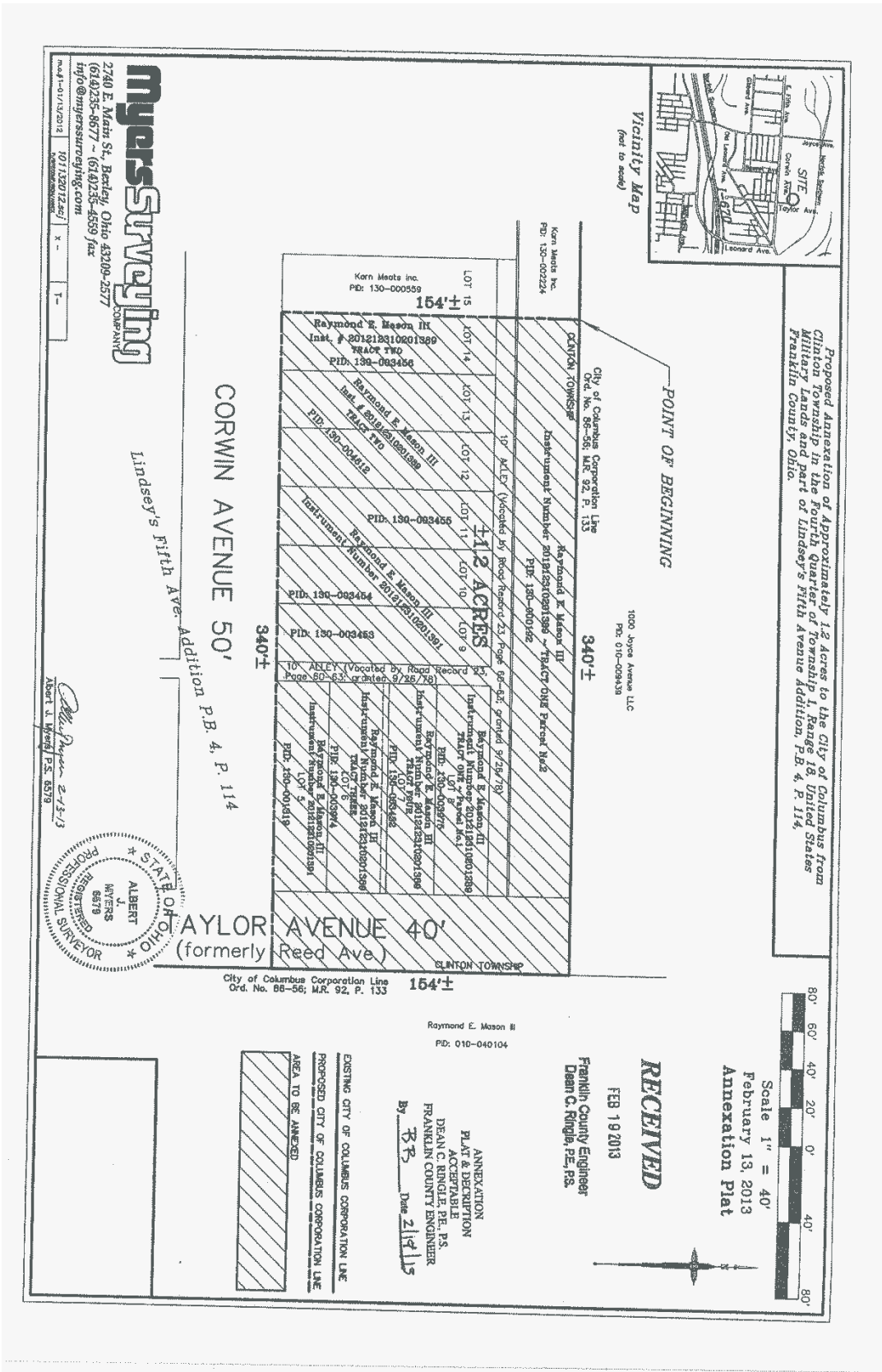


ANNEXATION AN12-020

1.2 acres in Clinton Township

Columbus Truck and Equipment Company



Proposed Annexation of Approximately 1.2 Acres to the City of Columbus from Clinton Township and part of Township I, Range 18, United States Military Lands and part of Lindsey's Fifth Avenue Addition, P.B. 4, P. 114, Franklin County, Ohio.

1000 Lynn Avenue LLC
P.O. 010-009339

340'±

Korn Meats Inc.
PID: 130-000559

1.2 ACRES

LOT 15
Korn Meats Inc.
PID: 130-000559

LOT 14
Raymond E. Mason III
Inst. # 201218310201389
TRACT TWO
PID: 130-003456

LOT 13
Raymond E. Mason III
Inst. # 201218310201389
TRACT TWO
PID: 130-003456

LOT 12
Raymond E. Mason III
Inst. # 201218310201389
TRACT TWO
PID: 130-003456

LOT 11
Raymond E. Mason III
Inst. # 201218310201389
TRACT TWO
PID: 130-003456

LOT 10
Raymond E. Mason III
Inst. # 201218310201389
TRACT TWO
PID: 130-003456

LOT 9
Raymond E. Mason III
Inst. # 201218310201389
TRACT TWO
PID: 130-003456

Myers Surveying
2740 E. Main St., Berkey, Ohio 43209-2577
(614) 235-8677 ~ (614) 235-4559 fax
info@myerssurveying.com

Albert J. Myers, P.S. 6579
PROFESSIONAL SURVEYOR
STATE OF OHIO
RENEWED 2-13-13

EXISTING CITY OF COLUMBUS CORPORATION LINE
PROPOSED CITY OF COLUMBUS CORPORATION LINE
AREA TO BE ANNEXED

RECEIVED
FEB 19 2013
Franklin County Engineer
Dean C. Ringler, P.E., P.S.

ANNEXATION
PLAT & DESCRIPTION
ACCEPTABLE
DEAN C. RINGLER, P.E., P.S.
FRANKLIN COUNTY ENGINEER
By: *DR* Date: 2/19/13

