

# Dedication Plat of Antares Avenue Part 2

ANTARES PARK AT POLARIS LLC  
15.526 ACRES  
D.B. 1061, PG. 2799

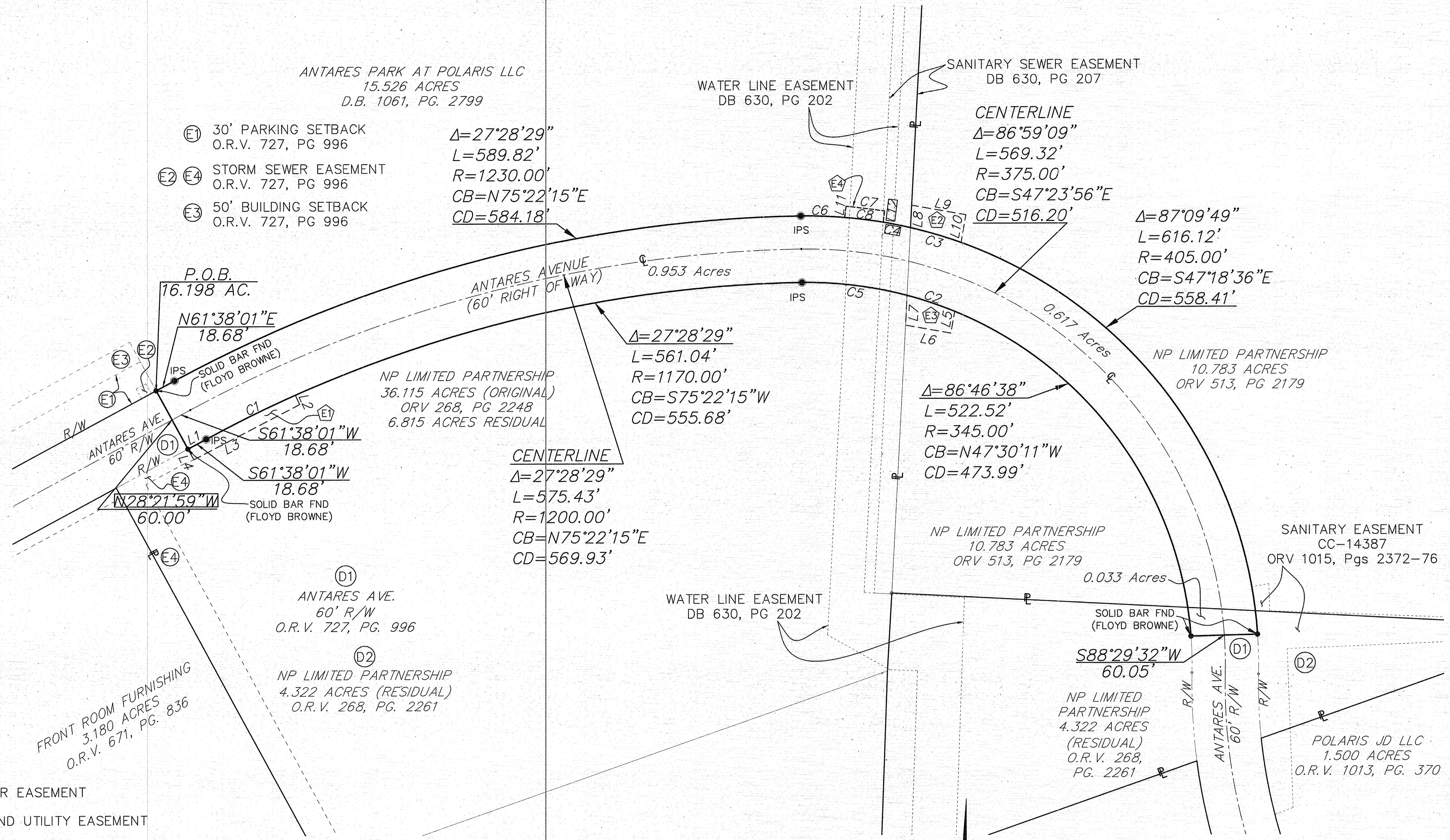
- E1 30' PARKING SETBACK  
O.R.V. 727, PG 996
- E2 E4 STORM SEWER EASEMENT  
O.R.V. 727, PG 996
- E3 50' BUILDING SETBACK  
O.R.V. 727, PG 996

WATER LINE EASEMENT  
DB 630, PG 202

SANITARY SEWER EASEMENT  
DB 630, PG 207

CENTERLINE  
 $\Delta=86^{\circ}59'09''$   
 $L=569.32'$   
 $R=375.00'$   
 $CB=S47^{\circ}23'56''E$   
 $CD=516.20'$

$\Delta=87^{\circ}09'49''$   
 $L=616.12'$   
 $R=405.00'$   
 $CB=S47^{\circ}18'36''E$   
 $CD=558.41'$



CENTERLINE  
 $\Delta=27^{\circ}28'29''$   
 $L=575.43'$   
 $R=1200.00'$   
 $CB=N75^{\circ}22'15''E$   
 $CD=569.93'$

$\Delta=86^{\circ}46'38''$   
 $L=522.52'$   
 $R=345.00'$   
 $CB=N47^{\circ}30'11''W$   
 $CD=473.99'$

NP LIMITED PARTNERSHIP  
10.783 ACRES  
ORV 513, PG 2179

D1  
ANTARES AVE.  
60' R/W  
O.R.V. 727, PG. 996

D2  
NP LIMITED PARTNERSHIP  
4.322 ACRES (RESIDUAL)  
O.R.V. 268, PG. 2261

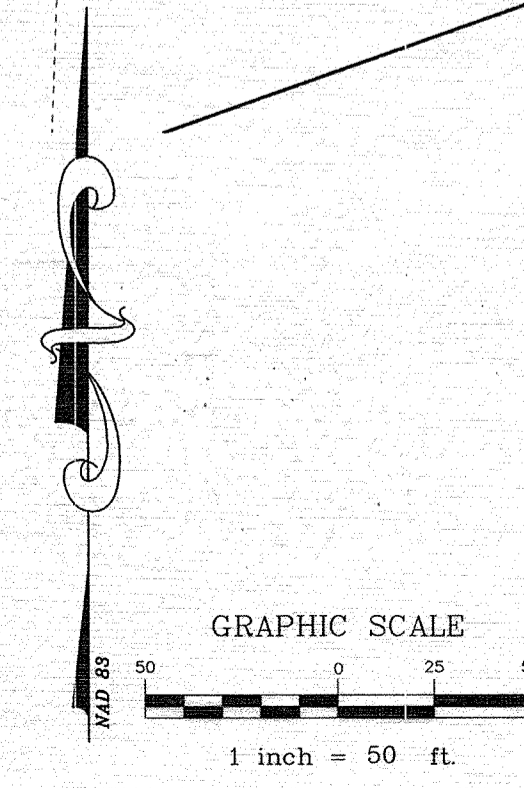
FRONT ROOM FURNISHING  
3.180 ACRES  
O.R.V. 671, PG. 836

- E1 STORM SEWER EASEMENT
- E2 E3 DRAINAGE AND UTILITY EASEMENT
- E4 ACCESS EASEMENT

LINE & CURVE INFORMATION

CURVE TABLE					
CURVE	RADIUS	CHORD BRG	CHORD	DELTA	LENGTH
C1	1170.00'	N 63°49'38" E	89.57'	4°23'14"	89.59'
C2	345.00'	S 71°13'37" E	45.27'	7°31'22"	45.30'
C3	405.00'	S 73°24'46" E	47.45'	6°43'02"	47.48'
C4	405.00'	S 83°49'54" E	99.56'	14°07'13"	99.81'
C5	345.00'	S 82°56'24" E	95.45'	15°54'12"	95.76'
C6	405.00'	N 88°04'59" W	39.69'	5°37'02"	39.71'
C7	1240.00'	N 82°47'52" W	35.00'	1°37'02"	35.00'
C8	405.00'	N 82°47'52" W	35.00'	4°57'11"	35.01'

LINE TABLE		
LINE	BEARING	LENGTH
L1	N 61°38'01" E	18.68'
L2	S 24°28'08" E	9.35'
L3	S 62°34'44" W	107.56'
L4	N 28°21'59" W	10.98'
L5	S 10°04'13" W	20.11'
L6	N 79°55'47" W	41.45'
L7	N 03°06'45" E	27.16'
L8	N 03°06'45" E	20.14'
L9	S 79°55'47" E	49.59'
L10	S 10°04'13" W	25.38'
L11	N07°11'58"E	10.17'
L12	S07°11'58"W	10.17'



See 2925 DR E for Construction Plans

Prepared By:  CONSULTING ENGINEERS & SURVEYORS 83 Shull Avenue Gahanna, Ohio 43230 Ph. (614) 414-7979	RIGHT OF WAY DEDICATION PLAT ANTARES AVENUE	
	ISSUE DATE: 04/21/2012	FILE NAME: Dedication Plat.dwg
	DRAWN BY: RWM	SHEET NO. 2 OF 2
	CHECKED BY:	PROJECT NAME: Antares

S:\ANTARES-CARDING\ENTR\DWG\FINAL\DEDICATION PLAT\FINALS\DEDICATION PLAT\_FINAL.DWG - 0 ACRES - PLOTTED BY: RWF - April 30, 2012 - 1:12 PM