



Evans, Mechwart, Hambleton & Tilton, Inc.
 Engineers • Surveyors • Planners • Scientists
 5500 New Albany Road, Columbus, OH 43054
 Phone: 614.775.4500 Toll Free: 888.775.3648

emht.com

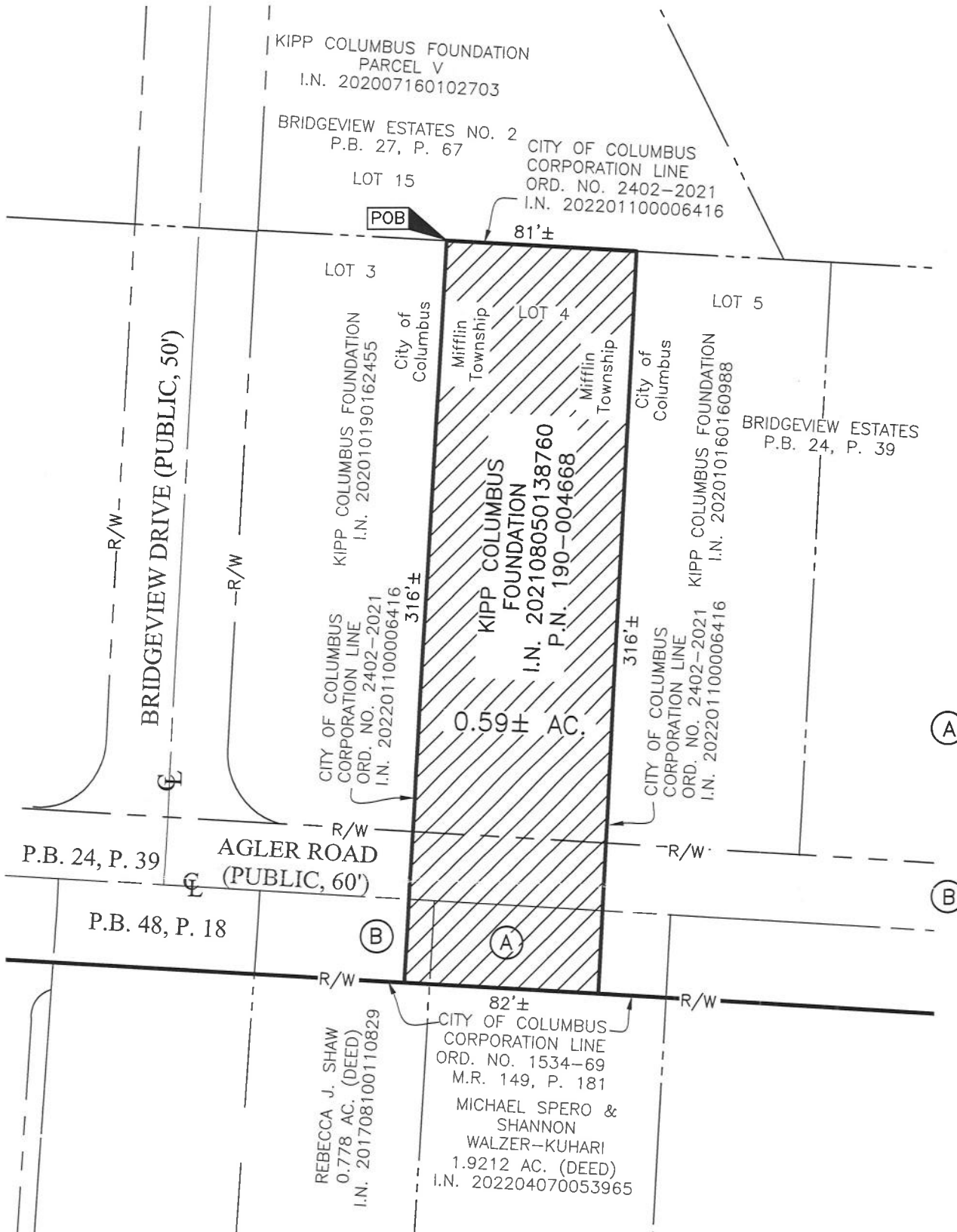
PROPOSED ANNEXATION OF 0.59 ± ACRE FROM MIFFLIN TOWNSHIP TO THE CITY OF COLUMBUS

QUARTER TOWNSHIP 2, TOWNSHIP 1, RANGE 17

UNITED STATES MILITARY DISTRICT

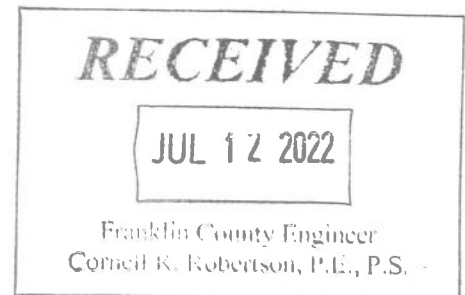
TOWNSHIP OF MIFFLIN, COUNTY OF FRANKLIN, STATE OF OHIO

Date: June 17, 2022 Scale: 1" = 60' Job No: 2020-1263 Sheet No: 1 of 1



FRANKLIN COUNTY
 COMMISSIONERS
 PARCEL 97WD
 0.0788 AC. (DEED)
 O.R. 30452H02

FRANKLIN COUNTY
 COMMISSIONERS
 PARCEL 96WD
 0.0642 AC. (DEED)
 O.R. 30737F14



AREA TO BE ANNEXED
 FROM MIFFLIN TOWNSHIP TO THE CITY OF COLUMBUS



PROPOSED CITY OF COLUMBUS CORPORATION LINE

EXISTING CITY OF COLUMBUS CORPORATION LINE

Contiguity Note:

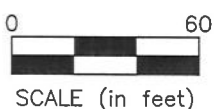
Total perimeter of annexation area is 795 feet, all of which is contiguous with the City of Columbus by Ordinance Number 2402-2021 and Ordinance Number 1534-69, giving 100% perimeter contiguity.

Note:

This annexation does not create islands of unincorporated areas within the limits of the area to be annexed.

ANNEXATION
 PLAT & DESCRIPTION
 ACCEPTABLE
 CORNELL R. ROBERTSON, P.E., P.S.
 FRANKLIN COUNTY ENGINEER

By *[Signature]* Date *07/12/2022*



SCALE (in feet)

By *Matthew A. Kirk* Date *17 June 22*
 Matthew A. Kirk
 Professional Surveyor No. 7865
 mkirk@emht.com

J:\20201263\DWG\04SHEETS\EXHIBITS\20201263-VS-ANNX-02.DWG plotted by KIRK, MATTHEW on 6/17/2022 2:47:18 PM last saved by TDIFROMA on 6/17/2022 1:42:44 PM