

# MAP

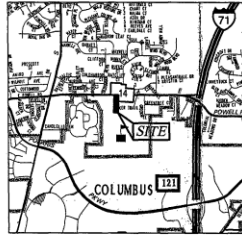
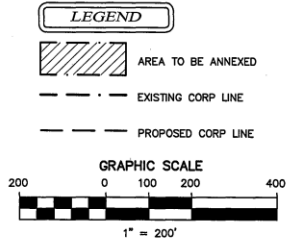
## ANNEXATION AN04-023

### 2.25 Acres in Orange Township

### Hector M. and Brenda K. Ramos

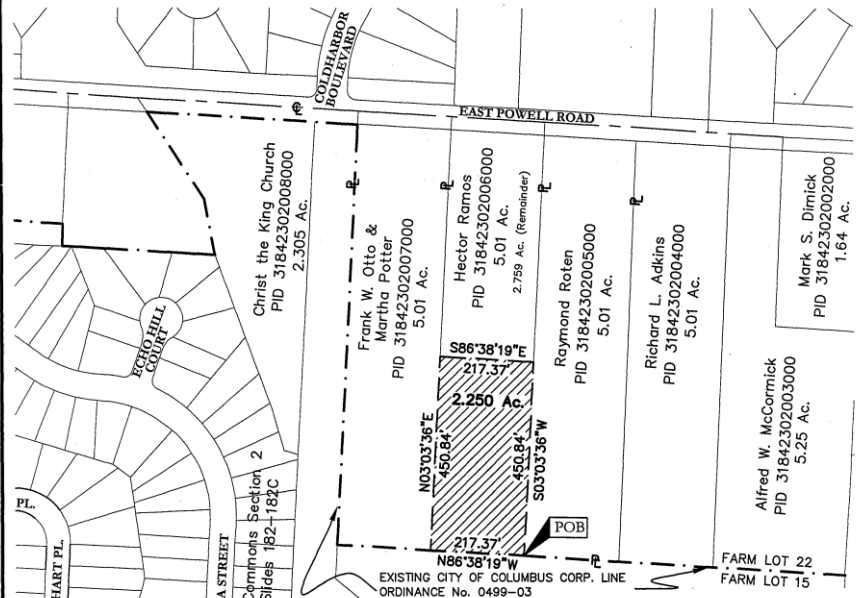
**2.250 ACRE ANNEXATION TO THE CITY OF COLUMBUS**  
**EXPEDITED II ANNEXATION UNDER ORC §709.021 AND §709.023**

LOCATED IN FARM LOT 22, SECTION 4, TOWNSHIP 3, RANGE 18  
 UNITED STATES MILITARY LANDS  
 ORANGE TOWNSHIP, DELAWARE COUNTY, OHIO



LENGTH OF CONTIGUITY - 217.37 FEET  
 TOTAL LENGTH OF PERIMETER - 1336.42 FEET  
 PERCENTAGE OF CONTIGUITY - 16%  
 NO ISLANDS OF TOWNSHIP PROPERTY ARE CREATED BY THIS ANNEXATION

All references used in this description can be found at the Delaware County Recorder's Office, Delaware County, Ohio. The Basis of Bearings used in this description was transferred from a GPS survey of Delaware County Monuments "97-036" and "97-146" published by the Delaware County Engineer's Office, and is based upon the NAD83 Ohio State Plane Coordinate System; North Zone, and determines the bearing between said monuments as S 91° 59' 20" W.



*Clark E. White*  
 CLARK E. WHITE  
 P.S. NO. 7868  
 DATE: 6/22/04

ANNEX No. \_\_\_\_\_  
 ORD. No. \_\_\_\_\_

DRAWN BY: CEW      JOB NO.: 03-0003-15  
 DATE: 6/04/04      CHECKED BY: DRH

**ADVANCED CIVIL DESIGN**

4605 MORSE ROAD  
 SUITE 101  
 COLUMBUS, OHIO 43230  
 PH 614-428-7750 FAX 614-428-7755