

# ANNEXATION AN08-015

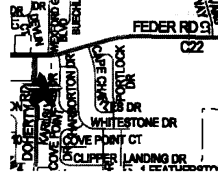
## .83 acres in Prairie Township

### James and Rhoda Long

#### ANNEXATION PLAT OF 0.83 ACRES

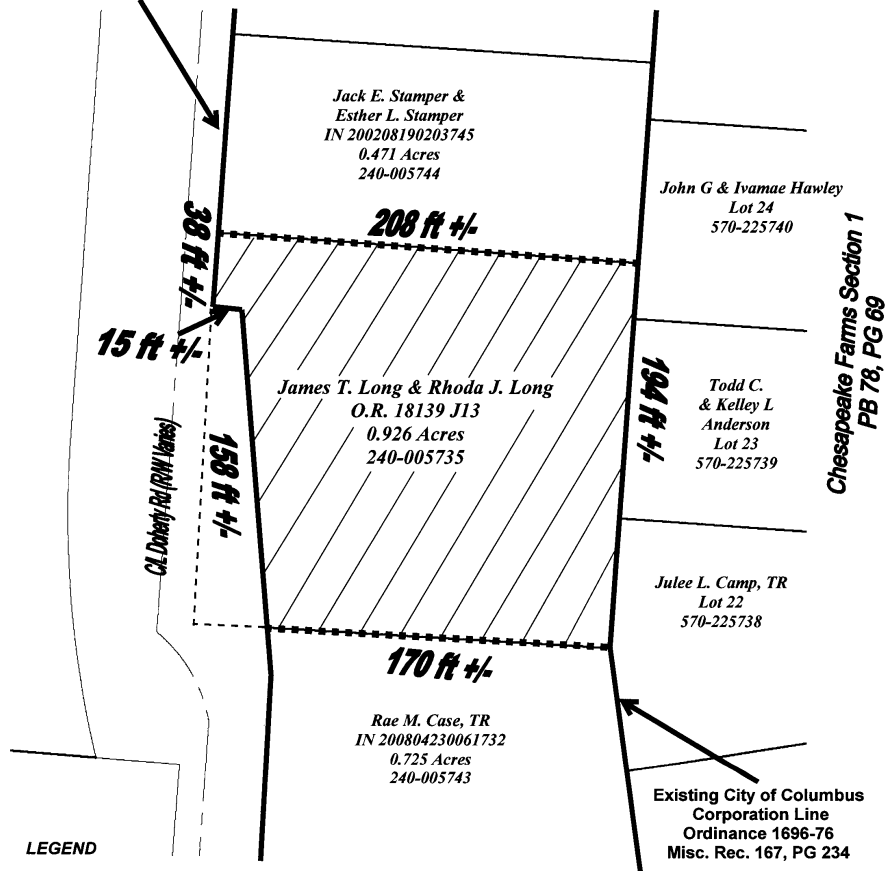
From: Township of Prairie  
To: City of Columbus

Situate in the State of Ohio, County of Franklin, Township of Prairie, being a tract of land lying East of Doherty Road and South of Feder Road, being in the Northwest part of Virginia Military Survey 7326, and being part of a 0.926 acre tract conveyed to James T. Long and Rhoda J. Long of record in Official Record 18139 J13, Franklin County Recorder's Office.,



NORTH  
SCALE: 1" = 60'

Existing City of Columbus  
Corporation Line  
Ordinance 0017-04  
IN 200403110053679



**LEGEND**

————— EXISTING CITY OF COLUMBUS CORPORATION LINE

..... PROPOSED CITY OF COLUMBUS CORPORATION LINE

AREA TO BE ANNEXED

Plat and Legal Description Prepared By:

\_\_\_\_\_  
James T. Long