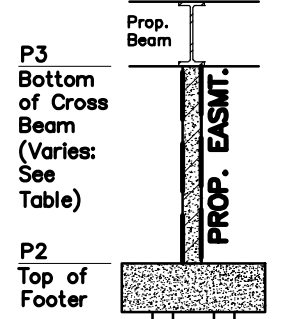


# VERTICAL ENCROACHMENT EASEMENT – COLUMNS & BREEZEWAY

STATE OF OHIO, COUNTY OF FRANKLIN, CITY OF COLUMBUS, AND  
BEING IN SECTION 8, TOWNSHIP 5, RANGE 22, REFUGEE LANDS

**LEGEND**  
 PL Property Line  
 R/W Right-of-Way  
 Encroachment Area

**POC** Point of Commencement  
**POB** True Point of Beginning  
 ○ Iron Pin Found (IPF)  
   Mag Nail Found  
 ● Iron Pin Set  
   Mag Nail Set

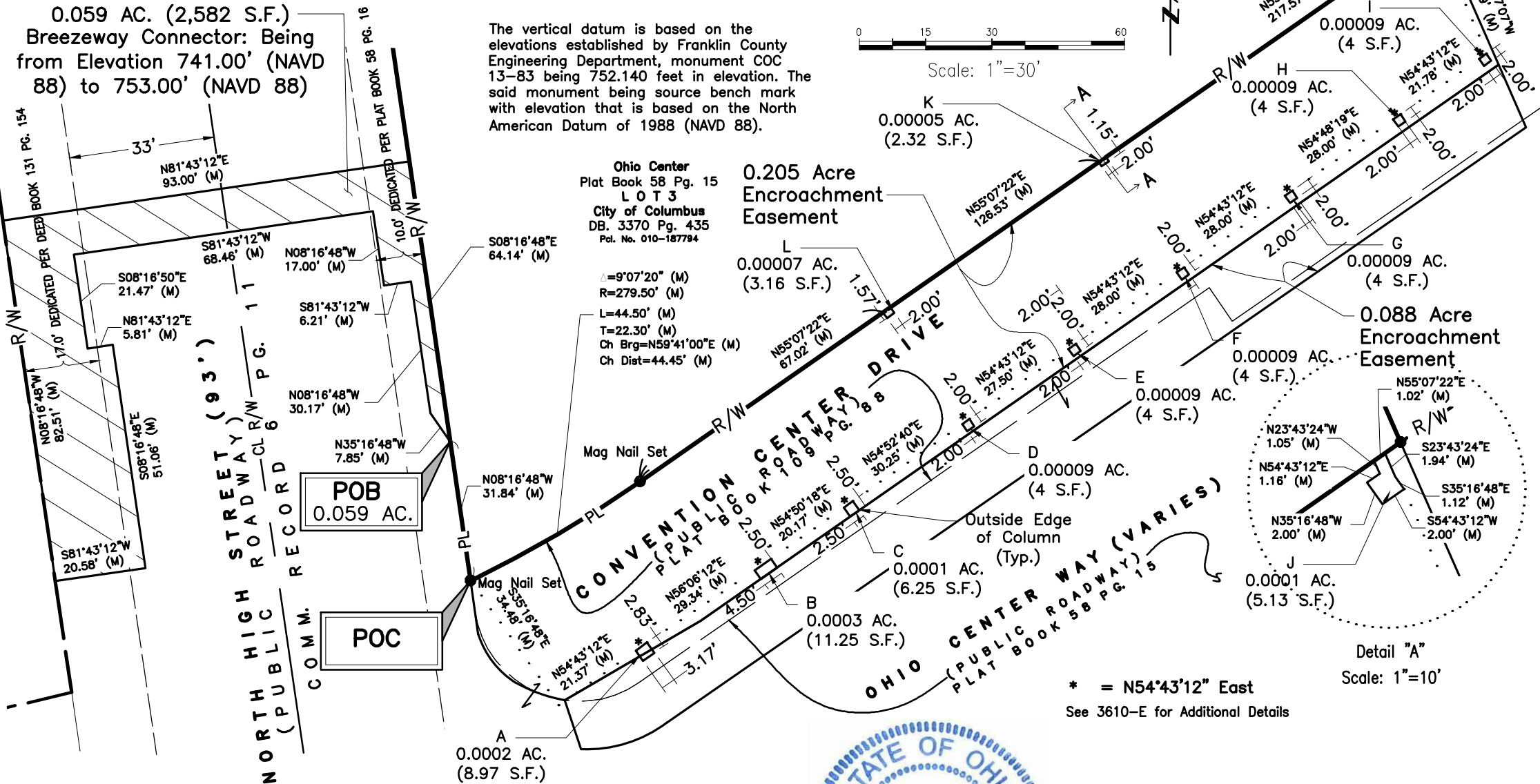
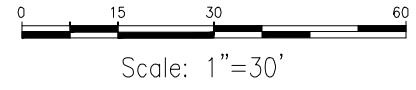


Column Section A-A  
(Typ.) N.T.S.

ELEVATION TABLE		
COLUMN ENCROACHMENT	P2	P3
A	734.50'	755.71'
B	734.50'	755.71'
C	734.50'	755.71'
D	735.50'	755.71'
E	736.50'	755.71'
F	737.00'	756.38'
G	737.50'	756.38'
H	739.00'	757.38'
I	739.00'	759.10'
J	739.50'	759.10'
K	737.00'	756.38'
L	736.00'	755.71'

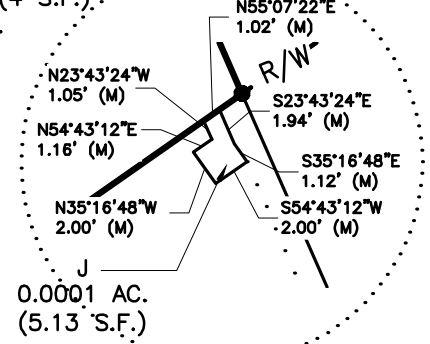
0.059 AC. (2,582 S.F.)  
 Breezeway Connector: Being from Elevation 741.00' (NAVD 88) to 753.00' (NAVD 88)

The vertical datum is based on the elevations established by Franklin County Engineering Department, monument COC 13-83 being 752.140 feet in elevation. The said monument being source bench mark with elevation that is based on the North American Datum of 1988 (NAVD 88).



Ohio Center  
 Plat Book 58 Pg. 15  
 LOT 3  
 City of Columbus  
 DB. 3370 Pg. 435  
 Pl. No. 010-187794

Δ=9°07'20" (M)  
 R=279.50' (M)  
 L=44.50' (M)  
 T=22.30' (M)  
 Ch Brg=N59°41'00"E (M)  
 Ch Dist=44.45' (M)



Detail "A"  
 Scale: 1"=10'

\* = N54°43'12" East  
 See 3610-E for Additional Details

The bearings for this description are based on the Ohio State Plane Coordinate System, South Zone, NAD83 (2011). Vertical elevations shown on this plat are based on NAVD88 (Geoid 12A). Said bearings originated from a field traverse which was referenced to said coordinate system by GPS observations and observations of selected stations in the Ohio Department of Transportation Virtual Reference Station Network. The north line of Convention Center Drive as shown in Columbus Convention Center Drive Dedication Part 2, of record on Plat Book 109, Page 88 having a bearing of South 55°07'22" West is designated the "Basis of Bearing" for this description.

**CONTACT:**  
 880 KING AVENUE  
 COLUMBUS, OHIO 43212  
 (614) 299-2999  
 (614) 299-2992 (Fax)  
 www.EPFERRIS.com

**E. P. FERRIS**  
 AND ASSOCIATES  
 INC.  
 Consulting Civil Engineers and Surveyors



BY: **Matthew Lee Sloat, P.E., P.S.**  
 Registered Surveyor No. 8342

HILTON 2.0 FRANKLIN COUNTY CONVENTION CENTER <b>VERTICAL ENCROACHMENT EASEMENT - COLUMNS &amp; BREEZEWAY</b>	JOB NO. 623.002 DRAWN BY: CK CHECKED BY: MLS APPROVED BY: MLS DATE: 9-30-19
--	---