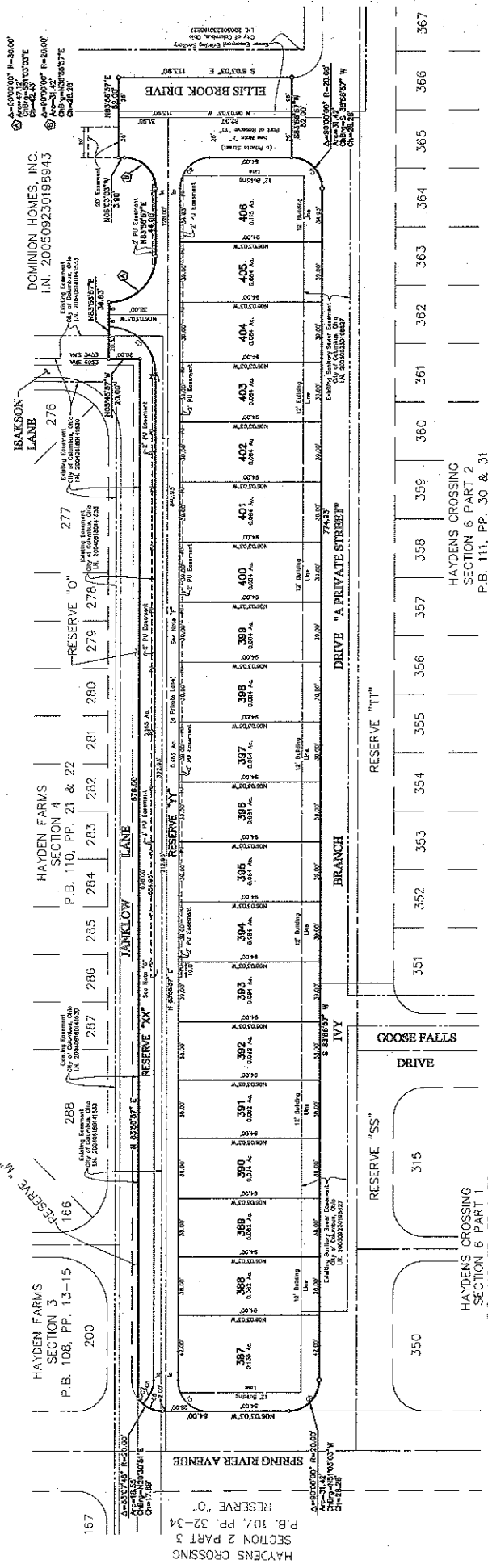




# HAYDENS CROSSING SECTION 6 PART 3



NOTE "A" - AGRICULTURAL RECOMPACTMENT: The purpose of this plat is to recompact the agricultural lands shown on the plat. The City of Columbus will not be responsible for the maintenance of said streets.

NOTE "B" - DEPRESSURE DRIVEWAYS: The government of the City of Columbus will not be responsible for the maintenance of said streets.

NOTE "C" - At the time of platting, all of the land hereby being platted as Haydens Crossing Section 6 Part 3 is in Zone 1. The City of Columbus will not be responsible for the maintenance of said streets.

NOTE "D" - At the time of platting, all of the land hereby being platted as Haydens Crossing Section 6 Part 3 is in Zone 1. The City of Columbus will not be responsible for the maintenance of said streets.

NOTE "E" - At the time of platting, all of the land hereby being platted as Haydens Crossing Section 6 Part 3 is in Zone 1. The City of Columbus will not be responsible for the maintenance of said streets.

NOTE "F" - At the time of platting, all of the land hereby being platted as Haydens Crossing Section 6 Part 3 is in Zone 1. The City of Columbus will not be responsible for the maintenance of said streets.

NOTE "G" - At the time of platting, all of the land hereby being platted as Haydens Crossing Section 6 Part 3 is in Zone 1. The City of Columbus will not be responsible for the maintenance of said streets.

NOTE "H" - At the time of platting, all of the land hereby being platted as Haydens Crossing Section 6 Part 3 is in Zone 1. The City of Columbus will not be responsible for the maintenance of said streets.

NOTE "I" - At the time of platting, all of the land hereby being platted as Haydens Crossing Section 6 Part 3 is in Zone 1. The City of Columbus will not be responsible for the maintenance of said streets.

NOTE "J" - At the time of platting, all of the land hereby being platted as Haydens Crossing Section 6 Part 3 is in Zone 1. The City of Columbus will not be responsible for the maintenance of said streets.

NOTE "K" - At the time of platting, all of the land hereby being platted as Haydens Crossing Section 6 Part 3 is in Zone 1. The City of Columbus will not be responsible for the maintenance of said streets.

NOTE "L" - At the time of platting, all of the land hereby being platted as Haydens Crossing Section 6 Part 3 is in Zone 1. The City of Columbus will not be responsible for the maintenance of said streets.

NOTE "M" - At the time of platting, all of the land hereby being platted as Haydens Crossing Section 6 Part 3 is in Zone 1. The City of Columbus will not be responsible for the maintenance of said streets.

NOTE "N" - At the time of platting, all of the land hereby being platted as Haydens Crossing Section 6 Part 3 is in Zone 1. The City of Columbus will not be responsible for the maintenance of said streets.

NOTE "O" - At the time of platting, all of the land hereby being platted as Haydens Crossing Section 6 Part 3 is in Zone 1. The City of Columbus will not be responsible for the maintenance of said streets.

NOTE "P" - At the time of platting, all of the land hereby being platted as Haydens Crossing Section 6 Part 3 is in Zone 1. The City of Columbus will not be responsible for the maintenance of said streets.

NOTE "Q" - At the time of platting, all of the land hereby being platted as Haydens Crossing Section 6 Part 3 is in Zone 1. The City of Columbus will not be responsible for the maintenance of said streets.

NOTE "R" - At the time of platting, all of the land hereby being platted as Haydens Crossing Section 6 Part 3 is in Zone 1. The City of Columbus will not be responsible for the maintenance of said streets.

NOTE "S" - At the time of platting, all of the land hereby being platted as Haydens Crossing Section 6 Part 3 is in Zone 1. The City of Columbus will not be responsible for the maintenance of said streets.

NOTE "T" - At the time of platting, all of the land hereby being platted as Haydens Crossing Section 6 Part 3 is in Zone 1. The City of Columbus will not be responsible for the maintenance of said streets.

NOTE "U" - At the time of platting, all of the land hereby being platted as Haydens Crossing Section 6 Part 3 is in Zone 1. The City of Columbus will not be responsible for the maintenance of said streets.

NOTE "V" - At the time of platting, all of the land hereby being platted as Haydens Crossing Section 6 Part 3 is in Zone 1. The City of Columbus will not be responsible for the maintenance of said streets.

NOTE "W" - At the time of platting, all of the land hereby being platted as Haydens Crossing Section 6 Part 3 is in Zone 1. The City of Columbus will not be responsible for the maintenance of said streets.

NOTE "X" - At the time of platting, all of the land hereby being platted as Haydens Crossing Section 6 Part 3 is in Zone 1. The City of Columbus will not be responsible for the maintenance of said streets.

NOTE "Y" - At the time of platting, all of the land hereby being platted as Haydens Crossing Section 6 Part 3 is in Zone 1. The City of Columbus will not be responsible for the maintenance of said streets.

NOTE "Z" - At the time of platting, all of the land hereby being platted as Haydens Crossing Section 6 Part 3 is in Zone 1. The City of Columbus will not be responsible for the maintenance of said streets.

NOTE "AA" - At the time of platting, all of the land hereby being platted as Haydens Crossing Section 6 Part 3 is in Zone 1. The City of Columbus will not be responsible for the maintenance of said streets.

NOTE "BB" - At the time of platting, all of the land hereby being platted as Haydens Crossing Section 6 Part 3 is in Zone 1. The City of Columbus will not be responsible for the maintenance of said streets.

NOTE "CC" - At the time of platting, all of the land hereby being platted as Haydens Crossing Section 6 Part 3 is in Zone 1. The City of Columbus will not be responsible for the maintenance of said streets.

NOTE "DD" - At the time of platting, all of the land hereby being platted as Haydens Crossing Section 6 Part 3 is in Zone 1. The City of Columbus will not be responsible for the maintenance of said streets.

NOTE "EE" - At the time of platting, all of the land hereby being platted as Haydens Crossing Section 6 Part 3 is in Zone 1. The City of Columbus will not be responsible for the maintenance of said streets.

NOTE "FF" - At the time of platting, all of the land hereby being platted as Haydens Crossing Section 6 Part 3 is in Zone 1. The City of Columbus will not be responsible for the maintenance of said streets.

NOTE "GG" - At the time of platting, all of the land hereby being platted as Haydens Crossing Section 6 Part 3 is in Zone 1. The City of Columbus will not be responsible for the maintenance of said streets.

NOTE "HH" - At the time of platting, all of the land hereby being platted as Haydens Crossing Section 6 Part 3 is in Zone 1. The City of Columbus will not be responsible for the maintenance of said streets.

NOTE "II" - At the time of platting, all of the land hereby being platted as Haydens Crossing Section 6 Part 3 is in Zone 1. The City of Columbus will not be responsible for the maintenance of said streets.

NOTE "JJ" - At the time of platting, all of the land hereby being platted as Haydens Crossing Section 6 Part 3 is in Zone 1. The City of Columbus will not be responsible for the maintenance of said streets.

Lot	Area (Ac.)	Owner
167	0.014	Reserve
168	0.014	Reserve
169	0.014	Reserve
200	0.014	Reserve
287	0.014	Reserve
288	0.014	Reserve
289	0.014	Reserve
290	0.014	Reserve
291	0.014	Reserve
292	0.014	Reserve
293	0.014	Reserve
294	0.014	Reserve
295	0.014	Reserve
296	0.014	Reserve
297	0.014	Reserve
298	0.014	Reserve
299	0.014	Reserve
300	0.014	Reserve
301	0.014	Reserve
302	0.014	Reserve
303	0.014	Reserve
304	0.014	Reserve
305	0.014	Reserve
306	0.014	Reserve
307	0.014	Reserve
308	0.014	Reserve
309	0.014	Reserve
310	0.014	Reserve
311	0.014	Reserve
312	0.014	Reserve
313	0.014	Reserve
314	0.014	Reserve
315	0.014	Reserve
316	0.014	Reserve
317	0.014	Reserve
318	0.014	Reserve
319	0.014	Reserve
320	0.014	Reserve
321	0.014	Reserve
322	0.014	Reserve
323	0.014	Reserve
324	0.014	Reserve
325	0.014	Reserve
326	0.014	Reserve
327	0.014	Reserve
328	0.014	Reserve
329	0.014	Reserve
330	0.014	Reserve
331	0.014	Reserve
332	0.014	Reserve
333	0.014	Reserve
334	0.014	Reserve
335	0.014	Reserve
336	0.014	Reserve
337	0.014	Reserve
338	0.014	Reserve
339	0.014	Reserve
340	0.014	Reserve
341	0.014	Reserve
342	0.014	Reserve
343	0.014	Reserve
344	0.014	Reserve
345	0.014	Reserve
346	0.014	Reserve
347	0.014	Reserve
348	0.014	Reserve
349	0.014	Reserve
350	0.014	Reserve
351	0.014	Reserve
352	0.014	Reserve
353	0.014	Reserve
354	0.014	Reserve
355	0.014	Reserve
356	0.014	Reserve
357	0.014	Reserve
358	0.014	Reserve
359	0.014	Reserve
360	0.014	Reserve
361	0.014	Reserve
362	0.014	Reserve
363	0.014	Reserve
364	0.014	Reserve
365	0.014	Reserve
366	0.014	Reserve
367	0.014	Reserve