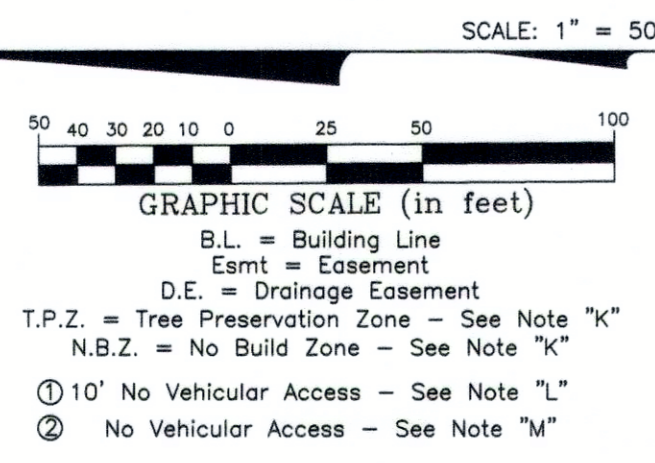
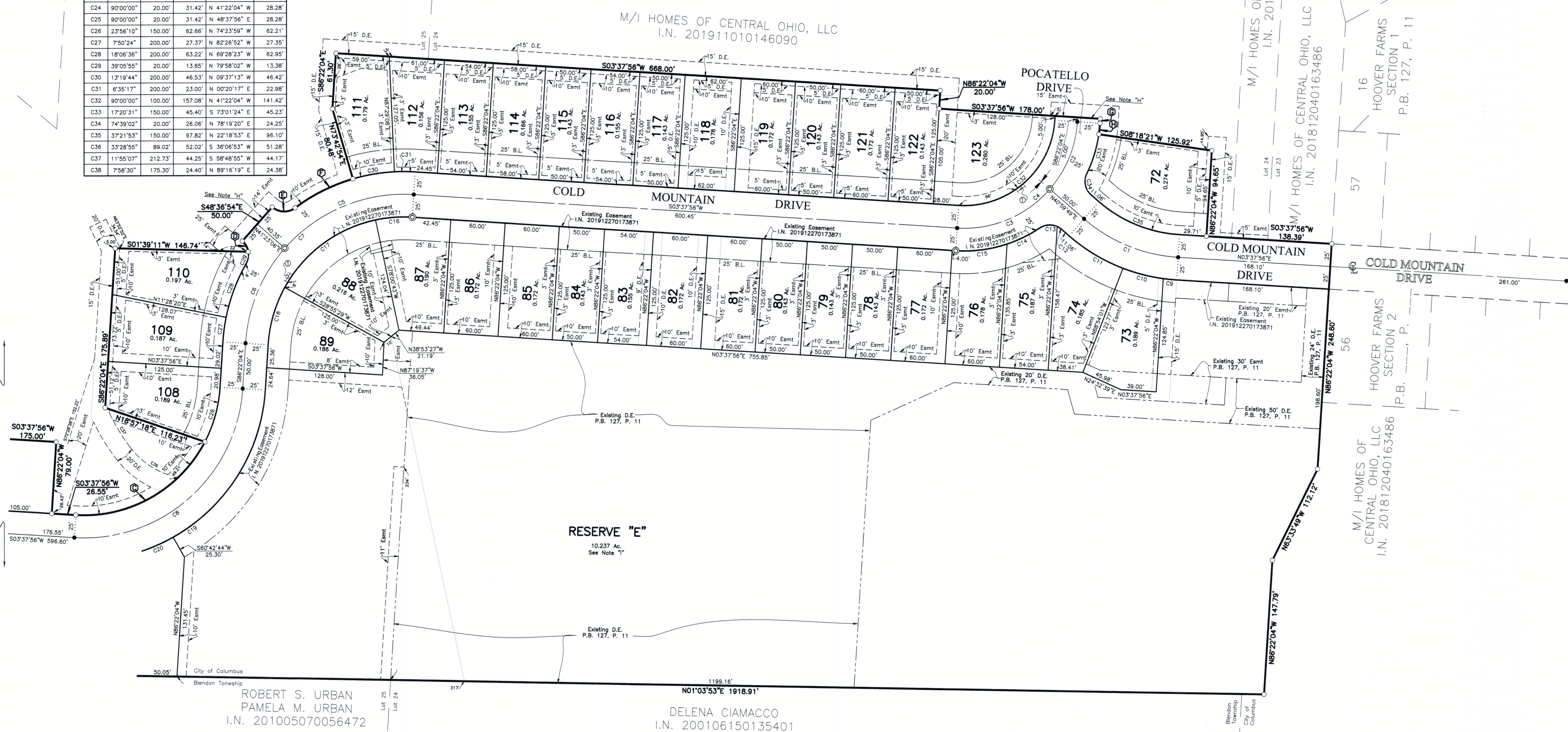
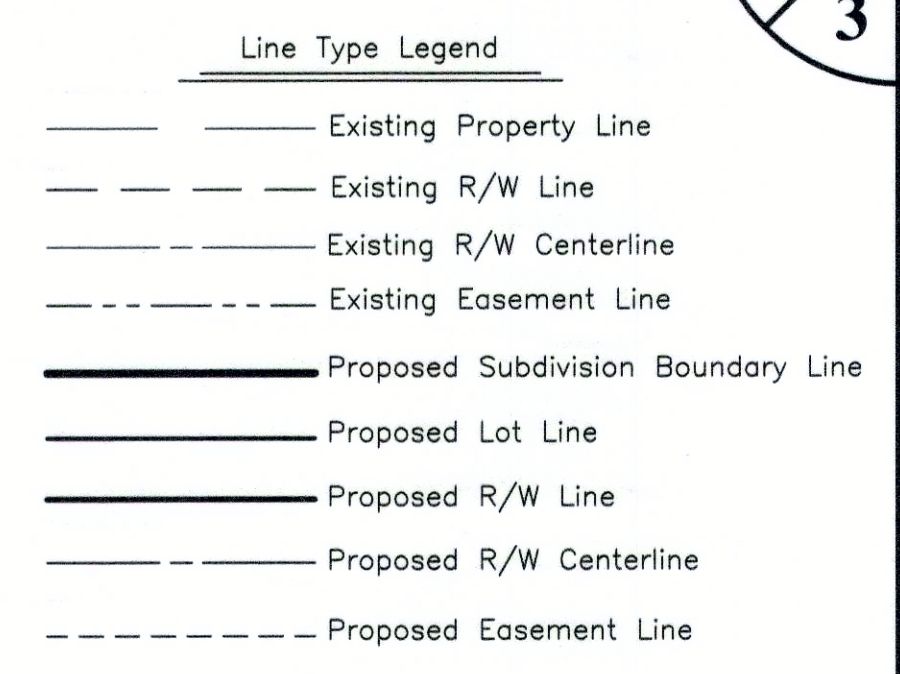


HOOVER FARMS SECTION 3

CURVE TABLE					
CURVE NO.	DELTA	RADIUS	LENGTH	CHORD BEARING	CHORD DISTANCE
C1	37°21'53"	175.00'	114.12'	N 22°18'53" E	112.11'
C2	37°21'53"	125.00'	81.52'	S 67°41'07" E	80.08'
C3	52°38'07"	125.00'	114.83'	S 22°41'07" E	110.84'
C4	90°00'00"	125.00'	196.35'	S 41°22'04" E	176.78'
C5	52°14'50"	175.00'	159.58'	S 22°29'29" E	154.11'
C6	37°45'10"	175.00'	115.31'	S 67°29'29" E	113.23'
C7	90°00'00"	175.00'	274.89'	S 41°22'04" E	247.49'
C8	90°00'00"	175.00'	274.89'	S 41°22'04" E	247.49'
C9	4°16'55"	200.00'	14.95'	S 05°46'24" W	14.94'
C10	13°11'07"	200.00'	46.03'	S 14°30'25" W	45.92'
C11	19°53'51"	200.00'	69.46'	S 31°02'54" W	69.11'
C12	16°49'46"	20.00'	5.87'	S 32°34'56" W	5.85'
C13	57°49'16"	20.00'	20.18'	S 04°44'35" E	19.34'
C14	15°21'52"	150.00'	40.22'	S 25°58'17" E	40.10'
C15	21°55'17"	150.00'	57.39'	S 07°19'42" E	57.04'
C16	15°37'13"	150.00'	40.89'	S 04°10'41" E	40.77'
C17	49°05'13"	150.00'	128.51'	S 36°31'54" E	124.62'
C18	25°17'33"	150.00'	66.22'	S 73°43'17" E	65.68'
C19	57°04'48"	200.00'	199.25'	S 57°49'40" E	191.11'
C20	11°40'58"	200.00'	40.78'	S 23°26'47" E	40.71'
C21	14°47'36"	200.00'	51.64'	S 10°12'30" E	51.50'
C22	6°26'38"	200.00'	22.49'	S 00°24'37" W	22.48'
C23	90°00'00"	20.00'	31.42'	S 41°22'04" E	28.28'
C24	90°00'00"	20.00'	31.42'	N 41°22'04" W	28.28'
C25	90°00'00"	20.00'	31.42'	N 48°37'56" E	28.28'
C26	23°56'10"	150.00'	62.66'	N 74°23'59" W	62.21'
C27	7°50'24"	200.00'	27.37'	N 82°26'52" W	27.35'
C28	18°06'36"	200.00'	63.22'	N 69°28'23" W	62.95'
C29	39°05'55"	20.00'	13.65'	N 79°58'02" W	13.38'
C30	13°19'44"	200.00'	46.53'	N 09°37'13" W	46.42'
C31	6°35'17"	200.00'	23.00'	N 00°20'17" E	22.98'
C32	90°00'00"	100.00'	157.08'	N 41°22'04" W	141.42'
C33	17°20'31"	150.00'	45.40'	S 73°01'24" E	45.23'
C34	74°39'02"	20.00'	28.06'	N 78°19'20" E	24.25'
C35	37°21'53"	150.00'	97.82'	N 22°18'53" E	96.10'
C36	33°28'55"	89.02'	52.02'	S 36°06'53" W	51.28'
C37	11°55'07"	212.73'	44.25'	S 58°48'55" W	44.17'
C38	7°58'30"	175.30'	24.40'	N 89°16'19" E	24.38'



- Ⓐ Δ=39°05'55" R=20.00'
Arc=13.65'
ChBrg=N60°56'03"E
Ch=13.36'
- Ⓑ Δ=78°11'50" R=20.00'
Arc=27.30'
ChBrg=S02°17'11"W
Ch=25.23'
- Ⓒ Δ=66°03'50" R=150.00'
Arc=172.95'
ChBrg=S29°23'59"E
Ch=163.53'
- Ⓓ Δ=20°31'38" R=200.00'
Arc=71.65'
ChBrg=S26°32'55"E
Ch=71.27'
- Ⓔ N86°22'04"W
5.00'
- Ⓕ Δ=4°40'25" R=150.00'
Arc=12.24'
ChBrg=N84°01'52"W
Ch=12.23'



2:\20190005\WORKSHEETS\PLAT\20190005-VS-PLAT-SECTION3.DWG plotted by YOUSSEF on 3/4/2020 11:43:17 AM
 2:\20190005\WORKSHEETS\PLAT\20190005-VS-PLAT-SECTION3.DWG plotted by YOUSSEF, SHERRI on 3/4/2020 11:43:43 AM last saved by YOUSSEF on 3/4/2020 11:43:17 AM
 Date: 20190605-08:48:30-PLAT-3.DWG