

ANNEXATION AN14-001

+ .2 Acres in Clinton Township

Matthew R. Vekasy/Metropolitan Holding

0.2 ACRE ANNEXATION TO THE CITY OF COLUMBUS FROM CLINTON TOWNSHIP EXPEDITED TYPE II ANNEXATION UNDER ORC §709.021 AND §709.023

Township of Clinton, Franklin County, Ohio
Quarter Township 3, Township 1, Range 18, U.S.M.D.

RECEIVED

ANNEXATION
PLAT & DESCRIPTION
ACCEPTABLE
DEAN C. RINGLE, P.E., P.S.
FRANKLIN COUNTY ENGINEER

DEC 26 2013

Franklin County Engineer By: D.C. Ringle Date: 12/16/2013
Dean C. Ringle, P.E., P.S.

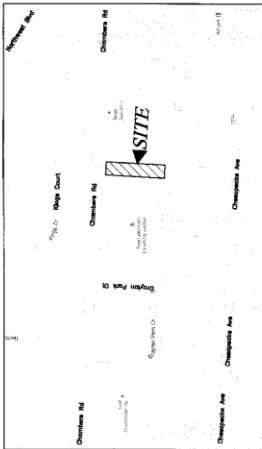
Legend



Area to be Annexed

Existing City of Columbus Corp Line

Proposed City of Columbus Corp Line



Location Map - MTS

- (A) APN 130-002350
Dorothy Stovely II,
Lincoln Heights
of Lincoln Heights
- (B) APN 130-005581
Matthew R. Vekasy/
Metropolitan Holding
Lot 32 of Lincoln Heights
- (C) APN 420-292067
Guy E. Williams Jr.
Lot 33 of Lincoln Heights

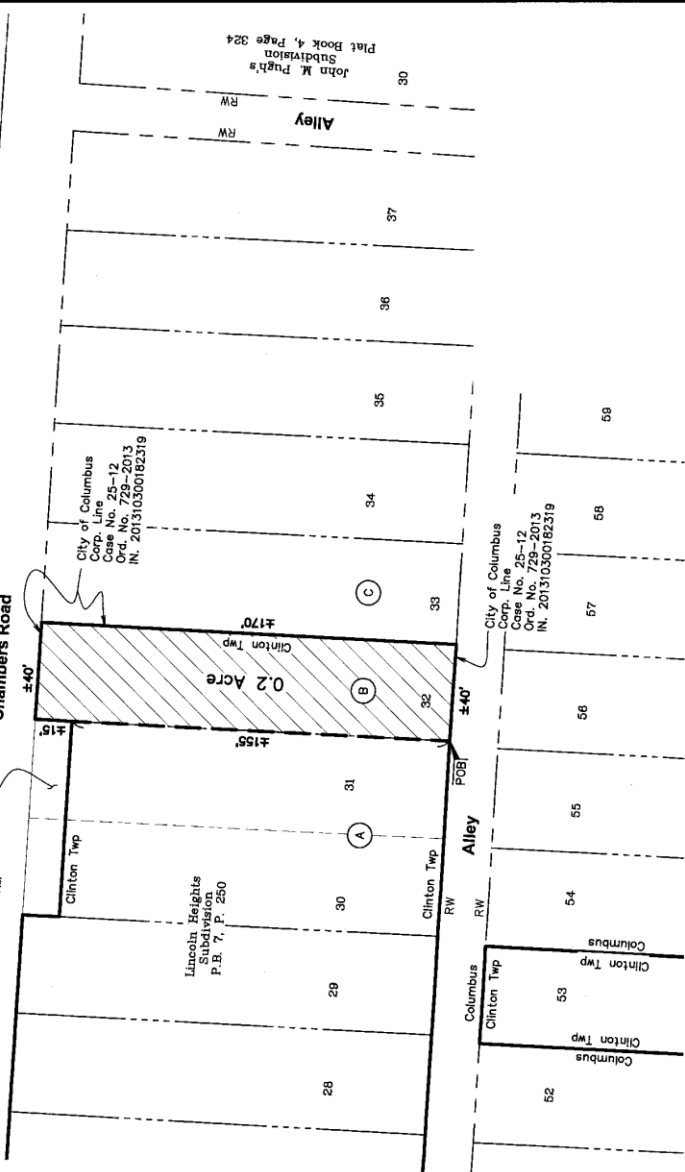
Length of Contiguity: ±265 feet
Total Length of Perimeter: ±420 feet
Percentage of Contiguity: ±63%
No islands of township property are created by this annexation.



John C. Dodd Date: 12/16/2013
John C. Dodd, P.S. 30869
Advanced Civil Design, Inc
422 Beecher Road
Columbus, OH 43230
Phone 614-428-7780

Chambers Road

Franklin County Commissioners
IN. 2013030150075147
0.028 Ac.



John M. Pugh's
Subdivision
Plat Book 4, Page 324

City of Columbus
Corp. Line
Case No. 25-12
Ord. No. 729-2013
IN. 201310300182319

City of Columbus
Corp. Line
Case No. 25-12
Ord. No. 729-2013
IN. 201310300182319