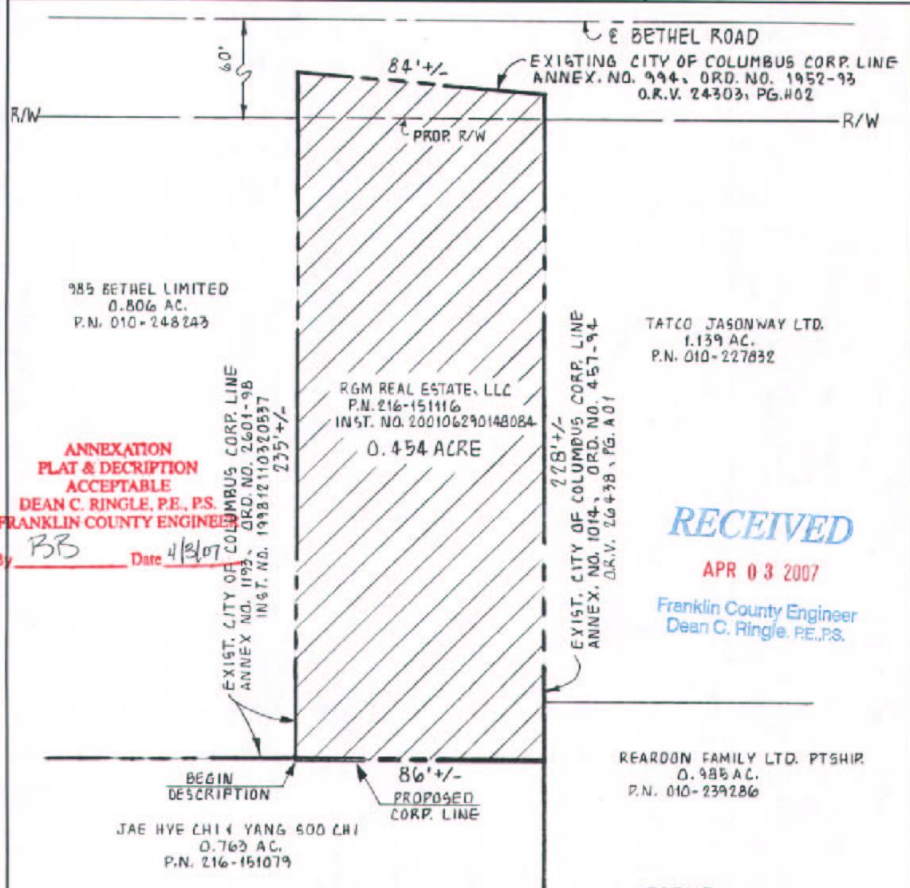
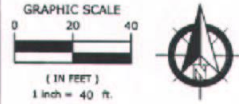


MAP
ANNEXATION AN07-006
.454 Acres in Perry Township
Columbus RGM Estate, LLC



635 Brookridge Boulevard
 Westerville, OH 43081
 Contact: BOB WYND
 614-818-4900 ext. 239
 Fax: 614-938-4902
 www.mecomp.com

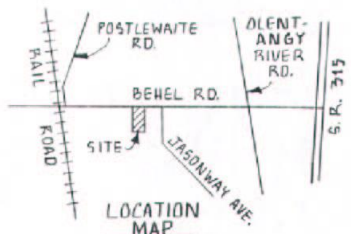
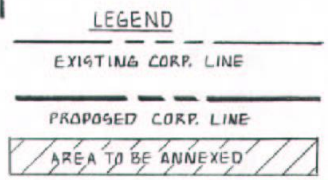
ANNEXATION PLAT



**ANNEXATION
 PLAT & DESCRIPTION
 ACCEPTABLE**
DEAN C. RINGLE, P.E., P.S.
FRANKLIN COUNTY ENGINEER
 By BB Date 4/3/07

RECEIVED
APR 03 2007
 Franklin County Engineer
 Dean C. Ringle, P.E., P.S.

SITUATED IN THE STATE OF OHIO, COUNTY
 OF FRANKLIN, TOWNSHIP OF PERRY,
 QUARTER TOWNSHIP 1, TOWNSHIP 1,
 RANGE 19, UNITED STATES MILITARY LANDS.



DRAWING PREPARED BY

 ROBERT S. WYND P.S.#6872

REV. 4/2/07
2/7/07
 DATE