



775 Yard Street, Suite 325
Columbus, Ohio 43212
p 614 764 0407
f 614 764 0237
www.ma-architects.com

ADDITIONAL INFO

265 E. STATE STREET MIXED-USE

265 E. STATE STREET | COLUMBUS, OH 43215

STATUS: PRELIMINARY NOT FOR CONSTRUCTION

REVISION

PROJECT NUMBER
2017.251

DRAWN BY
Author

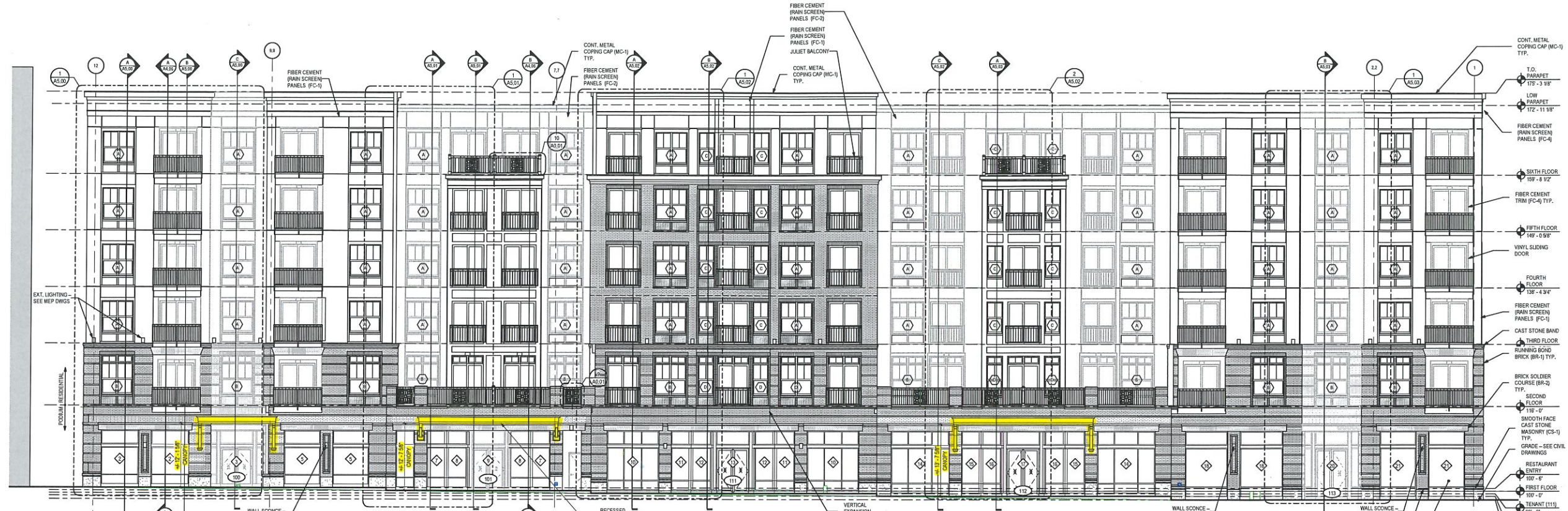
DATE
15 AUGUST 2018

SHEET NAME
EXTERIOR ELEVATIONS

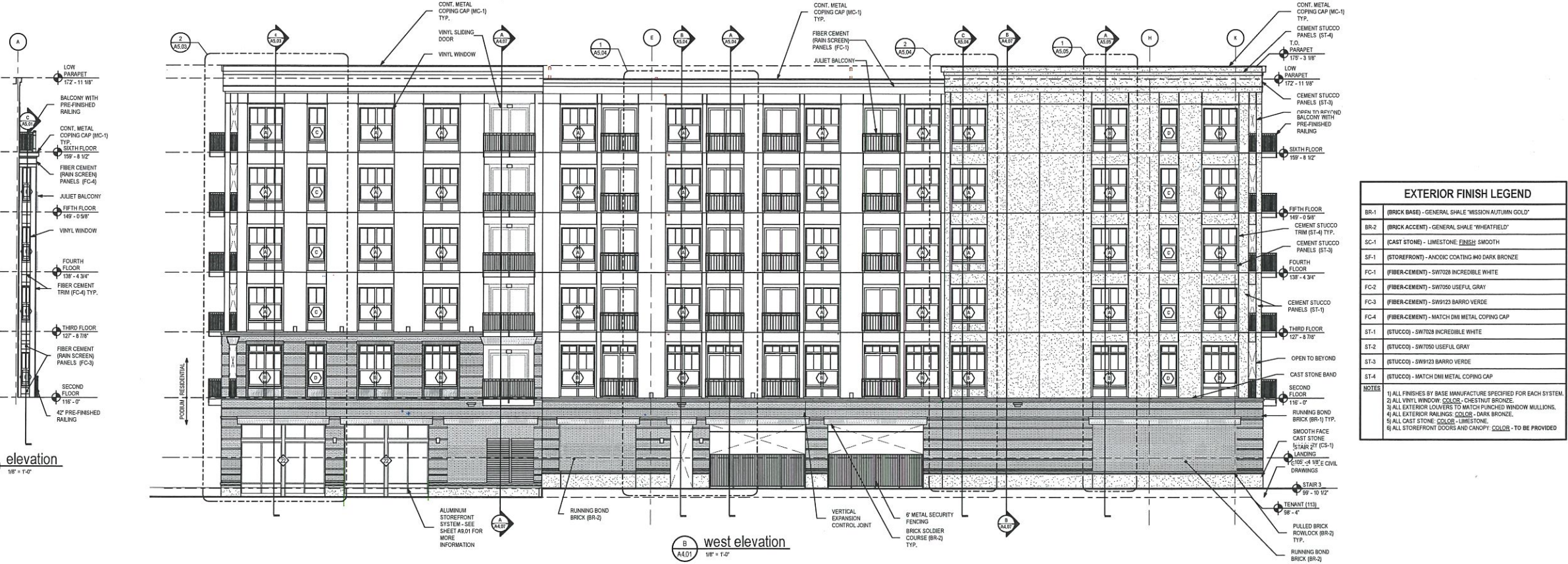
SHEET NUMBER

ma architects

A4.01



A north elevation
1/8" = 1'-0"



B west elevation
1/8" = 1'-0"

EXTERIOR FINISH LEGEND

BR-1	(BRICK BASE) - GENERAL SHALE "MISSION AUTUMN GOLD"
BR-2	(BRICK ACCENT) - GENERAL SHALE "WHEATFIELD"
SC-1	(CAST STONE) - LIMESTONE FINISH SMOOTH
SF-1	(STOREFRONT) - ANODIC COATING #40 DARK BRONZE
FC-1	(FIBER-CEMENT) - SW7028 INCREDIBLE WHITE
FC-2	(FIBER-CEMENT) - SW7050 USEFUL GRAY
FC-3	(FIBER-CEMENT) - SW9123 BARRIO VERDE
FC-4	(FIBER-CEMENT) - MATCH DMI METAL COPING CAP
ST-1	(STUCCO) - SW7028 INCREDIBLE WHITE
ST-2	(STUCCO) - SW7050 USEFUL GRAY
ST-3	(STUCCO) - SW9123 BARRIO VERDE
ST-4	(STUCCO) - MATCH DMI METAL COPING CAP

NOTES

- 1) ALL FINISHES BY BASE MANUFACTURE SPECIFIED FOR EACH SYSTEM.
- 2) ALL VINYL WINDOW COLORED - CHESTNUT BRONZE.
- 3) ALL EXTERIOR LOUVERS TO MATCH FINISHED WINDOW MULLIONS.
- 4) ALL EXTERIOR RAILINGS COLOR - DARK BRONZE.
- 5) ALL CAST STONE COLOR - LIMESTONE.
- 6) ALL STOREFRONT DOORS AND CANOPY COLOR - TO BE PROVIDED.