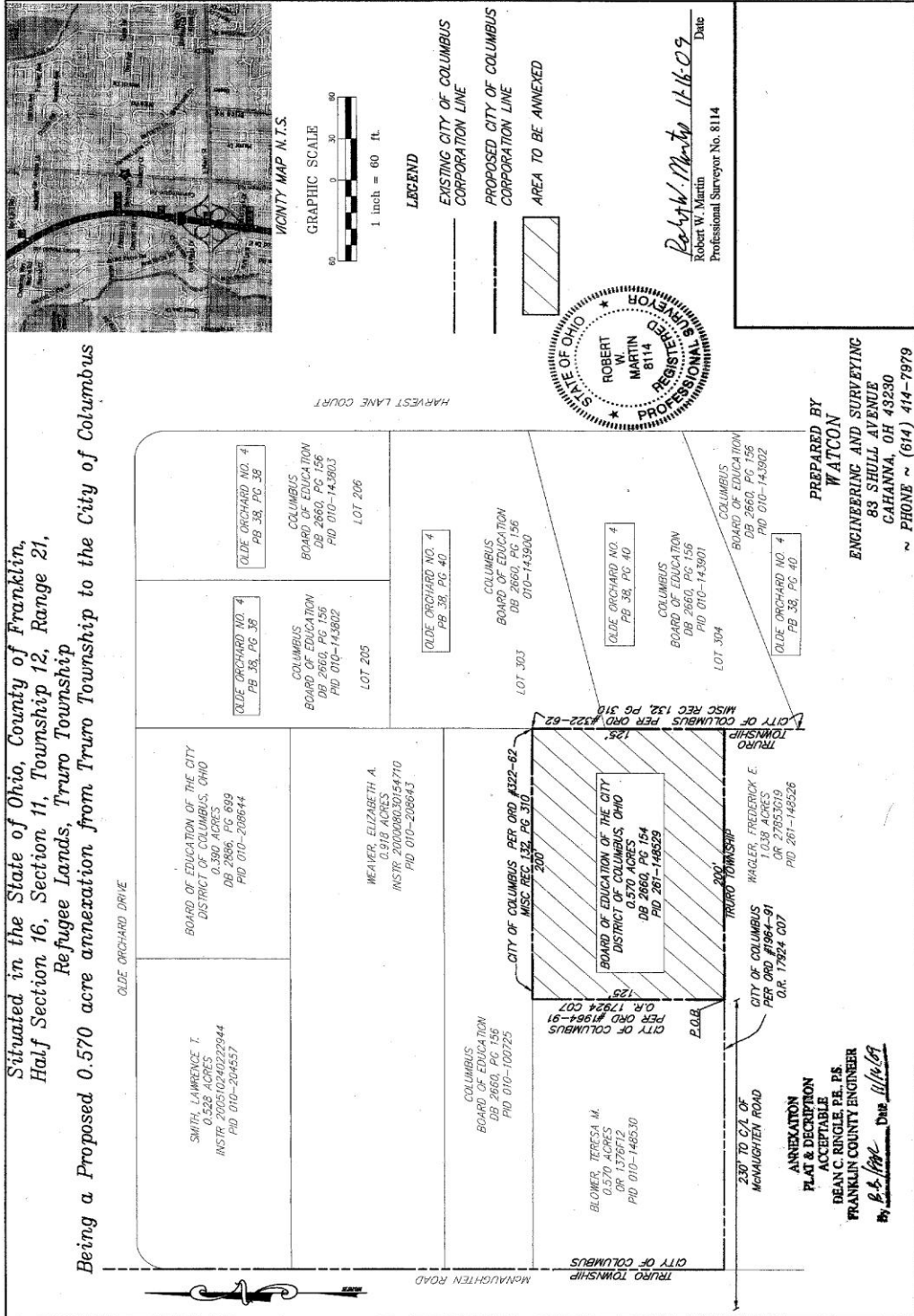


**MAP**  
**ANNEXATION AN10-001**  
**.570 ± Acres in Truro Township**  
**Board of Education of the City District of Columbus, Ohio**



*Situated in the State of Ohio, County of Franklin,  
 Half Section 16, Section 11, Township 12, Range 21,  
 Refugee Lands, Truro Township  
 Being a Proposed 0.570 acre annexation from Truro Township to the City of Columbus*

HARVEST LANE COURT

OLDE ORCHARD DRIVE

MCNAUGHTEN ROAD

TRURO TOWNSHIP

TRURO TOWNSHIP

CITY OF COLUMBUS PER ORD #1964-91

CITY OF COLUMBUS PER ORD #17924-007

CITY OF COLUMBUS PER ORD #1322-62

CITY OF COLUMBUS PER ORD #152, PG 310

CITY OF COLUMBUS PER ORD #152, PG 310

CITY OF COLUMBUS PER ORD #152, PG 310

CITY OF COLUMBUS PER ORD #152, PG 310

CITY OF COLUMBUS PER ORD #152, PG 310

CITY OF COLUMBUS PER ORD #152, PG 310

CITY OF COLUMBUS PER ORD #152, PG 310

CITY OF COLUMBUS PER ORD #152, PG 310

CITY OF COLUMBUS PER ORD #152, PG 310

CITY OF COLUMBUS PER ORD #152, PG 310

CITY OF COLUMBUS PER ORD #152, PG 310

CITY OF COLUMBUS PER ORD #152, PG 310

CITY OF COLUMBUS PER ORD #152, PG 310

CITY OF COLUMBUS PER ORD #152, PG 310

CITY OF COLUMBUS PER ORD #152, PG 310

CITY OF COLUMBUS PER ORD #152, PG 310

CITY OF COLUMBUS PER ORD #152, PG 310

CITY OF COLUMBUS PER ORD #152, PG 310

CITY OF COLUMBUS PER ORD #152, PG 310

CITY OF COLUMBUS PER ORD #152, PG 310

CITY OF COLUMBUS PER ORD #152, PG 310

CITY OF COLUMBUS PER ORD #152, PG 310

CITY OF COLUMBUS PER ORD #152, PG 310

CITY OF COLUMBUS PER ORD #152, PG 310

CITY OF COLUMBUS PER ORD #152, PG 310

CITY OF COLUMBUS PER ORD #152, PG 310

CITY OF COLUMBUS PER ORD #152, PG 310

CITY OF COLUMBUS PER ORD #152, PG 310

CITY OF COLUMBUS PER ORD #152, PG 310

CITY OF COLUMBUS PER ORD #152, PG 310

CITY OF COLUMBUS PER ORD #152, PG 310

CITY OF COLUMBUS PER ORD #152, PG 310

CITY OF COLUMBUS PER ORD #152, PG 310

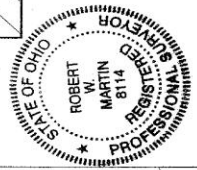
CITY OF COLUMBUS PER ORD #152, PG 310

CITY OF COLUMBUS PER ORD #152, PG 310

CITY OF COLUMBUS PER ORD #152, PG 310

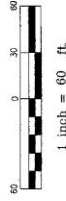
**ANNEXATION**  
**PLAN & DESCRIPTION**  
**ACCEPTABLE**  
**DEAN C. RINGLE, P.E., P.S.**  
**FRANKLIN COUNTY ENGINEER**  
*By: [Signature]* Date: *11/16/09*

**PREPARED BY**  
**WATCON**  
**ENGINEERING AND SURVEYING**  
**83 SHULL AVENUE**  
**CAHANNA, OH 43230**  
**~ PHONE ~ (614) 414-7979**



*Robert W. Martin*  
 Robert W. Martin  
 Professional Surveyor No. 8114  
 Date

GRAPHIC SCALE



1 inch = 60 ft.

**LEGEND**

EXISTING CITY OF COLUMBUS CORPORATION LINE

PROPOSED CITY OF COLUMBUS CORPORATION LINE

AREA TO BE ANNEXED

VICINITY MAP N.T.S.

