

**EASEMENT VACATION
2.480 ACRE**

Situated in the State of Ohio, County of Franklin, City of Columbus, lying in Quarter Township 1, Township 2 North, Range 17 West, United States Military District, being part of that Existing Storm Sewer Easement granted to City of Columbus, Ohio by deed of record in Instrument Number 201910280142988 and being on, over and across Part 1 of that condominium titled "Asherton Grove Condominium Fourteenth Amendment" as declared in Instrument Number 201512280180649 and as demonstrated in Condominium Plat Book 248, Page 33 (all references are to the records of the Recorder's Office, Franklin County, Ohio), being more particularly described as follows:

Beginning, for reference, at a point in the southerly right-of way line of Central College Road (width varies), the northeasterly corner of Part 1 of said "Asherton Grove Condominium Fourteenth Amendment", being in the southerly line of that 0.639 acre tract conveyed to City of Columbus, Ohio by deed of record in Instrument Number 201007090086143 and northwesterly corner of "Asherton Grove Condominium" as declared in Instrument Number 201011090150695 and as demonstrated in Condominium Plat Book 219, Page 47;

Thence North 61° 33' 08" West, with said southerly right-of-way line, the northerly line of said "Asherton Grove Condominium Fourteenth Amendment" and the southerly line of said 0.639 acre tract, a distance of 94.16 feet to a northeasterly corner of said Existing Storm Sewer Easement, the TRUE POINT OF BEGINNING;

Thence with the limits of said Existing Storm Sewer Easement and across Part 1 of said "Asherton Grove Condominium Fourteenth Amendment", the following courses and distances:

South 28° 34' 22" West, a distance of 46.75 feet to a point;

South 61° 25' 38" East, a distance of 80.17 feet to a point;

South 34° 01' 44" West, a distance of 79.49 feet to a point;

South 67° 23' 43" West, a distance of 78.60 feet to a point;

North 65° 46' 50" West, a distance of 19.64 feet to a point; and

South 17° 32' 10" West, a distance of 28.52 feet to a point;

Thence North 66° 05' 46" West, across said Existing Storm Sewer Easement and continuing across Part 1 of said "Asherton Grove Condominium Fourteenth Amendment", a distance of 20.12 feet to a point in the limits of said Existing Storm Sewer Easement;

Thence with the limits of said Existing Storm Sewer Easement and continuing across said Part 1 of said "Asherton Grove Condominium Fourteenth Amendment", the following courses and distances:

North 17° 32' 10" East, a distance of 28.62 feet to a point;

North 65° 46' 50" West, a distance of 169.29 feet to a point;

South 90° 00' 00" West, a distance of 113.16 feet to a point;

South 67° 22' 30" West, a distance of 74.56 feet to a point;

North 70° 21' 34" West, a distance of 134.99 feet to a point;

North 24° 02' 57" East, a distance of 290.33 feet to a point;

2.480 ACRE

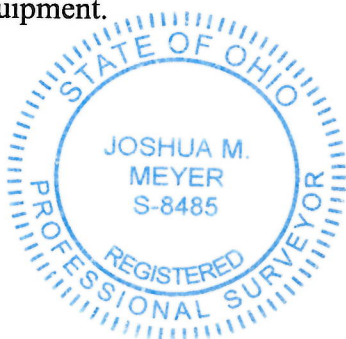
- 2 -

South 61° 25' 38" East, a distance of 467.48 feet to a point; and

North 28° 34' 22" East, a distance of 46.70 feet to a point in a northerly line of Part 1 of said "Asherton Grove Condominium Fourteenth Amendment" in said southerly right-of-way line;

Thence South 61° 33' 08" East, continuing with the limits of said Existing Storm Sewer Easement, with said northerly line and with said southerly right-of-way line, a distance of 20.00 feet to the TRUE POINT OF BEGINNING, containing 2.480 acres, more or less. Auditor's Parcel Number available.

The Bearings shown herein are based on the Ohio State Plane Coordinate System (South Zone) as per NAD83 (NSRS 2007). Control for bearings was from coordinates of monuments D5RESET and 8825RESET, having a bearing of South 45° 01' 28" West, established by the Franklin County Engineering Department, using Global Positioning System procedures and equipment.



EVANS, MECHWART, HAMBLETON & TILTON, INC.

A handwritten signature in blue ink that reads "Josh M. Meyer".

Feb. 6, 2023

Joshua M. Meyer
Professional Surveyor No. 8485

Date

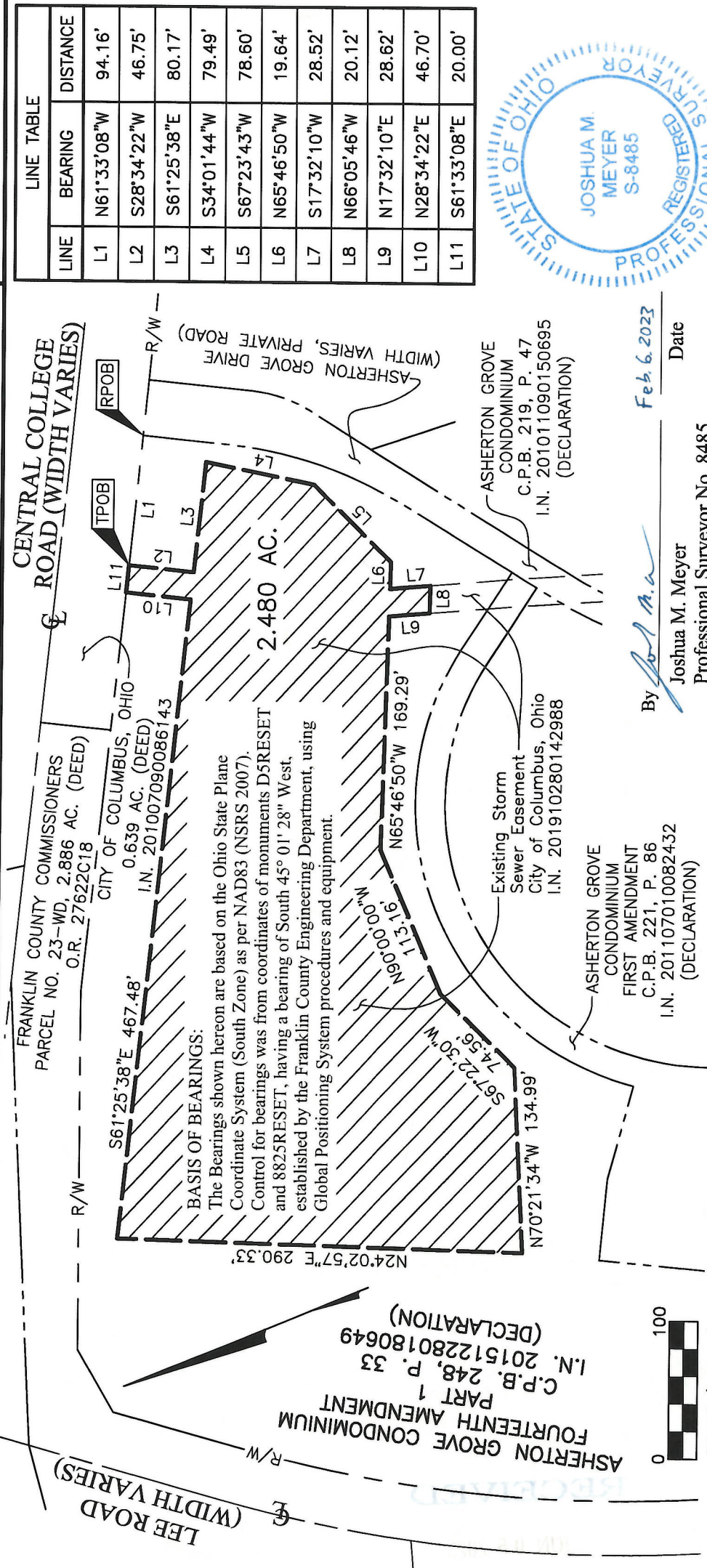
EMHT
 Evans, Meachwart, Hambleton & Tilton, Inc.
 Engineers • Surveyors • Planners • Scientists
 5000 New Albany Road, Columbus, OH 43054
 Phone: 614.775.4500 Toll Free: 888.775.3648
 emht.com

EASEMENT VACATION EXHIBIT

QUARTER TOWNSHIP 1, TOWNSHIP 2 NORTH, RANGE 17 WEST UNITED STATES MILITARY DISTRICT CITY OF COLUMBUS, COUNTY OF FRANKLIN, STATE OF OHIO

Date: February 6, 2023
 Scale: 1" = 100'
 Job No: 2019-1329
 Sheet No: 1 of 1

Plan No.
 3695-E



By *Joshua M. Meyer* Date Feb. 6, 2023
 Joshua M. Meyer
 Professional Surveyor No. 8485
 jmeyer@emht.com

