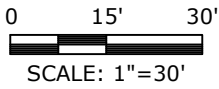
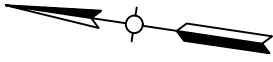


STATE OF OHIO, COUNTY OF FRANKLIN, CITY OF COLUMBUS  
 VIRGINIA MILITARY SURVEY 1393



**BASIS OF BEARINGS**

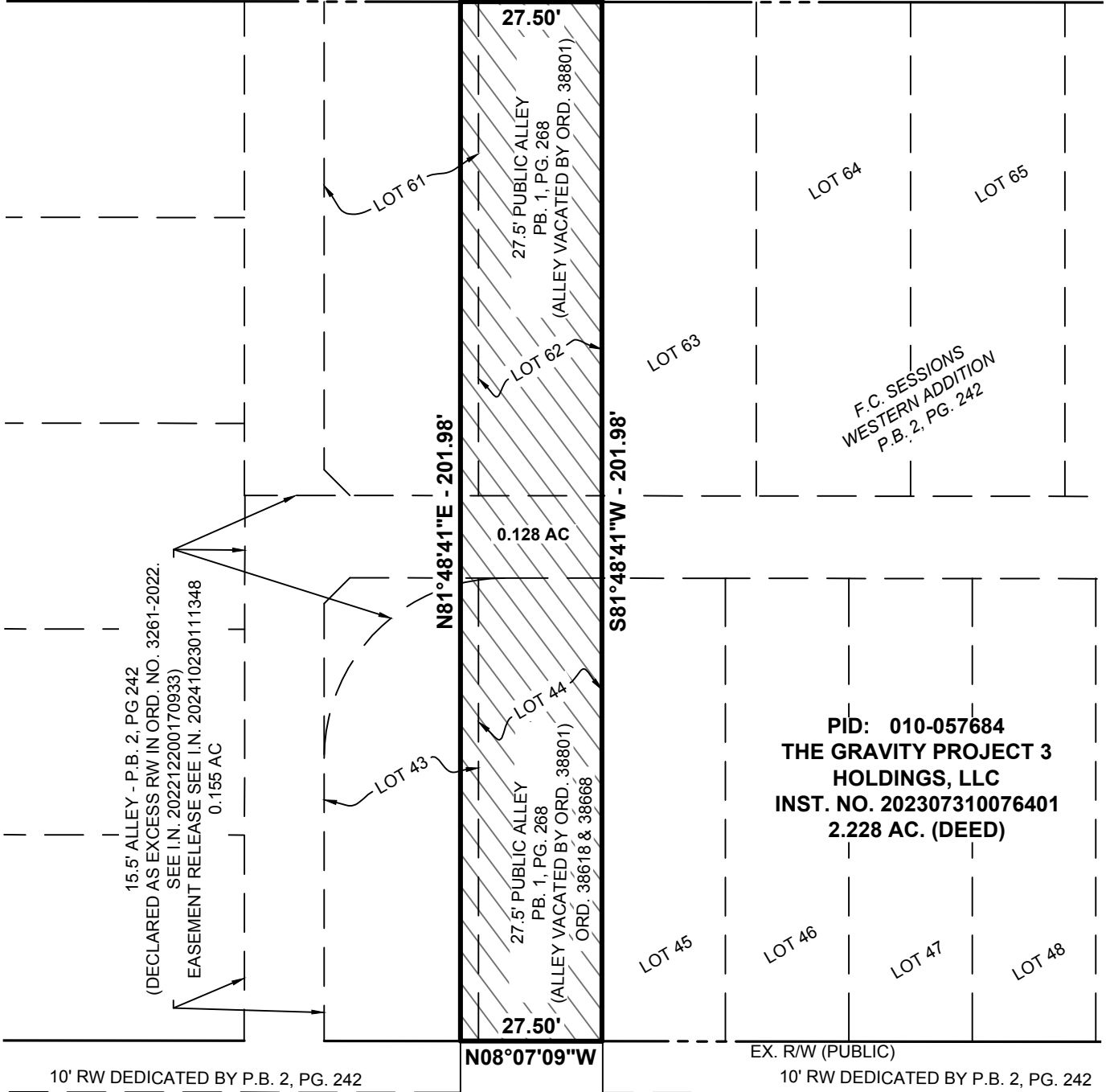
Bearings described hereon are measured from Grid North, referenced to the Ohio State Plane Coordinate System (South Zone) and the North American Datum of 1983 (2011 Adjustment), as established utilizing a GPS survey and an NGS OPUS solution.

McDOWELL STREET (66' - PUBLIC)  
 P.B. 1, PG 268

**P.O.B.**

S08°07'09"E

EX. R/W (PUBLIC)



15.5' ALLEY - P.B. 2, PG 242  
 (DECLARED AS EXCESS RW IN ORD. NO. 3261-2022.  
 SEE I.N. 202212200170933)  
 EASEMENT RELEASE SEE I.N. 202410230111348  
 0.155 AC

F.C. SESSIONS  
 WESTERN ADDITION  
 P.B. 2, PG. 242

PID: 010-057684  
 THE GRAVITY PROJECT 3  
 HOLDINGS, LLC  
 INST. NO. 202307310076401  
 2.228 AC. (DEED)

10' RW DEDICATED BY P.B. 2, PG. 242

EX. R/W (PUBLIC)  
 10' RW DEDICATED BY P.B. 2, PG. 242

MAY AVENUE (40' - PUBLIC)  
 (FKA MEAD STREET - 20' - P.B. 1, PG 268)

This easement exhibit was prepared by Brian P. Bingham, Registered Professional Surveyor No. 8438, is based upon an actual survey performed of the premises by American Structurepoint, Inc., and is true and correct to the best of my knowledge and belief.

American Structurepoint, Inc.

Brian P. Bingham \_\_\_\_\_ Date  
 Professional Land Surveyor 8438

DRAWING FILE: C:\2024\101892\Drawings\Survey\2024\05\01 Easement\Variation\_0\_128ac.dwg  
 EDITED BY: AMWARD  
 PLOT DATE: 5/7/2026 1:35 PM  
 PLOT SCALE: 1:1

KAUFMAN  
 DEVELOPMENT  
 LLC

AMERICAN  
**STRUCTUREPOINT**  
 INC.

2550 Corporate Exchange Dr, Ste 300 | Columbus, Ohio 43231  
 TEL 614.901.2235 | FAX 614.901.2236  
 www.structurepoint.com

0.128 ACRE EXHIBIT  
 FOR  
 501 W. BROAD STREET  
 CITY OF COLUMBUS, FRANKLIN COUNTY, OHIO

DATE:	05/06/2026
DRAWN BY:	AMW
CHECKED BY:	BPB
JOB NUMBER:	2021.01892

1 of 1