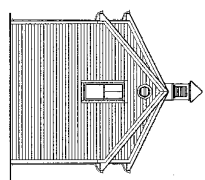
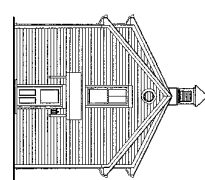


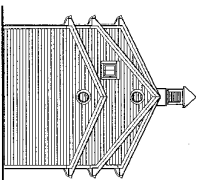
CARRIAGE HOUSE A FRONT ELEVATION



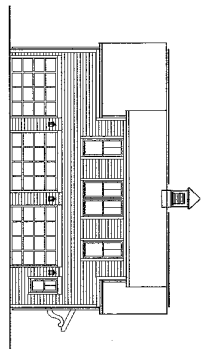
CARRIAGE HOUSE A REAR ELEVATION



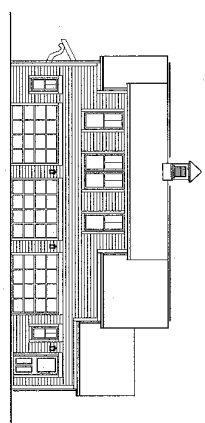
CARRIAGE HOUSE B FRONT ELEVATION



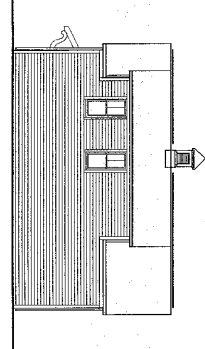
CARRIAGE HOUSE B REAR ELEVATION



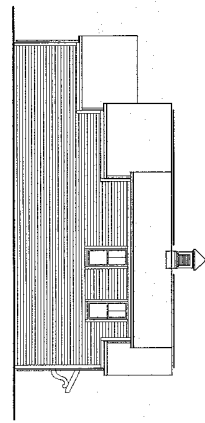
CARRIAGE HOUSE A LEFT ELEVATION



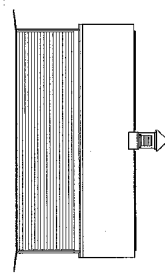
CARRIAGE HOUSE B LEFT ELEVATION



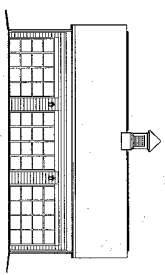
CARRIAGE HOUSE A RIGHT ELEVATION



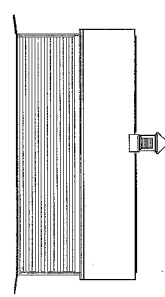
CARRIAGE HOUSE B RIGHT ELEVATION



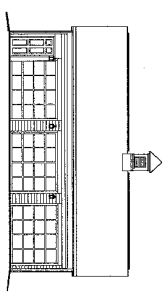
3-CAR GARAGE A REAR ELEVATION



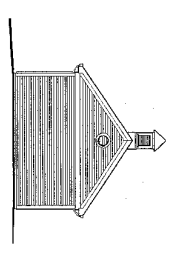
3-CAR GARAGE A FRONT ELEVATION



3-CAR GARAGE B REAR ELEVATION



3-CAR GARAGE B FRONT ELEVATION



3-CAR GARAGE A & B SIDE ELEVATION

Final Sign
Don Siegel
4/23/04

[Handwritten signature]

April 26, 2004

SHEET NO. E-2	PROJECT NO. 03009200
TITLE CARRIAGE HOUSE AND GARAGE ELEVATIONS	DATE APRIL 26, 2004
DRAWN BY [Signature]	CHECKED BY [Signature]


SULLIVAN BRUCK ARCHITECTS
 309 South Fourth Street Columbus, Ohio 43215
 TEL: 614.464.9800 FAX: 614.464.9800 sbrarch.com

Drayton Court
 Chambers Road
 Columbus, Ohio
 Metropolitan Holdings