

**FINAL PLAT**

PLAN PREPARED BY: JEP  
CHECKED BY: JEP

781 Science Blvd., Suite 100  
Gahanna, Ohio 43230  
ph 614.428.7750  
fax 614.428.7755

**ADVANCED CIVIL DESIGN**  
ENGINEERS SURVEYORS

DATE: June 28, 2022 SHEET 2 / 4  
JOB NO.: 21-0009-606

**RENNER PARK SECTION 1**

VIRGINIA MILITARY SURVEY NO. 6635  
COLUMBUS-HILLIARD, NORWICH TOWNSHIP,  
FRANKLIN COUNTY, OHIO

**CURVE TABLE**

NO.	DELTA	RADIUS	LENGTH	CHORD BEARING	CHORD DIST.
C25	30°11'26"	50.00'	26.35'	N11°12'13"W	26.04'
C26	90°00'00"	25.00'	39.27'	N48°53'29"E	35.36'
C27	90°00'00"	25.00'	39.27'	S41°06'31"E	35.36'
C28	90°00'00"	25.00'	39.27'	N48°53'29"E	35.36'
C29	20°51'47"	200.00'	72.83'	N83°27'36"E	72.42'
C30	46°41'19"	220.00'	179.27'	S41°39'24"W	174.35'
C31	95°14'37"	40.00'	66.49'	S40°49'46"W	59.10'
C32	0°30'36"	2241.72'	19.96'	S07°02'58"E	19.96'
C33	0°38'36"	5759.58'	64.67'	N06°28'21"W	64.67'
C34	90°00'00"	25.00'	39.27'	N48°53'29"E	35.36'
C35	90°00'00"	25.00'	39.27'	S41°06'31"E	35.36'
C36	90°00'00"	25.00'	39.27'	S48°53'29"W	35.36'
C37	90°00'00"	25.00'	39.27'	N41°06'31"W	35.36'
C38	11°27'18"	1115.92'	223.10'	S66°47'02"E	222.73'
C39	7°33'45"	1095.92'	144.65'	S68°28'33"E	144.55'
C40	93°00'26"	25.00'	40.58'	S18°11'28"E	36.27'
C41	65°34'44"	150.00'	171.69'	S61°06'07"W	162.47'
C42	44°42'57"	200.00'	156.09'	N50°40'14"E	152.16'
C43	78°28'11"	25.00'	34.24'	N67°32'43"E	31.62'
C44	3°35'53"	1075.92'	67.56'	N65°11'09"W	67.55'
C45	56°18'05"	130.00'	127.74'	N56°27'48"E	122.67'
C46	12°10'44"	25.00'	5.31'	N67°08'43"W	5.30'
C47	4°29'44"	1115.92'	87.56'	N70°15'49"W	87.53'

**OWNERSHIP INFORMATION**

(A) Homewood Corporation  
P.N. 203-299509  
I.N. 202203180043534  
Lot 15

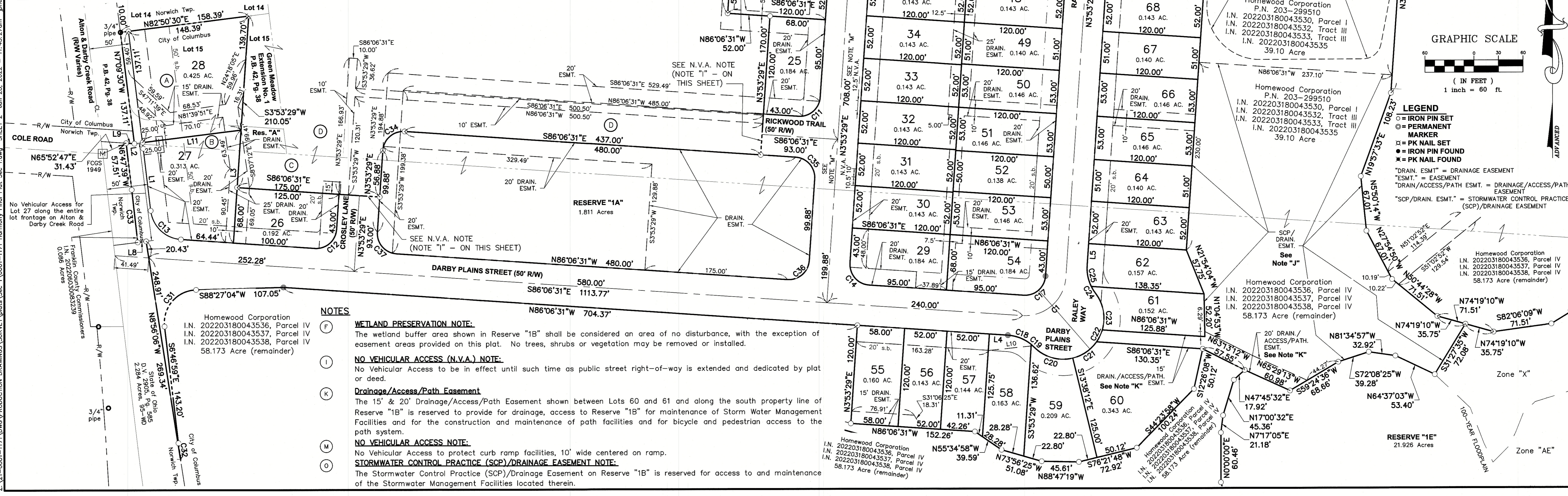
(B) Homewood Corporation  
P.N. 203-299508  
I.N. 202203180043530, Parcel II  
I.N. 202203180043533, Parcel IV  
I.N. 202203180043534  
Reserve "A"

(C) Homewood Corporation  
I.N. 202203180043536, Parcel IV  
I.N. 202203180043537, Parcel IV  
I.N. 202203180043538, Parcel IV  
58.173 Acre (remainder)

(D) Homewood Corporation  
P.N. 203-299510  
I.N. 202203180043530, Parcel I  
I.N. 202203180043532, Tract III  
I.N. 202203180043533, Tract III  
I.N. 202203180043535  
39.10 Acre

**CURVE TABLE**

NO.	DELTA	RADIUS	LENGTH	CHORD BEARING	CHORD DIST.
C1	90°00'00"	50.00'	78.54'	N48°53'29"E	70.71'
C2	90°00'00"	50.00'	78.54'	N48°53'29"E	70.71'
C3	65°34'44"	175.00'	200.30'	N61°06'07"E	189.54'
C4	31°58'51"	50.00'	27.91'	N70°07'05"W	27.55'
C5	11°44'21"	50.00'	10.24'	N59°59'50"W	10.23'
C6	47°45'34"	50.00'	41.68'	N89°44'48"W	40.48'
C7	47°45'34"	50.00'	41.68'	S42°29'38"W	40.48'
C8	46°39'53"	50.00'	40.72'	S04°43'05"E	39.61'
C9	16°08'35"	50.00'	14.09'	S19°58'45"E	14.04'
C10	15°47'57"	50.00'	13.79'	S04°00'29"E	13.74'
C11	90°00'00"	25.00'	39.27'	S48°53'29"W	35.36'
C12	90°00'00"	25.00'	39.27'	S48°53'29"W	35.36'
C13	79°18'51"	40.00'	55.37'	N46°27'05"W	51.06'
C14	90°00'00"	25.00'	39.27'	N41°06'31"W	35.36'
C15	90°00'00"	25.00'	39.27'	N48°53'29"E	35.36'
C16	90°00'00"	25.00'	39.27'	S41°06'31"E	35.36'
C17	90°00'00"	25.00'	39.27'	S48°53'29"W	35.36'
C18	35°48'45"	50.00'	31.25'	S68°12'08"E	30.75'
C19	5°35'49"	50.00'	4.88'	S47°29'51"E	4.88'
C20	58°56'16"	50.00'	51.43'	S74°10'04"E	49.20'
C21	41°08'22"	50.00'	35.90'	N55°47'37"E	35.13'
C22	18°37'24"	50.00'	16.25'	N25°54'44"E	16.18'
C23	54°07'07"	50.00'	47.23'	N10°27'32"W	45.49'
C24	11°13'09"	50.00'	9.79'	N31°54'31"W	9.77'



Z:\21-0001-1171\DWG\PRODUCTION DRAWINGS\SURVEY\Plats\Sec 1\0001-1171 Harmony Final Plat Sec 1.dwg SHEET 2 Jun 28, 2022 11:43:27am p Phelps