

EXHIBIT OF A  
**0.110 ACRE WALL, SIDEWALK  
 & LANDSCAPE EASEMENT**

SITUATED IN THE STATE OF OHIO, COUNTY OF DELAWARE,  
 CITY OF COLUMBUS, BEING PART OF FARM LOT 18,  
 QUARTER TOWNSHIP 4, TOWNSHIP 3, RANGE 18,  
 UNITED STATES MILITARY LANDS.



**ACREAGE BREAKDOWN**

0.110 ACRES OUT OF DEDICATED RIGHT-OF-WAY.  
 0.110 ACRES OUT OF FARM LOT 18.

**NOTE**

ALL RECORD INFORMATION SHOWN HEREON WAS OBTAINED  
 FROM THE RECORDER'S OFFICE, DELAWARE COUNTY, OHIO.

**BASIS OF BEARINGS**

BEARINGS ARE BASED ON DATA ACQUIRED BY GPS  
 OBSERVATIONS AS PER NAD 83 (1995)-OHIO STATE PLANE  
 COORDINATE SYSTEM-NORTH ZONE FROM THE DELAWARE  
 COUNTY GEODETIC CONTROL MONUMENTATION.

I HEREBY STATE THAT THIS SURVEY IS BASED ON ACTUAL FIELD MEASUREMENTS  
 AND TO THE BEST OF MY KNOWLEDGE AND BELIEF IS CORRECT.

*Darrell B. Plummer*

*4/22/2015*

DARRELL B. PLUMMER, P.S.  
 PROFESSIONAL SURVEYOR NO. 7595

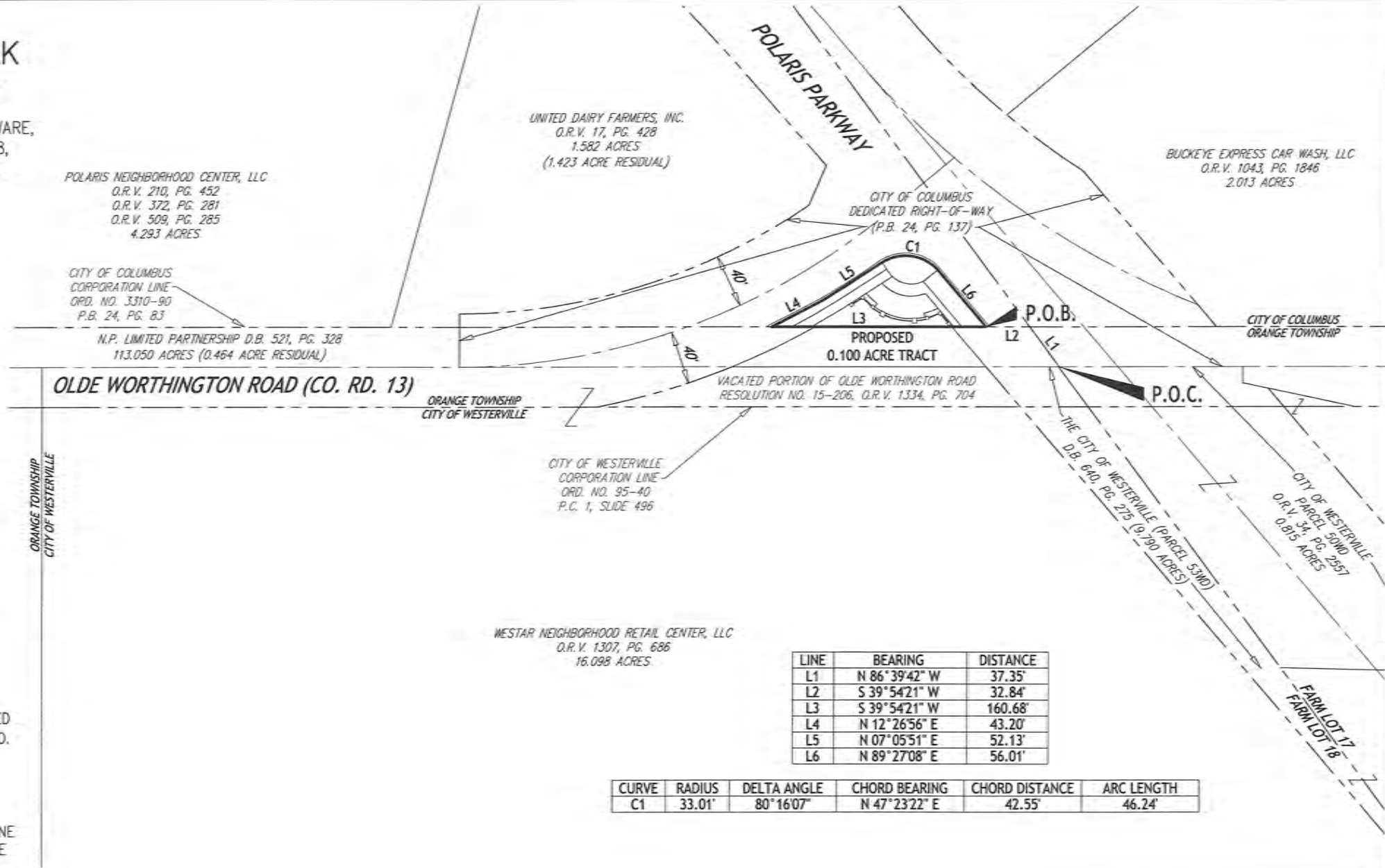
DATE



NORTH



SCALE: 1" = 100'



LINE	BEARING	DISTANCE
L1	N 86°39'42" W	37.35'
L2	S 39°54'21" W	32.84'
L3	S 39°54'21" W	160.68'
L4	N 12°26'56" E	43.20'
L5	N 07°05'51" E	52.13'
L6	N 89°27'08" E	56.01'

CURVE	RADIUS	DELTA ANGLE	CHORD BEARING	CHORD DISTANCE	ARC LENGTH
C1	33.01'	80°16'07"	N 47°23'22" E	42.55'	46.24'

PAGE 2 OF 2

DRAWN BY: DBP

CHECKED BY: KAS

FILE NO. 13377