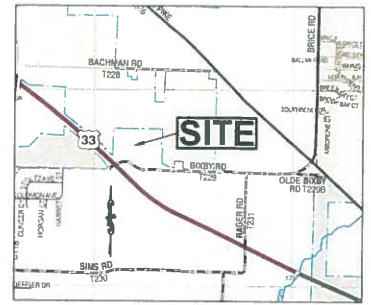
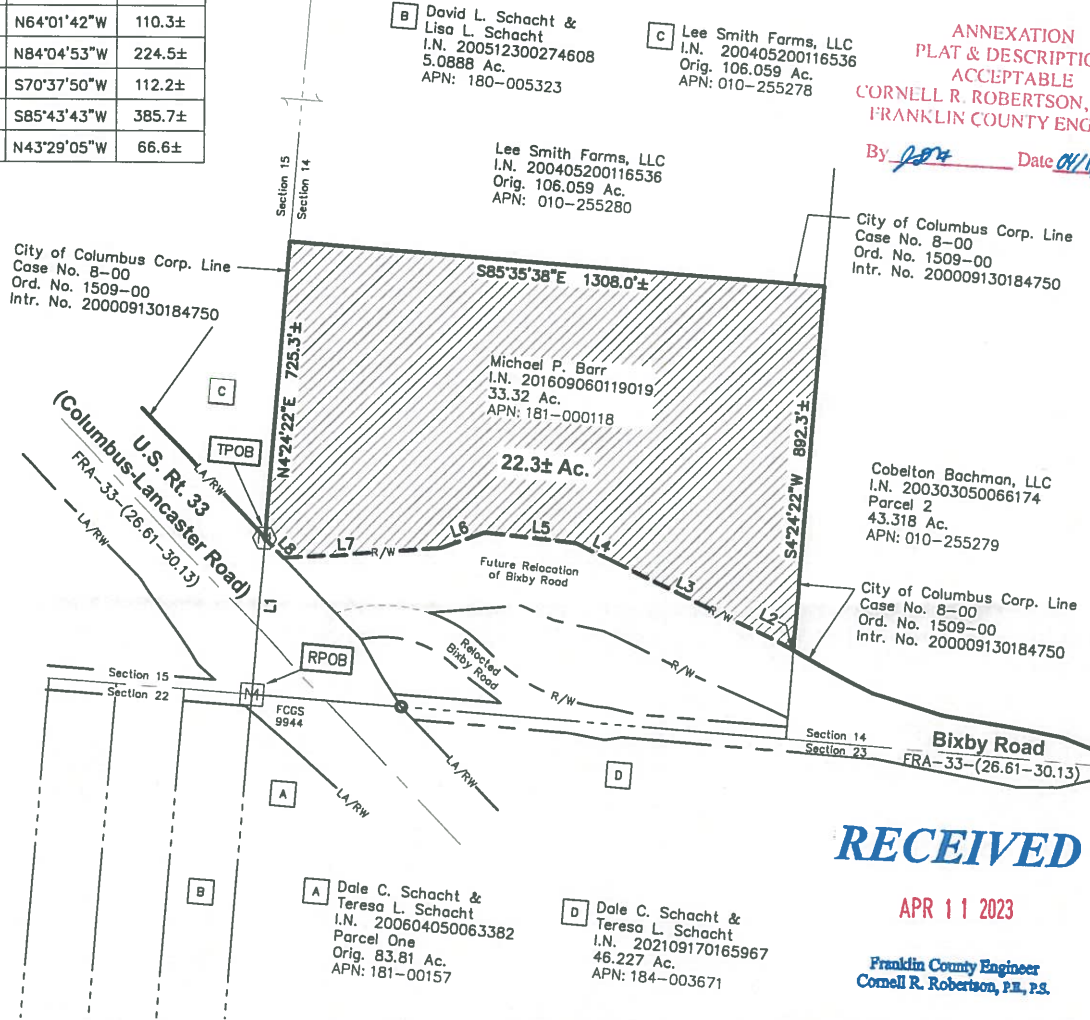


**22.3± ACRE ANNEXATION FROM THE
TOWNSHIP OF MADISON TO
THE CITY OF COLUMBUS**
Township of Madison, Franklin County, Ohio
Section 14, Township 11, Range 21
Congress Lands



LINE TABLE		
LINE	BEARING	DISTANCE
L1	N04°24'22"E	384.7±
L2	N62°15'37"W	9.9±
L3	N63°48'14"W	472.3±
L4	N64°01'42"W	110.3±
L5	N84°04'53"W	224.5±
L6	S70°37'50"W	112.2±
L7	S85°43'43"W	385.7±
L8	N43°29'05"W	66.6±



**ANNEXATION
PLAT & DESCRIPTION
ACCEPTABLE**
CORNELL R. ROBERTSON, P.E., P.S.
FRANKLIN COUNTY ENGINEER

By [Signature] Date 04/11/2023

RECEIVED

APR 11 2023

Franklin County Engineer
Cornell R. Robertson, P.E., P.S.

Length of Contiguity: ±2925.6 feet
Total Length of Perimeter: ±4307.1 feet
Percentage of Contiguity: ±67.9%

No islands of township property are created by this annexation.

Legend

- Area to be Annexed
- Existing City of Columbus Corp Line
- Proposed City of Columbus Corp Line

[Signature] 4/5/23
Douglas R. Hock, P.S. 7661 Date:

Advanced Civil Design, Inc
781 Science Boulevard,
Suite 100
Gahanna, OH 43230
Phone 614-428-7750

Job No.: 22-0266-128
Date: 04/04/23



GRAPHIC SCALE



1 inch = 300 feet

This exhibit is based on information obtained from the Franklin County Auditor's, from the Franklin County Recorder's Office and information obtained from an actual field survey performed by Advanced Civil Design, Inc. in December of 2022.