

EXHIBIT A
1.9308 ACRES

Situated in the State of Ohio, Franklin County, City of Columbus, being part of ¼ Township 4, Township 1, Range 18, and part of 9.74-acre and 4.146-acre parcels of land conveyed to City of Columbus, Ohio in Instrument Number 199804300104041, and more fully described as follows:

Commencing in the northeasterly corner of said 9.74-acre City of Columbus parcel, said point being in the westerly right of way line of Parkwood Avenue (right of way varies);

Thence, in the easterly line of said 9.74-acre City of Columbus parcel and the westerly right of way line of said Parkwood Avenue, South 03° 01' 46" West a distance of 256.46 feet to the Point of Beginning for the Environmental Covenant herein described;

Thence, continuing in the easterly line of said 9.74-acre City of Columbus parcel and the westerly right of way line of said Parkwood Avenue, South 03° 01' 46" West a distance of 69.67 feet to a point;

Thence, South 62° 16' 17" West a distance of 65.86 feet to a point;

Thence, North 48° 39' 36" West a distance of 114.31 feet to a point;

Thence, North 76° 53' 28" West a distance of 118.32 feet to a point;

Thence, South 73° 50' 47" West a distance of 97.89 feet to a point;

Thence, North 80° 23' 08" West a distance of 232.22 feet to a point;

Thence, North 42° 14' 29" West a distance of 364.42 feet to a point;

Thence, South 67° 52' 39" West a distance of 25.64 feet to a point in the westerly line of said 9.74-acre City of Columbus parcel;

Thence, in the westerly line of said 9.74-acre and 4.146-acre City of Columbus parcels, North 03° 01' 46" East a distance of 97.27 feet to a point;

Thence, South 72° 40' 07" East a distance of 79.22 feet to a point;

Thence, South 43° 34' 23" East a distance of 220.90 feet to a point;

Thence, South 77° 13' 03" East a distance of 59.88 feet to a point;

Thence, South 14° 26' 22" East a distance of 105.22 feet to a point;

Thence, South 86° 40' 00" East a distance of 220.02 feet to a point;

Thence, North 53° 17' 51" East a distance of 31.18 feet to a point;

Thence, South 86° 42' 59" East a distance of 56.65 feet to a point;

Thence, South 74° 56' 27" East a distance of 72.55 feet to a point;

Thence, South 71° 22' 08" East a distance of 175.00 feet to the Point of Beginning and containing 1.9308 acre of land, more or less. The above described parcel is located within Franklin County Auditor's Parcel Number 010-098900-00.

The Basis of Bearings is Geodetic North derived from GPS observations using ODOT CORS Network Stations, converted to the Ohio State Plane Coordinates South Zone, Horizontal Datum NAD83 (2011).

This description was prepared by Amy Bernicken (Ohio Professional Surveyor Number 8571) of Barr Engineering, Inc. and is based on survey field work performed under her direction in July of 2014.



BARR ENGINEERING, INC.

Amy Bernicken, P.S. 8571

7-28-2015

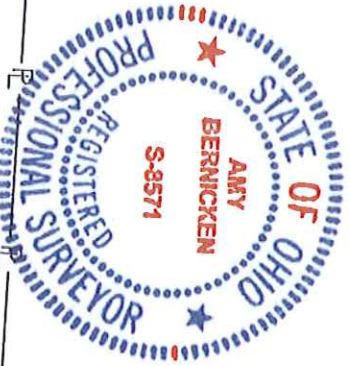
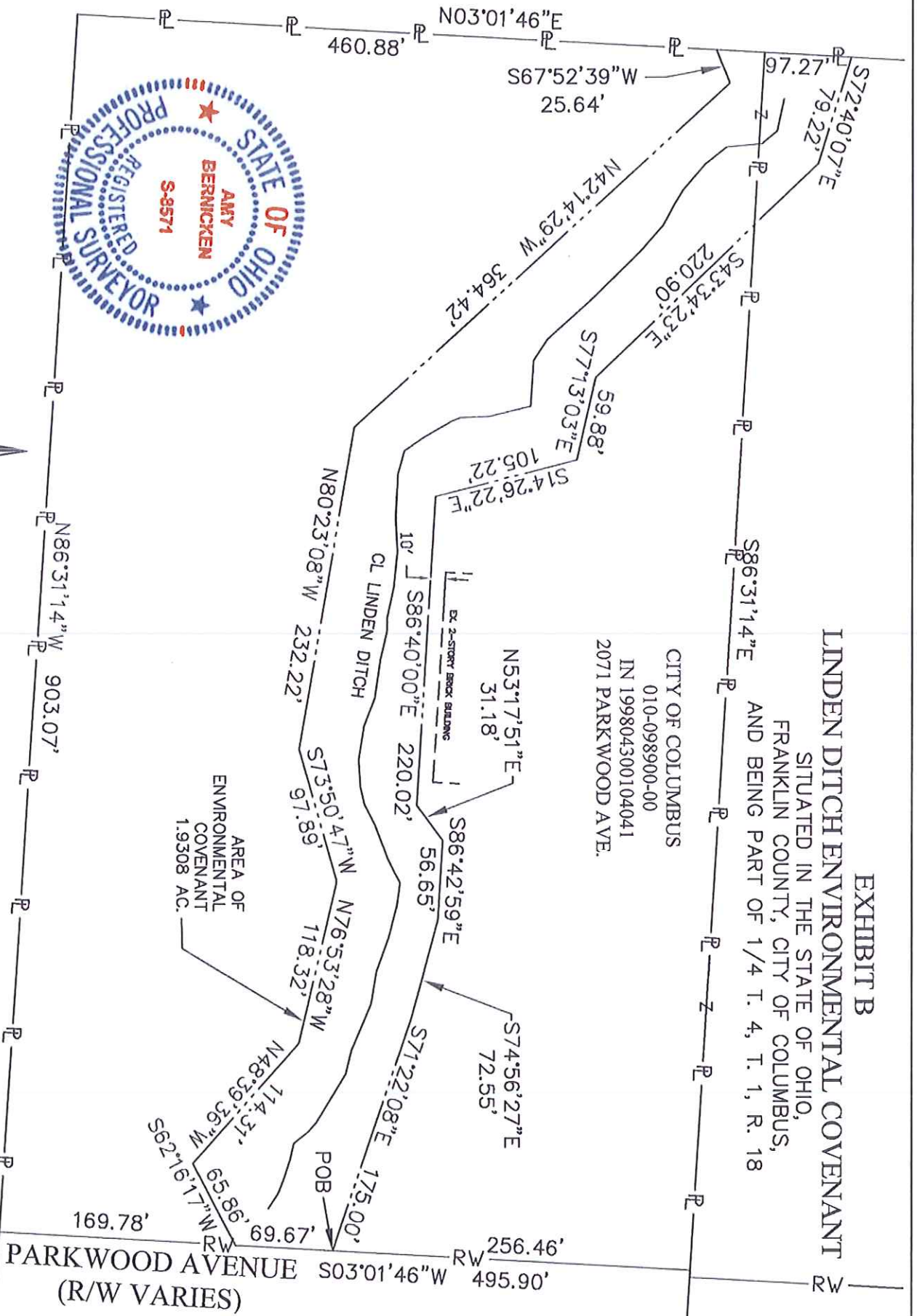
Date

EXHIBIT B

LINDEN DITCH ENVIRONMENTAL COVENANT

SITUATED IN THE STATE OF OHIO,
FRANKLIN COUNTY, CITY OF COLUMBUS,
AND BEING PART OF 1/4 T. 4, T. 1, R. 18

CITY OF COLUMBUS
010-098900-00
IN 199804300104041
2071 PARKWOOD AVE.



AMY BERNICKIEN, P.S. 8571

DATE

7-28-2015



0 100' 200'
1 INCH = 100 FEET

BARR ENGINEERING, INC.
2800 CORPORATE EXCHANGE DRIVE,
SUITE 240
COLUMBUS, OH 43231
614-714-0299

PARKWOOD AVENUE
(R/W VARIES)