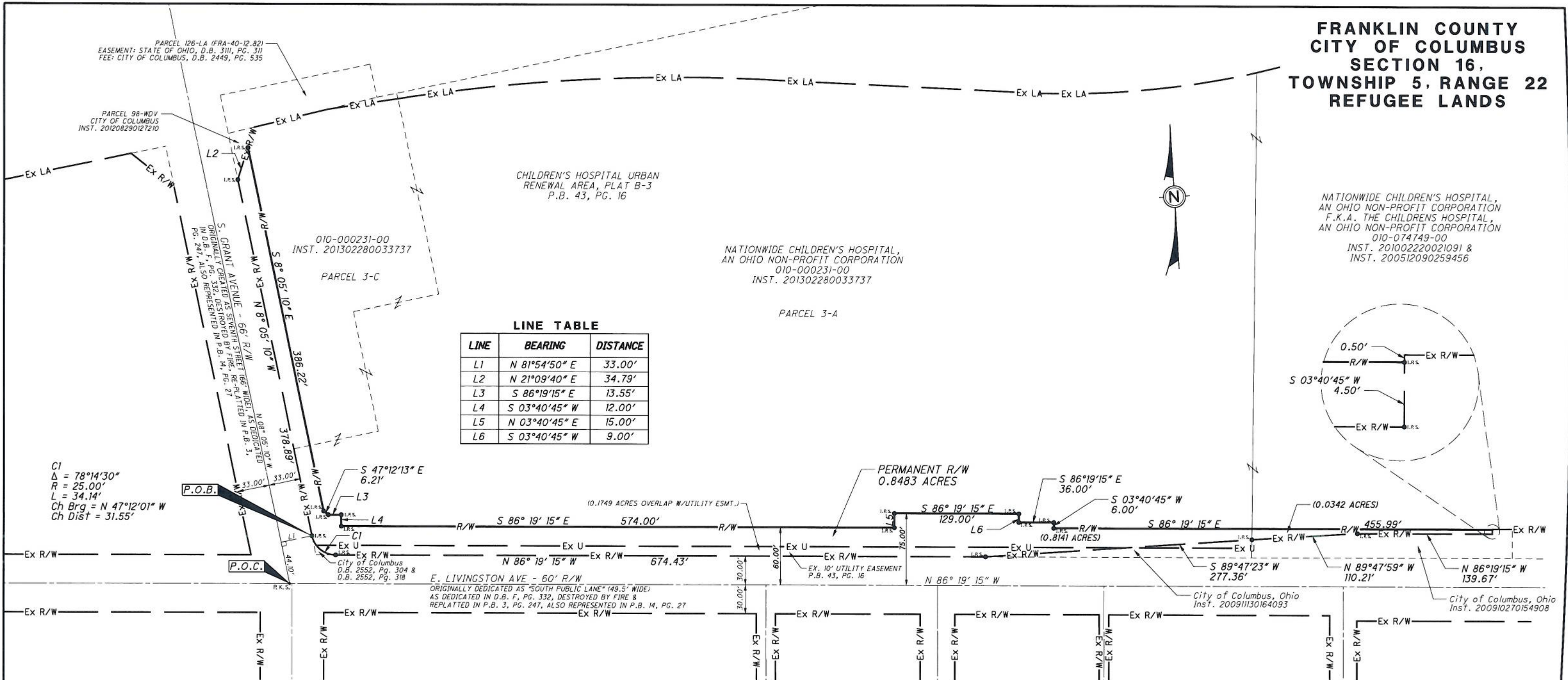


PERMANENT R/W PARCEL 26-WD EXHIBIT A

100 0 50 100
1 INCH = 100 FT.

**FRANKLIN COUNTY
CITY OF COLUMBUS
SECTION 16,
TOWNSHIP 5, RANGE 22
REFUGEE LANDS**



C1
Δ = 78°14'30"
R = 25.00'
L = 34.14'
Ch Brg = N 47°12'01" W
Ch Dist = 31.55'



PERTINENT DOCUMENTS USED:
INST. 201302280033737
P.B. 43, PG. 16
FRA-70-14.48 & FRA-40-12.82

BASIS OF BEARINGS:
BEARINGS ARE BASED ON THE BEARING BETWEEN FRANKLIN COUNTY MONUMENTS "FRANK43" AND "FRANK143" BEING S 87°56'15" E, AS MEASURED ON GRID NORTH, OF THE OHIO STATE PLANE COORDINATE SYSTEM, SOUTH ZONE (2011).

LEGEND:
P.O.B. = POINT OF BEGINNING
P.O.C. = POINT OF COMMENCEMENT
● I.R.S. = 5/8" REBAR (SET), WITH CAP "GPD"
● P.K.S. = P.K. NAIL SET

STEVEN L. MULLANEY, P.S. 7900

10/19/2016
DATE

EXHIBIT B

Ver. Date: 10/07/2016

Page 1 of 3

PERMANENT RIGHT OF WAY PARCEL 26-WD 0.8483 ACRES

Situated in the State of Ohio, Franklin County, City of Columbus, Section 16, Township 5, Range 22, Refugee lands, being part of Parcels 3-A and 3-C of Children's Hospital Urban Renewal Area, Plat B-3, as recorded in Plat Book 43, Page 16, said Parcels 3-A and 3-C being in the name of Nationwide Children's Hospital, an Ohio non-profit corporation, as recorded in Instrument No. 201302280033737, and part of a tract in the name of Nationwide Children's Hospital, an Ohio non-profit corporation, f.k.a. The Children's Hospital, an Ohio non-profit corporation, as recorded in Instrument Number 201002220021091 and Instrument Number 200512090259456 and being more particularly described as follows:

Commencing, for reference, at a P.K. Nail (set) at the intersection of the centerline of right of way of East Livingston Avenue (60' Right of Way), originally dedicated as South Public Lane (49.5' Wide), as dedicated in Deed Book F, Page 332, destroyed by fire and re-platted in Plat Book 3, Page 247, also represented in Plat Book 14, Page 27 and the centerline of right of way of South Grant Avenue (66' Right of Way), originally created as Seventh Street (66' Wide), as dedicated in Deed Book F, Page 332, destroyed by fire and re-platted in Plat Book 3, Page 247, also represented in Plat Book 14, Page 27; thence, leaving said Livingston Avenue, along the centerline of right of way of said South Grant Avenue, North 08 degrees 05 minutes 10 seconds West, a distance of 44.10 feet to a point; thence, leaving said centerline and being perpendicular to, North 81 degrees 54 minutes 50 seconds East, a distance of 33.00 feet to a 5/8 inch rebar (set), with cap stamped "GPD", at the northwesterly corner of a tract in the name of the City of Columbus, as recorded in Deed Book 2552, Page 304 and Deed Book 2552, Page 318, said corner being on the easterly existing right of way line of said South Grant Avenue and the **Point of Beginning** of the parcel herein described; Thence, clockwise along the following nineteen (19) courses:

1. Thence, along said existing right of way line, **North 08 degrees 05 minutes 10 seconds West**, a distance of **378.89 feet** to a 5/8 inch rebar (set), with cap stamped "GPD", at the southerly corner of a parcel in the name of the City of Columbus, known as 98-WDV, and recorded in Instrument Number 201208290127210;
2. Thence, continuing along said existing right of way line and the southeasterly line of said parcel 98-WDV, **North 21 degrees 09 minutes 40 seconds East**, a distance of **34.79 feet** to a 5/8 inch rebar (set), with cap stamped "GPD";
3. Thence, leaving said existing right of way line, through the grantor's tract, **South 08 degrees 05 minutes 10 seconds East**, a distance of **386.22 feet** to a 5/8 inch rebar (set), with cap stamped "GPD";
4. Thence, **South 47 degrees 12 minutes 13 seconds East**, a distance of **6.21 feet** to a 5/8 inch rebar (set), with cap stamped "GPD";
5. Thence, **South 86 degrees 19 minutes 15 seconds East**, a distance of **13.55 feet** to a 5/8 inch rebar (set), with cap stamped "GPD";

EXHIBIT B

Ver. Date: 10/07/2016

Page 2 of 3

6. Thence, **South 03 degrees 40 minutes 45 seconds West**, a distance of **12.00 feet** a 5/8 inch rebar (set), with cap stamped "GPD";
7. Thence, **South 86 degrees 19 minutes 15 seconds East**, a distance of **574.00 feet** to a 5/8 inch rebar (set), with cap stamped "GPD";
8. Thence, **North 03 degrees 40 minutes 45 seconds East**, a distance of **15.00 feet** to a 5/8 inch rebar (set), with cap stamped "GPD";
9. Thence, **South 86 degrees 19 minutes 15 seconds East**, a distance of **129.00 feet** to a 5/8 inch rebar (set), with cap stamped "GPD";
10. Thence, **South 03 degrees 40 minutes 45 seconds West**, a distance of **9.00 feet** to a 5/8 inch rebar (set), with cap stamped "GPD";
11. Thence, **South 86 degrees 19 minutes 15 seconds East**, a distance of **36.00 feet** to a 5/8 inch rebar (set), with cap stamped "GPD";
12. Thence, **South 03 degrees 40 minutes 45 seconds West**, a distance of **6.00 feet** to a 5/8 inch rebar (set), with cap stamped "GPD";
13. Thence, **South 86 degrees 19 minutes 15 seconds East**, a distance of **455.99 feet** to a 5/8 inch rebar (set), with cap stamped "GPD" on the northerly line of a tract in the name of the City of Columbus, Ohio, as recorded in Instrument Number 200910270154908, and the northerly existing right of way line of Livingston Avenue;
14. Thence, along said existing right of way line, **South 03 degrees 40 minutes 45 seconds West**, a distance of **4.50 feet**, to a 5/8 inch rebar (set), with cap stamped "GPD";
15. Thence, **North 86 degrees 19 minutes 15 seconds West**, a distance of **139.67 feet** to a 5/8 inch rebar (set), with cap stamped "GPD";
16. Thence, **North 89 degrees 47 minutes 59 seconds West**, a distance of **110.21 feet** to a 5/8 inch rebar (set), with cap stamped "GPD" at the northwesterly corner of said City of Columbus tract and the northeasterly corner of a tract in the name of the City of Columbus, Ohio, as recorded in Instrument Number 200911130164093;
17. Thence, **South 89 degrees 47 minutes 23 seconds West**, a distance of **277.36 feet** to a 5/8 inch rebar (set), with cap stamped "GPD", at the southwesterly corner of said City of Columbus tract;
18. Thence, **North 86 degrees 19 minutes 15 seconds West**, a distance of **674.43 feet** to a 5/8 inch rebar (set), with cap stamped "GPD", at the southeasterly corner of a tract in the name of the City of Columbus, as recorded in Deed Book 2552, Page 304 and Deed Book 2552, Page 318;
19. Thence, continuing along said existing right of way line, **Northwesterly**, an arc distance of **34.14 feet**, along the arc of a curve deflecting to the right, having a central angle of **78 degrees 14**

EXHIBIT B

Ver. Date: 10/07/2016

Page 3 of 3

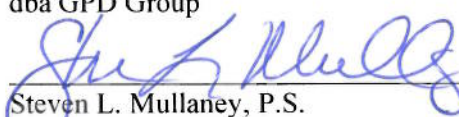
minutes 30 seconds, a radius of 25.00 feet, and a chord that bears **North 47 degrees 12 minutes 01 seconds West**, a distance of **31.55 feet**, to the **Point of Beginning**, containing a total of 0.8483 acres, of which, 0.8141 acres is contained within Franklin County Auditor's Permanent Parcel Number 010-000231-00 and the remaining 0.0342 acres is contained within Franklin County Auditor's Permanent Parcel Number 010-074749-00.

The bearings for this description are based on the bearing between Franklin County Engineer's Monuments "FRANK143" and "COC5-83" being North 77 degrees 09 minutes 24 seconds West, as resolved by GPS Observations, using Grid North, of the Ohio State Plane Coordinate System, South Zone, NAD83(1986).

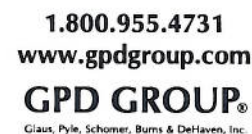
This description was prepared by GPD Group dba Glaus, Pyle, Schomer, Burns, & DeHaven, Inc. performed under the direct supervision of Steven L. Mullaney, Registered Surveyor #7900.



Glaus, Pyle, Schomer, Burns, & DeHaven, Inc.
dba GPD Group


Steven L. Mullaney, P.S.
Professional Surveyor No. 7900

10/19/2016



LEGEND:
P.O.B. = POINT OF BEGINNING
P.O.C. = POINT OF COMMENCEMENT
● I.R.S. = $\frac{5}{8}$ " REBAR (SET), WITH CAP "GPD"
* P.K.S. = P.K. NAIL SET


STEVEN L. MULLANEY, P.S. 7900

10/19/2016
DATE

GPD JOB NO. 2014260

EXHIBIT B

Ver. Date: 10/07/2016

Page 1 of 3

TEMPORARY EASEMENT 26-T 0.3718 ACRES

Situated in the State of Ohio, Franklin County, City of Columbus, Section 16, Township 5, Range 22, Refugee lands, being part of Parcels 3-A and 3-C of Children's Hospital Urban Renewal Area, Plat B-3, as recorded in Plat Book 43, Page 16, said Parcels 3-A and 3-C being in the name of Nationwide Children's Hospital, an Ohio non-profit corporation, as recorded in Instrument No. 201302280033737, and part of a tract in the name of Nationwide Children's Hospital, an Ohio non-profit corporation, f.k.a. The Children's Hospital, an Ohio non-profit corporation, as recorded in Instrument Number 201002220021091 and Instrument Number 200512090259456 and being more particularly described as follows:

Commencing, for reference, at a P.K. Nail (set) at the intersection of the centerline of right of way of East Livingston Avenue (60' Right of Way), originally dedicated as South Public Lane (49.5' Wide), as dedicated in Deed Book F, Page 332, destroyed by fire and re-platted in Plat Book 3, Page 247, also represented in Plat Book 14, Page 27 and the centerline of right of way of South Grant Avenue (66' Right of Way), originally created as Seventh Street (66' Wide), as dedicated in Deed Book F, Page 332, destroyed by fire and re-platted in Plat Book 3, Page 247, also represented in Plat Book 14, Page 27; thence, leaving said Livingston Avenue, along the centerline of right of way of said South Grant Avenue, North 08 degrees 05 minutes 10 seconds West, a distance of 44.10 feet to a point; thence, leaving said centerline and being perpendicular to, North 81 degrees 54 minutes 50 seconds East, a distance of 33.00 feet to a 5/8 inch rebar (set), with cap stamped "GPD", at the northwesterly corner of a tract in the name of the City of Columbus, as recorded in Deed Book 2552, Page 304 and Deed Book 2552, Page 318, said corner being on the easterly existing right of way line of said South Grant Avenue; thence, along said existing right of way line, North 21 degrees 09 minutes 40 seconds East, a distance of 34.79 feet to a 5/8 inch rebar (set), with cap stamped "GPD", and the **Point of Beginning** of the parcel herein described; Thence, clockwise along the following thirty two (32) courses:

1. Thence, continuing along said existing right of way line, **North 21 degrees 09 minutes 40 seconds East**, a distance of **3.12 feet** to point;
2. Thence, leaving said existing right of way line, **South 08 degrees 01 minutes 16 seconds East**, a distance of **23.08 feet** to a point;
3. Thence, **North 78 degrees 13 minutes 21 seconds East**, a distance of **15.53 feet** to a point;
4. Thence, **South 55 degrees 48 minutes 45 seconds East**, a distance of **29.73 feet** to a point;
5. Thence, **South 08 degrees 05 minutes 10 seconds East**, a distance of **40.00 feet** to a point;
6. Thence, **South 39 degrees 38 minutes 24 seconds West**, a distance of **22.97 feet** to a point;
7. Thence, **South 08 degrees 05 minutes 10 seconds East**, a distance of **303.39 feet** to a point;
8. Thence, **South 86 degrees 19 minutes 15 seconds East**, a distance of **15.38 feet** to a point;
9. Thence, **South 03 degrees 40 minutes 45 seconds West**, a distance of **12.00 feet** to a point;
10. Thence, **South 86 degrees 19 minutes 15 seconds East**, a distance of **551.00 feet** to a point;

EXHIBIT B

Ver. Date: 10/07/2016

Page 2 of 3

11. Thence, **North 46 degrees 42 minutes 15 seconds East**, a distance of **61.55 feet** to a point;
12. Thence, **South 86 degrees 19 minutes 15 seconds East**, a distance of **75.99 feet** to a point;
13. Thence, **South 40 degrees 40 minutes 12 seconds East**, a distance of **54.54 feet** to a point;
14. Thence, **South 86 degrees 19 minutes 15 seconds East**, a distance of **24.89 feet** to a point;
15. Thence, **South 59 degrees 45 minutes 21 seconds East**, a distance of **11.18 feet** to a point;
16. Thence, **South 86 degrees 19 minutes 15 seconds East**, a distance of **196.47 feet** to a point;
17. Thence, **North 83 degrees 09 minutes 20 seconds East**, a distance of **21.90 feet** to a point;
18. Thence, **South 86 degrees 19 minutes 15 seconds East**, a distance of **298.87 feet** to a point;
19. Thence, **South 03 degrees 31 minutes 16 seconds West**, a distance of **9.50 feet** to a point on the northerly existing right of way line of said Livingston Avenue ;
20. Thence, along said existing right of way line, **North 86 degrees 19 minutes 15 seconds West**, a distance of **70.92 feet** to a point;
21. Thence, along said existing right of way line, **South 03 degrees 31 minutes 16 seconds West**, a distance of **0.50 feet** to a 5/8 inch rebar (set), with cap stamped "GPD";
22. Thence, leaving said existing right of way line, **North 86 degrees 19 minutes 15 seconds West**, a distance of **455.99 feet** to a 5/8 inch rebar (set), with cap stamped "GPD";
23. Thence, **North 03 degrees 40 minutes 45 seconds East**, a distance of **6.00 feet** to a 5/8 inch rebar (set), with cap stamped "GPD";
24. Thence, **North 86 degrees 19 minutes 15 seconds West**, a distance of **36.00 feet** to a 5/8 inch rebar (set), with cap stamped "GPD";
25. Thence, **North 03 degrees 40 minutes 45 seconds East**, a distance of **9.00 feet** to a 5/8 inch rebar (set), with cap stamped "GPD";
26. Thence, **North 86 degrees 19 minutes 15 seconds West**, a distance of **129.00 feet** to a 5/8 inch rebar (set), with cap stamped "GPD";
27. Thence, **South 03 degrees 40 minutes 45 seconds West**, a distance of **15.00 feet** to a 5/8 inch rebar (set), with cap stamped "GPD";
28. Thence, **North 86 degrees 19 minutes 15 seconds West**, a distance of **574.00 feet** to a 5/8 inch

EXHIBIT B

Ver. Date: 10/07/2016

Page 3 of 3

rebar (set), with cap stamped "GPD";

29. Thence, **North 03 degrees 40 minutes 45 seconds East**, a distance of **12.00 feet** to a 5/8 inch rebar (set), with cap stamped "GPD";
30. Thence, **North 86 degrees 19 minutes 15 seconds West**, a distance of **13.55 feet** to a 5/8 inch rebar (set), with cap stamped "GPD";
31. Thence, **North 47 degrees 12 minutes 13 seconds West**, a distance of **6.21 feet** to a 5/8 inch rebar (set), with cap stamped "GPD";
32. Thence, **North 08 degrees 05 minutes 10 seconds West**, a distance of **386.22 feet** to the **Point of Beginning**, containing a total of 0.3718 acres, of which, 0.3000 acres is contained within Franklin County Auditor's Permanent Parcel Number 010-000231-00 and the remaining 0.0718 acres is contained within Franklin County Auditor's Permanent Parcel Number 010-074749-00.

The bearings for this description are based on the bearing between Franklin County Engineer's Monuments "FRANK143" and "COC5-83" being North 77 degrees 09 minutes 24 seconds West, as resolved by GPS Observations, using Grid North, of the Ohio State Plane Coordinate System, South Zone, NAD83(1986).

This description was prepared by GPD Group dba Glaus, Pyle, Schomer, Burns, & DeHaven, Inc. performed under the direct supervision of Steven L. Mullaney, Registered Surveyor #7900.



Glaus, Pyle, Schomer, Burns, & DeHaven, Inc.
dba GPD Group

Steven L. Mullaney 10/19/2016
Steven L. Mullaney, P.S.
Professional Surveyor No. 7900