

PROPOSED DETACHMENT OF 22.000± ACRES  
FROM CITY OF COLUMBUS  
TO CITY OF HILLIARD

ANNEXATION  
PLAT & DESCRIPTION  
ACCEPTABLE  
DEAN C. RINGLE, P.E., P.S.  
FRANKLIN COUNTY ENGINEER

By FMV Date 11/28/16



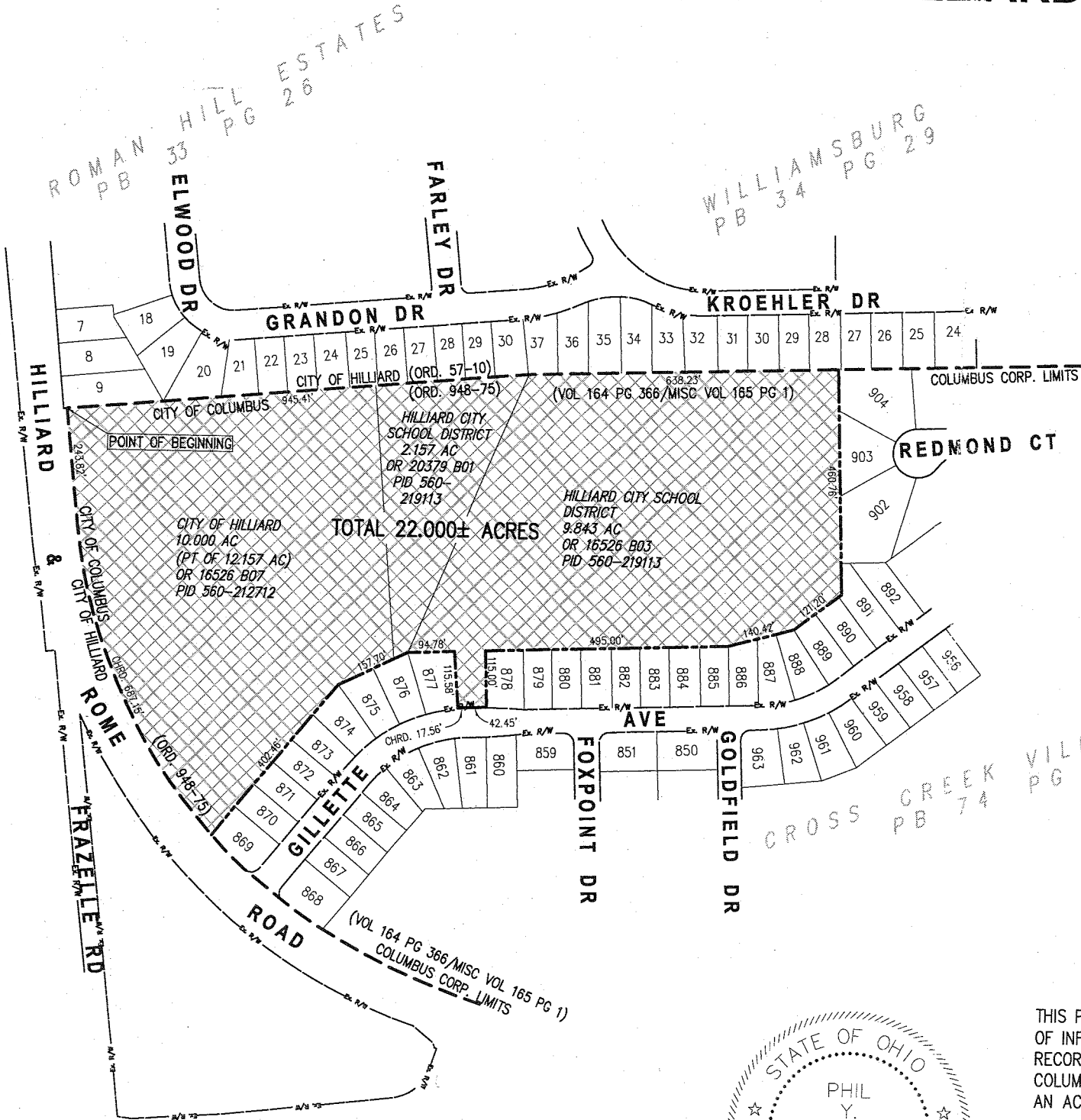
LOCATION MAP  
(NOT TO SCALE)

RECEIVED

NOV 28 2016

Franklin County Engineer  
Dean C. Ringle, P.E., P.S.

SITUATED IN THE STATE OF OHIO,  
COUNTY OF FRANKLIN, AND CITY OF  
COLUMBUS, AND BEING IN VIRGINIA  
MILITARY SURVEY No. 1335.



- AREA TO BE DETACHED
- EXISTING CORP. LINE
- PROPOSED CORP. LINE



THIS PLAT WAS PREPARED BY CITY OF COLUMBUS, DIVISION  
OF INFRASTRUCTURE MANAGEMENT FROM THE AVAILABLE  
RECORDS ON FILE WITH FRANKLIN COUNTY AND CITY OF  
COLUMBUS, AND DOES NOT CONSTITUTE INFORMATION OF  
AN ACTUAL FIELD SURVEY.

Phil Y. Shih 11/28/2016  
PHIL Y. SHIH DATE  
PS NO. 7668