

**EASEMENT VACATION**  
**0.825 ACRE**

Situated in the State of Ohio, County of Franklin, City of Columbus, Quarter Township 4, Township 1, Range 16, United States Military Lands, being on, over and across that 20.858 acre tract conveyed to Bedford Place 2, LLC by deed of record in Instrument Number 201509300138076 (all references are to the records of the Recorder's Office, Franklin County, Ohio) and being more particularly described as follows:

Beginning, for reference, at the northeasterly corner of "Waggoner Park Condominium Sixth Amendment" of record in Condominium Plat Book 112, Page 11, at an angle point in the westerly line of said 20.585 acre tract;

thence South 03° 32' 36" West, with a line common to said "Waggoner Park Condominium Sixth Amendment" and 20.585 acre tract, a distance of 115.17 feet to a point;

thence South 86° 27' 24" East, across said 20.585 acre tract, a distance of 71.17 feet to an angle point in a westerly line of Strip One of an Existing Sanitary Sewer Easement of record in Instrument Number 200607280148539, the TRUE POINT OF BEGINNING;

thence across said 20.585 acre tract, partially with the perimeter of Strip Two of said Existing Sanitary Sewer Easement and at points crossing Strip One of said Existing Sanitary Sewer Easement, the following courses and distances:

North 03° 32' 36" East, a distance of 261.62 feet to a point;

North 82° 51' 30" East, a distance of 300.94 feet to a point;

South 34° 03' 29" East, a distance of 138.84 feet to a point;

South 55° 56' 31" West, a distance of 20.00 feet to a point;

North 34° 03' 29" West, a distance of 126.56 feet to a point;

South 82° 51' 30" West, a distance of 272.08 feet to a point;

South 03° 32' 36" West, a distance of 234.54 feet to a point;

South 88° 18' 45" East, a distance of 278.21 feet to a point;

South 01° 41' 15" West, a distance of 20.00 feet to a point;

North 88° 18' 45" West, a distance of 278.53 feet to a point;

South 01° 36' 12" West, a distance of 294.09 feet to a point;

South 42° 46' 52" East, a distance of 129.06 feet to a point;

North 47° 13' 08" East, a distance of 289.00 feet to a point;

North 75° 16' 25" East, a distance of 100.32 feet to a point;

South 14° 43' 35" East, a distance of 20.00 feet to a point;

South 75° 16' 25" West, a distance of 95.32 feet to a point;

South 47° 13' 08" West, a distance of 294.00 feet to a point;

South 48° 16' 03" West, a distance of 9.62 feet to a point;

0.825 ACRE

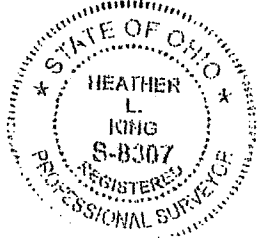
-2-

North 45° 02' 59" West, a distance of 20.03 feet to a point;

North 48° 16' 05" East, a distance of 0.42 feet to a point;

North 42° 46' 57" West, a distance of 137.04 feet to a point; and

North 01° 36' 12" East, a distance of 312.43 feet to the TRUE POINT OF BEGINNING,  
containing 0.825 acre, more or less.



EVANS, MECHWART, HAMBLETON & TILTON, INC.

*Heather L. King*  
Heather L. King  
Professional Surveyor No. 8307

10/17/16  
Date



Ernst, MacIver, Hensley & Thott, Inc.  
Engineers • Surveyors • Planners • Scientists  
5500 New Albany Road, Columbus, OH 43254  
Phone: 614.775.4300 Fax: 614.775.3446  
emht.com

**EASEMENT VACATION**  
**QUARTER TOWNSHIP 4, TOWNSHIP 1, RANGE 16**  
**UNITED STATES MILITARY LANDS**  
**CITY OF COLUMBUS, COUNTY OF FRANKLIN, STATE OF OHIO**

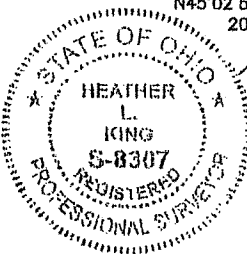
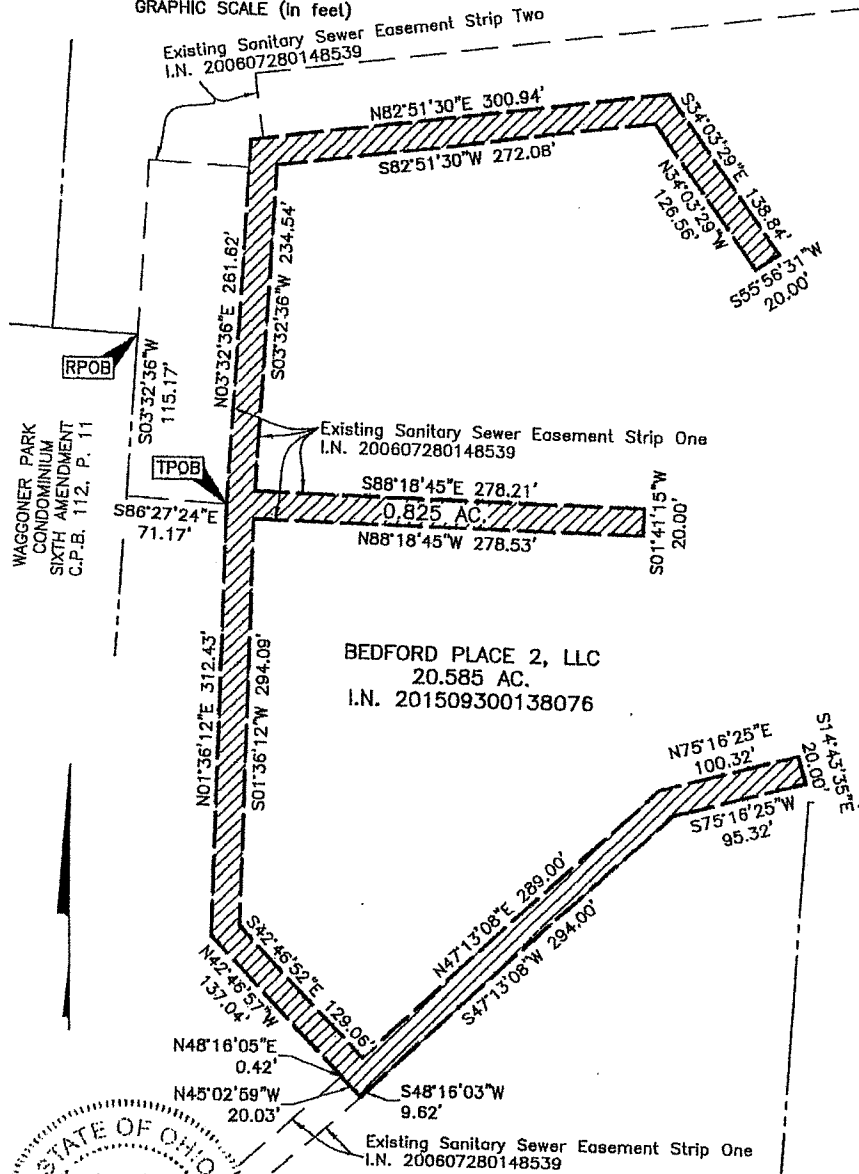
Date: October 14, 2016

Job No: 2016-0854

Scale: 1" = 100'



GRAPHIC SCALE (in feet)



By

Heather L. King  
Professional Surveyor No. 8307

Date

10/17/16

10/17/2016 1:35:43 PM last saved by HKING on 10/17/2016 1:35:43 PM plotted by KING, HEATHER on 10/17/2016 1:35:43 PM