

PROPOSED ANNEXATION OF 11.3± ACRES

FROM: TOWNSHIP OF FRANKLIN

TO: CITY OF COLUMBUS

VIRGINIA MILITARY SURVEY NO. 717

TOWNSHIP OF FRANKLIN, COUNTY OF FRANKLIN, STATE OF OHIO

AREA TO BE ANNEXED

EXISTING CITY OF COLUMBUS CORPORATION LINE

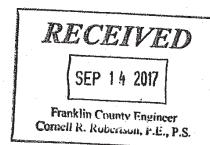
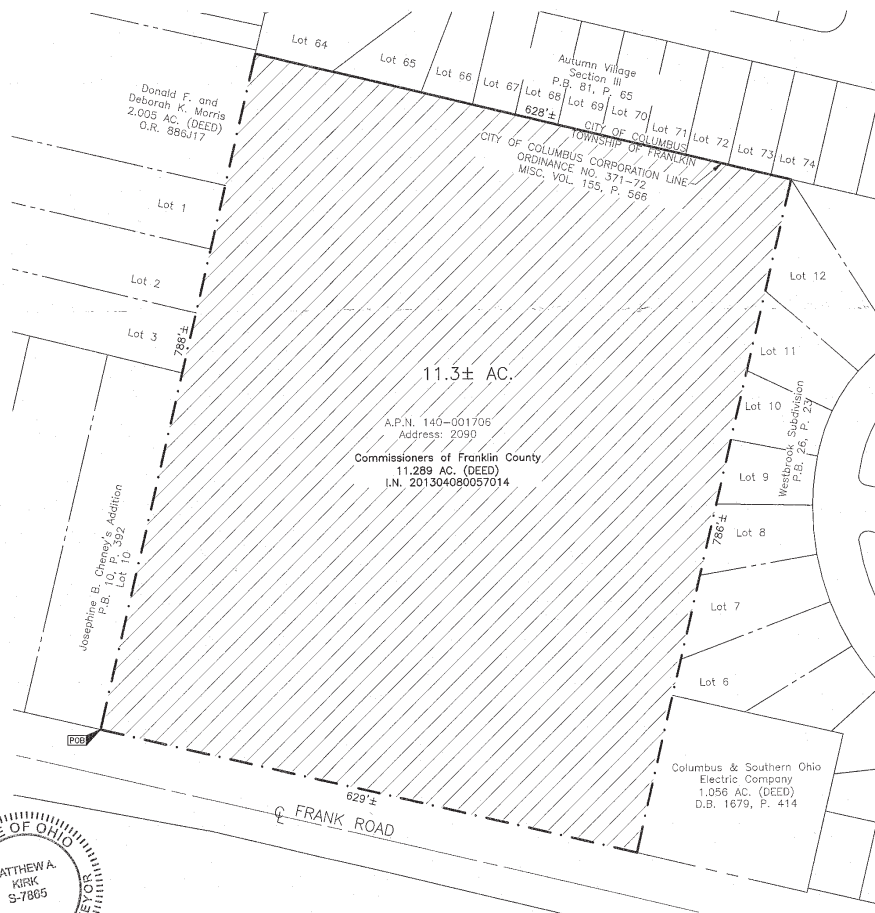
PROPOSED CITY OF COLUMBUS CORPORATION LINE

Contiguity Note:

Total perimeter of annexation area is 2831 ± feet, of which 628 ± feet is contiguous with The City of Columbus by Ordinance Number, 371-72 giving 22% perimeter contiguity.

Note:

This annexation does not create islands of unincorporated areas within the limits of the area to be annexed.

LOCATION MAP AND BACKGROUND DRAWING
Not to Scale

ANNEXATION
PLAT & DESCRIPTION
ACCEPTABLE
CORNELL R. ROBERTSON, P.E., P.S.
FRANKLIN COUNTY ENGINEER
By CR Date 9/14/17



By Matthew A. Kirk Date 9/13/17
Matthew A. Kirk
Professional Surveyor No. 7865

EMHT		Date: September 13, 2017
Evans, Mechwart, Hambleton & Tilton, Inc. Engineers • Surveyors • Planners • Scientists 5500 New Albany Road, Columbus, OH 43204 Phone: 614.775.4500 Toll free: 888.775.3648 emht.com		Scale: 1" = 100'
Job No: 2016-0356		Sheet: 1 of 1
REVISIONS		
MARK	DATE	DESCRIPTION

