

Bidder Tabulation - Bid #RFQ009712

Purchase of Lift System

Opened July 26, 2018

Bidder Name/Address	Contact Name/#	References	Experience	Warranty	Build Sheet	Literature	Manuals	Attachments	Addenda	C.C. #	Other
Bhayana Brothers	sales@bhayanabrothers.com	N	N	N	N	N		N	NA		Bidder did not submit any information. If awarded, confirmation of make and model, references, experience, training must be verified in writing that the supplier has and will provide.
Heavy Lift Systems	Mark Friess heavyliftsystems@yahoo.com	Y	N	N	Y	Y		Y	NA		If awarded, bidder needs to submit experience and warranty information. Training must be verified.
Technology International Inc	tii@tii-usa.com	N	N	N	Y	Y		Y	NA		Bidder submitted a quote which needs to be rescinded if awarded (30 day expiration). References, experience and warranty is needed. Training must be verified.

Bidder Tabulation - Bid #RFQ009712

Purchase of Lift System

Opened July 26, 2018

Vendor #	Type	Line #	Alt.	Total	Product name	Qty	Unit price	Comment	Lead Time
7143	Header		No	\$ 77,776.00					
					WPLS-190X6 PORTABLE WIRELESS				
7143	Line	10	No	\$ 67,121.00	LIFT SYSTEM or Equal	1	\$ 67,121.00		0
7143	Line	20	No	\$ 1,305.00	To include	3	\$ 435.00		0
7143	Line	30	No	\$ 2,848.00	To Include	1	\$ 2,848.00		0
7143	Line	40	No	\$ 688.00	To include	1	\$ 688.00		0
7143	Line	50	No	\$ 5,814.00	To include	2	\$ 2,907.00		0
8091	Header		No	\$ 62,970.00					
					WPLS-190X6 PORTABLE WIRELESS				
8091	Line	10	No	\$ -	LIFT SYSTEM or Equal	1	\$ -		0
					Stertil-KONI ST 1085-3 FWAe				
8091	Line	10	Yes	\$ 53,895.00	WIRELESS Mobile Columns	1	\$ 53,895.00		0
8091	Line	20	No	\$ 600.00	To include	3	\$ 200.00		0
8091	Line	30	No	\$ 2,750.00	To Include	1	\$ 2,750.00		0
8091	Line	40	No	\$ 275.00	To include	1	\$ 275.00		0
8091	Line	50	No	\$ 5,450.00	To include	2	\$ 2,725.00		0
9840	Header		No	\$ 81,514.00					
					WPLS-190X6 PORTABLE WIRELESS				
9840	Line	10	No	\$ 67,954.00	LIFT SYSTEM or Equal	1	\$ 67,954.00		0
9840	Line	20	No	\$ 1,296.00	To include	3	\$ 432.00		0
9840	Line	30	No	\$ 2,826.00	To Include	1	\$ 2,826.00		0
9840	Line	40	No	\$ 4,096.00	To include	1	\$ 4,096.00		0
9840	Line	50	No	\$ 5,342.00	To include	2	\$ 2,671.00		25
6602	Line	40	No	\$ 4,600.00	Vehicle Build Inspection	1	\$ 4,600.00		0

Heavy Lift Systems Inc

KONI

sterdil

MOBILE COLUMN LIFT

ST 1085 - ST 1100

Capacity 18,500 lbs.
or 22,000 lbs.



STERDIL
SUPERIOR SOLUTIONS BY
QUALITY PEOPLE

Superior solutions by quality people



The Stertil Group provides customized and technically advanced lifting solutions for heavy-duty customers worldwide, as well as the best possible after-sales service from factory trained local partners. These superior solutions are conceived, developed and implemented by a team of specialized professionals with unique experience. Thanks to its quality people, its total in-house production process and its international organization, Stertil-Koni is the world leader in the field of heavy-duty vehicle lifting systems.

Wireless...

Our wireless mobile column lifts with the ebright Smart Control System represent the latest in mobile column lifting technology. Using the innovative ID key, you can connect up to 32 columns in a single lift set. In most cases, the special deep cycle batteries only need to be recharged every two weeks. No time is wasted connecting up cables and the mechanic has maximum access to the vehicle, without any tripping hazards.

Wireless mobile column lifts

with **ebright Smart Control System**



TOUCH SCREEN



WIRELESS



... or cabled, it's up to you

If you predominantly work in a fixed location the cabled mobile column lifts could be the best solution for you. This setup offers the possibility to connect up to 32 columns in a single lift set. All interconnection cables are equipped with heavy-duty plugs at both ends.

Both the wireless and the cabled column lifts are equipped with a control panel on each individual column. Columns can be operated individually, in pairs or simultaneously as a complete set with the touch of a button. Each column can therefore be used at any given location.

Full color touch screen control

The revolutionary **ebright Smart Control System** combines intuitive ease of use with maximum visual information about the lifting process. The main advantages:

- 7" full color touch screen, works even when wearing gloves
- User-configured options, such as choice of language, safety warnings and scheduled maintenance notifications
- All relevant information available at a glance
- Customizable ID-Key to prevent unauthorized operation
- Wireless Mesh network for optimal connectivity



Reliable hydraulic technology

- Extended column life and minimal maintenance thanks to low-friction design
- Stringent testing before leaving the factory
- Manual lowering in case of a power outage
- Maximum protection of the cylinder and seal against damage

Adjustable pick-up forks

ST 1085 mobile column lifts have a fork length of 14", ideal for picking up a variety of vehicles, including vehicles with super single tires in a safe and secure manner. The fork length for the ST 1100 mobile column lift is 12". Both models can handle wheels with rim diameters from R12 to R22.5 with an adjustable fork that is easy to move manually and includes a mechanical lock.

Retractable wheels

Both the wireless and the cabled mobile column lifts are available with retractable wheels. This unique Stertil-Koni design is the best available on the market. This prevents high point loading on the floor and reduces the floor surface pressure by a factor of 10. The system is fast, efficient, very stable and extremely reliable.

Adjustable lowering speed

If you need to lower the vehicle more slowly for precision placement of under carriage components, this is easily done with a single touch.



Power supply

The Stertil-Koni wireless mobile column lifts operate on 24 VDC and are easily recharged by means of a 110 VAC wall receptacle. The Stertil-Koni cabled mobile column lifts operate on three phase at 208/230, 460/480 and 575 VAC, as well as single phase at 220 VAC.

Fast lifting and lowering

The ST 1085 and ST 1100 only take 94 seconds to reach its maximum lifting height of 73". This makes them one of the fastest mobile column lifts in the world.

Well thought out in all aspects



**32
MAX**

MAX 32 LINKED
COLUMNS



ADJUSTABLE
LOWERING SPEED



OVERLOAD
PROTECTION



UNIQUE
SYNCHRONIZATION
SYSTEM

Easy to move

Stertil-Koni mobile column lifts are indeed mobile, thanks to the synthetic roller wheels and hydraulic pallet jack mechanism with patented overload protection.

Safe working space

As an extra safety feature, we have also designed ample working space between the column and the vehicle. This ensures that the vehicle will not come into contact with the column in the event of sagging vehicle suspension.

Unique synchronization

The synchronization system is activated at a height difference of just 9/16". This ensures a safe and smooth lifting and lowering cycle, even in cases where the distribution of the vehicle weight is extremely uneven.

Lifetime guarantee

The innovative synthetic runner wheels within the column come with a lifetime parts guarantee.



○ High resolution 7" touch screen

○ Intuitive controls



ebright Features

SMART CONTROL SYSTEM

- High resolution 7" touch screen

- Owner/User configurable system with user ID key
 - Individual user settings for setting language and units of measure
 - Protection against unauthorized use, thanks to personalized ID key

- Maintenance notifications

- Visual display of maximum programmable lifting height

- Warning and failure information

- Operation manual available on-screen

- Tracking of specific operations and information codes

- Intuitive controls with actual data about the lift:
 - Indication for Single, All or Pair operation mode
 - Information about how many columns are in the set (up to 32 columns)
 - Actual lifting height displayed
 - Lowering speed can be manually adjusted on the touch screen
 - Battery status information
 - Customizable ID-Key to prevent unauthorized operation

- Wireless Mesh network with continuous active channel search offering optimal connectivity



Everything under control

Overview of ST 1085 – ST 1100 models	ebright wireless ST 1085-FWA ST 1100-FWA	ebright wireless ST 1085-RWA ST 1100-RWA	ebright cabled ST 1085-FSA ST 1100-FSA	ebright cabled ST 1085-RSA ST 1100-RSA
ebright Smart Control System with a control box on each individual mobile column	●	●	●	●
Touch screen with important information about the system e.g. lifting height, operation mode	●	●	●	●
Wireless Mesh network with continuous active channel search offering optimal connectivity	●	●		
These columns utilize a power outlet in the workshop and communicate with each other via interconnecting cables			●	●
Adjustable lowering speed for slow or normal lowering	●	●	●	●
Hydraulic pallet truck mechanism with patented overload protection	●	●	●	●
14"-long adjustable fork, suitable for super single tires	ST 1085	ST 1085	ST 1085	ST 1085
12"-long adjustable fork	ST 1100	ST 1100	ST 1100	ST 1100
Fixed synthetic wheels that reduce the floor surface pressure	●		●	
Retractable synthetic wheels integrated into the base frame, for 10x less floor pressure		●		●

Technical specifications

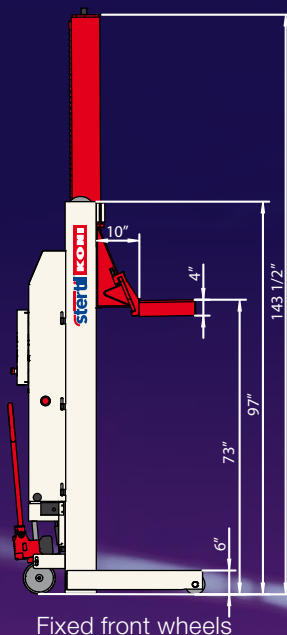
Lifting capacity:	18,500 lbs. or 22,000 lbs.
Lift system:	hydraulic lifting system with microprocessor-controlled synchronization
Lifting height:	maximum 73", automatic stop at the highest position
Lifting time:	94 seconds
Motor rating:	3 hp / 4 hp per column (Cabled/Wireless)
Weight:	1,350 lbs per column (Wireless)
Column lift height:	97"

Highest safety requirements

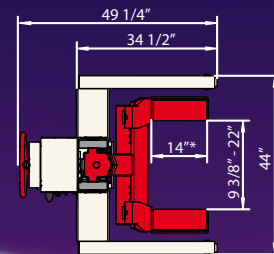
- ANSI/ALI-ALCTV certified (USA), CSA certified (Canada), CE certified (Europe)
- Independent mechanical locking system engages at 5" above finished floor. Locking pawl engaged by gravity. The locking system is always active, even when the column is turned off
- Locking profile with locking increments of just 1 3/8"
- Synchronization between the mobile lifting columns starts at a height difference of 9/16"
- Automatic overload protection
- Low voltage control panel with emergency stop
- Each column is equipped with hold-to-run push buttons
- Each individual mobile lifting column is tested prior to leaving the factory
- Splash-proof electrical system (IP 65).

Accessories & options

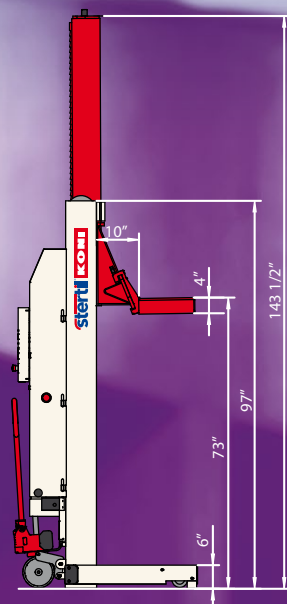
Stertil-Koni offers an extensive package of accessories & options tailored to fit your specific needs.



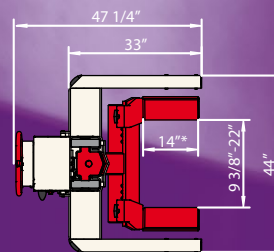
Fixed front wheels



Adjustable forks



Retractable front wheels



Adjustable forks

* For the ST 1100: 12"

More information?

For more information about the ST 1085, ST 1100, or any of Stertil-Koni's other top products, please do not hesitate to contact us. We will be pleased to assist you.

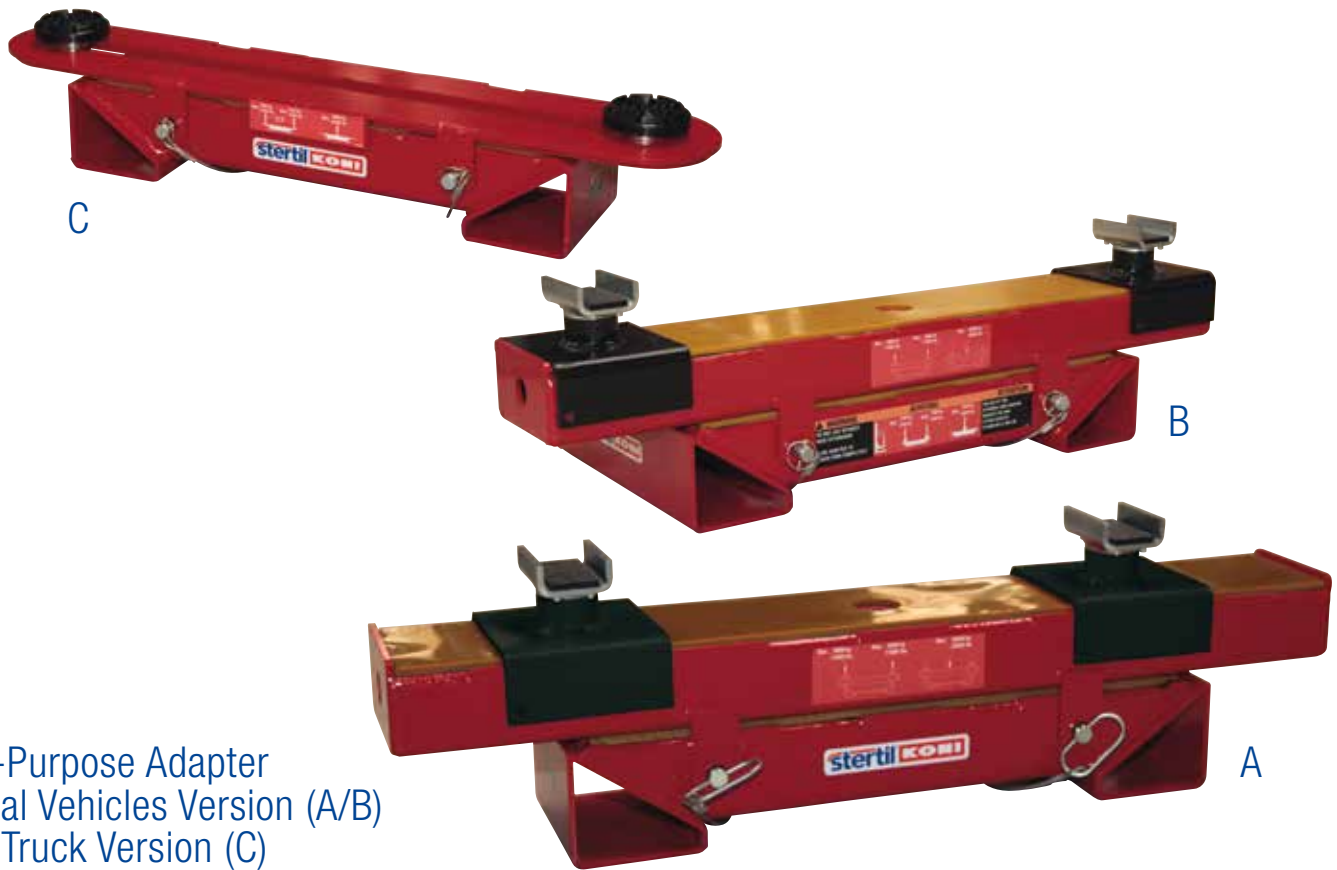


Stertil-Koni U.S.A. Inc.
200 Log Canoe Circle
Stevensville, Maryland 21666
Tel. 410-643-9001
Toll free 800-336-6637
Fax 410-643-8901
www.stertil-koni.com
lifts@sterdil-koni.com

f StertilKoniUSA @StertilKoniUSA

A member of the Stertil Group

SPECIAL VEHICLES VERSION (A/B) LIGHT TRUCK VERSION (C)



Multi-Purpose Adapter
Special Vehicles Version (A/B)
Light Truck Version (C)

- Suitable to use for lifting all kinds of vehicles with two mobile columns on the front and on the rear.
- Modular design, easy to adapt to various applications.
- Individual components can be used to create requirement specific solutions.
- A wide range of vertical height adjusters and contact adapters for various applications available.
- Version for extended reach under the vehicle is also available (B)¹.

Special Vehicles Version (A/B)

- Extra wide upper beam for optimal reach.

Light Truck Version (C)

- Extremely low pick up height.
- Flat round rubber pick up adapters that can move sideways.

¹ requires extended baseframe

Options

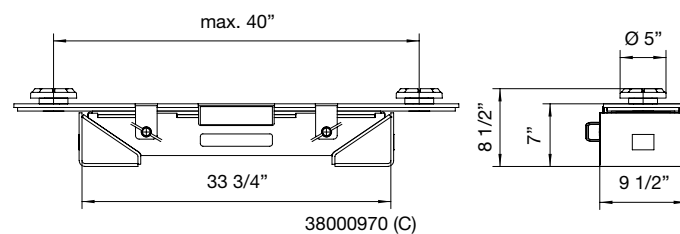
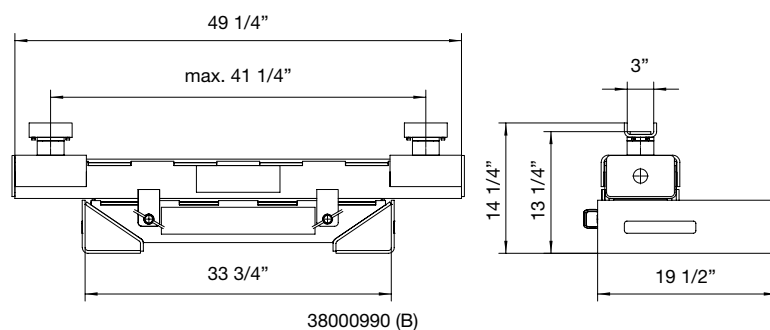
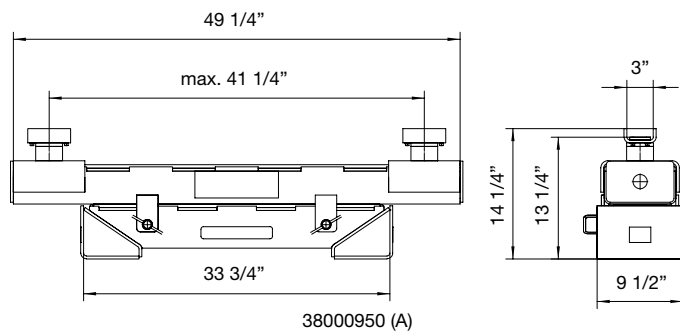


38010950

An adapter cart for easy storage and movement of 2 multi-purpose adapters is available.



A wide range of pick up adapters is available for various purposes.



Model	Special Vehicle Version (A)	Special Vehicle Version Extended (B)	Light Truck Version (C)
Article number	38000950	38000990	38000970
Suitable for columns	ST1064 ST1075 ST1085 ST1100	ST1064 ST1075 ST1085 ST1100 with extended base frame	ST1064 ST1075 ST1085 ST1100
Capacity per column*	up to 22,000 lbs	maximum of 14,500 lbs	maximum of 5,500 lbs
Weight	243 lbs	353 lbs	176 lbs

* The use of specific adapters can potentially decrease the total lifting capacity

stertil KONI

a member of the Stertil Group

Stertil-Koni U.S.A. Inc.
200 Log Canoe Circle
Stevensville, Maryland 21666
Tel. 410-643-9001
Toll free 800-336-6637
Fax 410-643-8901
lifts@stertil-koni.com

www.stertil-koni.com

f StertilKoniUSA

@StertilKoniUSA

RFQ0670453 BIDDER GUIDE

The following information is provided by the City of Columbus to assist you in navigating the formal bid procedures. This information is not to supersede or replace any of the actual bid specifications or requirements; its sole purpose is to provide information on the process. If you have any questions regarding the process, please contact the appropriate City of Columbus representative listed on the bid solicitation (for specification questions see instructions below).

Any addenda issued by the City of Columbus will be posted on this site. The City of Columbus will send notification of addenda to Bidders that have an active login id and password with Columbus Vendor Services and are registered for the commodity code(s) associated with this solicitation.

Though the notification methods above will be utilized to notify bidders of addenda it is ultimately the Bidder's responsibility to check this site for verification of any issued addenda.

IN ORDER FOR YOUR BID TO BE CONSIDERED: (CHECK ONE BELOW)

☒ **Pricing** is to be entered into the corresponding Line(s) in the body of the RFQ **AND**

☐ Description is to be entered into the Bid Packet/Specifications of the RFQ. Please print, complete, and attach your completed price listing to your bid response.

The following documents must be completed and attached to your response. Complete this checklist to confirm the items required in your bid. Failure to submit the listed documents may be cause for rejection of your bid. :

☒ Reference Pages

☒ Subcontractor Information (if applicable)

☒ Experience Documentation

☒ Literature (if applicable)

☒ Warranty

☒ Build Sheets

-

-

Please refer to Page 15 of the Vendor Services User Guide for guidance using the Attachment feature to attach references, literature, warranty information and any other documentation as needed.

EQUAL OPPORTUNITY CLAUSE

- (1) The contractor/vendor/bidder will not discriminate against any employee or applicant for employment because of race, sex, sexual orientation, gender identity or expression, color, religion, ancestry, national origin, age, disability, familial status or military status. The contractor will take affirmative action to ensure that applicants are employed, and that employees are treated during employment without regard to their race, sex, sexual orientation, gender identity or expression, color, religion, ancestry, national origin, age, disability, familial status or military status. Such action shall include, but not be limited to, the following: employment up-grading, demotion, or termination; rates of pay or other forms of compensation; and selection for training. The contractor agrees to post in conspicuous places, available to employees and applicants for employment, notices summarizing the provisions of this Equal Opportunity Clause.
- (2) The contractor will, in all solicitations or advertisements for employees placed by or on behalf of the contractor, state that the contractor is an equal opportunity employer.
- (3) It is the policy of the City of Columbus that business concerns owned and operated by M/WBEs shall have the maximum practicable opportunity to participate in the performance of contracts awarded by the city.
- (4) The contractor shall permit access to any relevant and pertinent reports and documents by the ODI director for the sole purpose of verifying compliance with this Title and ODI regulations. All such materials provided to the ODI director by the contractor shall be considered confidential.
- (5) The contractor will not obstruct or hinder the ODI director or his/her deputies, staff and assistants in the fulfillment of the duties and responsibilities imposed by Title 39 of the Columbus City Codes.
- (6) The contractor and each subcontractor will include a summary of this Equal Opportunity Clause in every subcontract. The contractor will take such action with respect to any subcontractor as is necessary as a means of enforcing the provisions of the Equal Opportunity Clause.
- (7) The contractor agrees to refrain from subcontracting any part of this contract or contract modification thereto to a contractor not holding a valid certification number as provided for in Title 39.
- (8) Failure or refusal of a contractor or subcontractor to comply with the provisions of Title 39 may result in cancellation of this contract.

**ALL CONTRACTORS MUST HOLD A VALID CONTRACT COMPLIANCE CERTIFICATION
NUMBER ISSUED BY THE OFFICE OF DIVERSITY AND INCLUSION.**

***To obtain a Contract Compliance number register at the City of Columbus Vendor
Services website: <http://vendors.columbus.gov/sites/public>***

1. Login to the City of Columbus Vendor Services Site and register with the city of Columbus. Once that is completed and approved by the purchasing office, log back in and do the following:
2. Select **Questionnaires** from the Common menu located on the left navigation bar.
3. Next select EBO Quest. (this is the contract compliance application)
4. Question 1 will be displayed; Answer question 1 and select **Forward**.
5. Proceed through the questionnaire answering each question and selecting **Forward** to continue. Once you have reached and answered the last question select **End** to submit.
6. Then the questionnaire will be received by the ODI Office, reviewed and process within 2 business days or less. For additional questions regarding this process, contact the Office of Diversity Inclusion at 614-645-4764.

City of Columbus Home Page: www.columbus.gov

INFORMATION FOR BIDDERS

SPECIAL CONDITIONS

Special conditions included in the specifications, if inconsistent with provisions included in "Information for Bidders", shall take precedence over any provisions in "Information for Bidders" to the extent inconsistent.

SUBMISSION OF PROPOSAL

Responses must be entered and submitted electronically in the body of the RFQ. Some RFQs require pricing lists or additional documents to be attached to the RFQ response electronically. In rare instances documents require submission via regular mail delivery. Refer to the "Proposal Information" section of the specifications for instructions for submission. Any unauthorized conditions, limitations or provisions attached to the proposal may render the bid nonresponsive and result in its rejection.

ACCEPTANCE AND REJECTION

This proposal submitted by the bidder to the City of Columbus will be accepted or rejected within a period of 180 days from bid opening date. The City reserves the right to waive technicalities, and to request a rebid on the required material. If more than one item, prices shall be quoted on the units requested. However, each item shall be considered a separate bid and the City reserves the right to award a contract on each item separately or on all items as a whole or any combination thereof. Bidders whose proposal is made on an "All or None" basis must clearly state such fact in the proposals.

Each RFQ issued by the City shall state that the RFQ may be cancelled and that any RFQ response may be rejected in whole or in part when it is for good cause and in the best interests of the City.

WITHDRAWAL OF PROPOSALS

Bidders may withdraw their RFQ response at any time prior to the time specified in the advertisement as the closing time for the receipt of bids. However, no bidder shall withdraw or cancel his response for a period of 180 calendar days after said advertised closing time for the receipt of proposals.

DEFAULT PROVISION

In case of default by the bidder or the contractor, the City of Columbus may procure the articles or services from other sources and hold the bidder or contractor responsible for any excess costs occasioned or incurred thereby.

SIGNATURE REQUIRED

By submitting this response electronically, bidder/proposer is affixing an electronic signature as defined by the Ohio Uniform Transactions Act. Said signature represents that he/she has the authority to bind the entity to the terms and conditions contained herein.

APPLICABLE LAWS

The Revised Code of the State of Ohio, the Charter of the City of Columbus, and all City ordinances insofar as they apply to the laws of competitive bidding, contracts, and purchases, are made a part hereof.

PRICING

Bidders are to quote firm or fixed prices for the duration of any contract which may be a result of this proposal unless otherwise noted in the specifications. In case of discrepancy in computing the amount of the bid, the **UNIT PRICE** quoted will govern.

Quotations are requested F.O.B. destination. If quoted F.O.B. Shipping Point include freight estimate and full value insurance cost.

CONTRACT AND BOND

The bidder to whom an award is made will be required to execute a written contract with the City of Columbus, Ohio within ten days after receiving such contract for execution, and if specified in the legal notice, furnish a good and approved bond conditioned upon the faithful performance of the same. The proposal, contract, proposal bond, (if applicable), and performance bond (if applicable) shall be in the form herein specified.

If, at any time during the continuance of the Contract, any surety shall, in the opinion of the Finance & Management Director, become irresponsible, then said Director shall have the right to require additional and sufficient surety or sureties. The Contractor shall furnish the surety or sureties to the satisfaction of the said Director, within ten (10) days after notice. In default thereof the default provision herein shall apply.

LIABILITY, INSURANCE, LICENSES AND PERMITS

Where bidders are required to enter or go onto City of Columbus property to deliver materials or perform work or services as a result of bid award, the bidder will assume full duty, obligation and expense of obtaining all necessary licenses, permits, and insurance when required. The bidder shall be liable for any damages or loss to the City occasioned by negligence of the bidder (or his agent) or any person the bidder has designated in the completion of his contract as a result of his bid.

Particular attention is directed to the statutory requirements of the State of Ohio relative to the licensing of corporation organized under the Laws of any other State.

TAXES

Federal and/or State Taxes are not to be included in prices quoted. The successful bidder will be furnished an exemption certificate if needed.

SAMPLES

Samples, when requested, must be furnished free of expense to the City and if not destroyed, will upon request be returned at the bidder's expense.

DELIVERY

Time will be of the essence for any orders placed as a result of this bid. Purchaser reserves the right to cancel such orders or any part thereof, without obligations if delivery is not made within the time(s) specified. Delivery shall be made during normal working hours and to the destination shown on the proposal.

QUALITY

Unless otherwise stated by the bidder, the RFQ response will be considered as being in strict accordance with the specifications outlined in the Bid Document.

References to a particular trade, manufacturer's catalog or model number are made for descriptive purposes to guide the bidder in interpreting the requirements of the City. They should not be construed as excluding proposals on other types of materials, equipment and supplies. However, the bidder, if awarded the contract, will be required to furnish the particular item referred to in the specifications or description unless a departure or substitution is clearly noted and described in the proposal.

CHANGES AND ADDENDA TO BID DOCUMENTS

Each change or addenda issued in relation to this bid document will be published on the City's Vendor Services website no less than five (5) working days prior to the scheduled bid opening date. In addition, to the extent possible, notice will be e-mailed to each person registered as having interest in the commodities selected for this bid. Total bid inquiry or specific item cancellations may be issued later than that time specified above.

WITHHOLDING OF INCOME TAX

All bidders are advised that in order for a contract to bind the City, each contract must contain the provisions found in Section 361.34 C.C.C. with regard to income taxes due or payable to the City of Columbus for wages, salaries and commissions paid to the contractor's employees as well as requiring those contractors to ensure that subcontractors withhold in a like manner.

CAMPAIGN CONTRIBUTIONS

Contractor hereby certifies the following: that it is familiar with Ohio Revised Code ("O.R.C.") Section 3517.13; that all applicable parties listed in Division (I)(3) or (J)(3) of O.R.C. Section 3517.13 are in full compliance with Divisions (I)(1) and (J)(1) of that Section; that it is eligible for this contract under the law and will remain in compliance with O.R.C. Section 3517.13 for the duration of this contract and for one year thereafter.

INFORMATION FOR BIDDERS (Continued)

IN THE EVENT OF A CONTRACT

1. Where applicable according to the specifications successful seller shall transfer and deliver to City goods which conform to the specifications.
2. The City shall accept from seller goods that conform to the specifications, and shall pay for the goods in accordance with the terms of an agreement, which may result from this proposal.
3. The risk of loss from any causality to the goods regardless of the cause of the casualty shall be on seller until the goods have been delivered at the address designated in the order and are approved after inspection by the City.
4. Seller warrants and represents that seller has absolute and good title to and full right to dispose of the goods, and that there are no liens, claims, or encumbrances of any kind against the goods, and at the time of delivery shall be free from any security interests or other lien or encumbrance.
5. If there is a breach by seller of the warranty against encumbrances granted by seller in an agreement, which may result from this proposal, the City shall have the option to cancel an agreement, which may result from this proposal.
6. Seller shall defend any action brought against the City so far as the action is based on a claim that the goods, or any part of the goods, furnished under an agreement which may result from this proposal constitutes an infringement of any patent of the United States or a trademark. Seller shall be notified promptly in writing of the action and be given authority, information, and assistance, at the expense of seller, for the defense of the action. Seller shall pay all damages and costs awarded in the action. In case the goods or a part thereof are held to constitute infringement and the use of the goods or part thereof is enjoined, seller shall, at the expense of the seller, either procure for the City the rights to continue using the goods, replace the goods or a part hereof with non-infringing goods of equal or better quality, modify the goods so that the goods become non-infringing while continuing to meet or exceed the original specifications, or retake the goods and refund the purchase prices and the transportation and installation costs of the goods at the option of the City.
7. Seller warrants that (1) the goods to be supplied pursuant to an agreement which result from this proposal are fit and sufficient for the purpose intended, (2) the goods are merchantable, of a good quality, and free from defects, whether patent or latent, in material or workmanship and (3) the goods sold to the City pursuant to an agreement which may result from this proposal conform to the specifications. The particular purpose of which the goods are required may be set forth in the specifications.
8. The benefit of any warranty made in an agreement which may result from this proposal by seller shall extend to the City and to the employees of the City, any employee of the City may bring an action directly against seller for damages or injuries sustained by the employee resulting from any breach of warranty by seller.
9. All goods ordered shall be subject to final inspection and approval at the facility of the City designated for delivery. Any goods, which do not conform to the order of the City, may be rejected by the City. The City may hold any goods rejected pending instructions from the seller or the City may return goods to seller at seller's expense.
10. If any tender or delivery by seller is rejected by the City for nonconformity, no notice of intention to cure can be effective unless it is received by the City agency within five (5) days after notice of rejection is sent to seller.
11. The liability of the City for either non-acceptance of conforming goods or repudiation of the agreement which might result from this proposal shall be limited to the difference between the market price at the time and place for tender of the goods and the unpaid sales price together with any incidental damages, but less expenses paid in consequence of the breach by the City.
12. An agreement which may result from this proposal shall not be modified or altered by any subsequent course of performance

- between parties or by additional terms contained in any subsequent documents unless said additional or differing terms are incorporated by contract modification authorized to be entered into by ordinance.
13. Contractor shall protect, indemnify and save the City harmless from and against any damage, cost, or liability, including reasonable attorneys' fees, resulting from claims for any or all injuries to persons or damage to property arising from intentional, willful or negligent acts or omissions of Contractor, its officers, employees, agents, or Subcontractors.
 14. This Contract may not be assigned or otherwise transferred to others by the Contractor without the prior written consent of the City. If this Contract is so assigned, it shall inure to the benefit of and be binding upon any respective successors and assigns (including successive, as well as immediate, successors and assignees) of the Contractor.
 15. The signatories to this Contract represent that they have the authority to bind themselves and their respective organizations to this Contract.

LOCAL CREDIT

Pursuant to City of Columbus Ordinance # 2607-2012, in determining the lowest bid for a contract the local bidder credit will not be applied.

ENVIRONMENTALLY PREFERABLE PURCHASING

In evaluating bids or offers for materials, supplies, equipment, construction and services, preference will be given to an environmentally preferable bidder who offers a product or service equal to or superior to that of a non-environmentally preferable bidder or offeror and that the environmentally preferable bid or offer does not exceed by more than 5% (up to a maximum of \$20,000) the lowest responsive and responsible and best bid from any non-environmentally preferable bid or offer. The environmentally preferable bidder will be required to demonstrate to the city agency procuring the product or service how their bid is equal to or superior to that of a non-environmentally preferable bidder. Where the bidder or offeror is local, the applicable credit for a local bidder or offeror shall be calculated first.

CERTIFICATE OF TITLE ON EQUIPMENT

If applicable to this purchase, all documents required to obtain a State of Ohio Certificate of Title **must** be delivered to:

**Fleet Management Administrator
City of Columbus/Fleet Management Div.
4211 Groves Road
Columbus, Ohio 43232**

After signature by the Fleet Management Administrator, an original title is to be delivered to the above address within three (3) days. No payment for vehicles requiring a title will be authorized by the Fleet Management Administrator until a valid title is received.

REMEDIES

All claims, counterclaims, disputes and other matters in question between the City, its agents and employees, and the Contractor arising out of or relating to this agreement or its breach will be decided in a court of competent jurisdiction within the County of Franklin, State of Ohio.

OFFERORS TERMS AND CONDITIONS

Terms and conditions, submitted with this proposal, which are contrary to City Code or Charter shall be disregarded for the purpose of any subsequent contract. The successful bidder shall be notified as to which terms and conditions, if any, have been deleted.

**City of Columbus, Department of Public Utilities
Division of Water
Wireless Lift System
Specifications**

1.0 SCOPE AND CLASSIFICATION

- 1.1 **Scope:** It is the intent of the City of Columbus, Department of Utilities, Division of Water to obtain formal bids to establish a contract for the purchase a Portable Wireless Lift System to be used Vehicle Maintenance Department.
- 1.2 **Classification:** The contract resulting from this bid proposal will provide for the purchase and delivery of one (1) Portable Wireless Lift System, accessories and training. All Offerors must document the manufacture certified reseller partnership. Bidders are required to show experience in providing this type of equipment and warranty service as detailed in these specifications.
- 1.2.1 **Bidder Experience:** The offeror must submit an outline of its experience and work history in these types of equipment and warranty service for the past five years.
- 1.2.2 **Bidder References:** The offeror shall have documented proven successful contracts from at least four customers that the offeror supports that are similar in scope, complexity, and cost to the requirements of this specification.
- 1.3 **Specification Questions:** Questions regarding this bid must be submitted on the Vendor Services portal by 11:00 am Wednesday, June 20, 2018. Responses will be posted on the RFQ on Vendor Services no later than Monday, June 25, 2018 at 4:00 pm.
- 1.4 For additional information concerning this bid, including procedures on how to submit a proposal, you must go to the City of Columbus Vendor Services web site at <http://vendors.columbus.gov/sites/public> and view this bid number.

2.0 APPLICABLE PUBLICATIONS AND STANDARDS

- 2.1 Must meet or exceed all City, State, Federal safety guidelines and standards.
- 2.2 All EPA and OSHA applicable guidelines and standards.
- 2.3 References to a particular trade or manufacturer's model number are made for descriptive purposes to guide the bidder in interpreting the requirements of the City. They should not be construed as excluding proposals on other types of materials, equipment and supplies.

3.0 REQUIREMENTS

3.1 General Information:

- 3.1.1 **Term:** The contract awarded as a result of this proposal is for a one time purchase.

**City of Columbus, Department of Public Utilities
Division of Water
Wireless Lift System
Specifications**

- 3.1.2 **Pricing:** Bidders are to bid firm or fixed prices, FOB Destination, Freight Prepaid and Allowed. All pricing must include manufacturer warranty. All manufacturer warranties will be passed on to the City of Columbus.
- 3.1.3 **Quantity:** One (1) Portable Wireless Lift System, Accessories, and Training
- 3.1.4 **Quality Standards:** The City intends to purchase new, unused and the most current model. The specifications describe a minimum acceptable requirement which a bidder has to meet. However, the bidder is allowed to exceed a minimum requirement where the excess enhances the function of the unit and which the City can accept. It is not acceptable for a bidder to exceed a maximum desired limit.
- 3.2 **Bidder Requirements:** The City will use the requirements of this section to determine if each bidder meets the minimum standards to be considered a responsible bidder.
Please print, complete and attach Reference pages and attach any supplemental pages as may be necessary to meet these requirements. **For instructions on how to attach a document to your bid, go to page 15 of the Vendor Services User Guide.**
- 3.2.1 **Experience Required:** Documentation shall include (at a minimum) information meeting the following criteria.
- 3.2.1.1 **Equipment and Warranty Capabilities:** Offerors must document, and submit in a letter attached to the bid, their capability of providing the equipment and warranty service specified herein.
- 3.2.1.2 **Manufacturer Relationship:** The offeror shall provide the history of their relationship with manufacturer(s) that will potentially be providing these types of equipment/parts and warranty service for the past five years, including but not limited to the following:
- a) Length of the relationship
 - b) Level of the relationship
 - c) A brief history of the relationship
- 3.2.2 **References:** The offeror shall have documented proven successful contracts from at least four customers that the offeror supports that are similar in scope, complexity, and cost to the requirements of this specification.
- 3.2.2.1 **Contact Information Required:** The reference contact information shall include the customer name, customer e-mail address, street address, telephone number, fax number, contact name and equipment purchase date.
- 3.2.2.2 **Equipment / Warranty Service Information:** A description of the equipment/parts provided and type of warranty service that was provided.

**City of Columbus, Department of Public Utilities
Division of Water
Wireless Lift System
Specifications**

3.2.3 **Subcontractor Information Required:** If subcontractor(s) are to be used, please list names, addresses, telephone numbers and a contact person for each subcontractor. All subcontracts must have valid contract compliance certification.

3.2.3.1 **Subcontractor Contact:** Should the offeror use subcontractors, the City shall use the offeror as the primary contact point.

3.2.4 **Specification Questions:** Questions regarding this bid including any exceptions and/or suggested changes to the requirements must be submitted on the vendor services portal by 11:00 am (local time) on Wednesday, June 20, 2018. Responses and any necessary addenda will be posted as an amendment to this RFQ on the City's Vendor Services portal no later than 4:00 p.m. (local time) on Monday, June 25, 2018. The City strongly encourages bidders to submit exceptions and/or changes during this stage of the process. Bidders submitting exceptions and/or changes before this date will greatly reduce the likelihood of their bid being rejected as non-responsive to the specifications. Bidders whom have not registered and created a new user on the City's portal <http://vendors.columbus.gov/sites/public> are strongly encouraged to do so. Notice of any pre-bid notes and addenda will only be sent to Bidders whom have registered at the site.

3.2.4.1 For further instructions on how to submit "Vendor Questions" through the Vendor Portal, please see Section "Add Vendor Questions" provided on page 16 of the City of Columbus Vendor Services User Guide.

3.2.4.2 The City has instructional videos to assist bidders at the portal. Tutorial videos are available to be viewed through You Tube or by clicking the following link:

https://www.youtube.com/channel/UCTIkkGNM7GHIITzoqQVNJIA/videos?shelf_id=0&view=0&sort=dd

3.3 Product Requirement Specifications:

3.3.1 One (1) Portable Wireless Lift System with the listed accessories. For informational purposes, these specifications are for a Gray Manufacturing WPLS-190X6 Portable Wireless Lift System. The Division of Water is willing to accept an alternate manufacturer as long as they meet and/or exceed these specifications. Indicate make, model, and year of equipment bid on proposal page. Bidders shall submit a copy of dealers build sheets with bid.

3.3.1.1 Units are to come complete with a touch screen internet enabled, control console capable of operating the entire 6 post lift system.

3.3.1.2 Consoles shall be programmed to exchange data on a dedicated wireless communication to provide constant communication between the lifting units.

**City of Columbus, Department of Public Utilities
Division of Water
Wireless Lift System
Specifications**

- 3.3.1.3 Units must be able to maintain synchronization employing digital encoders for maximum reliability.
- 3.3.1.4 Units must have self-contained 24 volt operating system with built in 110volt on-board multi-stage charging systems that plug into ordinary 110 outlets for recharging the power system.
- 3.3.1.5 Each Units minimum capacity will be 19,000 lbs. each.
- 3.3.1.6 Units will have adjustable carriages to handle truck to automotive tire sizes.
- 3.3.1.7 Each lift is to provide an minimum work height of 81”.
- 3.3.1.8 Units will include balanced, spring loaded wheel components for easy moving.
- 3.3.1.9 Units will contain precise control integral holding valves
- 3.3.1.10 The successful bidder shall provide a minimum of 4 hours of operation and mechanical training covering the operation and maintenance of the mowers. The operation and mechanical training shall take place at the delivery location and be able to accommodate up to 15 personnel.
- 3.3.1.10.1 The City of Columbus reserves the right to video record the training sessions for training/retraining its employees.
- 3.3.2 **Additional equipment**
 - 3.3.2.1 3 Sets of Light Kits for WPLS Lifts.
 - 3.3.2.1.1 The successful bidder must deliver the unit with the light kits installed
 - 3.3.2.2 1 CB-32 Cross Beam Adapter
 - 3.3.2.3 1 Set of CB-32 15" Height Extensions
 - 3.3.2.4 2 Sets of EL-90A End lift adapter kits

4.0 SAMPLING, INSPECTION AND TEST PROCEDURES

- 4.1 **Demonstration:** The City reserves the right to require a demonstration of any equipment prior to award of the bid. Such demonstration shall be conducted, at the sole discretion of the City, either on roads in the City of Columbus, or in another municipal setting in Franklin County, Ohio where such equipment is in daily operation. All costs associated with such demonstration are to be the responsibility of the supplier. All

**City of Columbus, Department of Public Utilities
Division of Water
Wireless Lift System
Specifications**

demonstrations shall be concluded within five (5) working days after notification of demo request. Failure to comply may be used as a basis for rejection of the bid.

- 4.2 **Inspection:** All parts shall be thoroughly inspected upon delivery by an authorized representative of the Department of Public Utilities, Division of Water for verification of conformance to the specifications. Any damaged, defective, or substandard item shall be promptly removed by the supplier, and replaced at no cost to the City of Columbus. The supplier will be responsible for all shipping costs.

5.0 ORDERING, DELIVERY and INVOICING

- 5.1 **Ordering Procedure:** A written purchase order will be established by the Director of Finance and Management. The Purchase Order will have the delivery information and invoice information.

- 5.2 **Delivery days after Order:** Bidder shall insert in the "Discount" tab of the bid the Lead Time expressed as the number of calendar days after receipt of order that delivery will be made. Vendors shall state actual delivery time in calendar days in the space provided under Delivery/Payment Terms. Delivery time may be a factor in determining award of bid. Failure to deliver in the days proposed may lead the City to consider the contract holder in partial or full breach of the contract. In the case of such breach, the City reserves the right to pursue all remedies and actions available under this contract and relevant law.

- 5.2.1 **Delivery Location:** The equipment will be delivered FOB Destination Freight Prepaid and Allowed (Seller Bears All Freight Costs) to:

City of Columbus, Department of Public Utilities
Division of Water
910 Dublin Rd
Columbus, OH 43215

- 5.2.2 The City of Columbus requires no less than twenty-four (24) hours advance notice before the actual delivery. Delivery can be made Monday through Friday 7:00 AM – 2:30 PM (local time), except on a City of Columbus recognized holiday. City of Columbus personnel will uncrate any carton packaging. The contact information and delivery location will be included on the Purchase Order.
- 5.3 **Packaging:** All items must be packaged in the minimum standard packing material designed to protect against damage during shipment. Note the use of Environmentally Friendly materials is encouraged.
- 5.4 **Invoicing:** Each invoice shall show the City Purchase Order number, a brief description identifying the item, the unit price, and the total amount. The invoice amount must exactly match the purchase order amount in accordance with the bid proposal. All Invoices should be mailed to the address on the Purchase Order to ensure proper payment

**City of Columbus, Department of Public Utilities
Division of Water
Wireless Lift System
Specifications**

6.0 NOTES

6.1 Online Bidding Instructions: Bidders are requested to quote firm or fixed prices on the corresponding line item(s) only. Within the "Comment" section of each line bidders are requested to provide the make, model and manufactured year of the unit quoted. It is understood that all parts that may not be specifically mentioned must be included to make the unit operational and complete.

6.1.1 Alternates: Bids will be considered on units complying with the specifications. All alternates must be detailed in an attached letter to bid. Explanations must fully state what is to be furnished. All alternates must exceed specifications. The City of Columbus reserves the right to determine whether any proposed alternates are within the specifications.

6.1.1.1 Attachments: For instruction on attaching documents to online quotes, please see page 15 of the "City of Columbus Vendor Services User Guide", made available through the Vendor Portal.

6.2 Warranty: The equipment specified herein shall be covered by the manufacturer's warranty at no additional charge. Bidders shall submit warranty on a separate sheet attached to the bid proposal.

6.2.1 Warranty Period: The warranty period shall be a minimum of 12 months at no additional charge. Bidders shall submit copies of the warranty as an attachment with the bid proposal.

6.2.2 Delayed Warranty: Bidder shall submit on a separate sheet attached to the bid a procedure for delayed warranty for starting dates to cover the interval between time of delivery of the complete vehicle and the actual date that the equipment is placed in service by the City. This delayed time period will cover inspection, operator and mechanic training, etc.

6.2.3 Fully Franchised: The bidder shall contract with a warranty service provider whose primary business is the sale and/or repair of the equipment proposed in this bid proposal. Warranty service must be performed by a franchised OEM dealer that is authorized by the manufacturer(s) to perform warranty service. The warranty work shall be the responsibility of the successful bidder and the successful bidder shall coordinate all warranty work. Any defects shall be corrected and the equipment returned to the City within ten (10) days for written (mail, email or fax) notification of the service need. Any defects shall be corrected without cost to the City of Columbus. Under no circumstances shall the "out of operation" time of the equipment exceed ninety (90) days. Warranty work is not deemed complete until Fleet Management has accepted work as satisfactory.

6.2.4 Warranty Service Logistics: Cost of transport of equipment for warranty purposes shall be the responsibility of the successful bidder. The successful bidder will be required to pick-up the equipment and transport it to the warranty service location. At the successful bidder's discretion, the equipment

**City of Columbus, Department of Public Utilities
Division of Water
Wireless Lift System
Specifications**

may be transported (not towed) to a location within Franklin or contiguous counties. For a warranty service location outside of a contiguous county, the equipment must be transported (not towed).

6.3 Literature:

- 6.3.1 To aid in the evaluation of bids, all bidders are to furnish with this bid current published literature and Dealer's specifications that best explains the unit offered, model and identification of the options that meet or exceed the specifications. Published literature shall include pictures and complete descriptive matter.
- 6.3.2 Bidders shall submit a copy of dealer's build sheets with bid.

6.4 Manuals:

- 6.4.1 The successful bidder shall supply two (2) copies of all parts lists, service, maintenance, and operation manuals upon delivery of the equipment to the City of Columbus. The City of Columbus would prefer that all parts and service manuals be supplied on CD-ROM.

6.5 Insurance Requirements and Workers Compensation: Successful Bidder is required to provide the following before final execution of the contract:

- 6.5.1 **Liability Insurance:** The contractor shall take out and maintain during the life of the contract, such Public Liability (bodily injury and property damage) Insurance as shall protect him from claims from damages for personal injury, including accidental death, as well as from claims for property damage which may arise from operations under the contract, whether such operation be by himself or any subcontractor or by anyone directly or indirectly employed by either of them. Such insurance policy shall include the city as named insured. The Contractor shall maintain coverage of the types and in the amounts specified below. Submitting a certificate of insurance shall evidence proof of such insurance coverage. A contractor's "umbrella" type policy with limits specified below may be submitted for this requirement, with the City as named insured.

The amount of such insurance shall be as follows:

Bodily Injury Liability	
Each Person	\$ 1,000,000.00
Each Accident	\$ 1,000,000.00
Property Damage Liability	
Each Person	\$ 1,000,000.00
Each Accident	\$ 1,000,000.00

Such insurance shall remain in full force and effect during the life of the contract. Insurance may not be changed or cancelled unless the insured and the City are notified in writing not less than thirty days prior to such change or cancellation. If

**City of Columbus, Department of Public Utilities
Division of Water
Wireless Lift System
Specifications**

any part of the contract is sublet, the Contractor is responsible for the part sublet being adequately covered by insurance herein above described.

Contractor assumes all risk of loss and damage to the equipment provided unless loss or damage occurs at the time the operator and equipment are being operated for the purpose designated by the city and such loss or damages is caused by an act of the city or its employee which constitutes gross negligence or wanton misconduct.

- 6.5.2 **Workers Compensation:** The successful contractor obtain and maintain during the life of this contract, adequate worker's compensation insurance for all his employees employed at the site of the project and, in case any work is sublet, the contractor shall require the subcontractor similarly to provide worker's compensation insurance for the latter's employees, unless such employees are covered by the protection afforded by the contractor. The successful contractor shall furnish one (1) copy of the worker's compensation certificate showing that the contractor has paid his industrial insurance premium.

- 6.7 **Tax Credits, Grants, and Refunds:** Any and all grants, incentives, credits, rebates, discounts and/or refunds received by the manufacturer or dealer based on emissions reductions or the CNG fuel status of these vehicles will be identified and deducted from the cost of the vehicles provided to the City of Columbus, including, but not limited to, any tax credits that may be transferred from the City, as a tax exempt entity, to the Seller.

Correspondences: During the bidding and evaluation process Offerors are strictly prohibited from communicating with any City employees or officers regarding the solicitation. Any communication from the vendor to the City should be limited to only the contact(s) listed in the RFQ and/or below. A violation of this section on the part of the Offeror may lead to disqualification.

All correspondences regarding this bid should be sent via email to rslaughter@columbus.gov .

**City of Columbus, Department of Public Utilities
Division of Water
Wireless Lift System**

REFERENCES

The bidder must briefly document its capabilities and submit an outline of its experience and work history in the supply, deliver, and set-up a Wireless Lift System for the past five years by submitting the contact information of professional references from four (4) separate contracts. References should consist of projects of a similar scope, complexity, and cost.

Business Name: AEP - Mutiple locations in Ohio Tel #. 614/856-2743

Address: _____

E-mail Address: Dlfry@aep.com Fax #. _____ - _____

Contact: Dan Fry - Fleet supervisor Work performed from _____ to _____

Work Performed: Multiple sets of ST 1085 FWAe - WIRELESS mobile columns

Business Name: ODOT - Multiple Locations in the state Tel #. _____ - _____

Address: _____

E-mail Address: _____ Fax #. _____ - _____

Contact: _____ Work performed from _____ to _____

Work Performed: District offices and county garages have WIRELESS mobile columns.

Currently have a Blanket PO for 14 Sets of WIRELESS mobile columns and accessories
with ODOT.

Business Name: Ohio Cat - Multiple Locations Tel #. 614/851-3503

Address:

E-mail Address: Jwhaley@ohiocat.com Fax #.

Contact: Jeff Whaley Work performed from to

Work Performed: Wireless & 3-Phase mobile columns

Business Name: Fallsway Equipment Tel #. 330/633-6000

Address: _____

E-mail Address: mmanus@fallsway.com Fax #. _____

Contact: Mike Manus Work performed from _____ to _____

Work Performed: Wireless & 3-phase Mobile columns

SUBCONTRACTORS INFORMATION (IF APPLICABLE)

City of Columbus, Department of Public Utilities
Division of Water
Wireless Lift System

Business Name: _____ Tel #. _____ - _____

Address: _____

E-mail Address: _____ Fax #. _____ - _____

Contact: _____ Work to be performed from _____ to _____

Work To Be Performed: _____

Business Name: _____ Tel #. _____ - _____

Address: _____

E-mail Address: _____ Fax #. _____ - _____

Contact: _____ Work to be performed from _____ to _____

Work To Be Performed: _____

SPECIAL VEHICLES VERSION (A/B) LIGHT TRUCK VERSION (C)



Multi-Purpose Adapter
Special Vehicles Version (A/B)
Light Truck Version (C)

- Suitable to use for lifting all kinds of vehicles with two mobile columns on the front and on the rear.
- Modular design, easy to adapt to various applications.
- Individual components can be used to create requirement specific solutions.
- A wide range of vertical height adjusters and contact adapters for various applications available.
- Version for extended reach under the vehicle is also available (B)¹.

Special Vehicles Version (A/B)

- Extra wide upper beam for optimal reach.

Light Truck Version (C)

- Extremely low pick up height.
- Flat round rubber pick up adapters that can move sideways.

¹ requires extended baseframe

Options

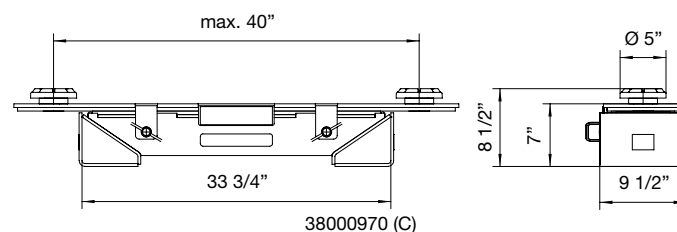
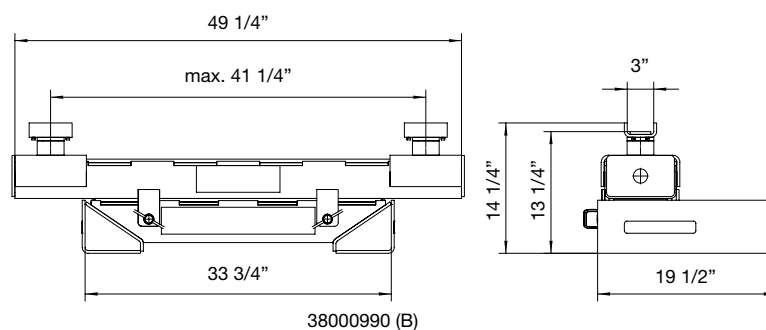
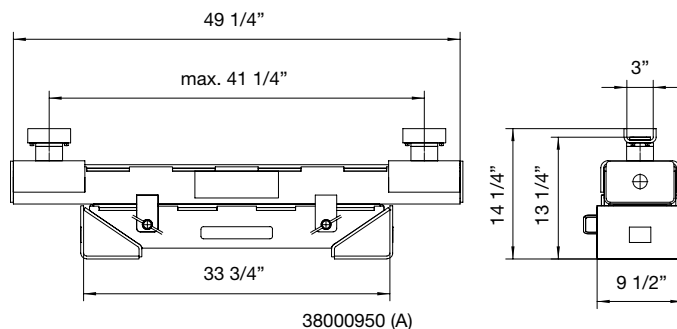


38010950

An adapter cart for easy storage and movement of 2 multi-purpose adapters is available.



A wide range of pick up adapters is available for various purposes.



Model	Special Vehicle Version (A)	Special Vehicle Version Extended (B)	Light Truck Version (C)
Article number	38000950	38000990	38000970
Suitable for columns	ST1064 ST1075 ST1085 ST1100	ST1064 ST1075 ST1085 ST1100 with extended base frame	ST1064 ST1075 ST1085 ST1100
Capacity per column*	up to 22,000 lbs	maximum of 14,500 lbs	maximum of 5,500 lbs
Weight	243 lbs	353 lbs	176 lbs

* The use of specific adapters can potentially decrease the total lifting capacity

stertil KONI

a member of the Stertil Group

Stertil-Koni U.S.A. Inc.
200 Log Canoe Circle
Stevensville, Maryland 21666
Tel. 410-643-9001
Toll free 800-336-6637
Fax 410-643-8901
lifts@stertil-koni.com

www.stertil-koni.com

f StertilKoniUSA

@StertilKoniUSA

KONI

ster til



MOBILE COLUMN LIFT

ST 1085 - ST 1100

Capacity 18,500 lbs.
or 22,000 lbs.



STER TIL
SUPERIOR SOLUTIONS BY
QUALITY PEOPLE

Superior solutions by quality people



The Stertil Group provides customized and technically advanced lifting solutions for heavy-duty customers worldwide, as well as the best possible after-sales service from factory trained local partners. These superior solutions are conceived, developed and implemented by a team of specialized professionals with unique experience. Thanks to its quality people, its total in-house production process and its international organization, Stertil-Koni is the world leader in the field of heavy-duty vehicle lifting systems.

Wireless...

Our wireless mobile column lifts with the ebright Smart Control System represent the latest in mobile column lifting technology. Using the innovative ID key, you can connect up to 32 columns in a single lift set. In most cases, the special deep cycle batteries only need to be recharged every two weeks. No time is wasted connecting up cables and the mechanic has maximum access to the vehicle, without any tripping hazards.

Wireless mobile column lifts

with **ebright Smart Control System**



TOUCH SCREEN



WIRELESS



... or cabled, it's up to you

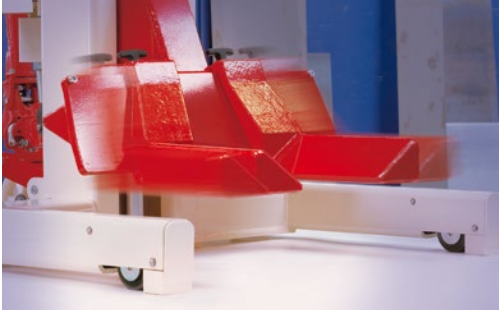
If you predominantly work in a fixed location the cabled mobile column lifts could be the best solution for you. This setup offers the possibility to connect up to 32 columns in a single lift set. All interconnection cables are equipped with heavy-duty plugs at both ends.

Both the wireless and the cabled column lifts are equipped with a control panel on each individual column. Columns can be operated individually, in pairs or simultaneously as a complete set with the touch of a button. Each column can therefore be used at any given location.

Full color touch screen control

The revolutionary **ebright Smart Control System** combines intuitive ease of use with maximum visual information about the lifting process. The main advantages:

- 7" full color touch screen, works even when wearing gloves
- User-configured options, such as choice of language, safety warnings and scheduled maintenance notifications
- All relevant information available at a glance
- Customizable ID-Key to prevent unauthorized operation
- Wireless Mesh network for optimal connectivity



Reliable hydraulic technology

- Extended column life and minimal maintenance thanks to low-friction design
- Stringent testing before leaving the factory
- Manual lowering in case of a power outage
- Maximum protection of the cylinder and seal against damage

Adjustable pick-up forks

ST 1085 mobile column lifts have a fork length of 14", ideal for picking up a variety of vehicles, including vehicles with super single tires in a safe and secure manner. The fork length for the ST 1100 mobile column lift is 12". Both models can handle wheels with rim diameters from R12 to R22.5 with an adjustable fork that is easy to move manually and includes a mechanical lock.

Retractable wheels

Both the wireless and the cabled mobile column lifts are available with retractable wheels. This unique Stertil-Koni design is the best available on the market. This prevents high point loading on the floor and reduces the floor surface pressure by a factor of 10. The system is fast, efficient, very stable and extremely reliable.

Adjustable lowering speed

If you need to lower the vehicle more slowly for precision placement of under carriage components, this is easily done with a single touch.



Power supply

The Stertil-Koni wireless mobile column lifts operate on 24 VDC and are easily recharged by means of a 110 VAC wall receptacle. The Stertil-Koni cabled mobile column lifts operate on three phase at 208/230, 460/480 and 575 VAC, as well as single phase at 220 VAC.

Fast lifting and lowering

The ST 1085 and ST 1100 only take 94 seconds to reach its maximum lifting height of 73". This makes them one of the fastest mobile column lifts in the world.

Well thought out in all aspects



**32
MAX**

MAX 32 LINKED
COLUMNS



ADJUSTABLE
LOWERING SPEED



OVERLOAD
PROTECTION



UNIQUE
SYNCHRONIZATION
SYSTEM

Easy to move

Stertil-Koni mobile column lifts are indeed mobile, thanks to the synthetic roller wheels and hydraulic pallet jack mechanism with patented overload protection.

Safe working space

As an extra safety feature, we have also designed ample working space between the column and the vehicle. This ensures that the vehicle will not come into contact with the column in the event of sagging vehicle suspension.

Unique synchronization

The synchronization system is activated at a height difference of just 9/16". This ensures a safe and smooth lifting and lowering cycle, even in cases where the distribution of the vehicle weight is extremely uneven.

Lifetime guarantee

The innovative synthetic runner wheels within the column come with a lifetime parts guarantee.



○ High resolution
7" touch screen

○ Intuitive controls



ebright Features

SMART CONTROL SYSTEM

- High resolution 7" touch screen
- Owner/User configurable system with user ID key
 - Individual user settings for setting language and units of measure
 - Protection against unauthorized use, thanks to personalized ID key
- Maintenance notifications
- Visual display of maximum programmable lifting height
- Warning and failure information
- Operation manual available on-screen

- Tracking of specific operations and information codes
- Intuitive controls with actual data about the lift:
 - Indication for Single, All or Pair operation mode
 - Information about how many columns are in the set (up to 32 columns)
 - Actual lifting height displayed
 - Lowering speed can be manually adjusted on the touch screen
 - Battery status information
 - Customizable ID-Key to prevent unauthorized operation
- Wireless Mesh network with continuous active channel search offering optimal connectivity



Everything under control

Overview of ST 1085 – ST 1100 models	ebright wireless ST 1085-FWA ST 1100-FWA	ebright wireless ST 1085-RWA ST 1100-RWA	ebright cabled ST 1085-FSA ST 1100-FSA	ebright cabled ST 1085-RSA ST 1100-RSA
ebright Smart Control System with a control box on each individual mobile column	●	●	●	●
Touch screen with important information about the system e.g. lifting height, operation mode	●	●	●	●
Wireless Mesh network with continuous active channel search offering optimal connectivity	●	●		
These columns utilize a power outlet in the workshop and communicate with each other via interconnecting cables			●	●
Adjustable lowering speed for slow or normal lowering	●	●	●	●
Hydraulic pallet truck mechanism with patented overload protection	●	●	●	●
14"-long adjustable fork, suitable for super single tires	ST 1085	ST 1085	ST 1085	ST 1085
12"-long adjustable fork	ST 1100	ST 1100	ST 1100	ST 1100
Fixed synthetic wheels that reduce the floor surface pressure	●		●	
Retractable synthetic wheels integrated into the base frame, for 10x less floor pressure		●		●

Technical specifications

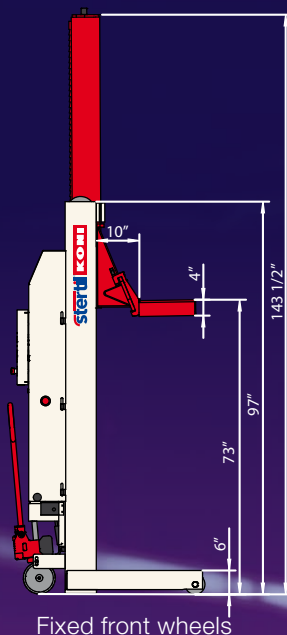
Lifting capacity:	18,500 lbs. or 22,000 lbs.
Lift system:	hydraulic lifting system with microprocessor-controlled synchronization
Lifting height:	maximum 73", automatic stop at the highest position
Lifting time:	94 seconds
Motor rating:	3 hp / 4 hp per column (Cabled/Wireless)
Weight:	1,350 lbs per column (Wireless)
Column lift height:	97"

Highest safety requirements

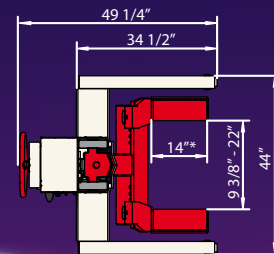
- ANSI/ALI-ALCTV certified (USA), CSA certified (Canada), CE certified (Europe)
- Independent mechanical locking system engages at 5" above finished floor. Locking pawl engaged by gravity. The locking system is always active, even when the column is turned off
- Locking profile with locking increments of just 1 3/8"
- Synchronization between the mobile lifting columns starts at a height difference of 9/16"
- Automatic overload protection
- Low voltage control panel with emergency stop
- Each column is equipped with hold-to-run push buttons
- Each individual mobile lifting column is tested prior to leaving the factory
- Splash-proof electrical system (IP 65).

Accessories & options

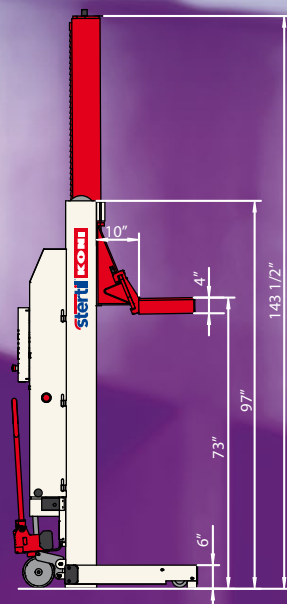
Stertil-Koni offers an extensive package of accessories & options tailored to fit your specific needs.



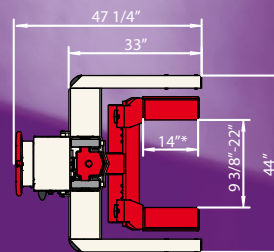
Fixed front wheels



Adjustable forks



Retractable front wheels



Adjustable forks

* For the ST 1100: 12"

More information?

For more information about the ST 1085, ST 1100, or any of Stertil-Koni's other top products, please do not hesitate to contact us. We will be pleased to assist you.



Stertil-Koni U.S.A. Inc.
200 Log Canoe Circle
Stevensville, Maryland 21666
Tel. 410-643-9001
Toll free 800-336-6637
Fax 410-643-8901
www.stertil-koni.com
lifts@stertil-koni.com

f StertilKoniUSA @StertilKoniUSA

A member of the Stertil Group



Technology International Inc



Technology International, Inc.
1349 South International Pkwy, Suite 2411
Lake Mary, FL 32746
Tel: (407) 359-2373
Fax: (407) 359-2372
E-mail: tii@tii-usa.com
Website: www.tii-usa.com

Equipment Proposal

Title: Lift system
Case ID #: RFQ009712
Agency: City of Columbus
Our Ref: TII/OH/0718/9333
Date: 07/25/2018

In response to your quote request for Lift system, Technology International, Inc. is pleased to submit the following for consideration:

ITEM NO.	QTY	DESCRIPTION/ MODEL NO.	UNIT PRICE	EXTD. PRICE
1	1	Gray Model # WPLS-190X6 Portable Wireless Lift System	\$67,954.00	\$67,954.00
2	3	Light Kit	\$432.00	\$1,296.00
3	1	Gray Model # CB-32	\$2,826.00	\$2,826.00
4	1	Gray Model # WPLSCB-32 15" "Height Extensor	\$4,096.00	\$4,096.00
5	2	Gray Model # EL90A	\$2,671.00	\$5,342.00
See attached data sheets				
<u>Total price for all above.....\$81,514.00</u>				

Exclusions: Any item not included in our offer.

Warranty: Manufacturer's Standard warranty applies.

Delivery:

- Estimated delivery is **10-25 DAYS** ARO from customer and approved submittal
- All delivery dates quoted are tentative, based on current factory production schedule, subject to confirmation at time of order
- Submittal data, if applicable, will be provided for approval ARO

Freight: Freight included to Columbus, OH 43215

Payment Terms: 1/4% 10 days; NET 30

Validity of Quote: This quotation is valid for 30 days from date of quote.

***** Notes:**

- Quoted price is not available on a line item basis. This is an offer for a lump sum contract.
- Confirmation of price required prior to placing order of quantities other than listed.

Technology International, Inc. Corporate data:

We are a small business and our Tax Payer Identification Number (TIN): 650342335. The above price quoted does not include any sales, excise or similar taxes. If applicable agency must accrue and remit it directly."

We trust that this proposal will meet your requirements and we look forward to hearing from you.

If you have any questions or need more information, please contact us by phone at 407-359-2373, fax at 407-359-2372 or email us at tii@tii-usa.com

Respectfully submitted,



Rifat Habib
Business Development Exec.
Technology International, Inc.



PATENTED WIRELESS

Improve productivity and flexibility

Wireless feature enables technicians to:



WIRELESS CONTROL SYSTEM:

Each lifting unit comes complete with a control console capable of operating the entire lift system. The control console is programmed to exchange data on a dedicated wireless communication channel that is licensed to meet FCC and IC requirements by a third party independent testing laboratory. This proven and secure digital wireless system provides constant communication between the lifting units.

SELF CONTAINED DC POWER SOURCE PROVIDES GREATER SHOP FLEXIBILITY:

- No high voltage requirements
- Eliminates the hidden up-front power installation costs
- Allows technicians to take the lifting system to the job
- No worries about interrupted power service
- A 110 volt on-board multi-stage charging system is built in to each unit. Simply plug in to an ordinary 110 outlet to recharge the power system. The charger is rated at an input of 100-230VAC 4 Amp.



FEATURES



Lift & Steer Handle



200 Channels



Red Light / Green Light System

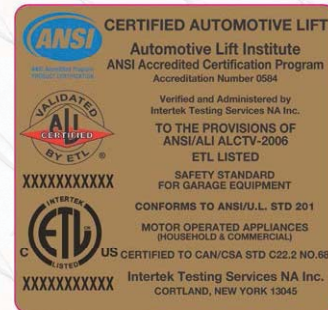
PORTABLE LIFT SYSTEM

- Get set-up FASTER... • Get the vehicle up FASTER... • Get the job done FASTER!



FEATURES INCLUDE:

- The Patented Gray Wireless Portable Lift System provides your technicians an average work height of 81 inches free-and-clear access under the vehicle. No cables to connect, navigate around, roll over or replace.
- 200 channel capable operating system
- Moving and aligning individual lift units is made easy by virtue of the precise balanced design, spring loaded wheel components and the versatile lift and steer handle design.
- The system maintains synchronization employing digital encoders to ensure maximum reliability.
- Integral holding valve provides precise control
- ALI Certified
- Automatic down stops with visual confirmation system
- Single and paired operation with auto-return feature
- Computer controlled adapter settings
- Park feature
- Auto slow descent for placing vehicles on stands
- Patent pending touchscreen controls, displays lifting height and weight
- 10" screen wifi enabled computer operates columns





Canadian Patent number
2,406,340
Adj. Carriage 8,282,075

• Heavy Duty Transmission Jack • Clutch Jack/Component Jack • Wheel Dolly



Variety of
Storage
Covers
Available



HR-3000



9-THR



7-THR



WDH-12



10-THR



HTJC-2000