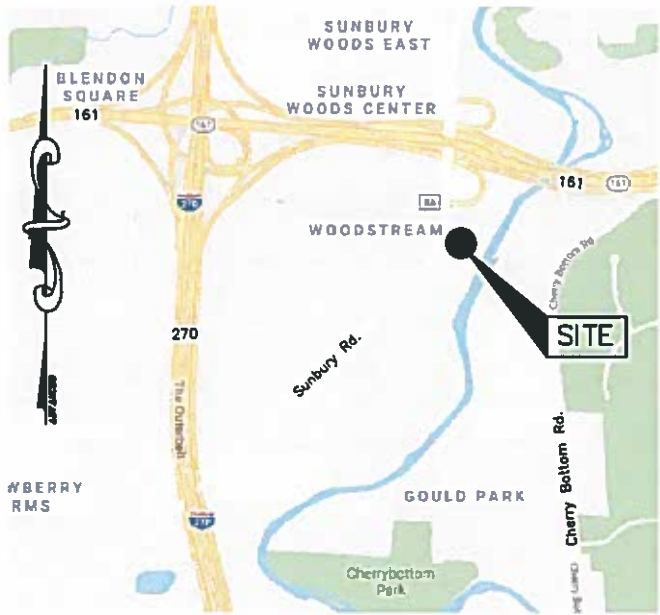
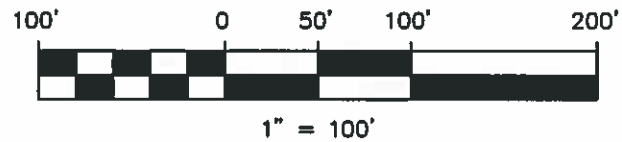


Z:\18-0162-128\DWG\PRODUCTION DRAWINGS\SURVEY\0162-128 annexation exhibit.dwg Layout 1 May 21, 2018 3:24:58pm bkarshner



LOCATION MAP

No Scale



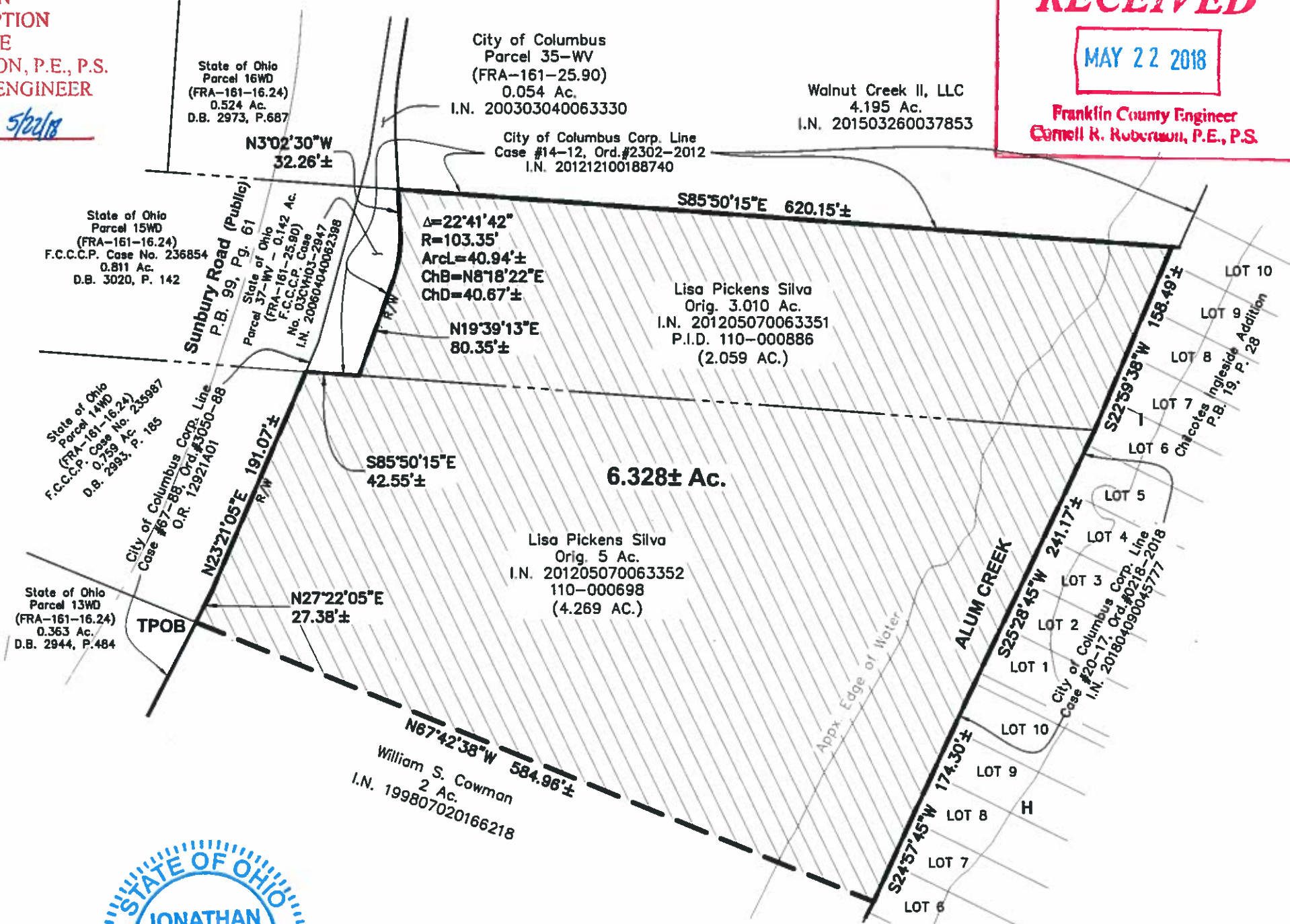
6.328± Ac.

Length of Contiguity: ±1581.3 feet  
Total Length of Perimeter: ±2166.2 feet  
Percentage of Contiguity : ±73.0%

No islands of township property are created by this annexation.

ANNEXATION  
PLAT & DESCRIPTION  
ACCEPTABLE  
CORNELL R. ROBERTSON, P.E., P.S.  
FRANKLIN COUNTY ENGINEER

By CR Date 5/22/18



**RECEIVED**  
MAY 22 2018  
Franklin County Engineer  
Cornell R. Robertson, P.E., P.S.



Jonathan E. Phelps 5/21/18  
Jonathan E. Phelps, P.S. 8241 Date:

Advanced Civil Design, Inc  
422 Beecher Road  
Gahanna, OH 43230  
Phone 614-428-7750

Job No.: 18-0162-128  
Date: 5/21/2018

**6.328± ACRE ANNEXATION  
FROM THE TOWNSHIP OF  
BLENDON TO THE CITY OF  
COLUMBUS**

Township of Blendon,  
Franklin County, Ohio  
Section 4, Township 2  
Range 17, U.S.M.L.

- Legend
- Area to be Annexed
  - Existing City of Columbus Corp Line
  - Proposed City of Columbus Corp Line