

Bidder Tabulation - Bid #RFQ010162

Purchase of Compact Excavator

Opened September 20, 2018

Bidder Name/Address	Contact Name/#	References	Experience	Warranty	Build Sheet	Literature	Manuals	Attachments	*	C.C. #	Other
Bobcat Enterprises Inc	tcannon@bobcat-ent.com	Y	Y	Y	Y	Y		Y			Bidder submitted all needed documents.

Bidder Tabulation - Bid #RFQ010162

Purchase of Compact Excavator

Opened September 20, 2018

Vendor #	Type	Line #	Alt.	Total	Product name	Qty	Unit price	Comment	Lead Time
4399	Header			\$ 74,947.82					
4399	Line	10		\$ 58,706.90	Compact Excavator	1	\$ 58,706.90		0
4399	Line	20		\$ 706.80	12" digging bucket	1	\$ 706.80		0
4399	Line	30		\$ 820.80	18" digging bucket	1	\$ 820.80		0
4399	Line	40		\$ 1,119.48	30" grading bucket	1	\$ 1,119.48		0
4399	Line	50		\$ 8,485.40	plate compactor	1	\$ 8,485.40		0
4399	Line	60		\$ 5,108.44	hydraulic hammer	1	\$ 5,108.44		0

October 23, 2017

City of Colu

RE: Explanation of Dealership Experience and Capabilities

To Whom it may concern,

The purpose of this letter is to give background information on Bobcat Enterprises Inc. an Ohio Corporation.

Since April 1975 Bobcat Enterprises has been recognized as a dealer for Bobcat Company. Bobcat Enterprises Inc. is currently recognized in the top 10% of the 650 Bobcat Dealers in the US.

BEI is recognized as a full service dealer including parts, service( including warranty), rental and sales. During its 38 years in business it has always had "premier" status with regards to service and parts with Bobcat Company.

BEI enjoys the history of being recognized as the number one distributor of Bobcat parts in the US for several years.

With a full staff of company trained and certified technicians on hand in house as well as 4 field service vehicles in operation in the Columbus area there is no reason that we can not continue to provide the support and service after the sale BEI customers have come to know.

We have a long history of supporting the needs of central Ohio municipalities including many of the Columbus city entities that have compact equipment demands. We hope to continue to earn this mutually beneficial business!

Sincerely,

Tim Cannon  
Field Sales Manager  
Bobcat Enterprises Inc.

**City of Columbus, Department of Recreation and Parks  
Detailed Specifications for Compact Track Loader**

**REFERENCES**

Bidder must briefly document capabilities and submit an outline of experience and work history in equipment and warranty service for the past five (5) years. Please submit Reference contact information from four (4) separate equipment sales. References should consist of projects of a similar scope, complexity, and cost. Please make as many copies of these pages as needed.

Business Name: Ohio Mulch Supply Inc Tel #. (614) 445-4455  
Address: 1600 Universal Rd Columbus, Ohio 43207  
E-mail: Andy@Ohiomulch.com Fax #. (614) 445-4464  
Contact: Ron Frost Equipment purchase date: Back to 2003

Equipment Provided/ Warranty Service Performed:

Provide service, parts, rental and sales support  
for a fleet of Bobcat and Doosan products

Business Name: George T. Igel Co Tel #. (614) 445-8421  
Address: 2040 Alum Creek Dr Columbus, Ohio 43207  
E-mail: Brian.Ganson@Igelco.com Fax #. (614) 449-3032  
Contact: Brian Ganson Equipment purchase date: Back to late 90's

Equipment Provided/ Warranty Service Performed:

Provide service, parts, rental and sales support for  
a fleet of Bobcat loaders including track and  
skid loaders.

Business Name: \_\_\_\_\_ Tel #. \_\_\_\_\_ - \_\_\_\_\_



**Bobcat®**

## **Compact Excavators**



***One Tough Animal.***

# Why Bobcat



 **Bobcat**  
**ADVANTAGE<sup>®</sup>**

**WATCH OUR DIGGING CHALLENGE.**

Bobcat tested several manufacturers' compact excavators side by side. Which machine digs the fastest?

▶ Visit [Bobcat.com/MyMXAdvantage](https://www.bobcat.com/MyMXAdvantage)

# Compact Excavators?

**Bobcat meets customer demands by exceeding our own. The Bobcat line of compact excavators is a perfect example of our approach to design: Never stop making it better.** Bobcat® excavators deliver stronger performance in a lighter machine, taking the production of owners and operators to the next level. Smooth, refined hydraulics allow you to dig your way out of extremely tough jobs, and a load-sensing piston pump and closed center valve systems deliver exceptional metering for smooth control of machine functions. Cushioned work group cylinders provide a smooth end-of-stroke while working. Bobcat excavators perform better, pure and simple.



# THE **R**EVOLUTION BEGINS.

Not all excavators are equal. If you need proven performance, more comfort options and better design to maximize your uptime, there's a revolutionary new lineup of Bobcat machines that demands a look.

R-Series compact excavators have a bold new look that stands out, but it only hints at the enhanced performance, productivity and comfort beneath the surface. Ask for them at your Bobcat dealer.

## **INCREASED LIFT-OVER-SIDE CAPACITY**

Dig with greater confidence over the side of the machine. New E32 and E35 R-Series excavators feature new track system designs that deliver a big increase in lift-over-side capacity – thanks to added stability and a new integrated counterweight. Operators will notice improved over-the-side digging performance and slewing ability.

## **IMPROVED RIDE QUALITY**

Experience a ride quality that's smoother, more stable and more comfortable than ever before.

## **REDUCED VIBRATION**

New body panels and improved latches tighten the overall fit and finish while reducing vibration in the cab.

## **INCREASED VISIBILITY**

Fifteen percent more glass surface area, including an improved top window, provides the best possible visibility.

## **NEW CAB, MORE COMFORT**

From the wider seat to the increased floor space, you'll see and feel more comfort everywhere in the new R-Series cab.





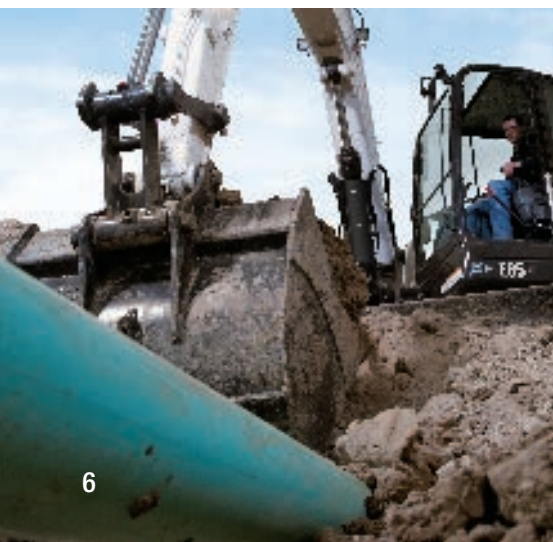
## OTHER NEW R-SERIES INNOVATIONS INCLUDE:

- Increased downward motion on the blade for enhanced digging stability
- Second-auxiliary joystick thumb toggle to intuitively switch between the second auxiliary and boom offset
- Four convenient, easy-to-reach tie-down locations to confidently secure your machine
- Horsepower options of 25 or 33 hp on the E35 model enable you to maximize power and performance in the popular 3-ton size class
- Optional automatic heat and air conditioning for consistent comfort
- Greaseless boom swing cylinder pin for easy maintenance and superior uptime



# Advanced

What's the most important way to determine an excavator's performance? Feel the balance between the hydraulic system and the engine horsepower. The guts determine the true performance of the machine. Whether it is a closed center valve, piston pump, load-sensing hydraulics or cushioned cylinders, every Bobcat excavator is engineered with advanced hydraulic components that maximize power, speed, predictability and control.



## **MORE PREDICTABLE**

The same Bobcat-exclusive control valves that deliver smooth operation also provide a predictable work group. With Bobcat excavators, you can confidently make precise movements in tight-fitting areas.

## **SMOOTHER**

Many brands claim they are smooth when they are really just slow. Bobcat excavators are both smooth and fast, so you can get work done quickly. With cushioned cylinders, Bobcat-exclusive control valve systems deliver consistent oil flow to all functions. This delivers smooth operation without sacrificing cycle times.



# Hydraulics

## MORE POWERFUL

High-efficiency, torque-limiting piston pumps match force to demand, continuously responding to loads and delivering more usable power. The work group maintains exceptional arm and bucket forces in tough conditions.

## FASTER

True cycle times aren't measured in a dealer parking lot. They're measured on the job, under load: filling trucks, placing boulders or trenching. Matching cylinder size to pump capacities, Bobcat excavators achieve industry-leading cycle times. Try Bobcat in real-life situations, and you'll get the job done faster.





# Work Group Performance


The work group, or the business end of your excavator, is how jobs get done and money gets made. To get the most out of your excavator, you need the right combination of control, precision, durability and versatility. Put a Bobcat excavator to the test. You'll find that it delivers ... and then some.

## **Robust Work Group**

The work group on Bobcat excavators is designed to provide longer structural life and improve lifting performance. Cast pivot joints provide precise pin alignment, which lengthens the service life of pivot pins and bushings. The boom structure is designed with room for secondary auxiliary hydraulics – so you can add the option faster and for less cost.

## **Fingertip Boom Swing Control**

Effective excavator work is all about precision and quickness. Bobcat excavator controls provide the ability to make fine movements with low effort and maximum comfort – so you can get better results in less time, with less fatigue.



**EXTENDABLE ARM** The Bobcat extendable arm option is the only clamp-compatible extendable arm. It gives you the best of both worlds: power and lifting performance when it's retracted or additional dig depth and reach – without need for repositioning – when it's extended.

### Improved Metering

A rocker-style thumb switch, located on the left joystick, provides superior boom swing control with better metering than foot pedals. Multi-function operation, such as swinging and traveling simultaneously, is easier, too.

### NEW **R**-SERIES FEATURE

### Second-Auxiliary Thumb Toggle

A repositioned second-auxiliary switch on R-Series compact excavators allows you to switch between second auxiliary and boom offset without removing your hand from the left joystick. It provides more convenient, more intuitive control over your machine. You'll also conduct fewer searches for the right switch.

### More Room

With the boom swing control on the joystick, you get more floor space and foot room. That extra room provides a comfort advantage on long, tiring jobs.

# Auto Shift

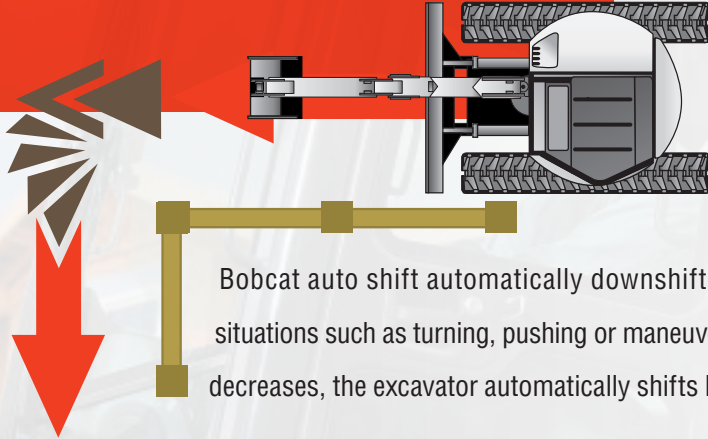
Auto-shift travel, a feature of the E20-E85 excavators, shifts the machine out of high range and back automatically, offering superb travel performance without having to manually downshift. When activated, auto shift increases

travel performance on demand – so you don't have to do anything but manage the direction and speed. A directional lug track also provides a smoother ride and less vibration when traveling.



It's not just auto idle that makes Bobcat excavators quieter. From the engine and air intake to the cooling and exhaust systems, they're designed from top to bottom to give you a quiet work environment.





Bobcat auto shift automatically downshifts into low range in situations such as turning, pushing or maneuvering. When the load decreases, the excavator automatically shifts back into high range.



## Auto Idle


The quieter and more efficient the machine, the more productive you can be. Jobsite communications become simple, noise ordinances are easier to meet – and you can work longer without stopping to refuel.

Auto idle, a standard feature on all Bobcat excavators, automatically idles the engine when machine functions are not used for four seconds. This saves fuel and lowers the noise considerably, improving jobsite communications. When you move the joystick controls or initiate travel, the excavator automatically returns to the previously set throttle position.

## NEW **R**-SERIES FEATURE

### Improved Ride Quality

Besides increasing lift-over-side performance and slewing stability, the new track system designs for E32 and E35 R-Series excavators provide a ride quality that's smoother and more comfortable than ever before.

A Bobcat E45 excavator is shown in operation, with an operator visible inside the cab. The machine is positioned on a dirt surface, and its tracks are visible. The Bobcat logo and model number 'E45' are clearly visible on the side of the machine.


*Simple, low-effort fingertip controls include a thumb switch to change the angle left and right. To engage the blade float, just push the lever all the way forward.*

**NEW** **R**-SERIES  
FEATURE

**Greater Range of Motion**

The E32 and E35 R-Series blade has 33 percent more downward positioning ability. Get the perfect angle to stabilize your machine when digging on a hill or trenching at an angle.

# ANGLE **BLADE**

A close-up shot of a hand wearing an orange work glove, gripping a black control lever. The lever has a small, rectangular button or switch on its side, which is the thumb switch mentioned in the text. The background is a blurred view of the excavator's blade and the ground.

An angle blade is important for fast backfilling and grading. This option allows you to angle your backfill blade 25 degrees left or right. Direct spoil from one side of the blade to the other without forming windrows on both sides of the blade.



## Blade Float

The blade float simplifies grading, leveling and backfilling. Smoothly finish your work with minimal operator input.

## Reversible Cutting Edge

The Bobcat angle blade is a durable, one-piece, reversible cutting edge that extends the life of your backfill blade. This provides lower operating costs and more uptime.

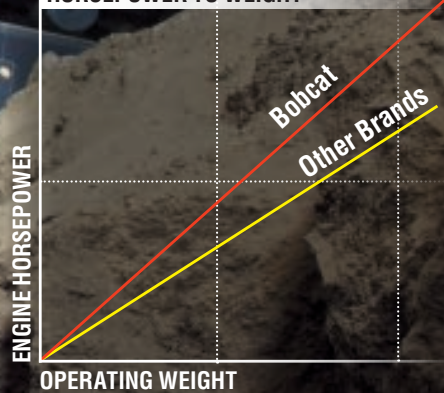


# Smarter HORSEPOWER

Bobcat Company designs its compact excavators with balance in mind. That means multiple systems and machine design characteristics are working together to maximize the hydraulic flow rate and pressure for the ultimate hydraulic horsepower advantage. This means you command a greater range of hydraulic horsepower than in machines from other manufacturers. Hydraulic horsepower matters in jobs where multifunctioning – the ability to travel, swing the boom and use your attachment – is essential. The loaded performance of Bobcat compact excavators is easily measured in increased slew torque, faster cycle times and maximum auxiliary hydraulic performance. The end result is more work per hour and increased attachment performance.



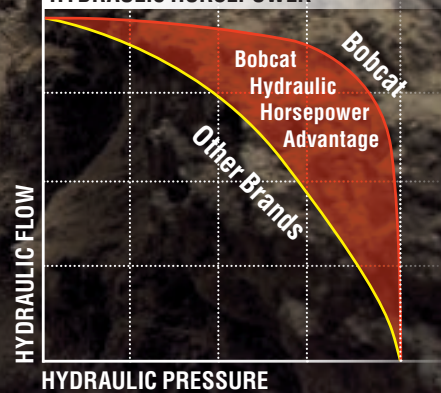
HORSEPOWER TO WEIGHT



### LIGHTER MACHINES WITH MAXIMUM POWER

Bobcat excavators have more engine horsepower than other brands of the same size, which means pound for pound, you'll get better digging performance than you would from other manufacturers' machines.

HYDRAULIC HORSEPOWER



### HYDRAULIC HORSEPOWER

By having more engine horsepower, Bobcat excavators generate more horsepower in the hydraulic system, where it counts. This allows the excavator to utilize flow at higher pressures, which translates into faster cycle times under load. Simply put, they dig stronger and faster.



## Panoramic Serviceability

Bobcat makes it easy to find and reach your engine checkpoints – so daily maintenance actually gets done every day. Comparing our service access to other excavators is like comparing a 60-inch LED to a 15-inch black-and-white TV. The swing-open tailgate and side access hood put the engine and pump package, valve bank, cooling system and plumbing in easy reach.

A centralized grease bank makes fast, simple work of lubricating the slew bearing, slew pinion and swing cylinder. Track tensioning is performed via an easy-to-reach, well-protected grease cylinder fitting.

On most Bobcat excavators, a multi-groove auto-tensioning belt, made of tough DuPont™ Kevlar®, requires no adjustment, making maintenance much easier. The cooling cores can be separated for quick, easy cleaning of the radiator.



*Time is money. Routine maintenance is an important factor in controlling operating costs. Filters, fluid and daily maintenance checkpoints are right at your fingertips in a Bobcat excavator.*

# The Bobcat depth check system saves time and money.

The Bobcat depth check system for compact excavators improves profitability by minimizing the tendency to over- and under-dig. With an accuracy of  $\pm 0.5$  inches, it's a superior and affordable option for achieving grade or meeting minimum cover specifications. Bobcat is the only manufacturer to offer depth check on the majority of its compact excavators – from the E32 to the E55, and now the E85 as well.

## Tier 4 Solutions

Tier 4 emissions standards require every equipment manufacturer to make equipment changes. Bobcat seized the opportunity to design a non-DPF Tier 4 solution that also delivers new features and provides more performance to customers.

### Simple, State-of-the-Art and Non-DPF

Until recently, a Diesel Particulate Filter (DPF) was the only technology that removed enough particulate matter (PM) to meet Tier 4 regulations. Bobcat created an ultra-low particulate combustion (ULPC) capable engine with a specially designed combustion chamber. ULPC drastically reduces PM created during engine combustion – so there is no need for a DPF. The biggest advantage of our non-DPF Tier 4 solution is simplicity. The DPF cleaning process, called regeneration, requires knowledgeable operation to keep the DPF and engine running properly. ULPC eliminates downtime that occurs with DPF regeneration and long-term DPF maintenance costs. That allows operators to focus on working.

#### Other Bobcat Engine Advantages:

##### Improved Machine Shutdown Protection

Monitors coolant and oil temperatures and prevents them from reaching a critical point of shutdown.

##### Cold Weather Engine Protection

Protects your machine from working too hard before the engine is properly warmed up.

*Go to [Bobcat.com/NewEngine](http://Bobcat.com/NewEngine) to learn more about the new Bobcat engine features and performance improvements.*

### Integrated with the Bobcat Deluxe Instrument Panel

When you have deluxe instrumentation installed on your Bobcat compact excavator, there are no display screens or control panels to install. The deluxe instrument panel provides complete control and job monitoring, including:

- Distance to target
- Grade check
- Depth check

### Fully Wired for Simplicity and Accuracy

The simple, durable depth check system from Bobcat is wired, so job conditions or wireless signal loss will never rob your accuracy.

- Reduces the lag time of the signal transmission from the sensor to the deluxe instrument panel display
- Maintains a strong signal even when submerged in water
- No batteries to charge and maintain

The Bobcat depth check system includes position sensors for the boom, arm and bucket (three total) and all necessary harnesses. Optional laser receivers provide even more flexibility.



# Cab Comfort

Bobcat pays as much attention to operator comfort as it does to digging performance. How does Bobcat provide superior comfort levels to other machines? We start by giving you the most cabspace in the industry. In general, we provide 20 percent more interior cab volume than other brands.



## Optional Deluxe Instrument Panel

Eco Mode Capabilities\*  
Enhanced Machine Vitals  
Nine Programmable Passwords  
High-Resolution Graphic Display  
Attachment Operating Screens  
Integrated Keyless Start  
Diagnostic Screens



### STANDARD PANEL ▶

*The standard panel provides handy controls and visible, easy-to-read information that helps operators efficiently operate the excavator: fuel level, coolant temperature, hydraulics and more.*



We didn't stop there. Bobcat has the largest cab entry/exit room in the market. We also provide a king-sized adjustable suspension seat for ultimate comfort during long hours of operation. Adjustable armrests and fold-up pedals give you flexibility and room for comfortable operation, and lockable storage keeps your personal items secure and out of the way.

With quiet engines, solid construction and materials that absorb vibration, Bobcat excavators minimize noise and make the job more enjoyable. Bobcat excavators also feature auto idle, which makes jobsite communications easier.

An in-cab pattern selector allows you to change from an "excavator" to a "backhoe" control pattern from the seat of the cab – no keys required.

For added comfort and productivity, our blade float feature exerts a minimal, consistent down-force on the blade – without operator input. This makes grading, leveling and backfilling quick and easy.

Ergonomic one-hand travel control makes travel easier and more intuitive, adding maneuverability and saving you time.

Strategically positioned heat and air-conditioning vents direct air flow where you need it most. Other elements such as radio-wired cabs and fingertip-controlled auxiliary hydraulics all add up to increased operator comfort.

Bobcat believes that there is a direct relationship between operator comfort and productivity. If you can comfortably stay in the seat longer, you will be able to get more work done.

*\*On deluxe dash only. Eco Mode allows you to optimize fuel efficiency.*

### **SUN VISOR**

*A sun visor over the top window shields your eyes from the sun on bright days.*

### **INCREASED VISIBILITY**

*The tall, wide windows inside the R-Series cab have 15 percent more surface area, which includes a larger top window and narrower side pillars for visibility that's never been better.*

### **THE NEW R-SERIES CAB OFFERS AN UNBEATABLE OPERATOR EXPERIENCE.**

*The new R-Series cab offers an unbeatable operator experience. When you take the seat, you can feel the difference, and you can see refinements everywhere you look.*

*More floor space in R-Series compact excavators provides optimal footroom and legroom. To maximize floor space even more, redesigned floor pedals conveniently fold away. The R-Series suspension seat is wider. The cab interior is, too. Even when the job is tough and punishing, you'll enjoy a spacious, comfortable seat and plenty of elbow room all day long. You can even feel the quality at your fingertips, as the improved joysticks are newly designed and feel better in your hands.*

### **REDUCED SOUND AND VIBRATION**

*The sharp new body panels aren't just for looks. They're stiffer and more robust. They fit tighter together, and they include stronger hinges and latches. Together, these features reduce vibration and lower sound levels in the cab.*





# **R**EVOLUTIONARY COMFORT

## **Enjoy the improved ride quality in R-Series compact excavators.**

The new dual-flange track roller system for R-Series excavators noticeably improves the ride quality, bringing you greater comfort while moving across bumpy jobsites.

### **Automatic Heat and Air Conditioning**

Set your temperature and forget it. The optional automatic heat and air conditioning system adjusts itself to keep a steady and comfortable temperature while you're inside the cab.

### **Tubular-Frame Reinforced Door**

A tubular-frame reinforced door adds rigidity and closes tightly for an improved seal. It holds strong to keep dust and dirt out of the cab, even after years of use.

### **Behind-the-Seat Storage**

Additional storage behind the seat provides a convenient space for work gloves and other personal items.

### **Easy-to-Reach Control Pattern Selector**

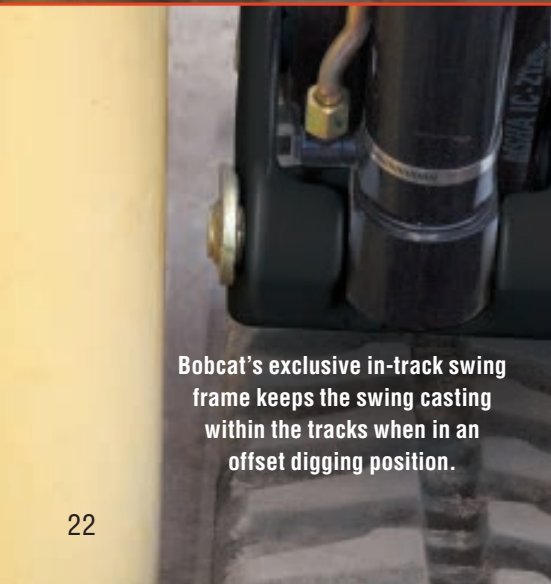
Easily attain your preferred control pattern without stopping the work. A new control pattern selector switch is conveniently located under the seat within easy reach – so operators can switch between ISO and standard controls without getting up or stretching to reach out-of-the-way switches.

### **Heated Seat**

When it's cold outside, the optional heated seat makes a perfect complement to the automatic temperature control, keeping your body warm on frigid days.



This picture depicts the “unicorn effect” found on other brands. The protruding cast and cylinders limit access to tight areas and areas around obstacles.



Bobcat's exclusive in-track swing frame keeps the swing casting within the tracks when in an offset digging position.

 **Bobcat.**  
**ADVANTAGE<sup>®</sup>**

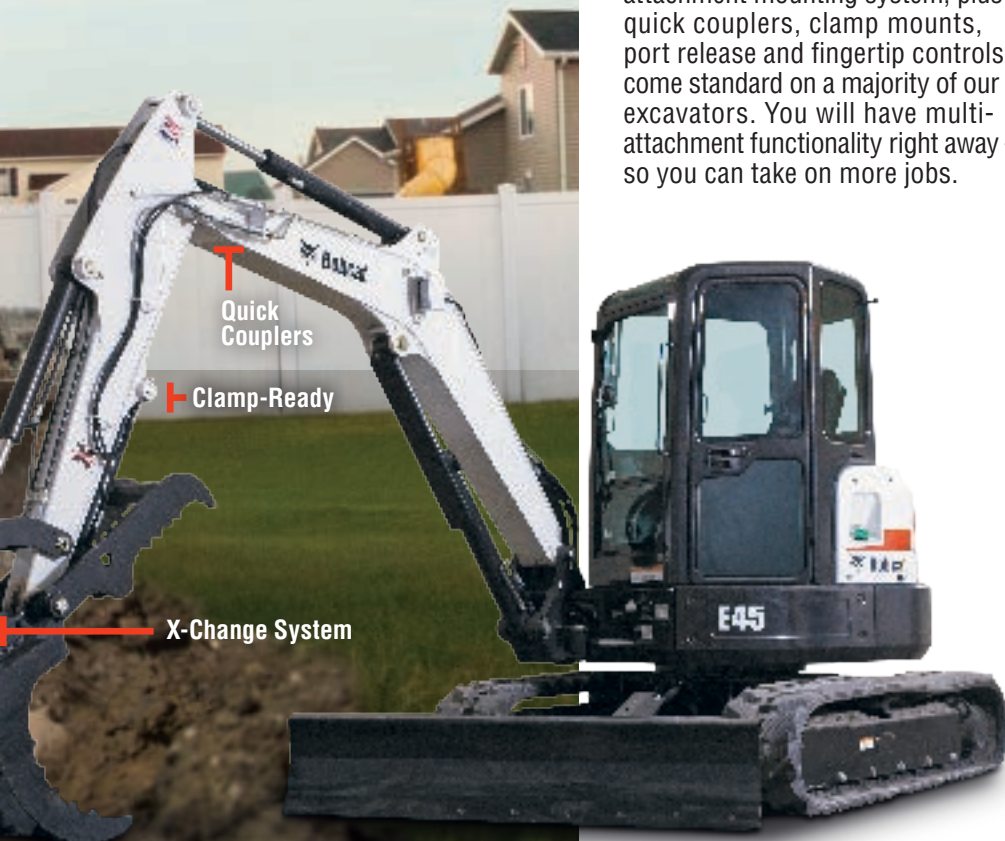
**SEE THE BENEFITS OF THE BOBCAT  
IN-TRACK SWING FRAME.**

Bobcat designed its machine to dig closer in an offset position. How about the other manufacturers?

▶ Visit [Bobcat.com/MyMXAdvantage](http://Bobcat.com/MyMXAdvantage)

# In-Track Swing Frame

All Bobcat models feature the exclusive in-track swing frame, which allows you to get closer to your work. Our swing castings and cylinders stay within the tracks when offset digging – giving you the ability to truly dig flush up against an obstacle and increasing your ability to work in tight areas when in an offset dig position. Bobcat excavators are engineered to operate in the smallest of workspaces.



For the most convenient attachment changes in the industry, purchase the optional Hydraulic X-Change™ system. Activate the hydraulic pins at the press of a switch; retract for attachment removal or extend for attachment hook up. Hydraulic X-Change maintains optimal “pin-on” bucket geometry – so that arm and bucket forces are not compromised.



## Attachments Now

With many excavators, the quick-tach system, hoses and couplers, controls, and clamp mounts can be pricey add-ons. Bobcat excavators are different. Our exclusive X-Change attachment mounting system, plus quick couplers, clamp mounts, port release and fingertip controls, come standard on a majority of our excavators. You will have multi-attachment functionality right away – so you can take on more jobs.

### Fingertip Controls

The auxiliary hydraulic controls are at your fingertips, providing precision control and low-fatigue operation. Variable flow allows you to control the attachment speed and precisely move a clamp. Detent provides continuous flow for attachments such as augers and plate compactors.

### Selectable Auxiliary Hydraulic Flow

Bobcat excavators allow you to quickly select an auxiliary flow rate that best matches a particular attachment. Low flow provides precise control of the PowerTilt® swing accessory and Hydra-Tilt™ swing accessory. Medium flow is perfect for the clamp attachment. Maximum flow is best for breakers, augers and compactors.

### Quick Couplers

Auxiliary quick couplers are conveniently located on the boom, out of the trench and out of harm's way.

### Clamp Ready

There's no welding to add a clamp. Mounts are integrated into the dipper arm for maximum durability.

PowerTilt® is a registered trademark of Helac Corporation.



### **Toughest Clamp**

Equip your excavator with the best hydraulic clamp in the industry for even more versatility. Compare it to all others, and it's easy to see that the Bobcat clamp is bigger, stronger and better for grabbing more material.

# Do more than dig.

Bobcat excavators have your business expansion built right in. Nobody builds more compact excavator attachments. Whether it's breaking concrete, breaking down buildings or drilling tree holes, Bobcat attachments help you take on new jobs and get more use from your machine. You can even share some of the same attachments that fit on your Bobcat loaders. This gives you the most versatility for your dollar as well as improved profitability. With more than a dozen attachments to choose from, your Bobcat excavator is not just a digging machine; it's a versatile tool carrier.

### **BUILT-IN VERSATILITY**

Auger	Packer wheel
Breaker	Plate compactor
Clamp	PowerTilt swing accessory
Flail cutter	Pro Clamp™ system
Grading blade	Ripper
Grading bucket	Severe-duty trenching bucket
Grapple, three-tine	Trencher
Hydra-Tilt swing accessory	



**Auger**

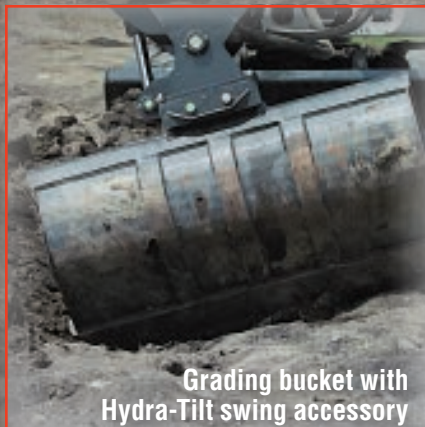


**Flail cutter**



Steel tracks increase your uptime and pushing force when you're working in harsh or abrasive jobsites.

**Steel tracks with rubber pads**



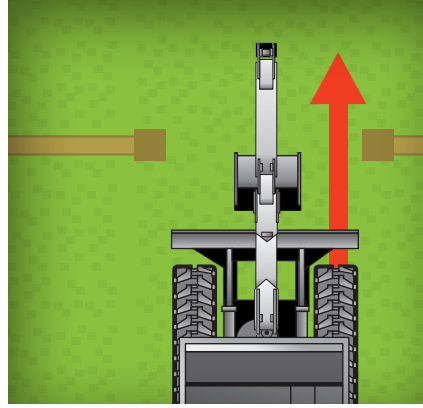
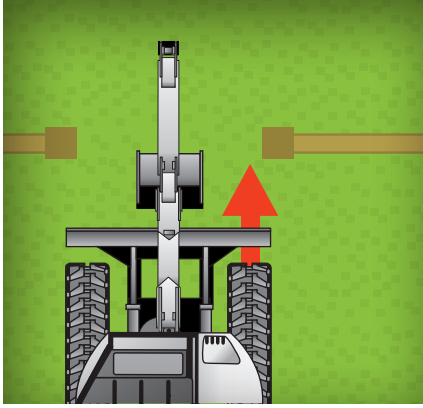
**Grading bucket with  
Hydra-Tilt swing accessory**



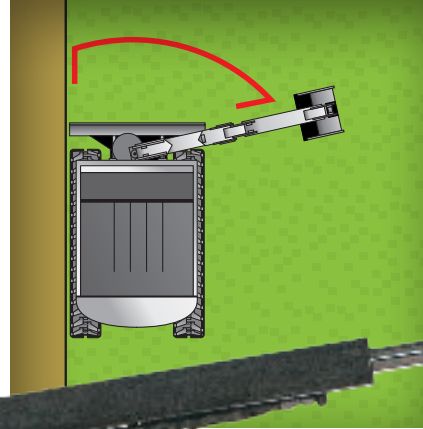
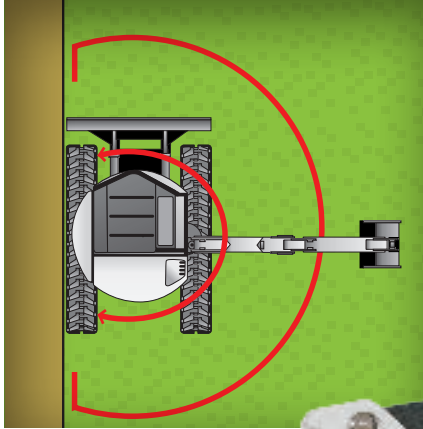
**Plate compactor**



**Pro Clamp system**



◀ A Zero Tail Swing (ZTS) or minimal tail swing excavator is generally a little wider than a conventional swing excavator. Consider conventional if your biggest obstacle is gaining access through a gate or maneuvering into a crowded backyard.

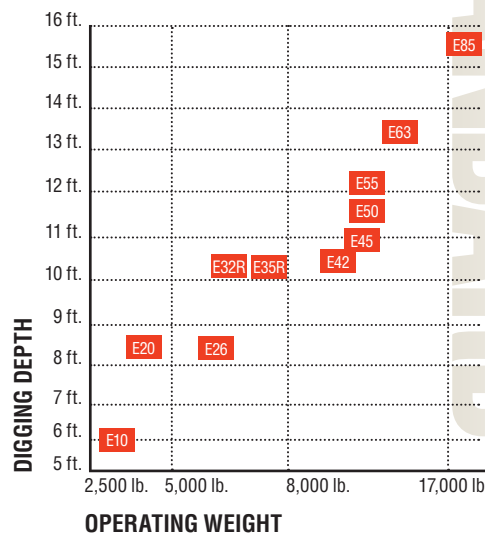


# Selecting

◀ A ZTS or minimal tail swing excavator gives you more unrestricted rotation and provides greater flexibility if you are constantly working close to objects or against a wall.



*Bobcat covers a wide range of digging depths for a wide range of job possibilities: from 6 feet to more than 15 feet!*



Conventional house or Zero Tail Swing?  
Long arm or standard power arm?  
A lightweight model or a heavy-duty  
machine? There are many things to  
consider when choosing an excavator.  
No matter what features you're looking  
for, Bobcat has you covered.

# a Model

## Standard Arm

The standard power arm gives  
you maximum breakout force  
and lifting ability.

## Long Arm

If you need more reach and dig  
depth to avoid machine repositioning  
or to make loading trucks faster  
and easier, equip your machine with  
the optional long arm (available on  
certain models).

## Extendable Arm

The extendable arm option gives  
you the best of both worlds. Get  
power and lifting performance when  
it's retracted. Telescope the arm  
to extend the machine's dig depth  
and reach without repositioning.  
It's the only extendable arm that's  
clamp-compatible.



# E10

## Unmatched Maneuverability

Those small, tight-access jobs are  
often the most work – because  
average equipment doesn't fit.  
That's when a Bobcat compact  
excavator really pays off.

The ultra-compact, ultra-powerful and  
ultra-comfortable E10 from Bobcat  
includes ZTS, a fold-down Tip Over  
Protection System (TOPS), and a  
retracted track width of 28 inches. With  
this level of portable horsepower, you'll  
gain access through doorways and  
cramped jobsites where exhausting  
hand labor is your only other option.

## Retractable Undercarriage

The E10 and E20 Bobcat compact  
excavators feature a hydraulically  
activated retractable undercarriage.  
Retract the track to squeeze through  
the tightest access points.



## Bobcat Loaders ...

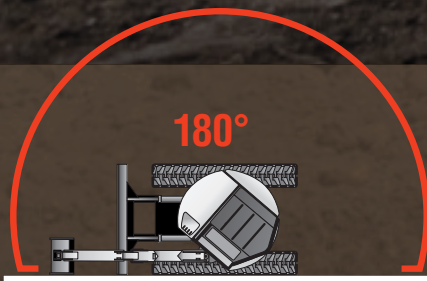


## A Perfect Combination

*If you want to push your productivity to new heights, pair your excavator with a Bobcat loader.*

### Ultimate Earth-Moving Combination

Whether you are replacing a backhoe or a small crawler dozer, nothing beats the versatility and speed of a Bobcat excavator working in tandem with a Bobcat loader.

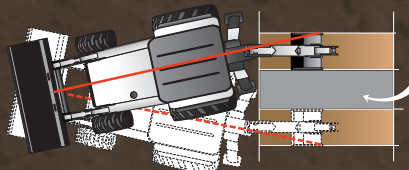
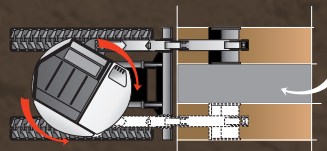
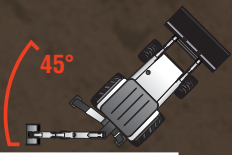


### Independent Boom Swing

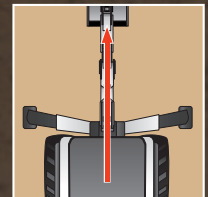
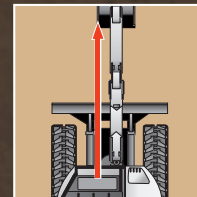
provides offset digging capabilities, enabling you to dig square holes, or on each side of a buried utility, without repositioning the machine. Try that without repositioning your backhoe.

### Greater Flexibility

is what you get when working next to objects. In this situation, a tractor loader backhoe may be limited to only 45 degrees of work group movement. The excavator excels at the same situation by having up to 180 degrees of movement – allowing you to place spoil where you need to, or even load a truck behind the machine.



## Why excavators



**Operator Offset** on a compact excavator positions the operator to the side of the boom for an unobstructed view of the attachment. On a tractor loader backhoe, you have to lean around the boom to see the attachment.



## Bobcat Excavators ...

### Versatility

Dozers can do only one thing. Backhoes offer just a few attachments. The compact track loader and excavator can use up to 60 different attachments, giving you access to more jobs.

### Compact Efficiency

The compact size of Bobcat loaders and Bobcat excavators allows use in confined areas like backyards and inside buildings.

### Efficiency Saves You Money

You can only accomplish one thing at a time with a backhoe. When you combine a Bobcat compact excavator with a loader, you can double your productivity. One can dig while another can backfill or load trucks at the same time.

## are better than backhoes

### TRACKS PERFORM BETTER.

The tracked undercarriage on compact excavators greatly reduces ground pressure; you also eliminate downtime from flat tires.

### BETTER FUEL ECONOMY

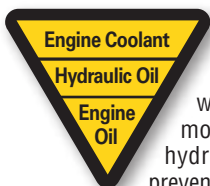
For a fraction of the cost of larger equipment, you can do similar tasks, and many more, in tighter working conditions.

### LOWER COST

Smaller displacement engines, designed and balanced to meet performance demands, reduce fuel costs without sacrificing performance.

# Uptime Protection

No other manufacturer provides so many job-proven features to give you more uptime in the field. Standard features such as machine shutdown, battery rundown protection, on-board diagnostics and sealed connectors all help you stay on the job longer.



## MACHINE SHUTDOWN PROTECTION

A majority of Bobcat excavators come standard with automatic shutdown that monitors engine parameters and hydraulic functions. The system prevents catastrophic engine failure and shuts the machine down if necessary, lessening the chance of damage to the engine or hydraulic components.

**DIAGNOSTICS** Bobcat provides on-board diagnostics to efficiently troubleshoot problems in the field or prevent them before they occur – reducing downtime for you.

**AUTOMATIC GLOW PLUGS** Bobcat uses automatic glow plugs to warm the fuel mixture within the engine when it is started at a cooler temperature. This leads to easier starts and longer life for the engine and starter.



## KEYLESS START

Reduce the risk of loss due to theft or unauthorized use by equipping your excavator with the optional keyless start.

## BATTERY RUN-DOWN PROTECTION

The lighting circuit automatically shuts down to prevent accidental battery discharge when lights are left on after the work is done.

## ELECTRONIC PROTECTION

Bobcat electronics aren't just durable; they meet or exceed military IP67 requirements for sealing, moisture, shock and vibration. All the controls and electrical systems are engineered with more watertight, corrosion-resistant connectors than other manufacturers.



## SIMPLE MACHINE TIE-DOWN

Easily and confidently secure your machine to trailers using its convenient, easy-to-reach tie-down locations.

**EXTENDED SERVICE INTERVALS** The E63 and E85 excavators have 250-hour greasing intervals, thanks to polymer shims and the design of the bushings at the boom, arm and bucket locations.

## AUTOMATIC SLEW BRAKES

Bobcat excavators feature integrated slew brakes – so you can have infinite brake positioning. This makes it easier to load and position the machine on a trailer.



**NEW R-SERIES**  
FEATURE

## Easy-Access Machine Tie-Downs

When you prepare your R-Series excavator for transport, four easy-to-find and easy-to-reach tie-down points help you quickly secure it to the trailer – so you can quickly move to the next job.



## FUEL FILL ALERT

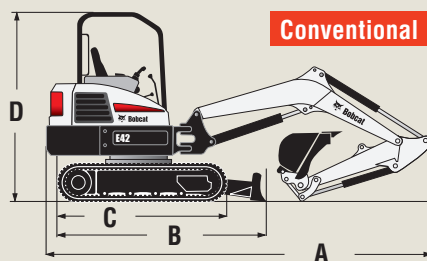
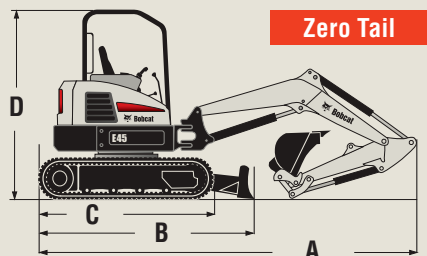
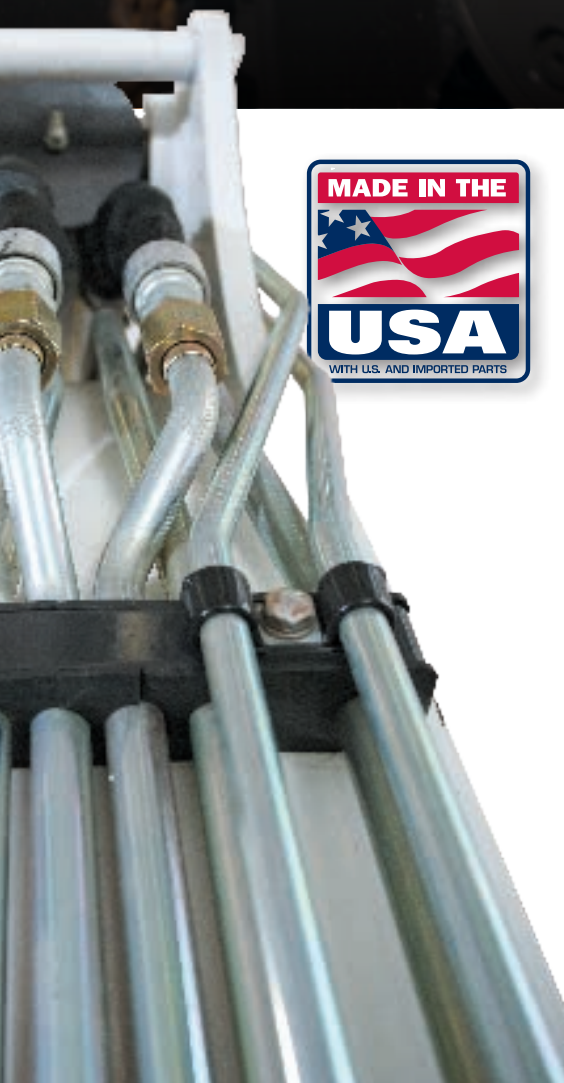
An audible alarm beeps faster as the fuel tank approaches its capacity, taking the guesswork out of refueling.

## BETTER HOSES, BETTER ROUTING

Bobcat steel hydraulic lines offer better protection than rubber hoses. They're routed through the lower portion of the boom swing casting and tucked securely into the top area of the boom structure, preventing costly damage and protecting component life.



Automatic Slew Brakes



**TRAINING RESOURCES**  
Train operators and technicians in the safe operation and servicing of Bobcat equipment. Operator training courses, safety videos and other training materials are available at your Bobcat dealer's parts department or online at [Bobcat.com/Safety](http://Bobcat.com/Safety)

## Transport & Access Dimensions

	E10	E20	E26	E32R	E35R	E42	E45	E50	E55	E63	E85
<b>A</b> – Overall Length	110 in. (2793 mm)	145.2 in. (3688 mm)	170 in. (4327 mm)	184 in. (4661 mm)	190 in. (4823 mm)	200 in. (5080 mm)	211 in. (5370 mm)	219 in. (5555 mm)	206.4 in. (5243 mm)	224 in. (5685 mm)	246 in. (6241 mm)
<b>B</b> – Track Length w/ Blade	64 in. (1627 mm)	81 in. (2058 mm)	96 in. (2442 mm)	99 in. (2512 mm)	101 in. (2579 mm)	110 in. (2780 mm)	120 in. (3049 mm)	120 in. (3049 mm)	120 in. (3049 mm)	124 in. (3150 mm)	131 in. (3342 mm)
<b>C</b> – Track Length	50.4 in. (1280 mm)	63.8 in. (1620 mm)	77 in. (1965 mm)	77 in. (1970 mm)	82 in. (2074 mm)	90 in. (2276 mm)	99 in. (2523 mm)	99 in. (2523 mm)	99 in. (2523 mm)	98.4 in. (2500 mm)	113 in. (2863 mm)
<b>D</b> – Cab Height	87 in. (2209 mm)	90.4 in. (2297 mm)	94.9 in. (2408 mm)	96.2 in. (2443 mm)	96.2 in. (2443 mm)	98.7 in. (2506 mm)	99.7 in. (2532 mm)	99.7 in. (2532 mm)	99.7 in. (2532 mm)	100.4 in. (2550 mm)	99.8 in. (2536 mm)
<b>Width</b>	28-43 in. (710-1100 mm)	39-54 in. (980-1363 mm)	61 in. (1550 mm)	61 in. (1550 mm)	69 in. (1750 mm)	69 in. (1750 mm)	77.2 in. (1960 mm)	77.2 in. (1960 mm)	77.2 in. (1960 mm)	78 in. (1980 mm)	86.8 in. (2205 mm)

# Specifications



Excavator	E10	E20	E26	E32	E35 25 HP / 33 HP
Series	R	R	M	R	R
Tail Swing Type	Zero Tail	Zero Tail	Zero Tail	Conventional Tail	Zero Tail
– Tail Swing Overhang	—	—	—	13.8 in. (351 mm)	—
Weight	2593 lb. (1176 kg)	4306 lb. (1953 kg)	5673 lb. (2614 kg)	7340 lb. (3329 kg)	7699 lb. (3492 kg) / 7909 lb. (3587 kg)
Dig Depth	6 ft. (1820 mm)	8 ft. 5 in. (2565 mm)	8 ft. 10 in. (2696 mm)	10 ft. 3 in. (3117 mm)	10 ft. 3 in. (3117 mm)
Reach @ Ground Level	10 ft. 2 in. (3093 mm)	14 ft. (4264 mm)	15 ft. 4 in. (4675 mm)	16 ft. 4 in. (4980 mm)	17 ft. 2 in. (5230 mm)
Dump Height Clearance	6 ft. (1818 mm)	8 ft. 10 in. (2693 mm)	9 ft. 6 in. (2889 mm)	11 ft. (3340 mm)	11 ft. (3340 mm)
Width	28.0-43.0 in. (710-1100 mm)	39.0-54.0 in. (980-1363 mm)	61.0 in. (1550 mm)	61.0 in. (1550 mm)	69.0 in. (1750 mm)
Ground Pressure	4.2 psi (28.8 kPa)	4.4 psi (30.1 kPa)	3.7 psi (25.3 kPa)	4.7 psi (32.2 kPa)	4.6 psi (31.8 kPa) / 4.7 psi (32.7 kPa)
– Standard Track Width	7.1 in. (180 mm)	9.1 in. (230 mm)	11.8 in. (300 mm)	11.8 in. (300 mm)	11.8 in. (300 mm)
<b>Performance</b>					
Arm Breakout Force	1248 lbf. (5550 N)	2086 lbf. (9279 N)	3586 lbf. (15,950 N)	4859 lbf. (20,413 N)	4859 lbf. (20,413 N)
Bucket Breakout Force	1865 lbf. (8294 N)	4684 lbf. (20,835 N)	4991 lbf. (22,200 N)	6968 lbf. (30,995 N)	6968 lbf. (30,995 N)
Rated Lift Capacity					
(Over blade, ground level, 10 ft. (3 m) reach)	527 lb. (239 kg)	1098 lb. (498 kg)	1902 lb. (863 kg)	2795 lb. (1268 kg)	3232 lb. (1466 mm)
(Over side, ground level, 10 ft. (3 m) reach)	263 lb. (119 kg)	644 lb. (292 kg)	699 lb. (317 kg)	1376 lb. (624 kg)	1407 lb. (638 kg) / 1482 lb. (672 kg)
Travel Speed: Low/High	1.3/1.7 mph (2.1/2.8 km/hr.)	1.3/2.5 mph (2.1/4.0 km/hr.)	1.5/2.8 mph (2.4/4.5 km/hr.)	1.6/2.9 mph (2.6/4.7 km/hr.)	1.6/2.9 mph (2.6/4.7 km/hr.)
<b>LONG ARM OPTION PERFORMANCE</b>					
Tail Swing Type/Overhang	—	—	Minimal – 2.6 in. (65 mm)	Conv. – 17.3 in. (439 mm)	Minimal – 3.5 in. (89 mm)
Weight (with Long Arm & Counterweight)	—	—	6190 lb. (2808 kg)	8203 lb. (3720 kg)	8377 lb. (3800 kg) / 8587 lb. (3895 kg)
Dig Depth	—	—	9 ft. 10 in. (3000 mm)	11 ft. 3 in. (3417 mm)	11 ft. 3 in. (3417 mm)
Reach @ Ground Level	—	—	16 ft. 4 in. (4971 mm)	17 ft. 4 in. (5270 mm)	18 ft. 1 in. (5520 mm)
Dump Height Clearance	—	—	10 ft. 2 in. (3091 mm)	11 ft. 7 in. (3521 mm)	11 ft. 7 in. (3521 mm)
<b>EXTENDABLE ARM OPTION PERFORMANCE</b>					
Tail Swing Type/Overhang	—	—	—	Conv. – 17.3 in. (439 mm)	Minimal – 3.5 in. (89 mm)
Weight (with Ext. Arm & Counterweight)	—	—	—	8434 lb. (3825 kg)	8597 lb. (3899 kg) / 8807 lb. (3994 kg)
Dig Depth	—	—	—	12 ft. 11 in. (3932 mm)	12 ft. 11 in. (3932 mm)
Reach @ Ground Level	—	—	—	18 ft. 11 in. (5762 mm)	19 ft. 9 in. (6012 mm)
Dump Height Clearance	—	—	—	12 ft. 6 in. (3806 mm)	12 ft. 6 in. (3806 mm)
<b>Engine</b>					
Tier	Tier 4	Tier 4	Tier 4	Tier 4	Tier 4
Horsepower	10.2 hp (7.6 kW)	13.9 hp (10.4 kW)	24.8 hp (18.5 kW)	24.8 hp (18.5 kW)	24.8 hp (18.5 kW) / 33.5 hp (25.0 kW)
Engine Type	Diesel	Diesel	Diesel	Diesel	Diesel / Turbo Diesel
Fuel Tank Capacity	4.2 gal. (16.0 L)	5.0 gal. (19.0 L)	9.1 gal. (34.6 L)	14.0 gal. (52.0 L)	14.0 gal. (52.0 L)
Engine Shutdown Protection Feature	—	Std	Std	Std	Std
Battery Run-Down Protection	—	Std	Std	Std	Std
<b>Hydraulics</b>					
Piston Pump	—	Yes	Yes	Yes	Yes
Load-Sensing Pump	—	Yes	Yes	Yes	Yes
<b>Machine Features &amp; Options</b>					
Angle Blade	—	—	—	—	Opt
Auto-Idle Throttle	—	—	Std	Std	Std
Auto-Shift Travel System	—	Opt	Std	Std	Std
Automatic Slew Brake	—	Std	Std	Std	Std
Blade Float	—	—	Std	Std	Std
Cab with Heat	—	Opt	—	—	—
Cab with Heat and A/C	—	—	Opt	Opt	Opt
Control Pattern Selector	Std	Std	Std	Std	Std
Deluxe Cloth Seat	—	—	Opt	Opt	Opt
Fingertip Boom Swing Control	—	Opt	Std	Std	Std
Fold-Down TOPS	Std	—	—	—	—
Fuel Fill Alert	—	—	Std	Std	Std
Heated Seat	—	—	—	Opt	Opt
In-Track Swing Frame	Std	Std	Std	Std	Std
Keyless/Password Start System	Opt	Opt	Opt	Opt	Opt
Lift Point	Opt	Opt	—	Opt	Opt
Retractable Undercarriage	Std	Std	—	—	—
Steel Tracks	—	—	—	Opt	Opt
– Bolt-On Street Pads	—	—	—	Opt	Opt
Segmented Tracks	—	—	—	—	—
<b>Features for Attachments</b>					
X-Change Attachment Quick-Tach System	—	—	Std	Std	Std
Hydraulic Attachment Quick-Tach System	—	—	—	Opt	Opt
Auxiliary Hydraulics with Quick Couplers	Std	Std	Std	Std	Std
Auxiliary Hydraulic Flow	5.3 gpm (20.0 L/min.)	7.9 gpm (30.0 L/min.)	12.5 gpm (47.2 L/min.)	16.9 gpm (63.9 L/min.)	16.9 gpm (63.9 L/min.)
Auxiliary Hydraulic Pressure	2758 psi (190 bar)	2610 psi (180 bar)	2600 psi (179 bar)	2987 psi (206 bar)	2987 psi (206 bar)
Hydraulic Clamp	—	Opt	Opt	Opt	Opt
Fingertip Auxiliary Control	—	Opt	Std	Std	Std
Secondary Auxiliary Hydraulics	—	—	Opt	Opt	Opt
Selectable Auxiliary Flow	—	Opt	—	Std	Std



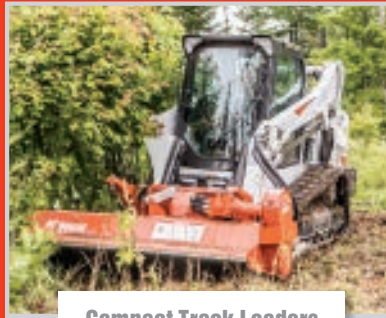
E42	E45	E50	E55	E63	E85
M	M	M	M	M	R
Conventional Tail	Zero Tail	Minimal Tail	Conventional Tail	Conventional Tail	Conventional Tail
16.9 in. (429 mm)	—	0.6 in. (16 mm)	13.4 in. (340 mm)	11.6 in. (295 mm)	13 in. (330 mm)
9246 lb. (4194 kg)	10,077 lb. (4571 kg)	10,677 lb. (4843 kg)	12,004 lb. (5445 kg)	13,779 lb. (6250 kg)	18,977 lb. (8608 kg)
10 ft. 6 in. (3205 mm)	10 ft. 10 in. (3300 mm)	11 ft. 7 in. (3524 mm)	12 ft. 11 in. (3923 mm)	13 ft. 6 in. (4115 mm)	15 ft. 5 in. (4692 mm)
17 ft. 3 in. (5246 mm)	18 ft. 7 in. (5670 mm)	19 ft. 6 in. (5939 mm)	20 ft. (6083 mm)	20 ft. 5 in. (6230 mm)	23 ft. 7 in. (7198 mm)
12 ft. 3 in. (3725 mm)	11 ft. 11 in. (3637 mm)	12 ft. 9 in. (3877 mm)	13 ft. 7 in. (4132 mm)	14 ft. (4260 mm)	16 ft. 7 in. (5055 mm)
69.0 in. (1750 mm)	77.2 in. (1960 mm)	77.2 in. (1960 mm)	77.2 in. (1960 mm)	78.0 in. (1980 mm)	87.0 in. (2205 mm)
4.3 psi (29.8 kPa)	3.7 psi (25.7 kPa)	3.9 psi (27.2 kPa)	4.8 psi (31.4 kPa)	5.1 psi (35.2 kPa)	5.6 psi (38.3 kPa)
13.8 in. (350 mm)	15.7 in. (400 mm)	15.7 in. (400 mm)	15.7 in. (400 mm)	15.7 in. (400 mm)	17.7 in. (450 mm)
5672 lbf. (25,230 N)	5332 lbf. (23,720 N)	6744 lbf. (29,997 N)	5751 lbf. (25,580 N)	5767 lbf. (25,654 N)	8253 lbf. (36,712 N)
9183 lbf. (40,850 N)	7650 lbf. (34,030 N)	8977 lbf. (39,930 N)	8977 lbf. (39,930 N)	9731 lbf. (43,287 N)	16,269 lbf. (72,368 N)
4603 lb. (2088 kg)	5131 lb. (2328 kg)	6034 lb. (2737 kg)	4999 lb. (2268 kg)	5902 lb. (2677 kg)	9754 lb. (4425 kg)
1459 lb. (662 kg)	1453 lb. (659 kg)	1610 lb. (730 kg)	2881 lb. (1307 kg)	3026 lb. (1372 kg)	4698 lb. (2131 kg)
1.6/2.9 mph (2.6/4.7 km/hr.)	1.5/2.6 mph (2.4/4.2 km/hr.)	1.9/3.1 mph (3.1/5.0 km/hr.)	1.9/3.1 mph (3.1/5.0 km/hr.)	1.6/2.9 mph (2.6/4.7 km/hr.)	1.7/2.9 mph (2.7/4.7 km/hr.)
Conv. – 17.6 in. (447 mm)	Minimal – 0.6 in. (16 mm)	Minimal – 3.6 in. (91 mm)	—	—	—
9722 lb. (4410 kg)	10,553 lb. (4787 kg)	11,195 lb. (5078 kg)	—	—	—
11 ft. 6 in. (3505 mm)	11 ft. 10 in. (3600 mm)	12 ft. 11 in. (3923 mm)	—	—	—
18 ft. 3 in. (5551 mm)	19 ft. 7 in. (5964 mm)	20 ft. 9 in. (6333 mm)	—	—	—
12 ft. 10 in. (3907 mm)	12 ft. 6 in. (3819 mm)	13 ft. 7 in. (4132 mm)	—	—	—
Conv. – 17.6 in. (447 mm)	Minimal – 0.6 in. (16 mm)	—	Conv. – 13.4 in. (340 mm)	—	—
9976 lb. (4525 kg)	10,807 lb. (4902 kg)	—	12,335 lb. (5595 kg)	—	—
12 ft. 6 in. (3814 mm)	12 ft. 10 in. (3909 mm)	—	14 ft. 7 in. (4443 mm)	—	—
19 ft. 1 in. (5824 mm)	20 ft. 6 in. (6241 mm)	—	21 ft. 7 in. (6566 mm)	—	—
13 ft. 3 in. (4050 mm)	13 ft. (3955 mm)	—	14 ft. 6 in. (4409 mm)	—	—
Tier 4	Tier 4	Tier 4	Tier 4	Tier 4	Tier 4
42.6 hp (31.8 kW)	42.6 hp (31.8 kW)	49.7 hp (37.0 kW)	49.7 hp (37.0 kW)	59.4 hp (44.3 kW)	65.9 hp (49.2 kW)
Turbo Diesel	Turbo Diesel	Turbo Diesel	Turbo Diesel	Diesel	Turbo Diesel
21.0 gal. (79.0 L)	21.0 gal. (79.0 L)	21.0 gal. (79.0 L)	21.0 gal. (79.0 L)	20.6 gal. (78.0 L)	30.6 gal. (116.0 L)
Std	Std	Std	Std	—	—
Std	Std	Std	Std	—	Std
Yes	Yes	Yes	Yes	Yes	Yes
Yes	Yes	Yes	Yes	Yes	Yes
Opt	Opt	Opt	Opt	—	—
Std	Std	Std	Std	Std	Std
Std	Std	Std	Std	Std	Std
Std	Std	Std	Std	Std	Std
Std	Std	Std	Std	Std	Std
—	—	—	—	—	—
Opt	Opt	Opt	Opt	Std	Std
Std	Std	Std	Std	Std	Std
Opt	Opt	Opt	Opt	Std	Std
Std	Std	Std	Std	Std	Std
—	—	—	—	—	—
Std	Std	Std	Std	—	Std
—	—	—	—	—	Opt
Std	Std	Std	Std	Std	Std
Opt	Opt	Opt	Opt	Std	Opt
Opt	Opt	Opt	Opt	Opt	Std
—	—	—	—	—	—
Opt	Opt	Opt	Opt	Opt	Opt
Opt	Opt	Opt	—	—	Opt
—	—	—	—	—	Opt
Std	Std	Std	Std	Std	Opt
Opt	Opt	Opt	Opt	—	Opt
Std	Std	Std	Std	Std	Std
20.0 gpm (75.7 L/min.)	20.0 gpm (75.7 L/min.)	20.0 gpm (75.7 L/min.)	20.0 gpm (75.7 L/min.)	22.5 gpm (85.0 L/min.)	25.1 gpm (95.0 L/min.)
3045 psi (210 bar)	3045 psi (210 bar)	3045 psi (210 bar)	3045 psi (210 bar)	3045 psi (210 bar)	3045 psi (210 bar)
Opt	Opt	Opt	Opt	Opt	Opt
Std	Std	Std	Std	Std	Std
Opt	Opt	Opt	Opt	Opt	Opt
Std	Std	Std	Std	Std	Std



# THE LEADER IN VERSATILITY AND MANEUVERABILITY



Skid-Steer Loaders



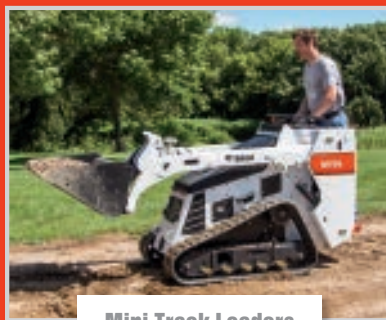
Compact Track Loaders



All-Wheel Steer Loaders



Compact Excavators



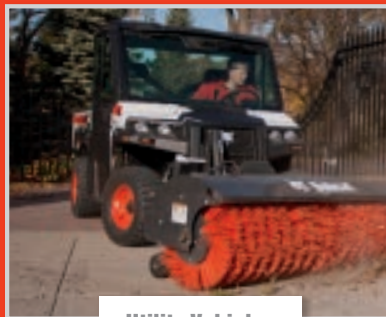
Mini Track Loaders



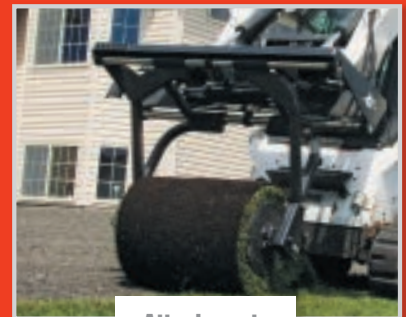
VersaHANDLER Telescopic Tool Carriers



Toolcat™ Utility Work Machines



Utility Vehicles



Attachments



## GET GEAR!

Find cool Bobcat gear and accessories by visiting  
your local Bobcat dealer or **[BobcatStore.com](http://BobcatStore.com)**

 **Bobcat**  
*One Tough Animal.*



### PIONEERING MANEUVERABILITY

Bobcat introduced its first compact loader in 1958, and two years later, the world's first skid-steer loader. This created an entire industry of machines that put the power of large equipment in a compact size with unmatched maneuverability.

### OFFERING MORE VERSATILITY

In 1970, Bobcat invented the first quick-change attachment system for skid-steer loaders, known as the Bob-Tach® mounting system. Today we offer more attachments than anyone in the world, empowering customers to transform all of our machines into multi-tasking attachment carriers and reach higher levels of production.

### ONE TOUGH ANIMAL®

All over the world, Bobcat equipment is known for being durable and dependable. By lasting longer and minimizing downtime, we help our customers become as successful as possible.

### HELP WHEN YOU NEED IT

With over 50 years of experience and more than 550 locations, we offer the best dealer network in the country for compact equipment. Our dealers offer a quality sales force, dependable parts departments and qualified service technicians, all leading to a quality customer experience.



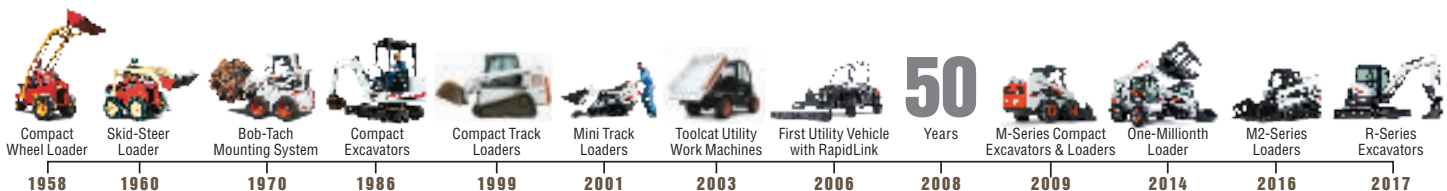
### A CONSTANT INNOVATOR

In the late 1950s, a turkey farmer needed help – so in 1958, we introduced what was to become the world's first skid-steer loader. We created an industry by listening to the needs of the customer. This focus is the same today. In 2000, a superintendent needed help – so we built the world's first Toolcat utility work machine. We continue to be a global leader in innovation by listening to our customers.

### LEADER BY DESIGN

Listening to the customer and a pioneering spirit are why Bobcat continues to lead the evolution of compact equipment ...

- 1960** – Invented the **FIRST** true skid-steer loader.
- 1970** – Invented the **FIRST** attachment mounting system for skid-steer loaders.
- 1977** – Built the **FIRST** skid-steer loader with no chain adjustments required. Still a Bobcat exclusive.
- 1981** – Introduced the **FIRST** secondary restraint seat bar.
- 1983** – The **FIRST** skid-steer loader with a transversely mounted engine. Still a Bobcat exclusive.
- 1990** – Introduced the **FIRST** compact excavator manufactured in the U.S.
- 1999** – Introduced the **FIRST** compact track loader with a solid-mounted undercarriage manufactured in the U.S.
- 2001** – Invented the **FIRST** loader with all-wheel steer and skid-steer capabilities. Still a Bobcat exclusive.
- 2003** – Revolutionized the way the world works with the invention of the Toolcat line, the world's **FIRST** utility work machines – a cross between a pickup, attachment carrier and utility vehicle. Still a Bobcat exclusive.
- 2006** – Introduced the **FIRST** utility vehicle with RapidLink™ attachment mounting system.
- 2008** – Roller Suspension™, the **FIRST** all-steel suspension system, was introduced.
- 2009** – Launched M-Series compact excavators and loaders.
- 2011** – The M-Series loader models S850 and T870 became the largest and most powerful in our lineup.
- 2012** – Bobcat introduced two new sizes of extendable-arm excavator options that are both attachment and clamp-ready.
- 2013** – The M-Series 500 frame-size loaders replaced the popular S185 and T190 (among many others). This loader size is the most popular in the world and has been for two decades.
- 2014** – Bobcat launched the 400 frame-size loaders, completing the M-Series line; manufactured its one-millionth loader; introduced its own Tier 4, non-DPF engines; and opened the Bobcat Acceleration Center, a dedicated innovation, testing and technology facility.
- Today** – There are more Bobcat skid-steer loaders at work around the world than all other brands combined.
- Today** – Bobcat manufactures more attachments than anyone in the world.
- Today** – Bobcat is the only company that offers operator training kits for compact equipment.
- Today** – Bobcat offers a full range of extendable-arm options, three sizes fitting five different excavator models.
- Today** – Compact track loaders are rapidly becoming the product of choice in many market segments.
- Today** – Launch of the M2-Series loaders.
- Today** – Bobcat introduces the first R-Series excavators.



# BOBCAT TIMELINE



# WHICH CLAMP HOLDS MORE POTENTIAL?

The Pro Clamp system from Bobcat grabs large, odd-shaped material and efficiently performs grades – often on the same job – with pin-on, adjustable tools. Get traditional clamp functionality with the standard tool, or widen your bite for bigger material like pipes, boulders or large logs. The grading tool quickly grades the bottom of your trench and retains the ability to dig with your bucket's cutting teeth. When reversed, the tool quickly removes spoil piles during cleanup, reducing the need for manual shoveling. See the Pro Clamp system for yourself at [Bobcat.com/MXProClamp](http://Bobcat.com/MXProClamp)



**Bobcat is a Doosan company.** Doosan is a global leader in construction equipment, power and water solutions, engines, and engineering, proudly serving customers and communities for more than a century. Bobcat™, the Bobcat logo and the colors of the Bobcat machine are registered trademarks of Bobcat Company in the United States and various other countries.

©2017 Bobcat Company. All rights reserved.



Printed on 10% recycled paper

B-1857 (10/17)



**Bobcat®**

***One Tough Animal.***

**Bobcat Company**  
P.O. Box 6000 • West Fargo, ND 58078  
[bobcat.com](http://bobcat.com)  
Printed in U.S.A.

Kn-12M-1017-56427-6

# Bobcat

## E63

# COMPACT EXCAVATOR

Effective June 1, 2013

These bid specifications are to be used as guidelines when assisting purchasing agents and governmental specification writers in writing specs for excavators.

It is not the intent of these specifications to cover all details of design or construction. The unit shall be fully equipped to perform the work intended and shall be a new, current production model.

For individual assistance in preparing detailed specifications, contact the Product Management Department in the West Fargo, ND office at 701-241-8700.

***\*Specification(s) are based on engineering calculations and are not actual measurements. Specification(s) are provided for comparison purposes only and are subject to change without notice. Specification(s) for your individual Bobcat equipment will vary based on normal variations in design, manufacturing, operating conditions, and other factors.***

**For the most up-to-date Bid Specs go to BobcatNET >>Excavators>>E63>>Bid Specs**

Compact Excavator Bid Specifications (6-7 Ton)

# COMPACT EXCAVATOR BID SPECIFICATIONS (6-7 Ton)

## OPERATING WEIGHTS & GROUND PRESSURES

Operating Weight (Includes Standard Equipment and 24 in. Bucket)

- With Cab, Heat/Air Conditioning ..... 13779 lbs. (6250 kg)

- Add for Steel Tracks ..... + 265 lbs. (120 kg)

Ground Pressure with 15.7" (400 mm) rubber tracks: ..... 5.1 psi (35.2 kPa)

Ground Pressure with 15.7" (400 mm) steel tracks ..... 5.1 psi (35.2 kPa)

## WORKING RANGE & DIGGING FORCES

Minimum Arm Length (pin to pin) ..... 74.8 in. (1900 mm)

Maximum Dig Depth ..... 162.0 in. (4115 mm)

Maximum Depth of Vertical Wall which can be excavated ..... 135.2 in. (3435 mm)

Maximum Reach at Ground Level ..... 245 in. (6230 mm)

Maximum Radius of Working Equipment ..... 250 in. (6355 mm)

Maximum Dump Height ..... 168 in. (4260 mm)

Maximum Bucket Tooth Height ..... 236.4 in. (6005 mm)

Maximum Working Equipment Radius with Boom at Maximum Height ..... 97.4 in. (2475 mm)

Minimum Bucket Pivot Angle ..... 185°

Maximum Blade Depth ..... 17.3 in. (440 mm)

Swing Clearance, Rear of Upper-structure ..... 50.6 in. (1285 mm)

Tail Swing Overhang ..... 11.6 in. (295 mm)

Slew Speed ..... 9.4 RPM

Boom Swing (Left) ..... 70°

Boom Swing (Right) ..... 50°

Arm Digging Force ..... 5767 lbf. (25654 N.)

Bucket Digging Force ..... 9731 lbf. (43287 N.)

## DIMENSIONS

Cab Height ..... 100.4 in. (2550 mm)

Overall Length in Transport Position ..... 224 in. (5685 mm)

Minimum Radius in Transport Position ..... 166.5 in. (4230 mm)

Clearance, Upper-structure to Groundline ..... 25 in. (635 mm)

Groundline to Top of Engine Cover ..... 63.8 in. (1620 mm)

Length of Track on Ground ..... 78.3 in. (1990 mm)

Overall Length of Track Assembly ..... 98.4 in. (2500 mm)

Machine Centerline to Blade – Standard Blade ..... 73.6 in. (1870 mm)

Blade Height ..... 16.1 in. (410mm)

Blade Width ..... 78 in. (1980 mm)

## HYDRAULIC SYSTEM

Number of Pumps.....One  
Pump Type ..... Variable Displacement, Load Sensing, Torque Limiting Piston Pump  
Pump Capacity ..... 34.9 GPM (132 L/min)  
System Relief Pressure ..... 3625 PSI (250 bar)  
Auxiliary Relief, Primary..... 3045 PSI (210 bar)  
Auxiliary Flow, Primary ..... 22.5 GPM (85 L/min)  
Auxiliary Relief, Secondary..... 3045 PSI (210 bar)  
Auxiliary Flow, Secondary ..... 9.2 GPM (35 L/min)  
Control Valve ..... Closed Center Valve, Individually Compensated  
Slew Motor..... Axial Piston Motor with Planetary Reduction  
Oil Cooler..... Standard Equipment

### Hydraulic Function Times

Bucket..... Curl	3.1 Seconds	Dump	2.1 Seconds
Arm (cushion in/out)..... Retract	2.8 Seconds	Extend	2.6 Seconds
Boom ..... Raise	2.2 Seconds	Lower	2.1 Seconds
Boom Swing ..... Left	6.7 Seconds	Right	8.7 Seconds
Blade ..... Raise	2.1 Seconds	Lower	2.9 Seconds

## DRIVE SYSTEM

Final Drive ..... Each track is independently driven by a hydrostatic axial piston motor  
Type of Reduction.....Two stage planetary gear reduction 53.7 : 1  
Maximum Drawbar Pull..... 12346 lbf.(54918 N)  
Maximum Gradability (tractive effort) ..... 30°  
Travel Speed  
- Low ..... 1.6 mph (2.6 km/hr)  
- High ..... 2.9 mph (4.7 km/hr)

## ENGINE/ELECTRICAL

Make/Model/Tier .....Yanmar / 4TNV98C / Tier 4 Final  
Fuel/Cooling ..... Diesel/Liquid  
Horsepower (Gross) ..... 59.4 hp (44.3 kW)  
Rated Engine Speed.....2100 RPM  
Torque @ 1365 RPM (Gross)..... 178 ft.-lbs. (241 Nm)  
Number of Cylinders .....4  
Displacement..... 203 in.<sup>3</sup> (3.3 L)  
Lubrication ..... Forced  
Filter.....Cartridge Type – Full Flow  
Air Cleaner..... Dry Replaceable Paper Cartridge w/ Safety Element  
Alternator ..... 12 volt, 80 amps  
Battery .....12 volt, 900 cold cranking amps @ 0°F (-18°C)  
Starter..... 12 volt, Gear Reduction Type; 4.0 HP (3.0 kW)

## CONTROLS

Vehicle Steering.....	Two hand or foot levers control speed and direction
High/Low (travel speed).....	Controlled by push button on blade lever
Excavating Functions.....	Two hydraulic joysticks control boom, arm, bucket & house slew; Boom swing controlled by fingertip switch on left joystick; The blade is controlled by a separate lever
Engine Speed Control.....	Rotary Dial with Auto-Idle
Auxiliary Function .....	Controlled by switches on right-hand joystick – variable flow with detent
Service Brake (Travel) .....	Hydraulic lock on motor
Parking Brake (Travel).....	Hydraulic lock on motor
Service Brake (Slew) .....	Hydraulic lock on motor
Holding Brake (Slew) .....	Spring applied multi-disc brake

## CAPACITIES

Fuel Tank.....	20.6 gal. (78 L)
Engine Cooling System .....	10.6 qts. (10.0 L)
Engine Oil & Filter.....	10.8 qts. (10.2 L)
Hydraulic System.....	29.3 gal. (111 L)
Hydraulic Reservoir .....	17.2 gal. (65 L)

## UNDERCARRIAGE

Undercarriage .....	Crawler-Type Tractor Design
Track Rollers .....	Sealed, with Reinforced Box-Section Track Roller Frame
Track Adjusters.....	Grease-Type with Shock Absorbing Recoil Springs
Track Type / Width (Standard).....	Half-Pitch Rubber / 15.7" (400 mm)
Track Type / Width (Optional).....	Steel Shoe / 15.7" (400 mm)
No. of Track Rollers .....	5 each side

## INSTRUMENTATION

Machine shall be equipped with following instrumentation:

- Multi language color screen with Hour Meter & Day/Date/Time
- Auto-Idle Indicator
- Auxiliary Mode Indicator
- Engine Oil Pressure Light with Audible Alarm
- Engine Speed
- Engine Throttle Position
- Engine Coolant Temperature Gauge
- Fuel Gauge
- Hydraulic Charge Pressure Light with audible
- Pre-Heat Glow Plug Indicator with Auto Countdown
- Service Reminder Clock
- Seat Belt Reminder Indicator (with time out)
- Two Speed (High Range) Indicator

### **STANDARD FEATURES SHALL INCLUDE:**

- Attachment Quick Change Mounting System
- Auto-Idle
- Auto-Shift Drive
- Auxiliary Hydraulics with Arm Mounted Flush Face Quick Couplers
- Cab with Heat & Air Conditioning, Radio Ready – (ROPS & TOPS certified)
- Control Console Locks – all Machine Functions
- Control Pattern Selector Valve (ISO/STD)
- Cup Holder
- Dozer Blade with Float
- Engine Condition Monitor with Return to Idle
- Fingertip Auxiliary Hydraulic Control – Joystick Mounted
- Fingertip Boom Swing Control – Joystick Mounted
- Horn
- Hydraulic Joystick Controls
- Mirrors, Left and Right Side
- Password Protection Theft Deterrent System
- Rubber Tracks
- Selectable Flow Auxiliary Hydraulic Rates
- Suspension Seat, Cloth - High Back, with Retractable Seat Belt
- Tier 4 Final Compliant Engine & Exhaust System
- Travel Motion Alarm
- Two-Speed Travel
- Warranty: 12 Months, Unlimited Hours
- Work Lights – Boom Mounted (2) & Cab Mounted (1)

### **AVAILABLE OPTIONS/ACCESSORIES:**

- Secondary auxiliary hydraulic circuit shall be available as optional equipment.
- Steel tracks shall be available as optional equipment.
- Top guard and front guard kits shall be available.
- 3" Seat belt kit shall be available as optional equipment.

### **ATTACHMENTS**

#### **Attachment Requirements:**

- All attachments must be mounted on a quick-change mechanism.
- Attachment quick-change mechanism shall not compromise arm force or bucket force.
- Auxiliary hydraulic circuit shall include a Direct-to-Tank selector valve.
- Excavator arm shall be Clamp ready & control valve shall have auxiliary port relief installed.

#### **Attachments Available:**

- |                                  |                   |
|----------------------------------|-------------------|
| - Auger                          | - Packer Wheel    |
| - Buckets: Grading and Trenching | - Plate Compactor |
| - Grading Blade                  | - Power Tilt®     |
| - Grapple, 3-Tine                | - Ripper          |
| - Hydra-Tilt                     | - Hydraulic Clamp |
| - Hydraulic Breaker              |                   |

## **SAFETY**

- Cab shall meet Rollover Protective Structure (ROPS) in accordance with ISO 12117-2 and Tip Over Protective Structure (TOPS) in accordance with ISO 12117.
- Retractable seat belt shall be provided as standard equipment.
- Additional operator protection shall be provided by deactivating ALL excavator functions when the operator console is in the upright position.
- An automatic spring applied multi-disc brake shall be provided to lock the upper structure to the undercarriage for transporting purposes.
- Grab handles to assist the operator in entering and exiting the excavator will be provided as standard equipment.
- Front working lights for indoor use and low light operation will be standard.
- A weather resistant operator handbook written in English will be attached to inside of cab, providing operational instructions and warning by decals with pictorials and international symbols plus some messages in four basic languages: English, French, German and Spanish.
- Lift Capacity Chart shall be affixed to the machine, with the operators line of sight.

## **SERVICEABILITY**

- Access to the following items shall be gained by opening the side access hood:
  - Air cleaner with restriction indicator
  - Battery
  - Cooling system (engine oil and hydraulic oil coolers) for cleaning
  - Coolant recovery bottle
  - Engine oil and fuel filters
  - Engine oil level
  - Sight gauge for hydraulic oil level
- Fuel fill shall have lock for vandal proofing.
- Easy access to all grease points.
- Central grease point for slew bearing, slew pinion, and offset cylinder.
- Cab shall tilt forward to gain access to control valve and slew motor.

## **TRAINING RESOURCES**

- A comprehensive Excavator Service Safety Training Kit shall be available.
- A comprehensive Excavator Operator Training Kit shall be available.

Bobcat Enterprises, Hilliard, OH  
3666 LACON ROAD  
HILLIARD OH 43026  
Phone: (614) 876-1116  
Fax: (614) 876-3118

Quotation Number: 26882D027368

Date: 2018-09-05 11:41:01

Ship to	Bobcat Specialist
City Of Columbus Fleet Management Division Attn: John King 4211 Groves Road Columbus, OH 43232 Phone: (614) 645-6104	Tim Cannon Phone: 614-876-1116 Fax: 614-876-3118 Cellular: 614-206-6360 E Mail: tcannon@bobcatent.com

Description	Part No	Qty	Price Ea.	Total
E63 T4 Bobcat Compact Excavator	M5563	1	\$58,706.90	\$58,706.90
59.3 HP Tier 4				
<ul style="list-style-type: none"><li>• Auto-Idle</li><li>• Auto-Shift, Two Speed Travel</li><li>• Auxiliary Hydraulics - w/ Quick Couplers &amp; Selectable Flow Rates</li><li>• Boom Load Hold Valve</li><li>• Boom Swing</li><li>• Cab, Enclosed with HVAC - ROPS/TOPS</li><li>• Includes: Cup Holder, Retractable Seat Belt, Deluxe Cloth Suspension Seat with High Back</li><li>• Control Console Locks</li><li>• Control Pattern Selector Valve (ISO/STD)</li><li>• Direct-to-tank Valve</li><li>• Dozer Blade - w/ Float</li></ul>				<ul style="list-style-type: none"><li>• Engine Monitor with Return to Idle</li><li>• Fingertip Auxiliary Hydraulics &amp; Boom Swing</li><li>• Horn</li><li>• Hydraulic Joystick Controls</li><li>• Mirrors - Left and Right Side</li><li>• Password Protection System</li><li>• Rubber Tracks</li><li>• Tier 4 Compliant - DPF/DOC</li><li>• Travel Motion Alarm</li><li>• Work Lights</li><li>• X-Change™ Attachment Mounting System</li></ul>
12" MX4 XCHG TEETH	7321974	1	\$706.80	\$706.80
18" MX4 XCHG TEETH	7322082	1	\$820.80	\$820.80
30" MX5 XCHG SMOOTH	7333378	1	\$1,119.48	\$1,119.48
HB1180 Hydraulic Breaker with Nail Point	7115923	1	\$7,854.60	\$7,854.60
--- X-Change Mounting Cap - HB1180/HB1380	7117325	1	\$421.80	\$421.80
--- Hose Kit - HB1180,HB1380,HB2380-E80 & E85	7176608	1	\$209.00	\$209.00
PCF64 Plate Compactor (PCF64)	7210256	1	\$4,533.12	\$4,533.12
--- PC Hose Kit, E60,E63,E80,E85 (BKHSKT)	7217836	1	\$214.32	\$214.32
Description	Part No	Qty	Price Ea.	Total
Mounting Cap for Plate Compactor	7113657	1	\$361.00	\$361.00

Total of Items Quoted	<b>\$74,947.82</b>
Dealer P.D.I.	<b>\$0.00</b>
Freight Charges	<b>\$0.00</b>
Dealer Assembly Charges	<b>\$0.00</b>
Quote Total - US dollars	<b>\$74,947.82</b>

**Notes:**

Pricing per state contract.

All prices subject to change without prior notice or obligation. This price quote supersedes all preceding price quotes.

**Customer Acceptance:**

Purchase Order: \_\_\_\_\_

**Authorized Signature:**

**Print:**\_\_\_\_\_ **Sign:**\_\_\_\_\_ **Date:** \_\_\_\_\_