

LEGEND

PROPOSED CITY OF COLUMBUS CORP. LINE

AREA TO BE ANNEXED

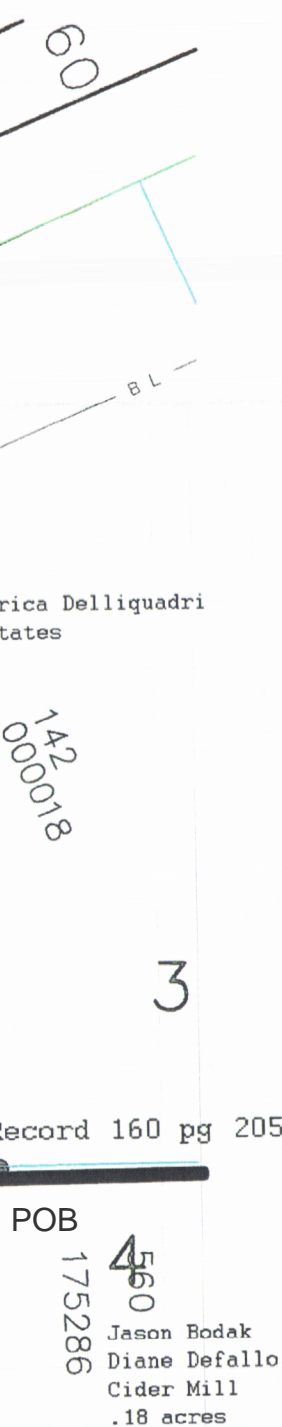
This exhibit was prepared from recorded information from the Franklin County Engineer, Recorder, Auditor and a property survey conducted on 9/27/2007 and is not intended for the transfer of real property.

ANNEXATION
PLAT & DESCRIPTION
ACCEPTABLE
CORNELL R. ROBERTSON, P.E., P.S.
FRANKLIN COUNTY ENGINEER
By CR Date 11/20/18

RECEIVED

NOV 28 2018

Franklin County Engineer
Cornell R. Robertson, P.E., P.S.



GRAPHIC SCALE

$$1'' = 40'$$

drawing prepared by:
Lauren Halton
Date:

4143 Ongaro Drive (614) 634-0178
Columbus, Ohio 43204 lauren.halton@kingthompson.com