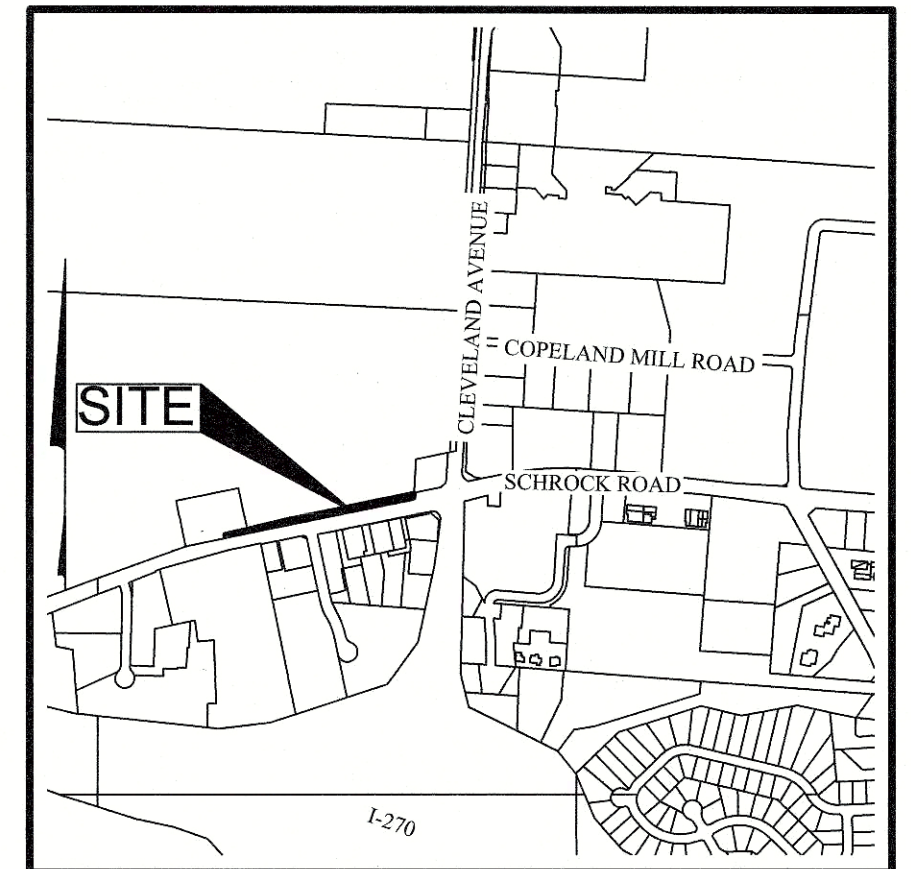
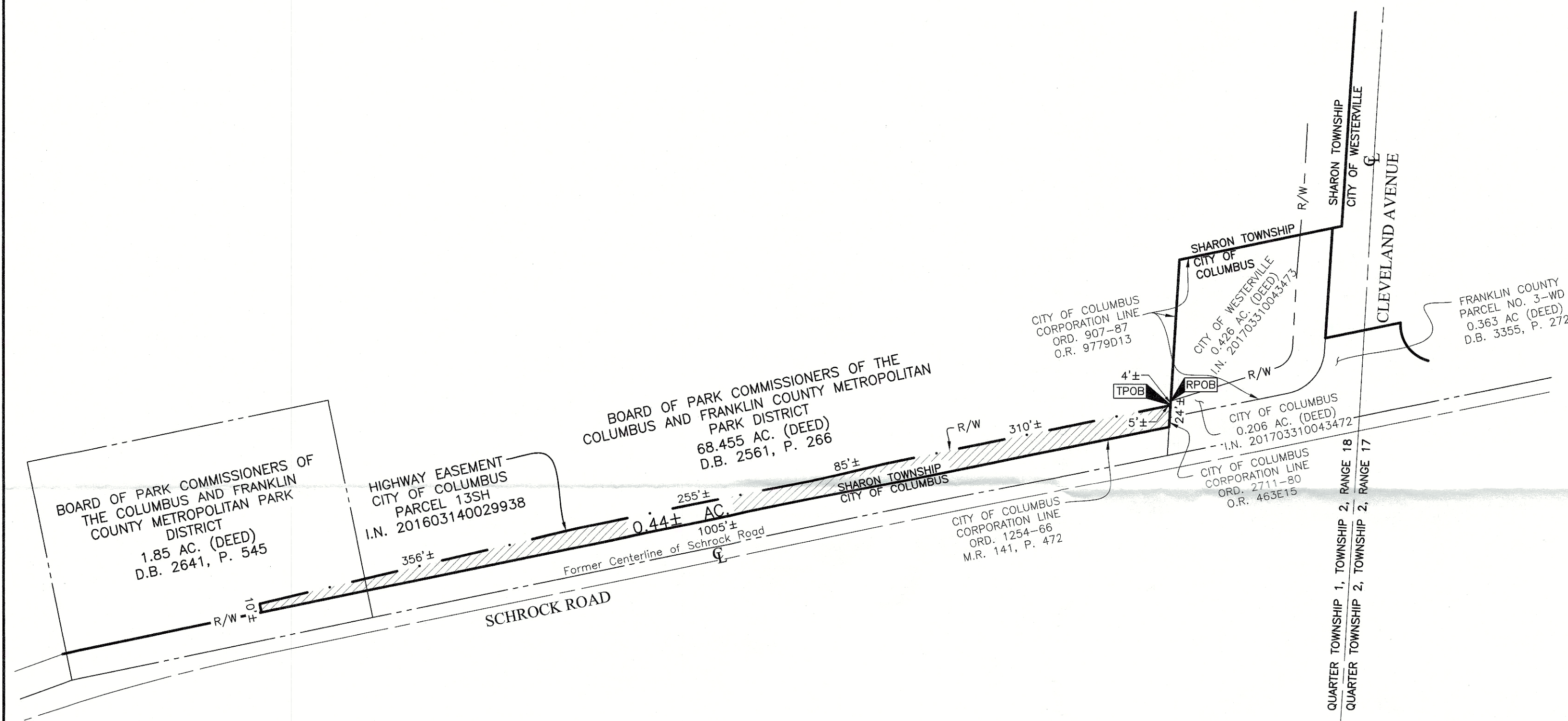


PROPOSED ANNEXATION OF 0.44± ACRES TO: THE CITY OF COLUMBUS FROM: SHARON TOWNSHIP

QUARTER TOWNSHIP 1, TOWNSHIP 2, RANGE 18
UNITED STATES MILITARY LANDS
TOWNSHIP OF SHARON, COUNTY OF FRANKLIN, STATE OF OHIO

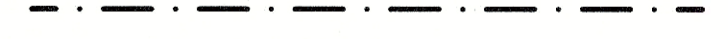


LOCATION MAP AND BACKGROUND DRAWING
NOT TO SCALE

AREA TO BE ANNEXED



PROPOSED CORPORATION LINE



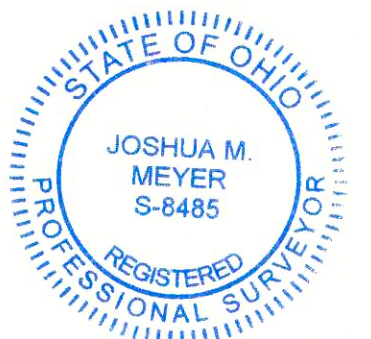
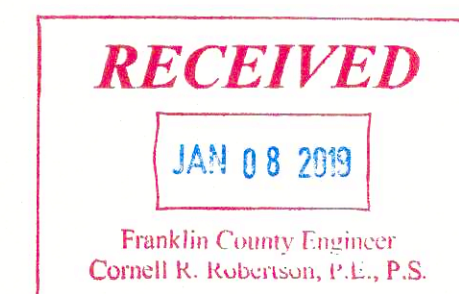
EXISTING CORPORATION LINE



Contiguity Note:
Total perimeter of annexation area is 2050 feet, of which 1028 feet is contiguous with the City of Columbus by Ordinance Number 1254-66 and 907-87, giving 50.1% perimeter contiguity.

This exhibit was prepared from record information from the Franklin County Recorder's Office, and is not intended for transfer.

ANNEXATION
PLAT & DESCRIPTION
ACCEPTABLE
CORNELL R. ROBERTSON, P.E., P.S.
FRANKLIN COUNTY ENGINEER
By Jan Date 1/8/19



By Jan
Joshua M. Meyer
Professional Surveyor No. 8485

Date 12-14-2018

EMH&T Evans, Mechwart, Hambleton & Tilton, Inc. Engineers • Surveyors • Planners • Scientists 5500 New Albany Road, Columbus, OH 43054 Phone: 614.775.4500 Toll Free: 888.775.3648 emht.com		Date: December 14, 2018
Scale: 1" = 100'		Job No: 2018-1012
Sheet: 1 of 1		
REVISIONS		
MARK	DATE	DESCRIPTION

